



Equipped with AEM® Dryflow™ Filter
No Oil Required!

INSTALLATION INSTRUCTIONS

PART NUMBER:

21-484B (Blue Finish)

21-484C (Gun Metal Grey Finish)

21-484P (Vacuum Metalized Chrome-VMC)

21-484R (Red Finish)

2003-2004 MAZDA 6 L4-2.3L C.A.R.B. E.O. # D-670-15

**AEM® bypass valves are not compatible with this intake system (part number 21-484)
DO NOT attempt to install an AEM® bypass valve on this intake system!**

**Intake systems for vehicles listed are 50
state legal. See AEMIntakes.com for CARB
status on each part for a specific vehicle.**

PARTS LIST

Part Number	Qty.	Part Number
Element Parts Kit 2.75 X 5" Dry Ele.	1	21-202DK
Inlet Pipe	1	2-409
Hose, Silicone 2.75x3" Blk.	1	5-275
Mount, Rubber 1" X 8mm	1	1228560
Zip Tie, 6 Long	1	1-113
Vacuum Cap, 1/4	1	8-131
Bracket	1	7-7222
Bolt, Hex M6-1 X 65mm	1	1-2095
Bolt, Socket 8-32 X 5/16 SS	2	1-2023
Washer, 8mm Soft Mount	1	559960
Washer, 6mm Soft Mount	1	08160
Nut, M8 Hex Serrated	1	444.460.08
1/2" Bnd. Hose Clamp, 2.31-3.25"	2	9444
Hose Clamp, 3/4"	1	4093-5
1/2" Bnd. Hose Clamp, 2.56"-3.50"	1	9448

Read and understand these instructions **BEFORE** attempting to install this product. Failure to follow installation instructions and not using the provided hardware may damage the intake tube, throttle body and engine.

The AEM[®] intake system is a performance product that can be used safely during mild weather conditions. During harsh and inclement weather conditions, you must return your vehicle to stock OEM air box and intake tract configuration. Failure to follow these instructions will void your warranty.

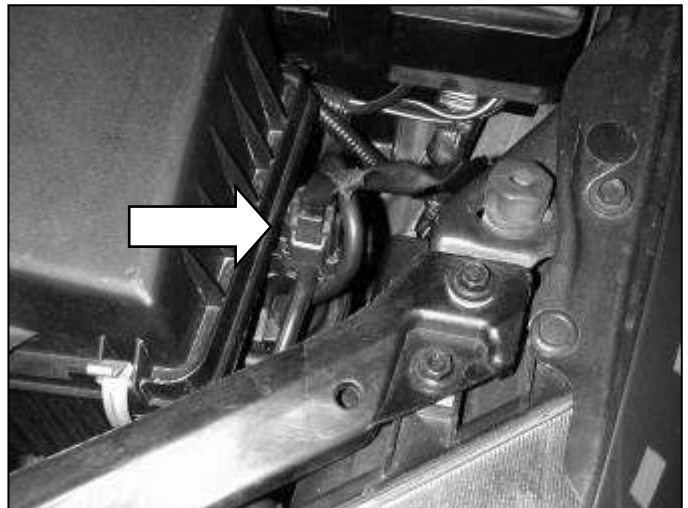
1. Preparing Vehicle

- a. Make sure vehicle is parked on level surface.
- b. Set parking brake.
- c. If engine has run in the past two hours, let it cool down.
- d. Disconnect negative battery terminal.
- e. Remove the plastic engine cover.
- f. Raise the front of the vehicle with a jack. Refer to your owner's manual for proper jack and jack stand placement to properly support vehicle. Support your vehicle using properly rated jack stands before wheel removal or while working under the vehicle.
NEVER WORK UNDER A VEHICLE WITHOUT USING JACK STANDS.
- i. Remove front left wheel.
- g. Do not discard stock components after removal of the factory system.

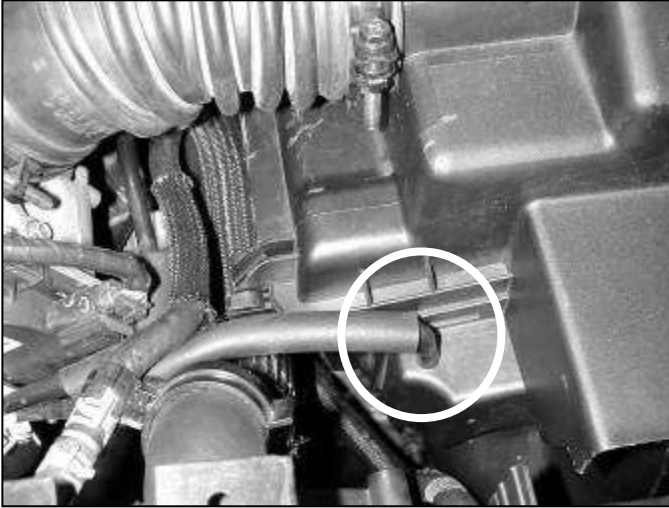
2. Removal of stock system



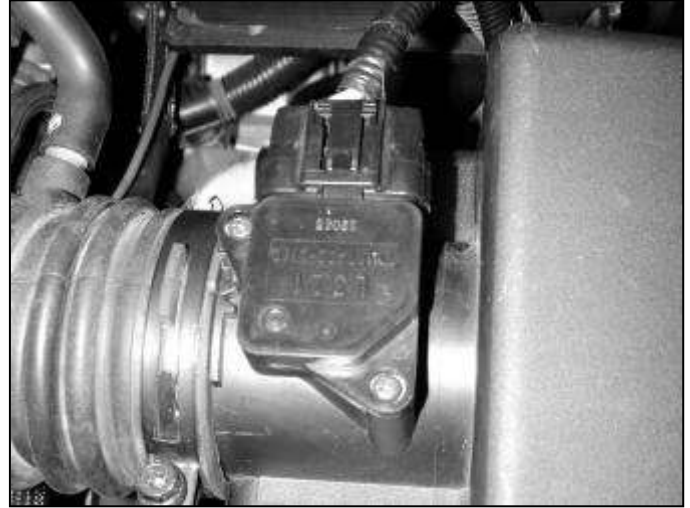
a. Stock air box system installed.



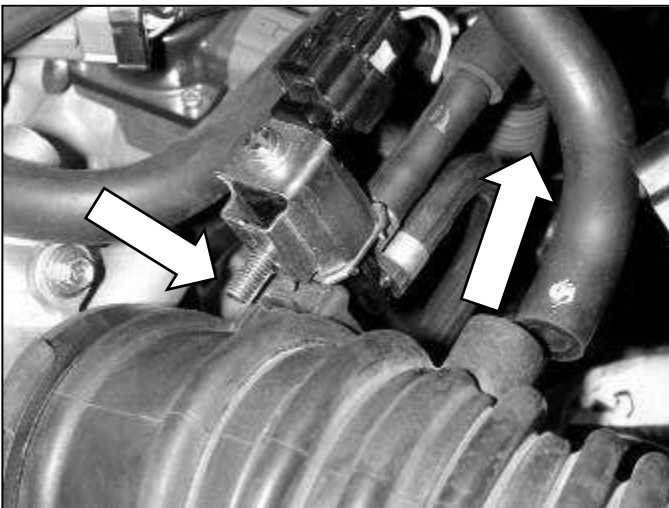
b. Release the green plug on the vacuum solenoid located next to the air box.



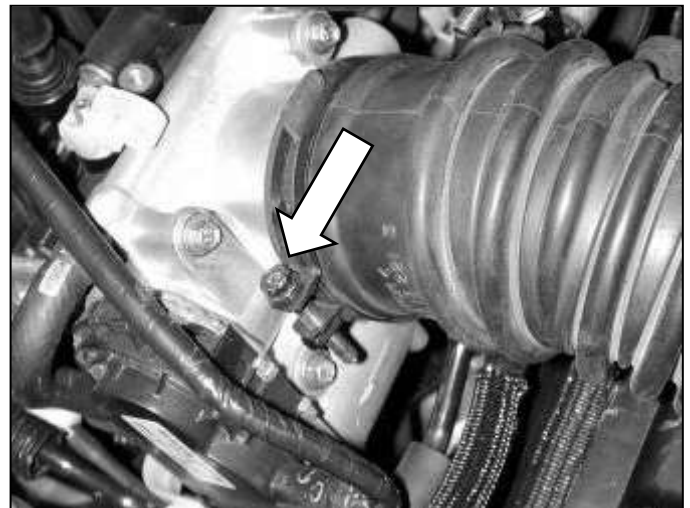
c. Pull the vacuum hose off of the air box nipple.



d. Unplug the mass air flow sensor.



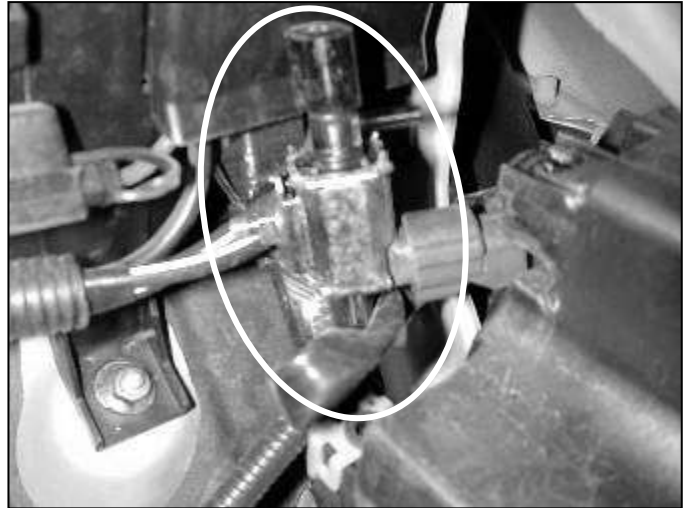
e. Pull the crank case breather hose off of the inlet tubing. Remove the nut that secures the vacuum solenoid to the metal bracket and save it for later use.



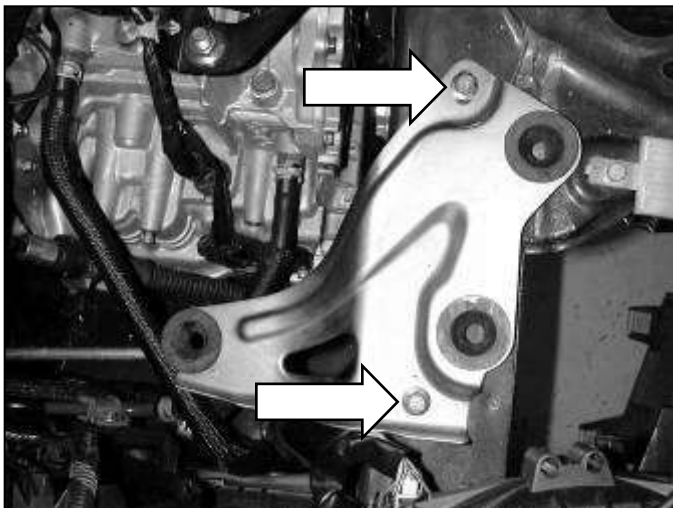
f. Loosen the hose clamp at the throttle body. Pull the inlet hose off of the throttle body.



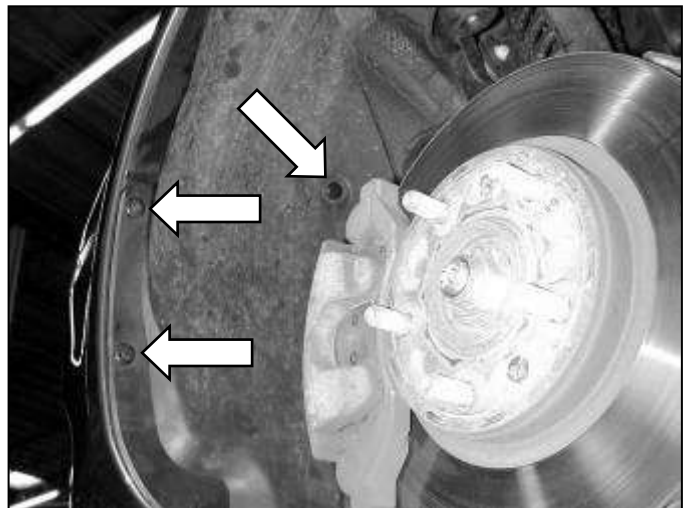
g. Pull the air box up and out of the engine bay.



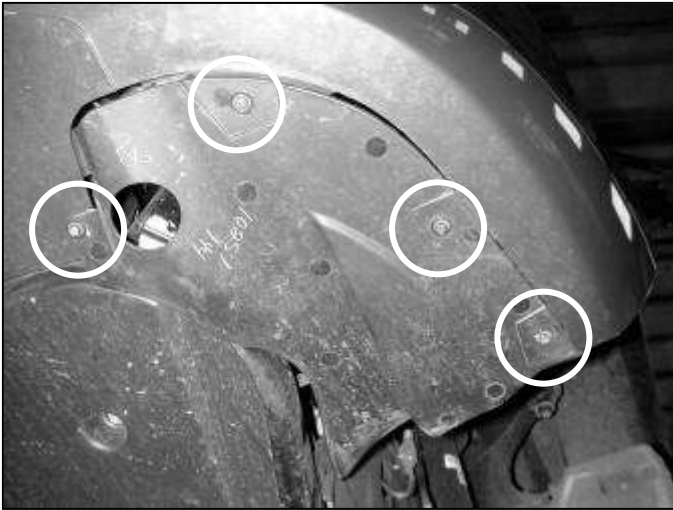
h. Remove the vacuum solenoid from the air box. Using the supplied zip tie secure it to the side for later use. It will be re-installed on the vehicle.



i. Remove the air box support plate.



j. Release the three plastic rivets securing the fender liner.



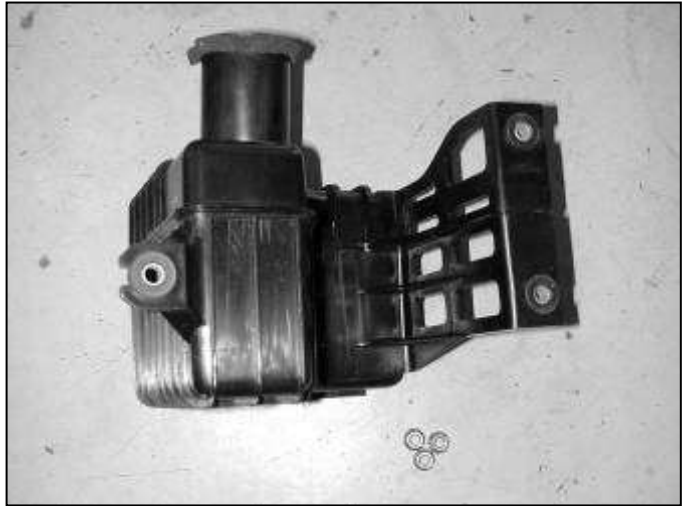
k. Remove the four screws on the bottom of the fender liner.



l. Partially remove the fender liner as shown.



m. Remove the three nuts that secure the lower air box to the vehicle.



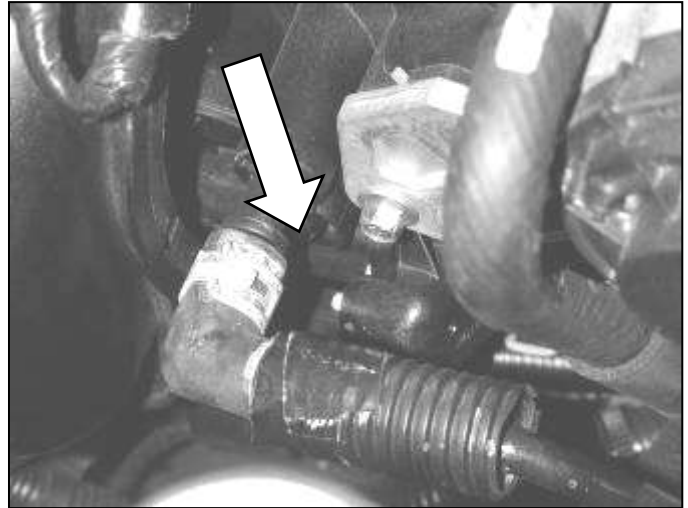
n. Remove the lower air box from the vehicle.

3. Installation of AEM® Intake System

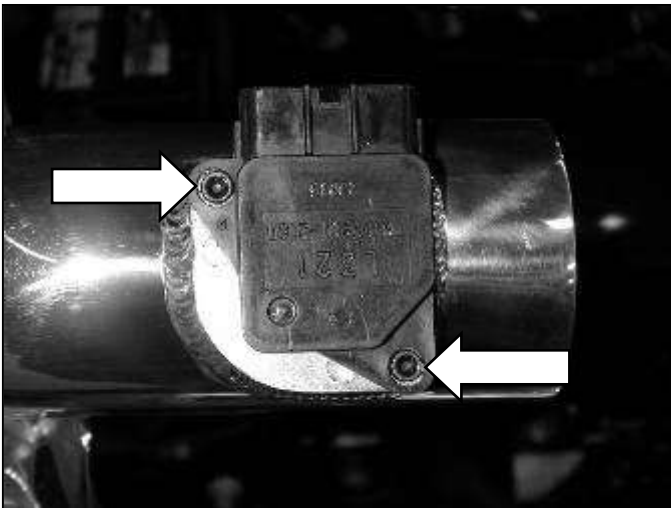
- a. When installing the intake system, do not completely tighten the hose clamps or mounting hardware until instructed to do so.



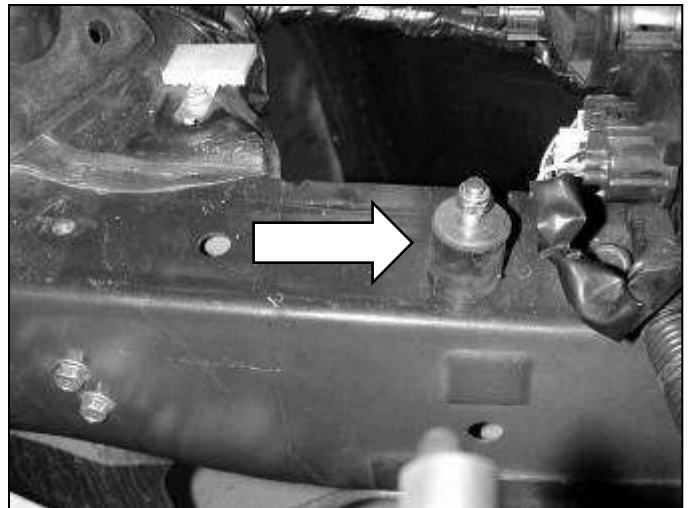
b. Pull vacuum hose off nipple on the intake manifold.



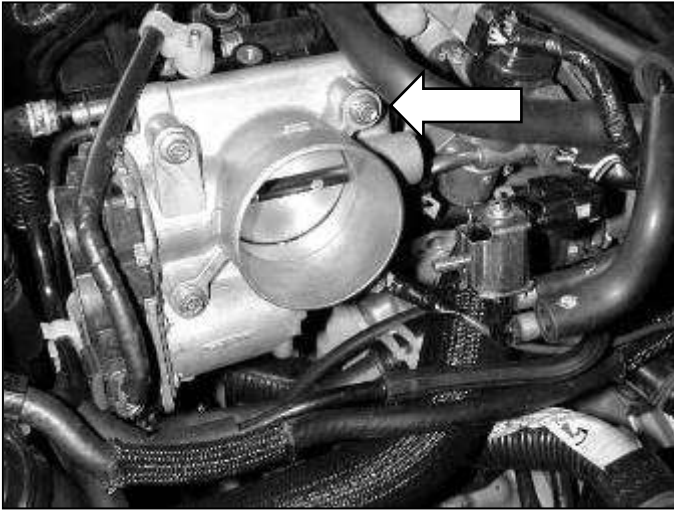
c. Cover the open nipple with the supplied vacuum cap.



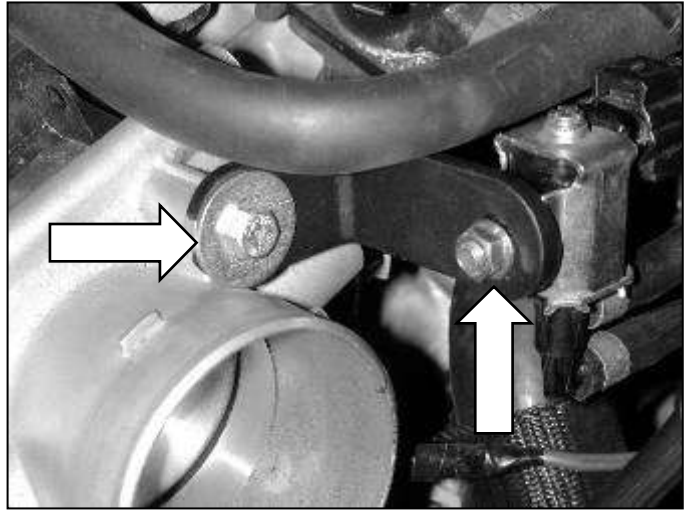
d. Remove the mass air flow sensor from the stock air box. Install the mass air flow sensor in the intake pipe using the supplied socket bolt 8-32 x 1/2" screws.



e. Install rubber mount as shown.



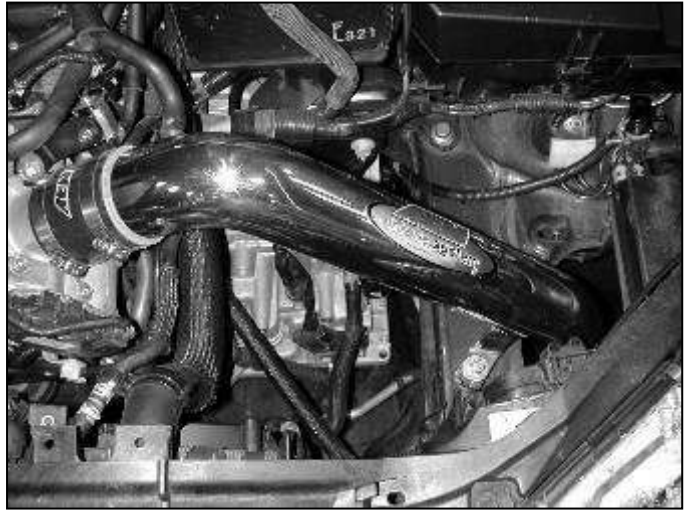
f. Remove the upper rear bolt on the throttle body.



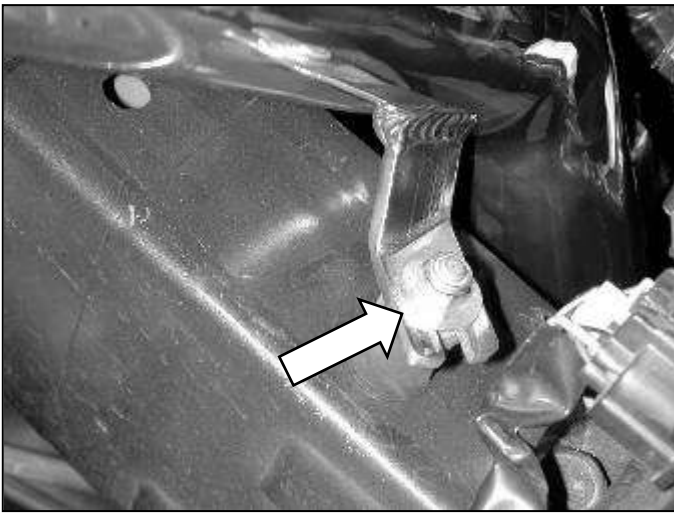
g. Use the supplied 65mm bolt and washer to secure the bracket to the throttle body. Install and reconnect the vacuum solenoid utilizing the stock nut as shown, which was removed in step 2e.



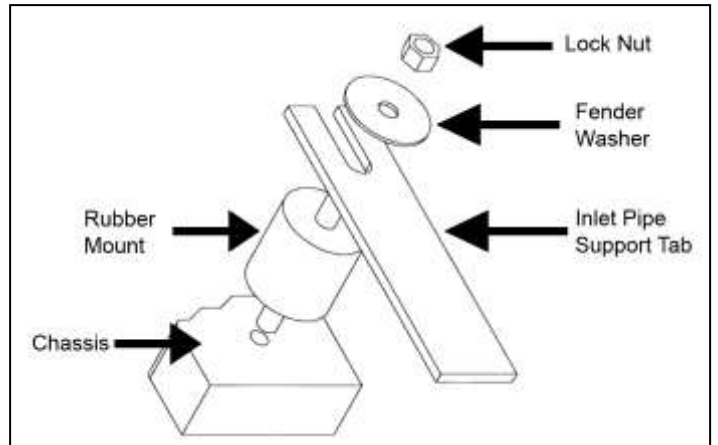
h. Attach the silicone hose to the throttle body using a supplied hose clamp.



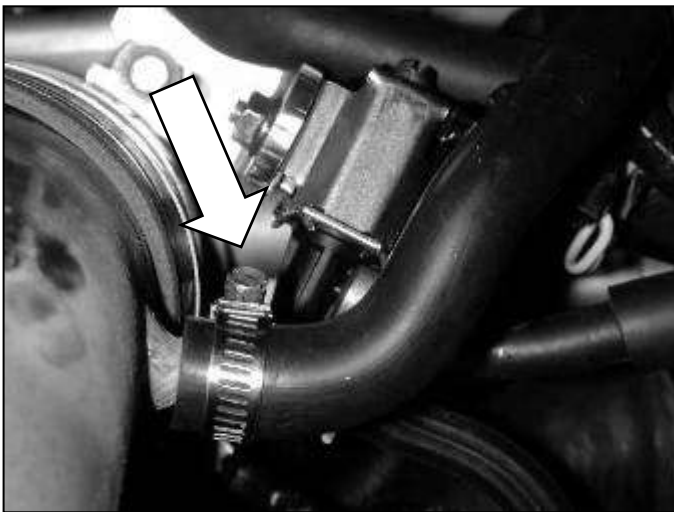
i. Place inlet pipe in engine bay as shown.



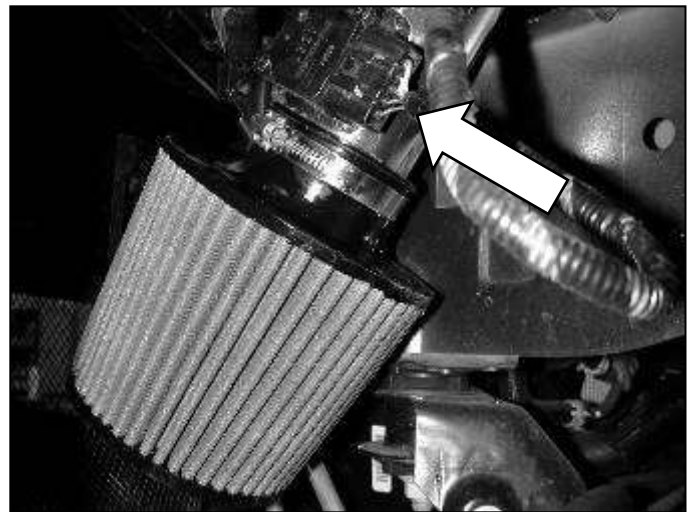
j. Place the inlet pipe support tab under the washer as shown. Refer to step '3k' for proper installation.



k. Proper installation of the rubber mount.



l. Secure the breather hose to the inlet pipe using the supplied hose clamp.



m. Install the air filter onto the end of the pipe. Plug in the air flow meter.



AEM® intake system installed

4. Reassemble Vehicle

- a. Replace the engine cover removed in step 1(e).
- b. **Fender liner:** Install the fender liner and any hardware that was removed in steps 2(j) through 2(k).
NOTE: Failure to install the fender liner will result in diminished performance and increase the potential for engine damage due to water ingestion in rainy conditions.
- c. **Wheel:** Install the front left wheel using the factory torque specification (see owner's manual).
- d. Position the inlet pipes for the best fitment. Be sure that the pipes or any other components do not contact any part of the vehicle. Tighten the rubber mount, all bolts, and hose clamps.
- e. Check for proper hood clearance. Re-adjust pipes if necessary and re-tighten them.
- f. Inspect the engine bay for any loose tools and check that all fasteners that were moved or removed are properly tightened.
- g. Reconnect negative battery terminal and start engine. Let the vehicle idle for 3 minutes. Perform a final inspection before driving the vehicle.
- h. Please note that AEM® bypass valves will not work with this application (part number 21-484). The use of a bypass valve could have adverse effects on the performance of the system.

5. CARB Sticker Placement

- a. The C.A.R.B. exemption sticker, (attached), must be visible under the hood so that an emissions inspector can see it when the vehicle is required to be tested for emissions. California requires testing every two years, other states may vary.

6. Service and Maintenance

- a. AEM Induction Systems requires cleaning the intake system's air filter element every 100,000 miles. When used in dusty or off-road environments, our filters will require cleaning more often. We recommend that you visually inspect your filter once every 25,000 miles to determine if the screen is still visible. When the screen is no longer visible some place on the filter element, it is time to clean it. To clean, purchase our Synthetic air filter cleaner, part number 99-0624 and follow the easy instructions.
- b. Use aluminum polish to clean your polished AEM® intake tube.
- c. Use window cleaner to clean your powder coated AEM® intake tube. (NOTE: DO NOT USE aluminum polish on powder coated AEM® intake tubes).

AEM Air Intake System Warranty Policy

AEM® warrants that its intake systems will last for the life of your vehicle. AEM will not honor this warranty due to mechanical damage (i.e. improper installation or fitment), damage from misuse, accidents or flying debris. AEM will not warrant its powder coating if the finish has been cleaned with a hydrocarbon-based solvent. The powder coating should only be cleaned with a mild soap and water solution. Proof of purchase of both the vehicle and AEM intake system is required for redemption of a warranty claim.

This warranty is limited to the repair or replacement of the AEM part. In no event shall this warranty exceed the original purchase price of the AEM part nor shall AEM be responsible for special, incidental or consequential damages or cost incurred due to the failure of this product. Warranty claims to AEM must be transportation prepaid and accompanied with dated proof of purchase. This warranty applies only to the original purchaser of product and is nontransferable. Improper use or installation, use for racing, accident, abuse, unauthorized repairs or alterations voids this warranty. AEM disclaims any liability for consequential damages due to breach of any written or implied warranty on all products manufactured by AEM. Warranty returns will only be accepted by AEM when accompanied by a valid Return Merchandise Authorization (RMA) number. Credit for defective products will be issued pending inspection. Product must be received by AEM within 30 days of the date RMA is issued.

If you have a warranty issue, please call (800) 992-3000 and our customer service department will assist you. A proof of purchase is required for all AEM warranty claims.

Intake systems for vehicles listed are 50 state legal. See AEMIntakes.com for CARB status on each part for a specific vehicle.