



Equipped with AEM® Dryflow™ Filter
No Oil Required!

INSTALLATION INSTRUCTIONS

PART NUMBER

21-745C (Gun Metal Grey Finish)

2015-17

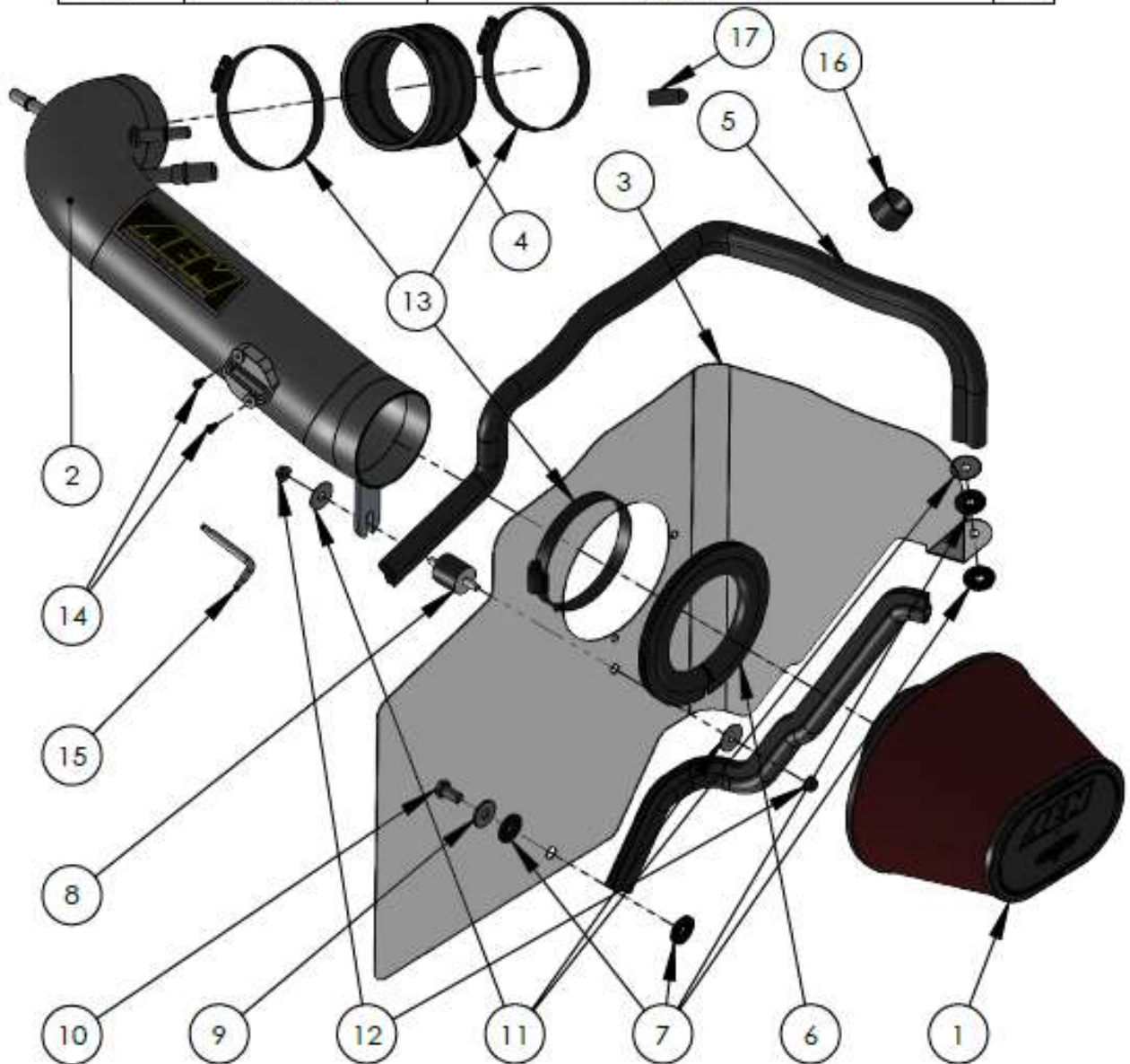
Ford

Mustang

5.0L

Not legal for sale or use on any pollution controlled motor vehicle in California or states adopting California emission procedures. See AEMIntakes.com for CARB status on each part for a specific vehicle.

ITEM NO.	PART NUMBER	DESCRIPTION	QTY.
1	AEM-21-2148DK	AIR FILTER	2
2	2-1517C	TUBE; 3.5"OD X 22", GUNMETAL GRAY	1
3	20-8542	HEAT SHIELD; 2015 FORD MUSTANG TB/PC	1
4	08654	HOSE; 3.50 ID x 2.2I; BLACK; EPDM 80	1
5	102489	EDGE TRIM; 3/4"BULB, TOP LOC., 30"L	1
6	AEM-8-4016	EDGE TRIM; 3/4"BULB, TOP LOC., 16"L	1
7	21685	WASHER; 1" X .300 X .100 RUBBER	4
8	1228599	MOUNT, RUBBER 1" X 6mm	1
9	559960	WASHER, 8mm	1
10	077002	BOLT; M8-1.25 X 16mm, HEX, SS	1
11	08160	WASHER; 1"D X 1/4 HOLE FENDER	3
12	444.460.04	NUT; M6 HEX SERRATED	2
13	08620K	1/2" BANDHOSE CLAMP, 3.15"-4.00"	3
14	1-2105	BOLT; SOCKET M4-.7 X 8mm	2
15	69801	WRENCH; TORX T20 T/R, L-KEY	1
16	08246	CAP; 15/16" ID, 3/4" L, BLK, EPDM	1
17	08214	RUBBER CAP	1



Read and understand these instructions **BEFORE** attempting to install this product. Failure to follow installation instructions and not using the provided hardware may damage the intake tube, throttle body and engine.

1. Preparing Vehicle

- a. Make sure vehicle is parked on level surface.
- b. Set the parking brake.
- c. If engine has run in the past two hours, let it cool down.
- d. Disconnect negative battery terminal.
- e. Do not discard stock components after removal of the factory system.
- f. Open the air intake kit package and make sure all parts are included.

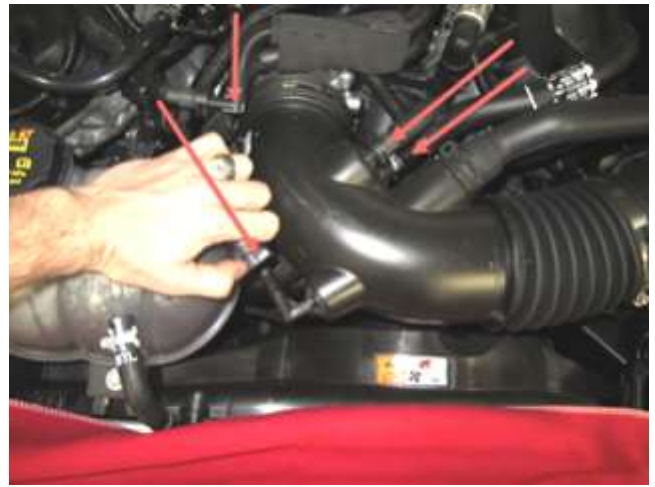
Tools Needed:

Flat Screw Driver	Pliers
10mm Socket	
Socket Driver	
Side Cutters	
4mm Hex Key	

2. Removal of stock system



a. Lift up firmly on engine cover front and back to disengage and remove the engine cover.



b. Release the 3 quick disconnect fittings from the factory intake duct and loosen its hose clamp at the throttle body.



c. Disconnect the sound transfer tube where shown above by pulling the hose off or cutting off its clamp. Use the cap in the kit to cover the hole.



d. Disconnect MAF sensor wiring and use needle nose pliers to pry the retaining clip out of the airbox (circled above). Remove the MAF sensor using the included TORX key and set aside.



e. Remove the 10mm bolt securing the factory airbox. Ensure that the nut clip does not fall into the fender well.



f. Pull the intake duct off the throttle body and lift out the factory intake assembly including the sound tube.

3. Installation of AEM® intake system.

a. When installing the intake system, do not completely tighten the hose clamps or mounting hardware until instructed to do so.



a. Assemble the heat shield according to the exploded view on page 2 of this document as shown including the edge trims & rubber mount below the intake tube hole.



b. Lower the heat shield into the vehicle taking care to align the shield between the fresh air supply and the radiator as shown above.



c. Using the bolt & washer assembly as shown on page 2, start the bolt into the threaded hole in the chassis as shown above.



d. Reinstall the factory fastener at the upper mounting tab location of the heat shield.



e. Assemble the intake tube components as shown above including the hose, clamps, and MAF sensor.



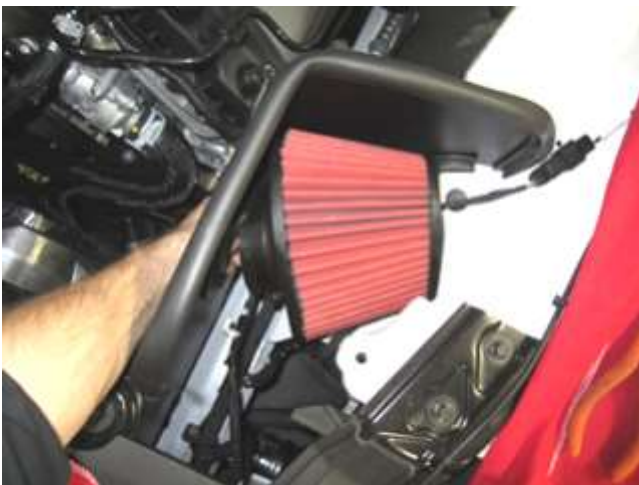
f. For models with only one PCV line, use the supplied vacuum cap to cover the extra nipple.



g. Release the other sensor wiring retaining clips. Pass the harness through the tube hole in the heat shield.



h. Lower the tube into the vehicle aligning the filter end in the heat shield first and then slipping the hose over the throttle body. Push on all lines as shown above until they click on securely. Ensure that wiring harness remains in front of the bracket on the bottom of the tube and reconnect to the MAF sensor.



i. Install remaining hose clamp on the filter and lower the filter into the vehicle as shown and twist into place once the flange has started on the end of the tube.



j. Install washer and nut on the bracket on the underside of the intake tube.



k. Slide filter clamp through the heat shield hole and tighten on the engine side of the shield ensuring that the clamp remains fully engaged on the filter.



o. Factory air induction system.



p. Finished installation of AEM Intake System.

4. Reassemble Vehicle

- a. Position all components for the best fitment. Ensure that no components contact any unintended part of the vehicle.
- b. Tighten all loose connections. Proper hose clamp torque is 30in-lbs,
- c. Inspect the engine bay for any loose tools and check that all fasteners that were moved or removed are properly tightened.
- d. Reconnect negative battery terminal and start engine. Let the vehicle idle for 3 minutes. Perform a final inspection before driving the vehicle.

5. Service and Maintenance

- a. AEM Induction Systems requires cleaning the intake system's air filter element every 100,000 miles. When used in dusty or off-road environments, our filters will require cleaning more often. We recommend that you visually inspect your filter once every 25,000 miles to determine if the screen is still visible. When the screen is no longer visible some place on the filter element, it is time to clean it. To clean, purchase our Synthetic air filter cleaner, part number 1-1000 and follow the easy instructions.
- b. Use window cleaner to clean your powder coated AEM[®] intake tube.

NOTE: DO NOT USE aluminum polish on powder coated AEM[®] intake tubes.

For technical inquiries
e-mail us at
sales@aemintakes.com
or
call us at
800.992.3000

AEM Air Intake System Warranty Policy

AEM® warrants that its intake systems will last for the life of your vehicle. AEM® will not honor this warranty due to mechanical damage (i.e. improper installation or fitment), damage from misuse, accidents or flying debris. AEM® will not warrant its powder coating if the finish has been cleaned with a hydrocarbon-based solvent. The powder coating should only be cleaned with a mild soap and water solution. Proof of purchase of both the vehicle and AEM® intake system is required for redemption of a warranty claim.

This warranty is limited to the repair or replacement of the AEM® part. In no event shall this warranty exceed the original purchase price of the AEM® part nor shall AEM® be responsible for special, incidental or consequential damages or cost incurred due to the failure of this product. Warranty claims to AEM® must be transportation prepaid and accompanied with dated proof of purchase. This warranty applies only to the original purchaser of product and is nontransferable. Improper use or installation, use for racing, accident, abuse, unauthorized repairs or alterations voids this warranty. AEM® disclaims any liability for consequential damages due to breach of any written or implied warranty on all products manufactured by AEM®. Warranty returns will only be accepted by AEM® when accompanied by a valid Return Merchandise Authorization (RMA) number. Credit for defective products will be issued pending inspection. Product must be received by AEM® within 30 days of the date RMA is issued.

If you have a warranty issue, please call (800) 992-3000 and our customer service department will assist you. A proof of purchase is required for all AEM® warranty claims.

Not legal for sale or use on any pollution controlled motor vehicle in California or states adopting California emission procedures. See AEMIntakes.com for CARB status on each part for a specific vehicle.