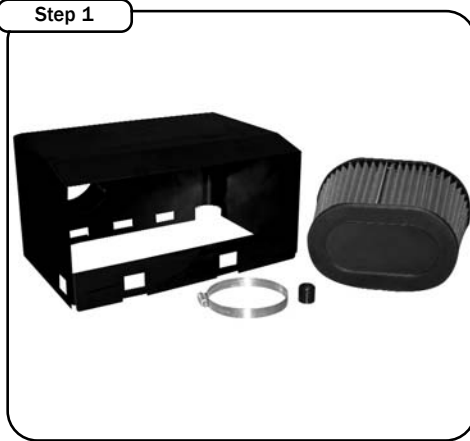




P.O. Box 1719  
 Corona, CA 92878  
 Support: 951-493-7100  
 www.aFeFilters.com

# Intake Kit Installation Instructions: 2002-2005 Dodge Ram V8 4.7/5.9L Magnum 5.7L Hemi

Kit Part #	51/54-10381	Tools Required	Part List:
Make:	Dodge	5/16" nut driver or slotted screwdriver	1 Air filter (replacement # 24-90030) or Pro Dry S™ 21-90030
Model:	Ram	Ratchet and extension	1 Intake housing
Engine:	4.7L/5.9L Magnum/ 5.7L Hemi		1 Vacuum cap
Year:	2002-2005		



Complete kit



Complete stock intake.



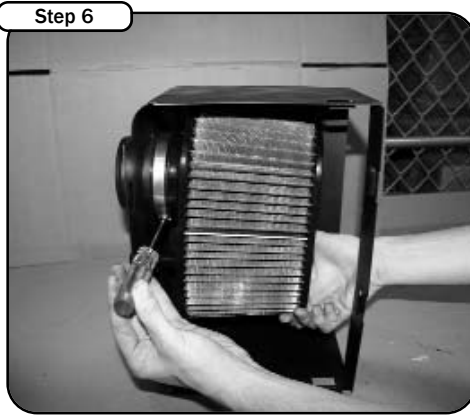
Loosen hose clamp on the air duct connecting to the airbox. Disconnect the breather hose (if equipped). Move air duct to the side



Loosen the four clips securing the upper portion of the airbox.



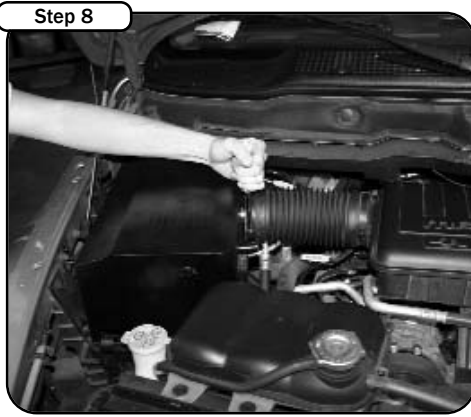
Remove upper portion of the airbox. Lift up and remove the factory paper filter.



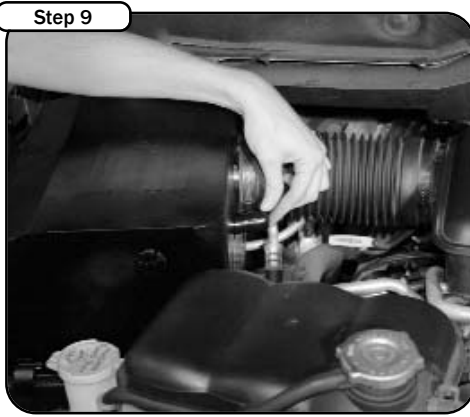
Insert and tighten your pre-oiled filter into the housing. Do not use any grease or oil.



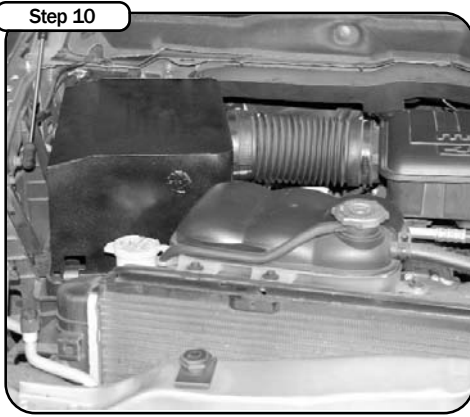
Insert housing assembly into the lower portion of the factory airbox. Secure housing with the factory airbox clips.



Re-connect air duct to the air filter housing. Tighten the factory hose clamp.



Re-connect your breather hose to the filter nipple. If your vehicle is not equipped with a breather hose, cap off the nipple with the supplied vacuum cap.



Your installation is now complete. Tighten all connections and clamps. Re-check after a few hours.

Note: Filter Cleaning and Re-oiling: When cleaning your aFe filter, be sure to use only aFe's "Restore Kit" (aFe P/N: 90-50001 blue oil aerosol, or aFe P/N: 90-50501 blue squeeze bottle oil or aFe P/N: 90-50000 gold oil aerosol, or aFe P/N: 90-50500 gold squeeze oil). Filter Replacement: Magnum FLOW PN: 24-90030 (black w/blue media). Pro Dry S™ P/N: 21-90030 Pro Dry S™ cleaning: see cleaning instruction sheet 06-00074