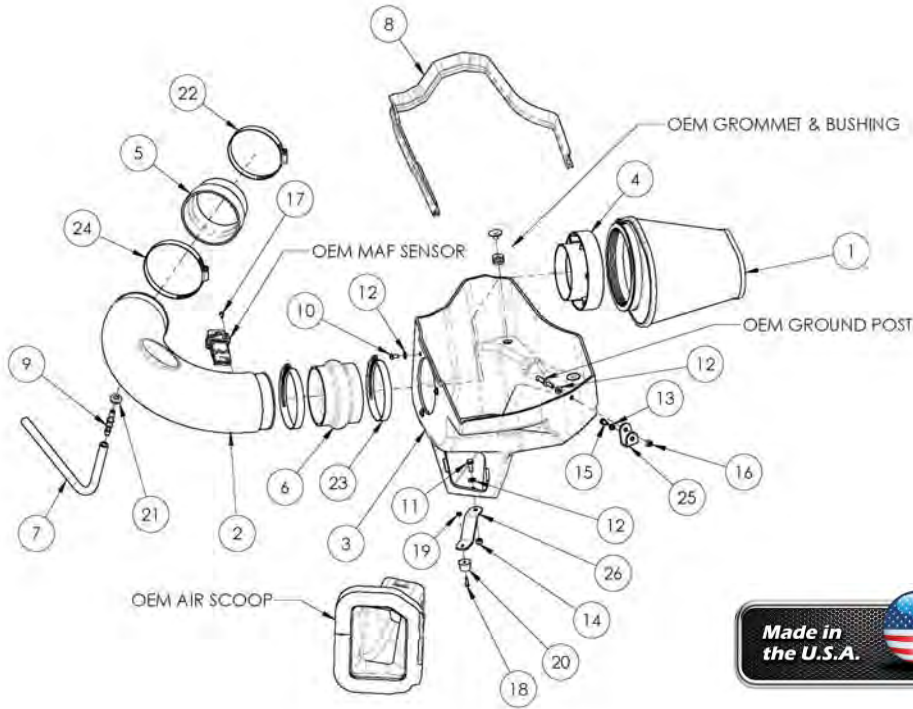




INTAKE SYSTEMS



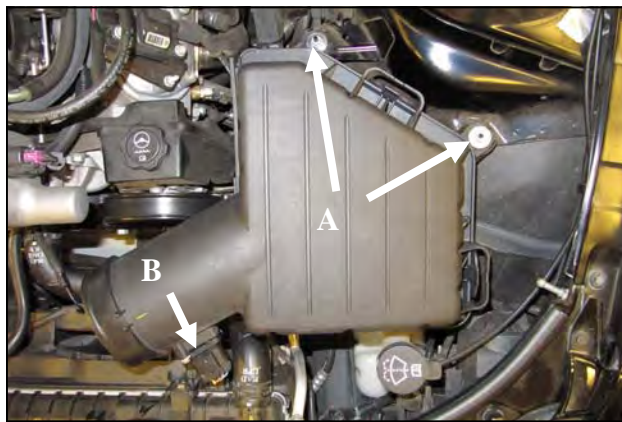
Installation Instructions Part Number 250-227 2010-11 Chevrolet Camaro SS 6.2L V-8 with Magnacharger Technical Note. A vehicle specific Computer Tune is required to successfully complete this modification.

720-242	Airaid Premium Filter	1
KIT227T	Air Meter Tube	1
KIT243CABS	Cold Air Box	1
KIT1121MAFADA	Filter Adapter	1
KITRDCR16	Silicone Reducer	1
KITHUMPHS13	Silicone Hump Hose	1
KITHOSE06	3/8" x 17" Breather Hose	1
KITWSTRIP03	Weather Strip 36"	1
KIT227HP	Hardware & Instructions	1
-KITFITTING23	3/8" Barbed Fitting	x1
-KIT15DHC3050	1/4-20 x 1/2" Button Head Bolt	x3
-KIT25C75HCSS	1/4-20 x 3/4" Hex Head Bolt	x1
-KIT09FWZ019	1/4" Flat Washer	x5
-KIT09LWZ025	1/4" Lock Washer	x1
-KIT25CNNES	1/4" Lock Nut	x1
-KIT60C120HCS	M6x1.0x12mmHexHead Bolt	x1
-KIT60CNFHPZ	6mm Flange Nut	x1
-KIT15BHC3038	8-32x3/8" ButtonHead Screw	x2
-KIT15BHC3063	8-32x 5/8" Button Head Screw	x1
-KIT8CNKEPZ	#8 Kep Nut	x1
-KITBMP02	Bumper	x1
-KITGRMT18	3/8 Grommet	x1
-KITHS60	#60 Hose Clamp	x1
-KITHS64	#64 Hose Clamp	x2
-KITHS68	#68 Hose Clamp	x1
-KIT243SB	Side Bracket	x1
-KIT243LB	Bottom Bracket	x1
-KIT110T	Zip Tie	x3

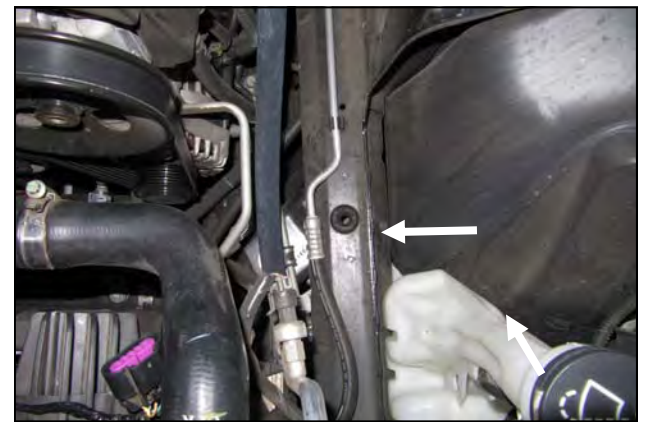


Disconnect negative battery cable.

1. Loosen the hose clamps on the throttle body and the airbox. Disconnect the crankcase breather and remove the intake tube.



2. A.) Using a deep 10mm socket, remove and save the two nuts that secure the factory airbox to the fender well. B.) Disconnect the Mass Airflow sensor.



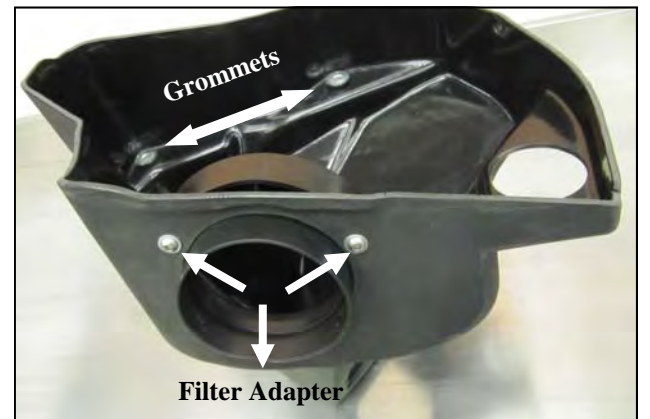
3. Lift the complete air intake assembly straight up and out of the vehicle. Use caution not to loose the factory grommet when you remove the air intake assembly.



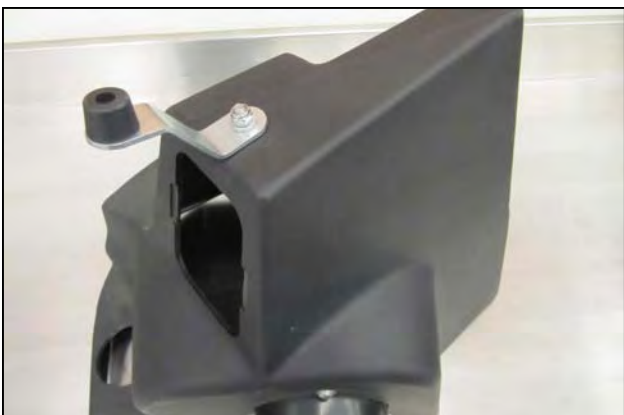
4. Compress the sides of the factory intake scoop and remove it from the factory airbox. It will be reused in step #8.



5. Remove the two steel inserts, and grommets from the factory airbox. Save these pieces, they will be reused.



6. Reinstall the two steel sleeves and grommets into the Airaid Cold Air Box or CAB (#3). Next install the Filter Adapter (#4) as shown using three 1/4-20 Button Head Bolts (#10), and 1/4" Flat Washers (#12). Refer to the line drawing above for details.



7. Turn the Cold Air Box upside down and mount the Bottom Bracket (#26) using one 1/4-20x3/4" Hex Head Bolt (#11), 1/4" Flat Washer (#12), and 1/4" Lock Nut (#14) as shown. Next using one 8-32x5/8" Button Head Screw (#18), and the #8 Kep Nut (#19), attach the Plastic Bumper (#20) to the Bracket as shown.



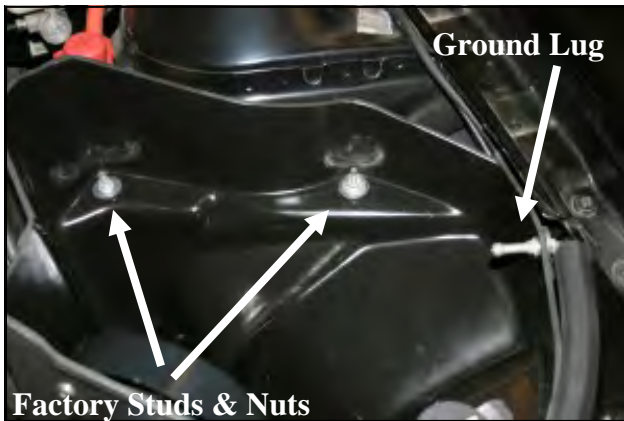
8. Reinstall the factory scoop into the Airaid Cold Air Box with the inlet angled upward . It will snap into place.



9. Using a 10mm wrench, remove and save the ground lug from the driver's side inner fender. It will be reused in step #11.



10. Replace the ground lug from step #11 with the Side Bracket (#25) as shown using one 6mmx12mm Hex Head Bolt (#14), and Lock Washer (#12).

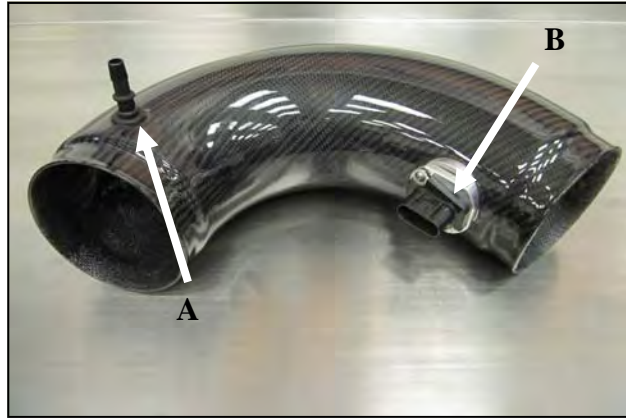


Factory Studs & Nuts

11. Install the Airaid CAB assembly into the vehicle locating the factory grommets over the factory studs. Reinstall the factory nuts from step 2. onto the studs. Reinstall the factory ground lug thru the CAB and into the side bracket using one flat washer (#12), and one 6mm flange nut (#16).

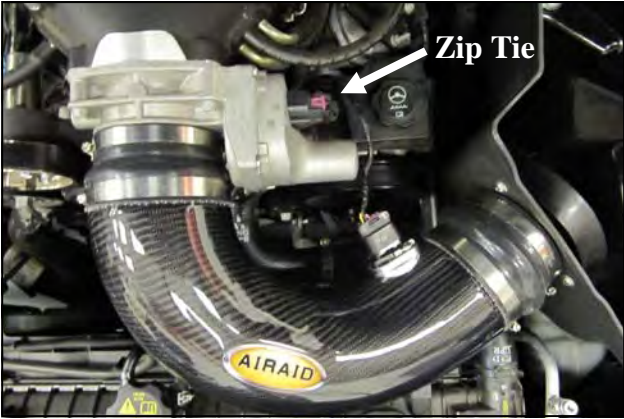


12. Install the Hump Hose (#6) onto the Filter Adapter using two #64 hose clamps (#23). Next install the Reducing Coupler (#5) with one #60 Hose Clamp (#22) on the throttlebody side and one #68 Hose Clamp (#24) on the open end.



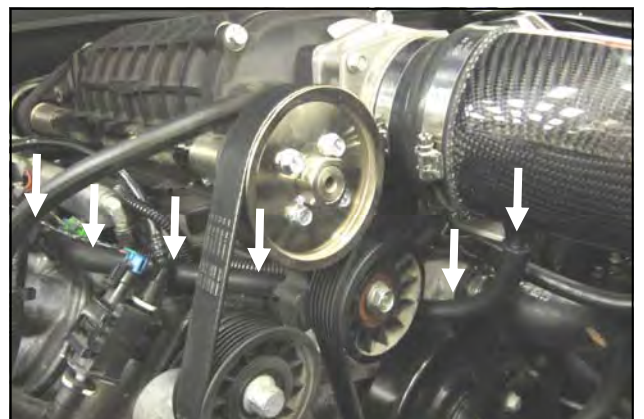
13. A.) Install the 3/8" Grommet (#21) and Barbed Fitting (#9) into the small hole in the Airaid Intake Tube (#2) as shown.

B.) Transfer the Mass Airflow sensor from the factory airbox into the Airaid Intake Tube and secure using the two 8-32 x3/8 Screws (#17). **Do not attempt to use the factory screws.**



Zip Tie

14. Install the Airaid Intake Tube into the Hump Hose first, and then into the Reducing Coupler. Adjust for fit, and tighten all four hose clamps. Re connect the Mass Airflow Sensor and secure the wire harness to the throttlebody harness using a single Zip Tie (#27)



15. Install the 3/8" Breather Hose onto the Barbed Fitting and carefully route it behind the pulleys, following the wiring harness. Connect the other end of the breather line to the hard line from step 1. Secure the breather line behind using the two remaining Zip Ties once you have determined it is safe from all moving parts.



16. Install the Airaid Premium Filter (#1) onto the Filter Adapter and tighten the Clamp. Next install the Weather Strip (#8) onto the top of the Cold Air Box with the contour rolling away from the Filter.

Double check your work! Make sure there is no foreign material in the intake path. Make sure all clamps, hoses, bolts, and screws are tight. Reconnect the Battery



A Note Regarding Custom Tuning

This intake system is not calibrated to any ECU program and is not to be used without being custom tuned.

Off the shelf aftermarket REPROGRAMERS (Superchips, Hypertech etc.) DO NOT constitute "custom tuning" .

Custom tuning is vehicle specific tuning, for that vehicle, and unique to its modifications. In other words it is ONE OFF programming. Since this tuning is unique to each vehicle, AIRAID can not offer any assistance regarding any Tuning issues .

Failure to properly tune after installation of this system will result in poor performance and possible engine damage.



Don't Forget Your AIRAID Filter Tune-Up Kit!



P/N 790-551 Aerosol Spray
P/N 790-550 Squeeze Spray

Thank you for purchasing the Airaid Intake System. Contact Airaid @ (800) 498-6951 8:00 AM - 5:00 PM MST weekdays for questions regarding fit or instructions that are not clear to you. Your Airaid Intake System was carefully inspected and packaged. Check that no parts are missing, or were damaged during shipping. If any parts are missing, contact Airaid. The air filter element is protected from direct exposure to water and debris; care should be taken not to drive through deep water. WATER INGESTION IS THE DRIVERS RESPONSIBILITY! The air filter is reusable and should be cleaned using the Airaid Filter Tune-Up Kit periodically.