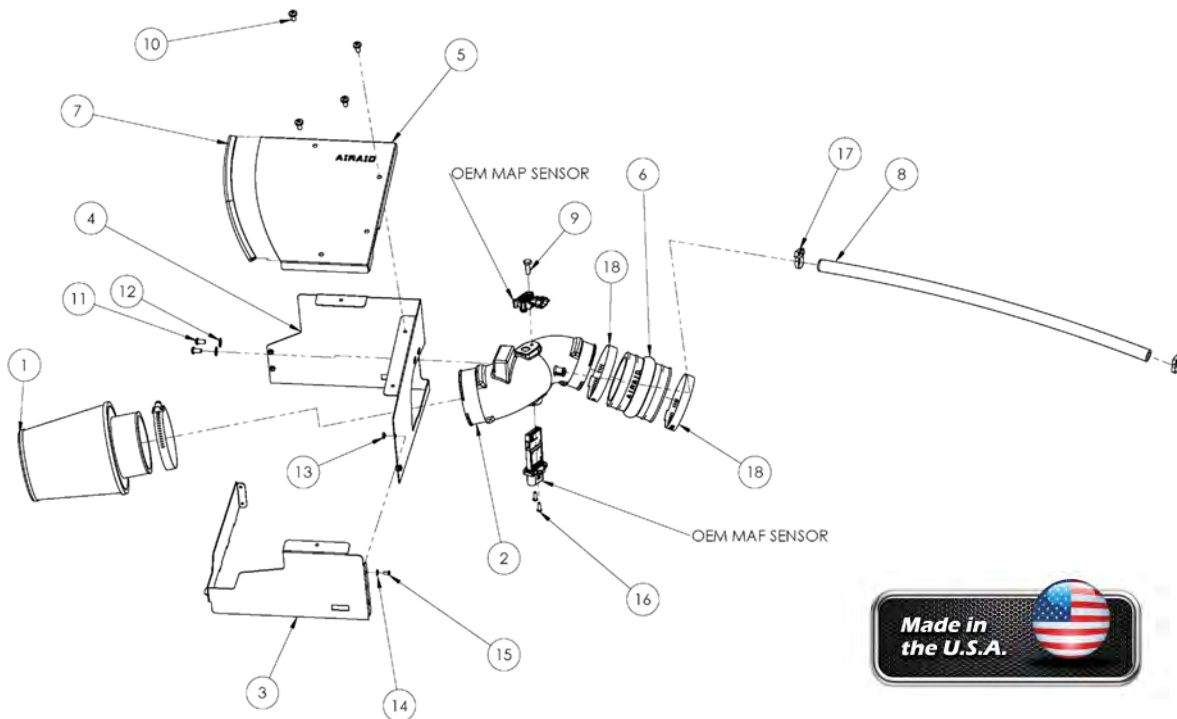




## INTAKE SYSTEMS



## Installation Instructions Part Number 250-261 2010-11 Cadillac SRX 3.0L

### Packing List:

#1	700-450	Airaid Premium Filter	1
#2	KIT261T	Airaid Intake Tube	1
#3	KIT261FPC	Front Panel	1
#4	KIT261RPC	Rear Panel	1
#5	KIT261TPC	Top Panel	1
#6	KITHUMPHS06	Urethane Hump Hose	1
#7	KITX1011	Rubber Edge Trim 10 3/4"	1
#8	KITHOSE01	1/2" Breather Hose 23"	1
#8	KIT261HP	Hardware & Instructions	1
#9	KIT25C75HCSS	1/4-20 x 3/4" Hex Bolt	1
#10	KIT1408MPPBZKC	1/4-20 x 1/2" Phillips Head Screw	4
#11	KIT15DHC3050	1/4-20x 1/2" Button Head Bolt	2
#12	KIT09FWZ019	1/4" Flat Washer	2
#13	KIT6CNKEPZ	#6-32 Kep Nut	4
#14	KIT6NWSAPZ	#6 Flat Washer	4
#15	KIT6C31MXPPZ	#6-32 x 5/16 Pan head screw	4
#16	KIT15BHC3050	#8-32 x 1/2" Button Head Screw	2
#17	KITSNP16M4	#16 Speed Clamp	2
#18	KITHS52	#52 Hose Clamp	2

### Tools Required For Installation:

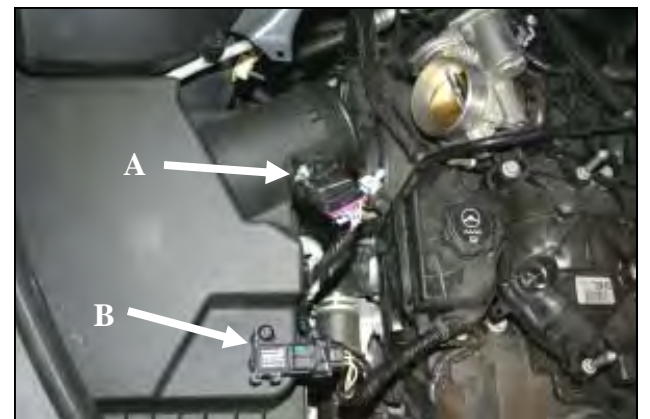
Phillips head screw driver  
3/32", 5/32", Allen Wrenches, T-15, T-20 Torx driver, 7/16" Wrench, Ratchet & Extension 5/16", 10mm sockets  
Needle nose pliers,



1. **Disconnect the negative battery cable.** Remove the oil fill cap and then lift up on the front of the engine cover to remove it from the vehicle. Replace the oil cap for now to make sure nothing falls into the valve cover during the install.



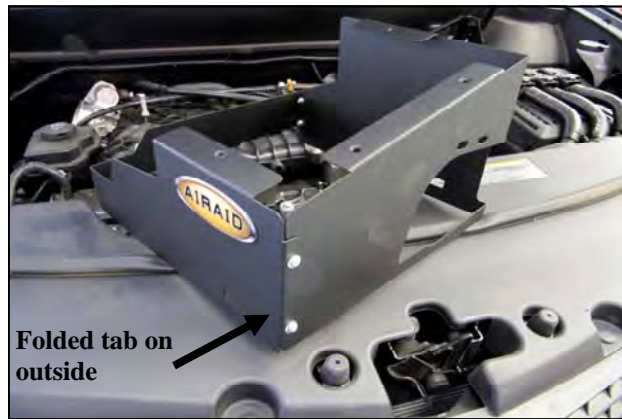
2. A) Loosen the hose clamps on the factory intake tube. B) Disconnect the crank case breather line at the valve cover, and remove the factory intake tube. C) Unfasten the 3 Factory air box clips.



3. Disconnect the Mass Air Flow, or MAF sensor (A) and the MAP sensor (B) from the factory airbox lid.



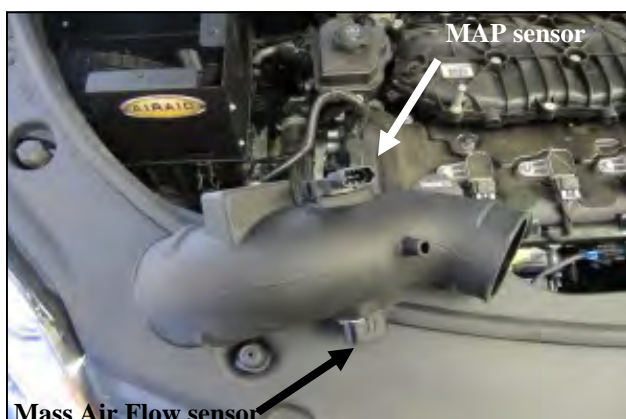
4. Turn the factory airbox lid over and locate the wire harness anchor. Using a pair of needle nose pliers, compress the ribs of the anchor and remove it. Remove the factory air filter and set it aside.



5. Join the two Airaid panels together with the folded tabs on the **outside**, using the four 6-32 screws (#15), #6 Flat washers (#14), and #6 Keps Nuts (#13).



6. Slip the Airaid Panel tabs into the slots in the factory airbox and partially install the Panel assembly onto lower half of the factory airbox as shown. Do not latch the airbox clips at this time.



7. Transfer the air sensors from the factory airbox lid into the Airaid Intake Tube(#2) as shown. **Do Not Use The Factory Hardware.** Secure the Mass Air Flow sensor using the two #8-32 screws (#16), and the MAP sensor using the 1/4-20x 3/4 hex head bolt (#9) and 1/4" Flat Washer (#12).



8. Place a #52 Hose Clamp (#18) onto each end of the Hump Hose (#6), and slide onto the Throttle body side of the Intake Tube as shown. Do not tighten the clamps at this time.

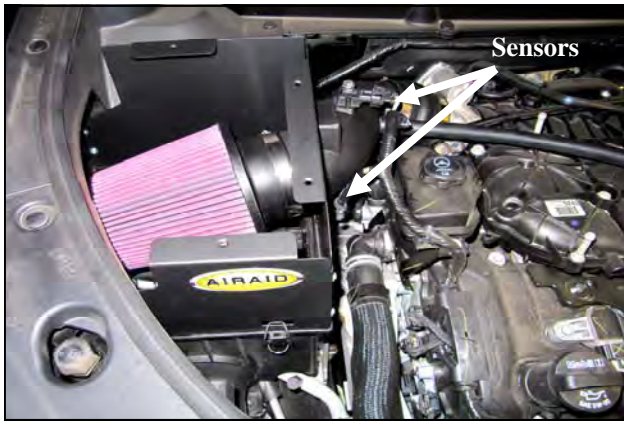


9. A) Insert the Filter end of the Intake Tube into the Panel assembly opening and guide the Coupler side onto the throttle body. B) Rotate the Intake Tube until the mounting holes are aligned with the Panel holes. Secure the Intake Tube to the panel assembly using the two 8-32 button head screws (#16). C) Tighten the Hose Clamps, and fasten the airbox clips at this time.





11. Attach the 1/2" Breather Hose to the Intake Tube nipple and the factory valve cover fitting. Secure using the Speed Clamps (#17).



12. Install the Airaid Premium Filter (#1) to the Intake Tube. Reconnect the Mass Air Flow and MAP sensors.



13. A) Attach the Weather Strip (#7) to the curved edge of the Top Panel (#5). B) Attach the Top Panel to the Airaid Performance Airbox using the four 1/4-20 Phillips Head Screws. Reinstall the engine cover and the oil fill cap.

**14. Double check your work!**

Make sure there is no foreign material in the intake path. Make sure all clamps, hoses, bolts, and screws are tight. Double check the hood clearance.

*Before!*



*After!*



Thank you for purchasing the Airaid Intake System. Contact Airaid @ (800) 498-6951 8:00 AM - 5:00 PM MST weekdays for questions regarding fit or instructions that are not clear to you. Your Airaid Intake System was carefully inspected and packaged. Check that no parts are missing, or were damaged during shipping. If any parts are missing, contact Airaid. The air filter element is protected from direct exposure to water and debris; care should be taken not to drive through deep water. WATER INGESTION IS THE DRIVERS RESPONSIBILITY



**Don't Forget Your AIRAID Filter Tune-Up Kit!**

P/N 790-551 Aerosol Spray  
P/N 790-550 Squeeze Spray

