

AIR AID[®]

INTAKE SYSTEMS

300-149 INSTALLATION INSTRUCTIONS

2002-05 Dodge Ram 4.7L

NOTE: DOES NOT FIT 2006 DODGE RAM

Thank you for purchasing the Airaid Intake System. Please read the instruction manual carefully before proceeding with the installation. Contact Airaid @ (800) 498-6951 8:00 AM - 5:00 PM MST weekdays for questions regarding fit or instructions that are not clear to you. Your Airaid Intake System was carefully inspected and packaged. Check that no parts are missing, or were damaged during shipping. If any parts are missing, contact Airaid. The air filter element is protected from direct exposure to water and debris; care should be taken not to drive through deep water. WATER INGESTION IS THE DRIVERS RESPONSIBILITY! The air filter is reusable and should be cleaned using the Airaid Filter Tune-Up Kit periodically.

Thank you for selecting Airaid.



Packing List:

| | | |
|---------------|-------------------------|---|
| KIT925T | Modular Intake Tube | 1 |
| KITHUMPHS01 | Silicone Hump Hose | 1 |
| 700-445 | Airaid Premium Filter | 1 |
| KIT125-1DC | Cool Air Dam | 1 |
| KITWSTRIP02 | Weather Strip 33 1/4" | 1 |
| KIT149HP | Hardware & Instructions | 1 |
| - KITHS56 | #56 Hose Clamp | 1 |
| - KITHS60 | #60 Hose Clamp | 2 |
| - KITSNP16M4 | #16 Speed Clamp | 3 |
| - KITSNP19M4 | #18 Speed Clamp | 1 |
| - KITSNP24GHS | #24 Speed Clamp | 1 |

Packing List (cont'd):

| | | |
|---------------|-----------------------|---|
| - KITGRMT01 | Grommet Plug for 2002 | 1 |
| - KITGRMT02 | Grommet 2003-2004 | 1 |
| - KITHOSE01 | 1/2" x 4 1/2" Hose | 1 |
| - KITELBOW01 | 90° Plastic Elbow | 1 |
| - KIT106CAP | Rubber Hose Cap | 1 |
| - KIT125-1CAP | Black Rubber Cap | 1 |

Tools Required for this Installation:

Flat Head Screwdriver
10mm Wrench

Installation Instructions Read Me!



1. Disconnect the negative battery cable and loosen the two hose clamps on the factory air tube



2. **2004 Models Only:** Disconnect the factory breather hose from the factory air box lid.



3. Unsnap and remove the factory air box lid, tube, & factory air filter.



4. Loosen and remove the two 10mm bolts holding on the factory throttle body air chamber intake assembly.



5. **2002 & 2003 Models Only:** Disconnect the crankcase vent hose on the back of the factory throttle body air chamber.



6. **2003 & 2004 Models Only:** Disconnect air temperature sensor wire on back of factory throttle body air chamber and remove sensor. Retain sensor for later use with the Airaid Intake System.



7. Unsnap the factory intake assembly from front of bracket and remove assembly from vehicle. (*Note: leave the factory coupler on the throttle body*)



8. **2002 Models Only:** Install rubber grommet plug into the hole on the side of the Airaid tube.



9. **2003 & 2004 Models Only:** Install rubber grommet w/thru hole and insert the factory air temperature sensor into the grommet.



10. Position the Airaid Cool Air Dam in place of the original air box lid. Snap in place.

PROUDLY MADE IN THE
USA 

Continued on next page...



11. Mount the Airaid Premium filter inside the Cool Air Dam & secure with hose clamp provided. In addition, install the weather strip hood seal on the Cool Air Dam. (*Hint: begin in a corner and work it on toward the ends*)



12. Install black hump hose onto the Airaid tube and secure using a # 60 hose clamp provided.



13. Position Airaid tube into place by connecting hump hose to Airaid Cool Air Dam and connect the other end of the tube to the factory throttle body coupler. Utilize the #60 hose clamps on the hump hose and #56 hose clamp on the factory coupler.



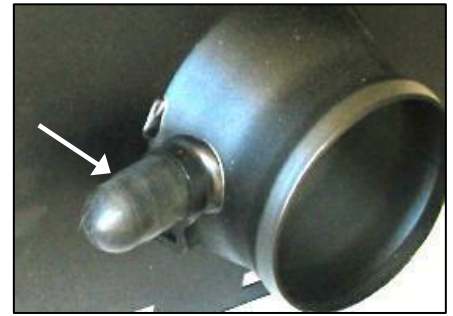
14. Re-connect air temperature sensor connector to the sensor in the Airaid tube.



15. 2002 & 2003 Models Only: Use the 90° plastic elbow provided, connect the factory breather hose with the 4 1/2" hose to the Airaid tube & secure using the three #16 black Speed clamps.



16. 2004 Models Only: Slide the provided rubber cap over the nipple at the throttle body end of the Airaid tube.



17. 2002 & 2003 Models Only: Slip the black rubber cap over the nipple on the Cool Air Dam and secure using the #19 Snapper clamp provided.



18. 2004 Models Only: Connect the factory breather hose to the Airaid Cool Air Dam & secure using the #24 Snapper clamp provided.

19. Double check your work to be certain that all nuts, bolts, and clamps are securely fastened.

20. Reconnect the negative battery cable.



Before



After!



Don't Forget Your AIRAID Filter Tune-Up Kit!

P/N 790-550



Instructions Revision
Date: 10/20/05