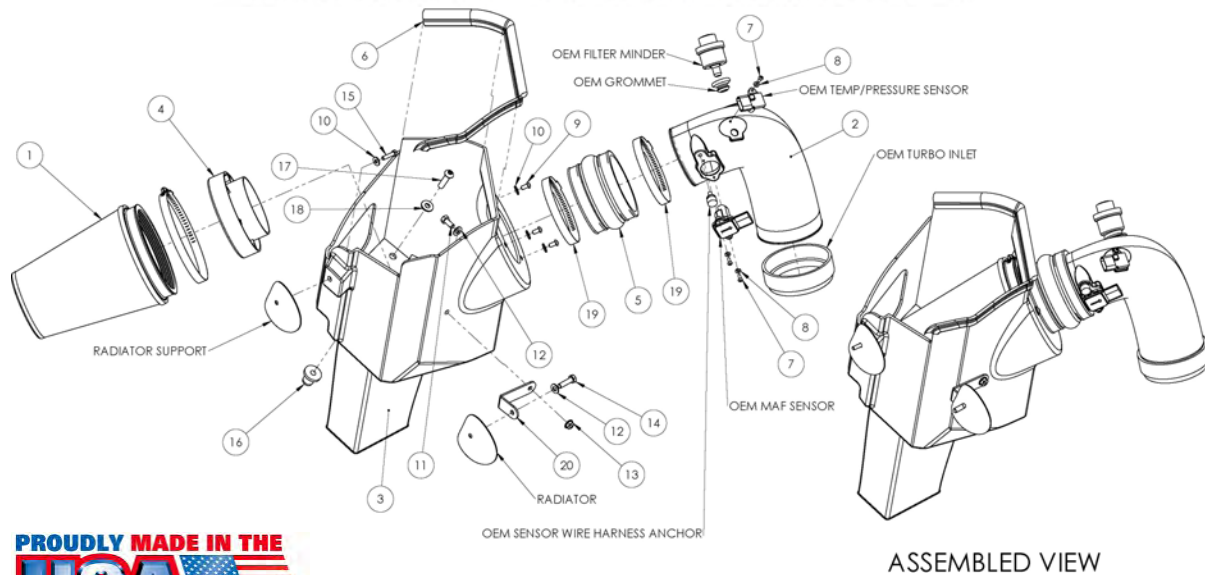




## INTAKE SYSTEMS



PROUDLY MADE IN THE  
**USA**

## Installation Instructions Part Number 300-221 MXP 2007-09 Dodge Ram 6.7L Cummins Diesel

### Packing List:

#1	700-469	Airaid Premium Filter	1
#2	KIT221T	Airaid Intake Tube	1
#3	KIT259CAB	Cool Air Box	1
#4	KIT1121MAFADA	Filter Adapter	1
#5	KITHUMPHS05	Urethane Hump Hose	1
#6	KITWSTRIP03	Weather Strip 22"	1
	KIT221HP	Hardware & Instructions	1
#7	KIT15BHC3050	8/32 x 1/2" Button Head Screw	3
#8	KIT15FW3016	#8 Flat Washer	3
#9	KIT15DHC3050	1/4-20 Button Head Bolt	3
#10	KIT09FWZ019	1/4" Flat Washer	4
#11	KIT31C75HCS5	5/16-18 x 3/4" Hex Head Bolt	1
#12	KIT25NWUSPZ	5/16" Flat Washer	2
#13	KIT31CNNEH	5/16" Flange Nut	1
#14	KIT20CSCZ300	M8 x 1.25 x 30mm Hex Bolt	1
#15	KIT60C25OHCS	M6 x 1 x 25mm Hex Bolt	1
#16	KITNUT01	3/8-16 Well Nut	1
#17	KIT15BHC3150	3/8-16 x 1 1/2" Button Head	1
#18	KIT31NWUSPZ	3/8" Flat Washer	1
#19	KITHS72	#72 Hose Clamp	2
#20	KIT259B	#259 L-Bracket	1
	KITBIT01	T20 Torx Bit	1

### Tools Required For Installation:

Ratchet & Extension  
7mm, 1/4", 5/16", 10mm, 13mm, 1/2" Sockets  
3/32, 5/32", 7/32" Allen Wrenches  
1/2" Wrench  
T20 Torx Bit (supplied)



#### 1. Disconnect the negative battery cables.

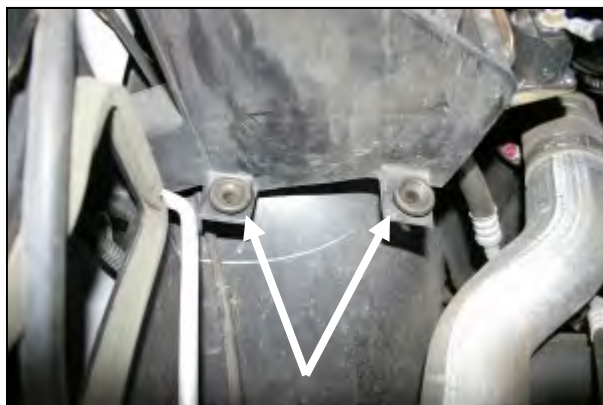
A) Remove the factory filter minder and grommet from the factory air cleaner lid, and set them aside for reinstallation later. B) Using the supplied #20 Torx bit, remove two screws from the Mass Air Flow sensor, and one screw from the temperature sensor. Remove both sensors and the wiring harness anchor from the airbox lid, and set them aside. C) Loosen the hose clamp that holds the factory intake tube to the airbox lid.



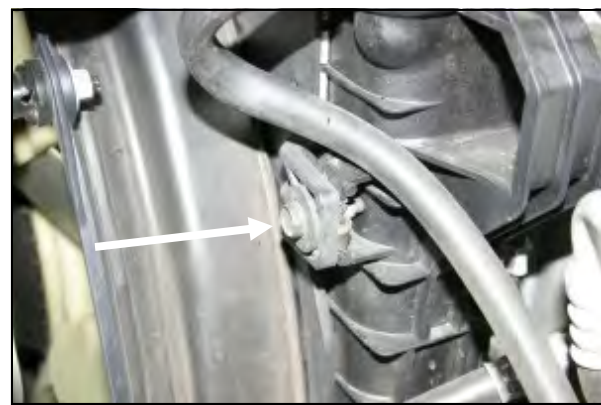
2. Using a 10mm socket, remove the nut that secures the factory airbox to the radiator support. Next slide the flexible intake tube off of the factory airbox lid and then rock the factory airbox assembly side to side to release it from the mounting grommets, and remove it from the vehicle.



3. Loosen the hose clamp that secures the factory intake tube assembly to the rubber elbow on the turbo inlet, and remove the assembly from the vehicle.



4. Remove the two grommets that held the factory airbox in position.



5. Using a 13mm socket remove one bolt that secures the fan shroud to the radiator on the passenger side of the vehicle.



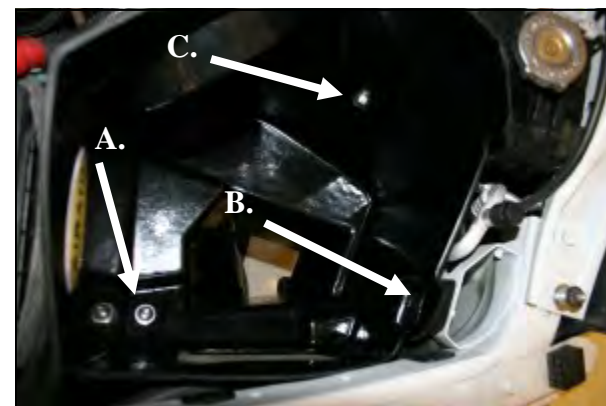
6. Install the L-bracket (#20) onto the radiator shroud as shown using one M8 x 30mm bolt (#14) and one flat washer (#12) as shown. Leave the bolt slightly loose for now.



7. Install the supplied well nut (#16) into the factory airbox mounting hole closest to the fender as shown.



8. Install the filter adapter (#4) into the Cool Air Box (#3) using three 1/4" Button Head bolts (#9) and flat washers (#10) as shown.



9. Install the CAB into the vehicle as shown. A.) Install the 3/8" button head bolt (#17) and flat washer (#18) thru the CAB and into the well nut. B.) Install the M6 x 25mm hex bolt (#15) and flat washer (#10) thru the CAB and into the captured nut in the fender. C.) Install the 5/16" bolt (#11) flat washer (#12), and flange nut (#13) thru the CAB and L-bracket. Tighten all mounting bolts at this time.



10. Install the supplied hump hose (#5) onto the filter adapter using two #72 hose clamps (#19). Leave the clamps loose for now.



11. Install the Airaid Intake Tube (#2) into the factory turbo elbow and then into the hump hose. Adjust for fit, and then tighten all three hose clamps. Reinstall the factory grommet and filter minder, intake temperature sensor and Mass Air Flow sensor into the Airaid Intake Tube using three 8-32 button head screws (#7) and #8 flat washers (#8). **Do Not Use The Factory Screws!** Reinstall the factory wiring harness anchor into the hole in the Airaid Intake Tube.



12. Install the Airaid Premium Filter (#1) onto the filter adapter and tighten the clamp. Install the weather strip onto the top of the CAB starting at the right fender and working your way towards the radiator.

### 13. Double check your work!

Make sure there is no foreign material in the intake path. Make sure all clamps, hoses, bolts, and screws are tight.

### 14. Reconnect the negative battery cables!

Thank you for purchasing the Airaid Intake System. Contact Airaid @ (800) 498-6951 8:00 AM - 5:00 PM MST weekdays for questions regarding fit or instructions that are not clear to you. Your Airaid Intake System was carefully inspected and packaged. Check that no parts are missing, or were damaged during shipping. If any parts are missing, contact Airaid. The air filter element is protected from direct exposure to water and debris; care should be taken not to drive through deep water. WATER INGESTION IS THE DRIVERS RESPONSIBILITY! The air filter is reusable and should be cleaned using the Airaid Filter Tune-Up Kit periodically.

*Before!*



*After!*



## Don't Forget Your AIRAID Filter Tune-Up Kit!



P/N 790-551 Aerosol Spray  
P/N 790-550 Squeeze Spray



Instructions Revision  
Date: 11/14/08