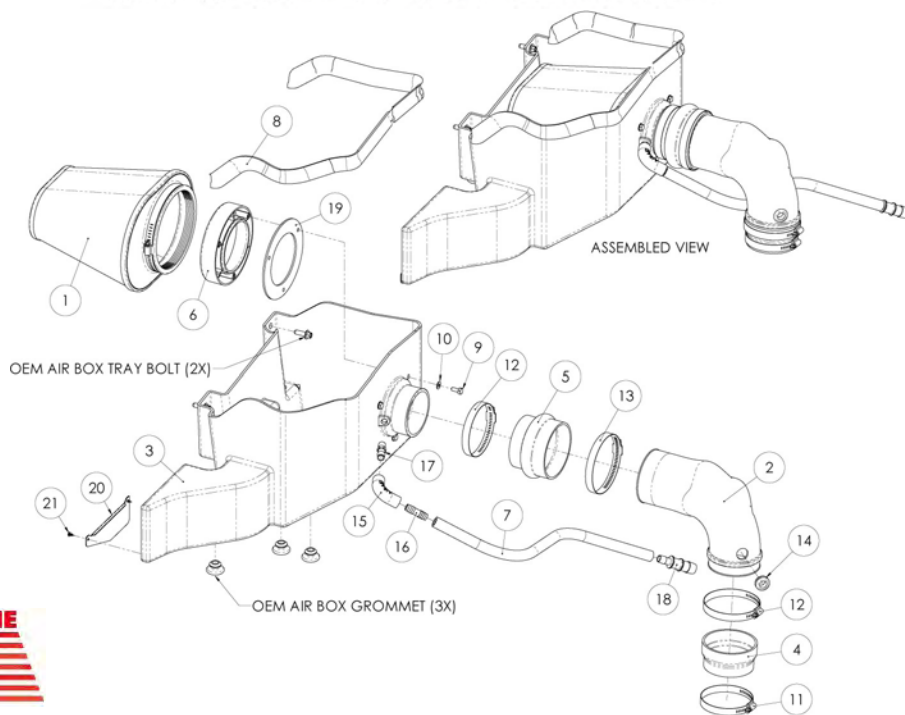




INTAKE SYSTEMS



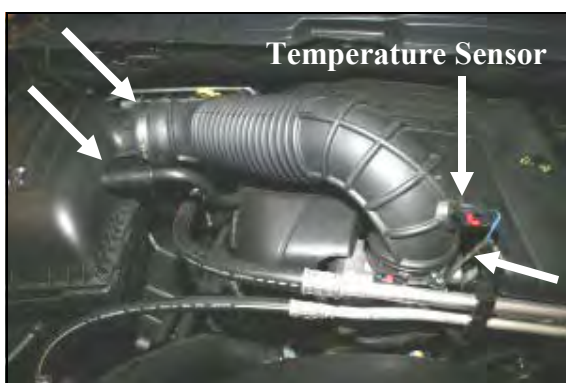
Installation Instructions Part Number 300-237 2009-12 Dodge Ram 1500/2500/3500 5.7L V-8

Packing List:

#1	720-476	Airaid Premium Filter	1
#2	KIT237T	Airaid Intake Tube	1
#3	KIT220CAB	Cool Air Box	1
#4	KITRDCR14	Silicone Reducer Coupler	1
#5	KITHUMPHS24	Silicone Hump Hose	1
#6	KIT214FADA	Filter Adapter	1
#7	KITHOSE01	1/2" x 22" Breather Hose	1
#8	KITWSTRIP03	Weather Strip 33"	1
	KIT237HP	Hardware & Instructions	1
#9	KIT25C62HCSS	1/4-20 x 5/8" Hex Bolt	3
#10	KIT09FWZ019	1/4" Flat Washer	3
#11	KITHS52	#52 Hose Clamp	1
#12	KITHS60	#60 Hose Clamp	2
#13	KITHS64	#64 Hose Clamp	1
#14	KITGRMT02	Grommet	1
#15	KITELBOW04	1/2" x 90° Elbow	1
#16	KITFITTING08	1/2" x 1/2" Barbed Connector	1
#17	KITFITTING09	1/4"NPT x 1/2" Barbed Fitting	1
#18	KITFITTING18	1/2" x 3/4" Barbed Connector	1
#19	KIT214G	Adapter Gasket	1
#20	KIT237ASPC	Air Scoop Panel	1
#21	KIT115MPPAZ016	#8 x 3/8" Pan Head Screw	2

Tools Required For Installation:

5/16", 7/16", 10mm, 13mm Sockets
9/16" Wrench
Ratchet & Extension
Phillips Screwdriver



Temperature Sensor

1. Disconnect the negative battery cable! Locate the temperature sensor on the air intake tube. Slide the red tab, squeeze the black tab on the electrical connector, and then disconnect the temperature sensor wiring harness. Now **carefully**, remove the sensor from the tube using a slow circular motion. Save the sensor for reinstallation later. Disconnect the crankcase breather tube from the air filter box. Loosen one hose clamp at each end of the air intake tube and remove it from the vehicle.



2. Lift up the front of the engine beauty cover, and then pull it towards you to remove it from the vehicle. It is only held in position by rubber grommets.



3. Using a 13mm socket, remove the two bolts that hold the air cleaner mount to the inside right fender. Save them for reinstallation in step #10.



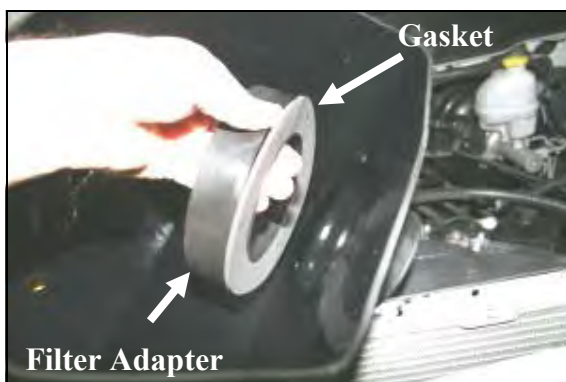
4. Rock the airbox back and forth as you are lifting it straight up to remove it from the vehicle. It is only held in by grommets.



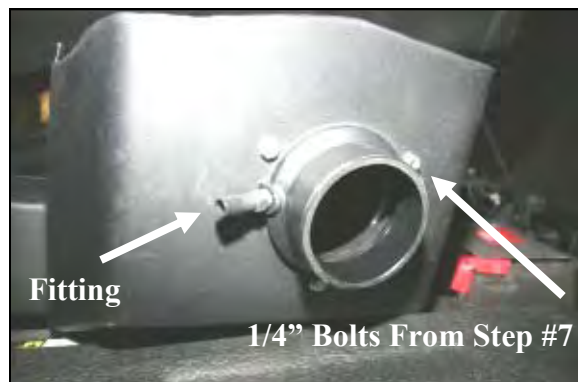
5. Remove and save three grommets from the bottom of the factory airbox. They will be reused in step #6.



6. Install the three grommets removed in step #5 into the bottom of the Airaid Cool Air Box (CAB) (#3) at the locations shown here.



7. Install the adapter gasket (#19) and filter adapter (#6) into the CAB using three 1/4-20 x 5/8" bolts (#9) and flat washers (#10) as shown. Refer to the line drawing above for reference.



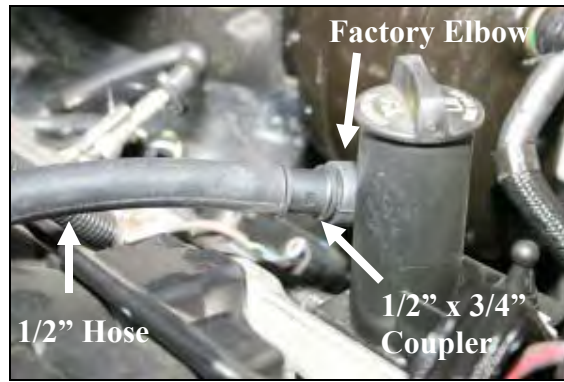
8. Install the 1/4" NPT x 1/2" barbed fitting (#17) into the filter adapter as shown.



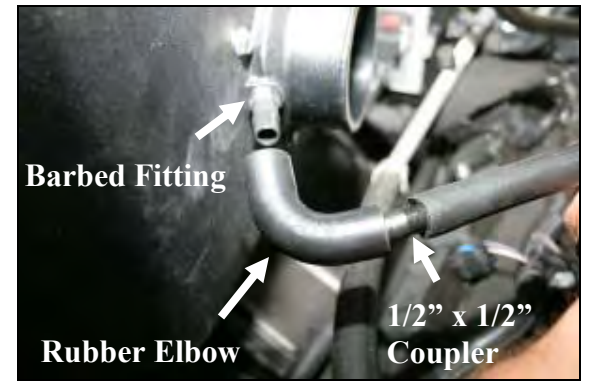
9. Install the air scoop panel (#20) onto the scoop of the CAB using two #8 x 3/8" self tapping screws (#21) as shown.



10. Install the CAB into the vehicle by aligning the grommets over the locating pins on the factory air-box mount. Reinstall the factory bolts into the fender that were removed in step #3.



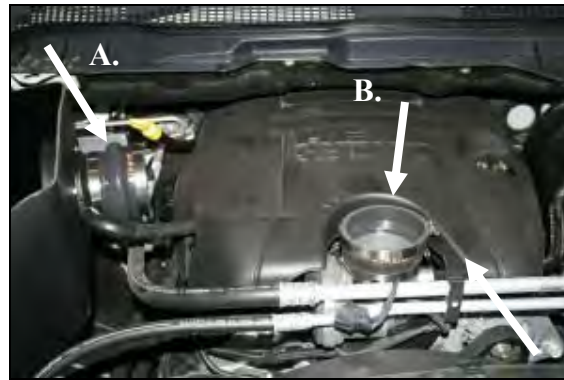
11. Remove the factory hard plastic breather tube from the rubber elbow behind the oil filler neck and then install the supplied 1/2" x 3/4" plastic reducing coupler (#18), into the factory rubber elbow as shown. Next, connect the supplied 1/2" x 22" hose (#7) to the coupler.



12. Install the supplied 1/2" x 1/2" plastic coupler (#16) into the 1/2" hose from step #11. Next connect the 1/2" rubber elbow (#15) between the 1/2" connector and the barbed fitting on the filter adapter.



13. Reinstall the factory beauty cover making sure that the grommets are aligned with the grommet posts and that the crankcase breather hose is aligned in the slot on the side of the cover.



14. A.) Install the supplied hump hose (#5) onto the filter adapter using one #60 hose clamp (#12) and one #64 hose clamp (#13). B.) Install the reducing coupler (#4) onto the throttlebody using one #52 hose clamp (#11) and one #60 hose clamp (#12). Leave the clamps loose for now.



15. Install the supplied grommet (#14) into the hole in the Airaid Intake tube(#2). Next carefully install the factory intake air temperature sensor into the grommet



16. Install the Airaid Intake tube into the hump hose first, and then into the coupler on the throttlebody. Tighten all four hose clamps, and then reconnect the intake air temperature sensor wiring harness.



17. Install the Airaid Premium Filter (#1) onto the filter adapter and tighten the clamp. Next install the weather strip (#8) on the top of the CAB as shown. (Hint: Start at one end of the CAB and work your way towards the other end.)

18. Double check your work!

Make sure there is no foreign material in the intake path. Make sure all clamps, hoses, fasteners, and wiring connections are tight.

19. Reconnect the negative battery cable!

Thank you for purchasing the Airaid Intake System. Contact Airaid @ (800) 498-6951 8:00 AM - 5:00 PM MST weekdays for questions regarding fit or instructions that are not clear to you. Your Airaid Intake System was carefully inspected and packaged. Check that no parts are missing, or were damaged during shipping. If any parts are missing, contact Airaid. The air filter element is protected from direct exposure to water and debris; care should be taken not to drive through deep water. WATER INGESTION IS THE DRIVERS RESPONSIBILITY! The air filter is reusable and should be cleaned using the Airaid Filter Tune-Up Kit periodically.

Before!



After!



Don't Forget Your AIRAID Filter Tune-Up Kit!



P/N 790-551 Aerosol Spray
P/N 790-550 Squeeze Spray



Instructions Revision
Date: 12/01/11