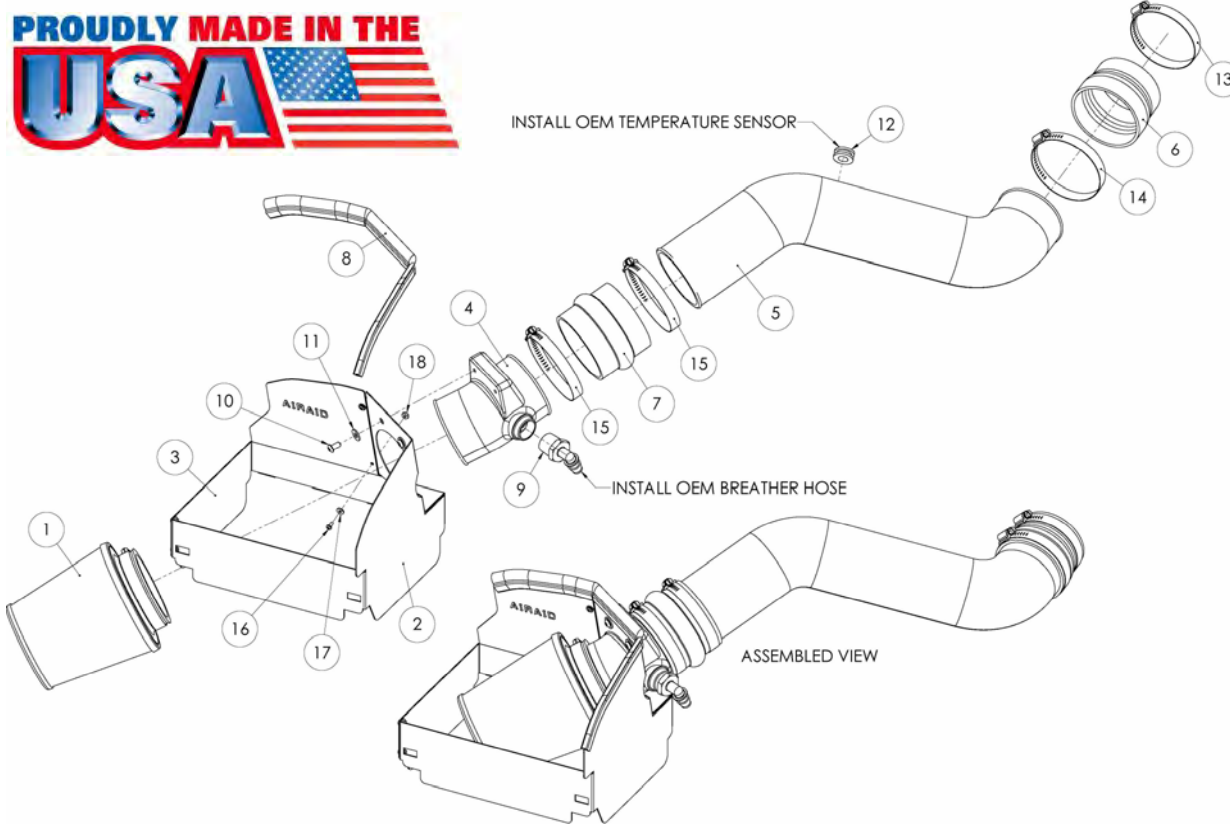


AIR AID®

INTAKE SYSTEMS



INSTALL OEM TEMPERATURE SENSOR



Installation Instructions Part Number 310-205 2005-07 Jeep Grand Cherokee 3.7L V-6

Packing List:

#1	700-452	Airaid Premium Filter	1
#2	KIT205MAFC	MAF Panel	1
#3	KIT205FPC	Front Panel	1
#4	KIT143A	Air Filter Adapter	1
#5	KIT44T	Modular Intake Tube	1
#6	KITRDCR01	Reducer	1
#7	KITHUMPHS03	Urethane Hump Hose	1
#8	KITWSTRIP02	Weather Strip 17"	1
	KIT205HP	Hardware & Instructions	1
#9	KITELBOW07	90° Nylon Fitting	1
#10	KIT15DHC3050	¼ - 20 x 1/2" Button Head Screw	2
#11	KIT09FWZ019	¼" Flat Washer	2
#12	KITGRMT03	Rubber Grommet	1
#13	KITHS48	#48 Hose Clamp	1
#14	KITHS52	#52 Hose Clamp	1
#15	KITHS60	#60 Hose Clamp	2
#16	KIT6C31MXPPZ	6-32 x 5/16" Phillips Screw	5
#17	KIT6NWSAPZ	#6 Flat Washer	5
#18	KIT6CNKEPZ	6-32 Keps Nut	5

Tools Required For Installation:

5/32" Allen Wrench
5/16" Socket
Ratchet & Extension
Phillips Screwdriver



1. Disconnect the negative battery cable.

Loosen the hose clamp that holds the factory intake tube to the resonator.



2. Unlatch the two clips on the factory air cleaner box lid.



3. Disconnect the factory breather tube from the air cleaner box lid.



4. Remove the air cleaner lid, and factory intake tube from the resonator box.



5. Remove the factory air filter.



6. Disconnect the intake air temperature sensor wiring harness, by squeezing the tab on the side, and sliding the connector off.



7. Using a 5/16" socket, ratchet and extension (or flat blade screw driver), loosen the hose clamp on the throttle body. This clamp is located close to the fire-wall, in the center of the engine compartment.



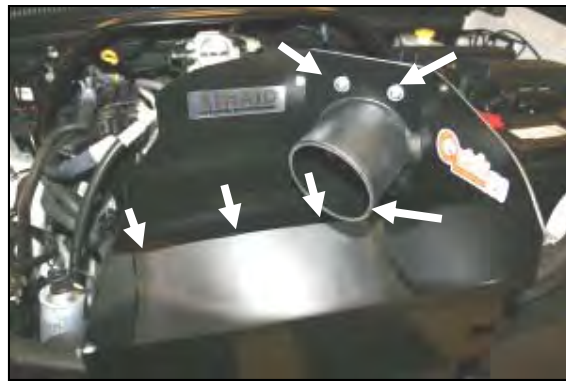
8. Remove the factory intake resonator box from the throttle body by pulling the box towards the radiator and then lifting up.



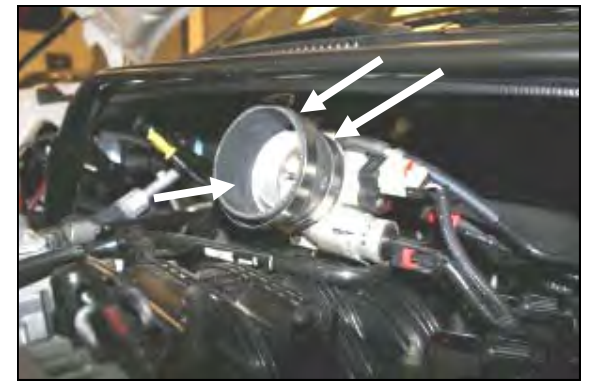
9. Assemble the Quick Fit panels (#2, #3) as shown, using five 6-32 screws (#16), #6 flat washers (#17), and 6-32 keps nuts (#18).



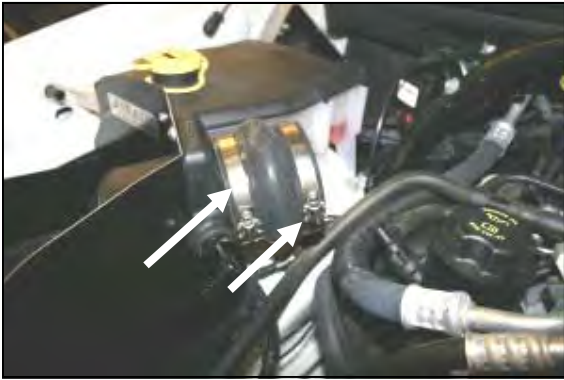
10. Install the supplied 90° nylon fitting (#9), into the air filter adapter (#4) as shown.



11. Install the Quick Fit panels into the factory lower airbox by lining up the three tabs in the rear of the panel, and the latch holes in the front, and then re-latching the factory airbox clips. Next, using two 1/4-20 x 1/2" button head screws (#10) and 1/4" flat washers (#11), install the air filter adapter into the Quick Fit Panel.



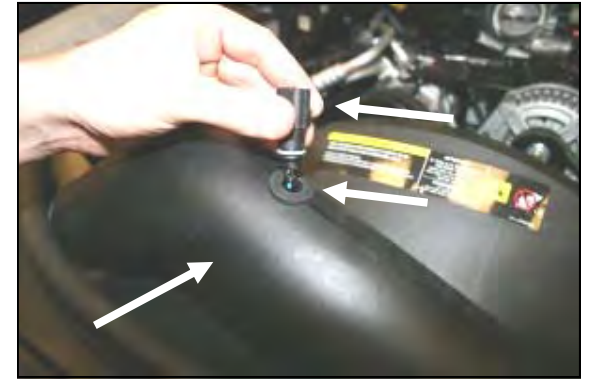
12. Install the provided reducer (#6) onto the throttle body with the smaller diameter towards the throttle body. Place the #48 hose clamp (#13) on the smaller diameter section of the reducer (throttle body side). Place the #52 hose clamp (#14) on the larger diameter side of the reducer. Leave the clamps loose for now.



13. Install the urethane hump hose (#7) onto the air filter adapter using two #60 hose clamps (#15) on each side of the hump hose. Tighten only the clamp on the air filter adapter. Leave the other clamp loose for now.



14. Remove the factory intake air temperature sensor from the resonator box by carefully twisting the sensor body, and pulling it straight out of its mount. Place the sensor in a safe location, it will be re-used in step #15.



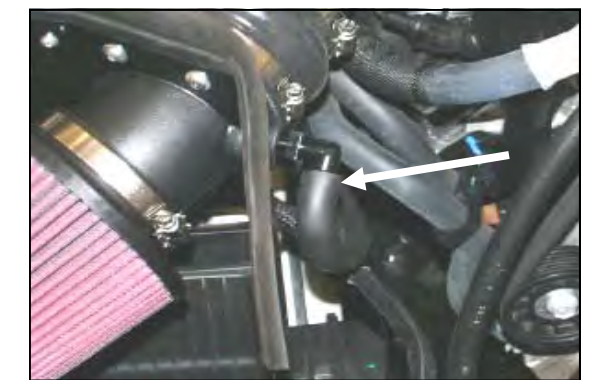
15. Install the rubber grommet (#12) into the Modular Intake Tube (#5). Next, slide the factory intake air temperature sensor into the grommet in the tube. Make sure it is seated all of the way in.



16. A.) Install the Modular Intake tube into the hump hose end first. B.) Insert the opposite end of the Modular Intake tube into the reducer, on the throttle body. Adjust the components for fit, and then tighten all of the hose clamps, and reconnect the factory intake air temp sensor wiring harness.



17. Install the Airaid Premium Filter (#1) onto the air filter adapter. Next, install the weather strip (#8) on the top of the Quick Fit panels as shown.



18. Reconnect the factory breather hose onto the 90° nylon fitting (#9).

19. Double check your work!

Make sure there is no foreign material in the intake path. Make sure all clamps, hoses, bolts, and screws are tight.

20. Reconnect the negative battery cable!

Included with your Airaid Intake System is a sticker with a California Air Resources Board (C.A.R.B.) Executive Order (EO) number. This sticker must be placed in plain view inside of the engine compartment. Failure to do so may prevent you from passing a smog inspection.

Before!



After!



Thank you for purchasing the Airaid Intake System. Contact Airaid @ (800) 498-6951 8:00 AM - 5:00 PM MST weekdays for questions regarding fit or instructions that are not clear to you. Your Airaid Intake System was carefully inspected and packaged. Check that no parts are missing, or were damaged during shipping. If any parts are missing, contact Airaid. The air filter element is protected from direct exposure to water and debris; care should be taken not to drive through deep water. WATER INGESTION IS THE DRIVERS RESPONSIBILITY! The air filter is reusable and should be cleaned using the Airaid Filter Tune-Up Kit periodically.



P/N 790-551 Aerosol Spray
P/N 790-550 Squeeze Spray



Instructions Revision
Date: 06/19/07