



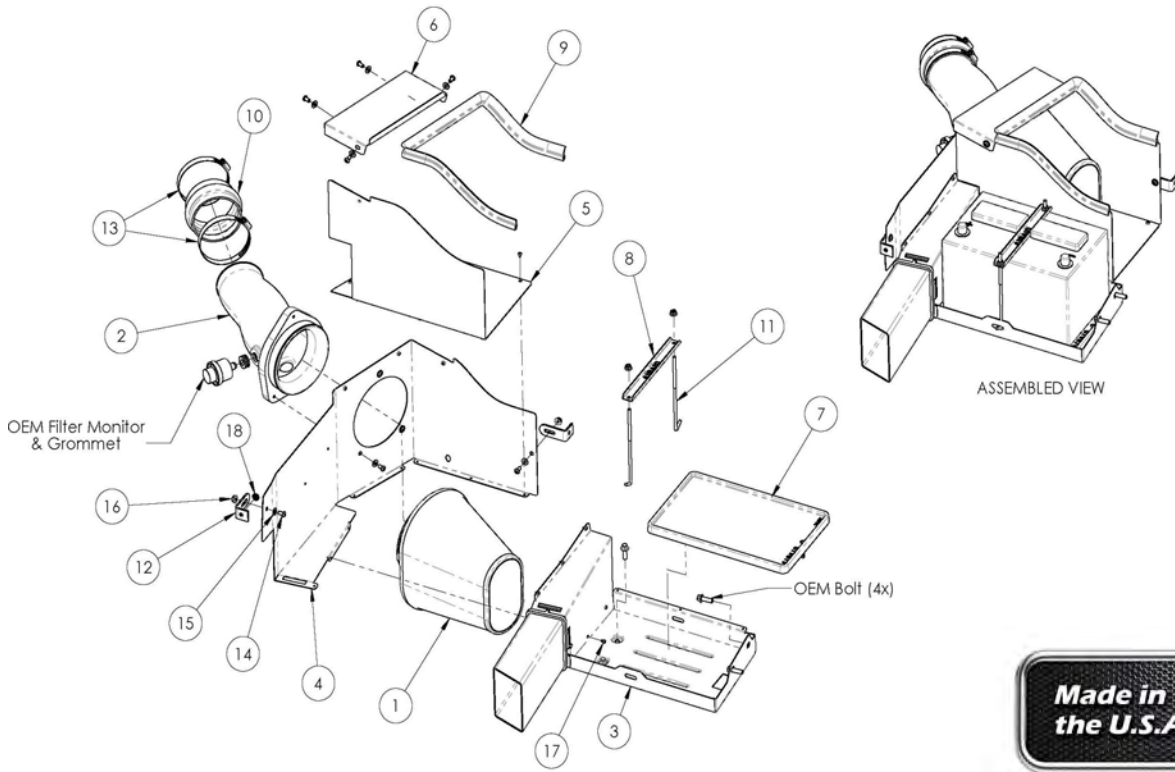
INTAKE SYSTEMS

Installation Instructions

Part Number 400-246 1999-03 Ford Superduty Truck

Packing List:

#1	720-472	Airaid Premium Filter	1
#2	KIT246T	Airaid Intake Tube	1
#3	KIT246BPC	Bottom Panel	1
#4	KIT246MAFC	Side Panel	1
#5	KIT246DAMC	Air Dam	1
#6	KIT246LID	CAD Lid	1
#7	KIT246BT	Battery Mat	1
#8	KIT246BC	Battery Tie Down	1
#9	KITWSTRIP02	Weather Strip 29"	1
#10	KITHUMPHS12	Silicone Hump Hose	1
	KIT246HP	Hardware & Instructions	1
#11	KITJBOLT07	1/4-20 J Bolt	2
#12	KIT140B	Bracket 140	2
#13	KITHS64	#64 Hose Clamp	2
#14	KIT15DHC3050	1/4-20 x 1/2" Button Head Bolt	10
#15	KIT09FWZ019	1/4" Flat washer	10
#16	KIT1420WZZF	1/4-20 Flange nut	5
#17	KIT11TCPPCZ016	8-32 Thread Cutting Screw	14
#18	KIT20WFCZ060	6mm Flange Nut	1



Tools Required For Installation:

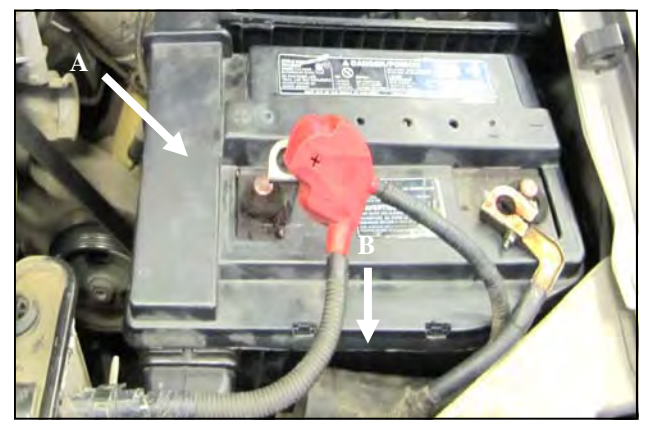
- 5/32" Allen Wrench
- 5/16", 7/16", 1/2" Sockets
- 13mm, 10mm Deep Sockets
- Ratchet & Extension
- 7/16", 1/2" Wrenches
- Phillips Screwdriver



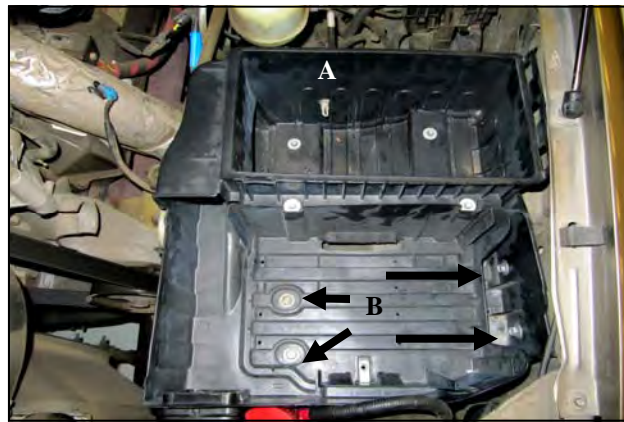
1. **Disconnect the battery cables.**
Disconnect both the Drivers side and Passenger side battery cables.



2. **A.)** Disconnect the filter minder in the top of the airbox.
B.) Loosen the clamp on the turbo inlet and unclip the airbox top to remove the factory intake and airfilter.



3. **A.)** Remove the factory battery cover.
B.) Using a 5/16" socket, remove the factory battery hold down.



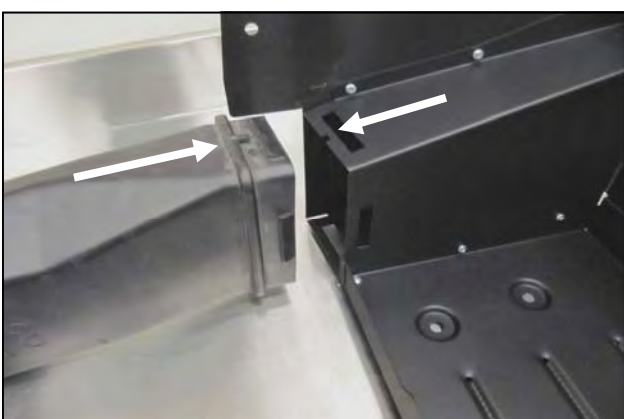
4. **A.)** Disconnect the air temp sensor.
B.) Remove the four bolts securing the air/battery box assembly to the vehicle. Remove the assembly and set aside. The bolts and air inlet will be reused.



5. Create the Cool Air Dam, or CAD assembly as shown using the Bottom Panel (#3), Side Panel (#4), and the 8-32 Thread Cutting Screws (#17). NOTE: Panel tabs are to be on the bottom of its mating panel.



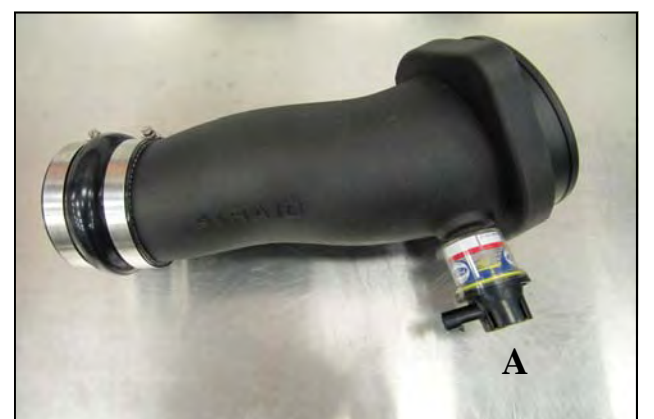
6. Transfer the air temp sensor from the factory airbox into the CAD assembly.



7. Transfer the air inlet from the factory airbox assembly into the CAD assembly. Note: the air inlet has an indexing tab that mates with a slot in the Panel slot.



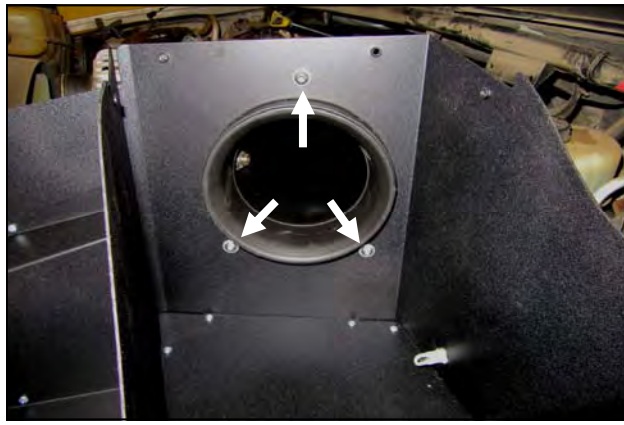
8. Place the CAD assembly in the engine compartment and start the four factory bolts from step 4. Leave the bolts loose for now.



9. Create the Tube assembly. **A.)** Transfer the factory grommet and filter minder into the Airaid Intake Tube (#2). **B.)** Slide the Hump Hose (#10) and Clamps (#13) onto the Tube as shown. Leave the clamps loose for now.



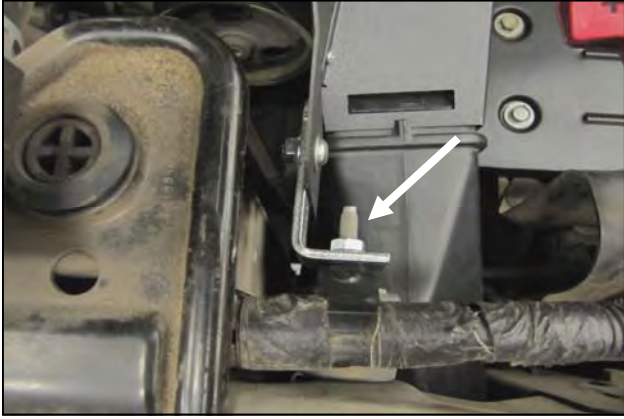
10. Insert the Airaid Intake Tube into the CAD assembly, then slide the Hump Hose onto the turbo inlet and tighten the Clamps. Reconnect the filter minder.



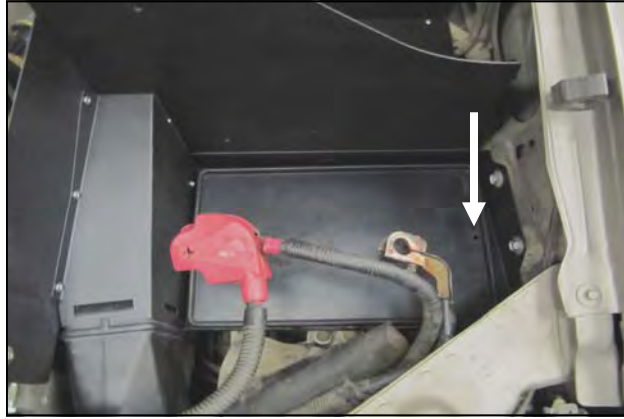
11. Secure the Intake Tube to the CAD assembly using three 1/4-20 Button Head bolts (#14) and 1/4" Flat Washers (#15). Tighten the factory bolts in the Panel assembly from step 8.



12. Vehicles equipped with a power distribution box mounted on the left inner fender, will remove the bolt from the factory bracket, slide in the bracket 140 (#12) and replace the factory bolt. If you don't have the distribution box, install the provided 1/4-20 button head bolt (#14), washer (#15), and nut (#16), through the inner fender, and tighten. Now tighten the button head bolt that holds the L-bracket to the panel.



13. Place the second bracket 140 (#12) onto the 6mm core support stud and secure using the 6mm flanged nut (#18). Attach the Bracket to the Panel using one 1/4-20 Button Head Bolt, 1/4" Flat Washer, and 1/4-20 Flange Nut.



14. Place the Battery Mat (#7) into the CAD assembly with drain tube on the Drivers side.



15. Secure the battery in place using the new 1/4-20 J Bolts(#11), Tie Down (#8) and 1/4-20 Flange nuts. The CAD Panels are slotted to accommodate the J Bolts.



16. Install The Airaid Premium Filter (#1).



17. Install the CAD Lid (#6) as shown and secure using four 1/4-20 Button Head Bolts and 1/4" Flat washers. Complete the Installation by attaching the Weather Strip (#9) to the CAD assembly edge surrounding the Filter.



18. **Double check your work!** Make sure there is no foreign material in the intake path. Make sure all clamps, hoses, bolts, and screws are tight. Double check the hood clearance. Reconnect the battery cables.

Before!

After!



Thank you for purchasing the Airaid Intake System. Contact Airaid @ (800) 498-6951 8:00 AM - 5:00 PM MST weekdays for questions regarding fit or instructions that are not clear to you. Your Airaid Intake System was carefully inspected and packaged. Check that no parts are missing, or were damaged during shipping. If any parts are missing, contact Airaid. The air filter element is protected from direct exposure to water and debris; care should be taken not to drive through deep water. WATER INGESTION IS THE DRIVERS RESPONSIBILITY!



Don't Forget Your AIRAID Filter Tune-Up Kit!

P/N 790-551 Aerosol Spray
P/N 790-550 Squeeze Spray

Rev.04/13/11

