



Installation Instructions
Part Number 450-181
2013-14 Ford Focus 2.0L
2013-14 Ford Focus ST 2.0T

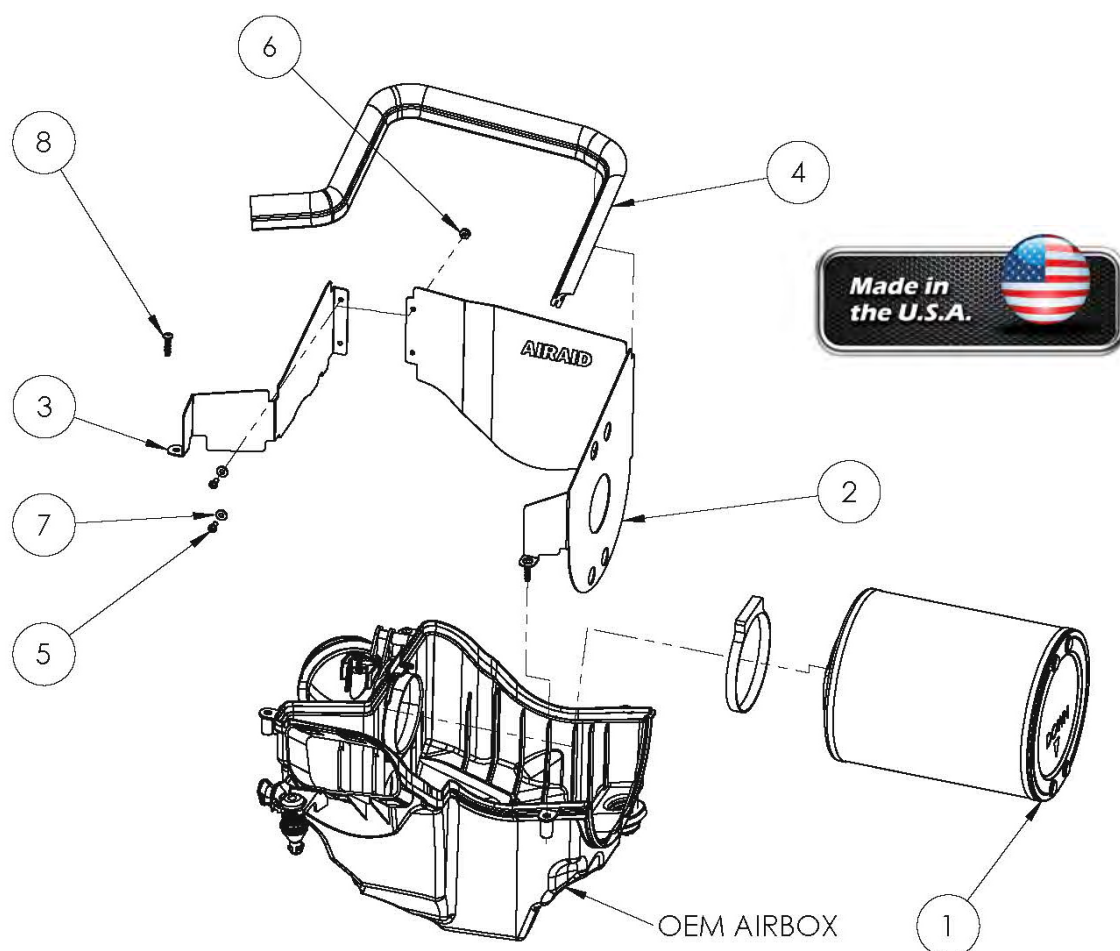
Packing List:

1	860-408	Airaid Premium Filter	1
2	KIT181RP C	Right Panel	1
3	KIT181LP C	Left Panel	1
4	KITWSTRIP02	Weather Strip 23in	1
	KIT181HP	Hardware and Instructions	
5	KIT6C31MXPPZ	#6-32 x 5/16 PH Screw	2
6	KIT6CNKEPZ	#6-32 Kep Nut	2
7	KIT6NWSAPZ	#6 Flat Washer	2
8	KIT10PPHL34SS	#10 Plastic Screw	4

NOTE: These instructions depict an installation being performed on a Focus ST and is meant to be a guide for all models listed. While some details may vary, the general install procedure remains the same.

Please read these installation instructions in their entirety before beginning the install process.

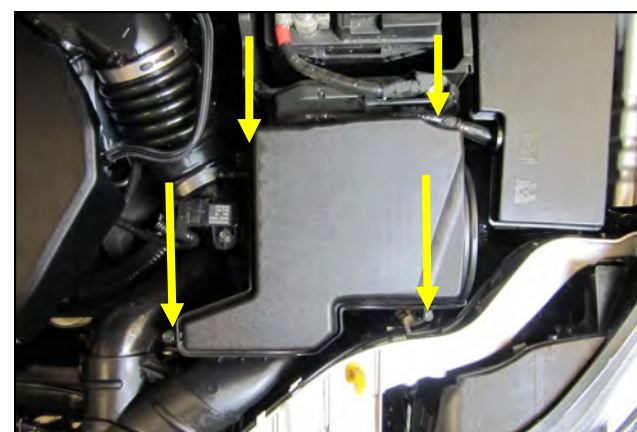
Full color instructions can be viewed on our web site at [Airaid.com](http://www.airaid.com). Use the **Product Search** function to find your part number, and click **View Details** or go to <http://www.airaid.com/InstallationPDF/450-181.pdf>



1. NOTE: Airaid recommends allowing sufficient time for a complete engine cool down before performing this installation.



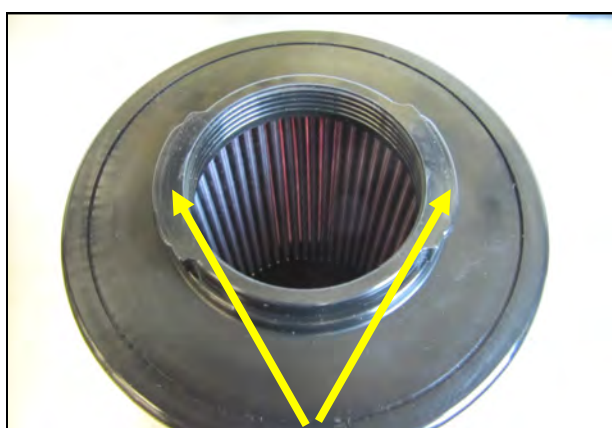
2. Locate battery cover and remove it. Disconnect the Negative terminal.



3. Remove the four airbox screws and the airbox lid.



4. Notice how the OEM filter is installed in the air box. Remove the factory air filter and examine the mounting tube inside the air box.



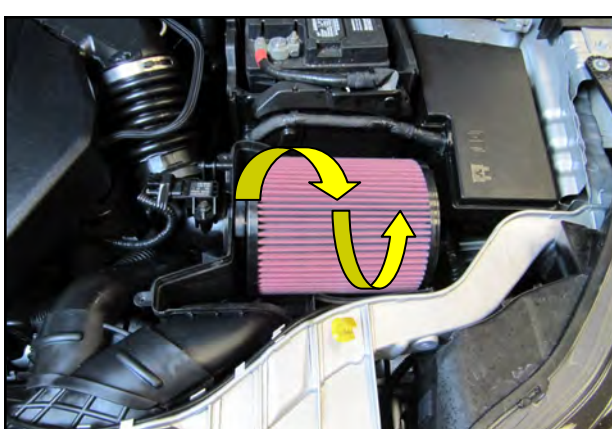
5. Notice that the Airaid Filter is designed to mate perfectly with the features on the air box mounting tube.



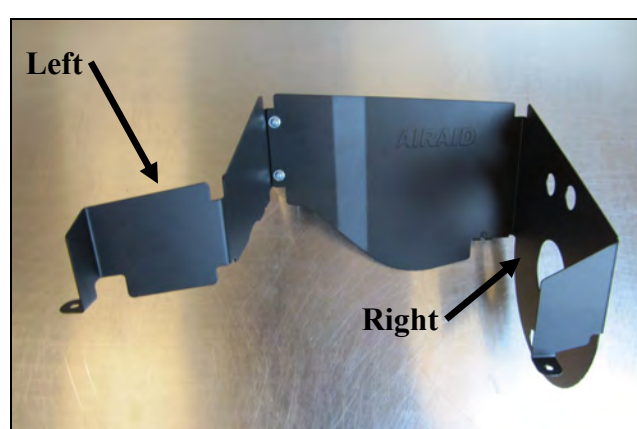
6. Notice that the Airaid Filter top has a directional arrow in the center and locating lugs in the 12:00 and 6:00 positions.



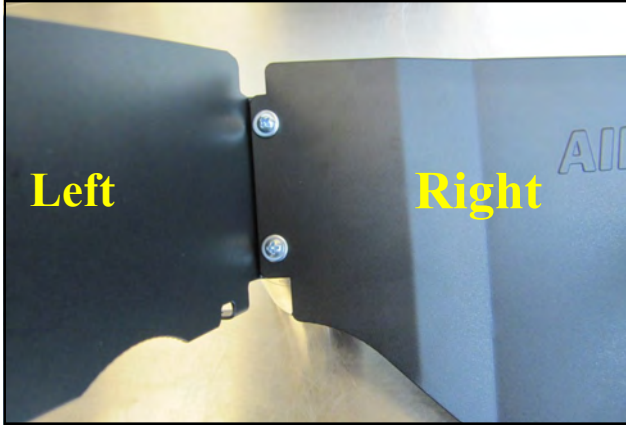
7. Install The Airaid Premium Filter (#1) and clamp into the air box as shown, with the Arrow pointing Down and the Lugs in the correct position. When properly installed, the Filter top will be completely inside of the airbox lower half.



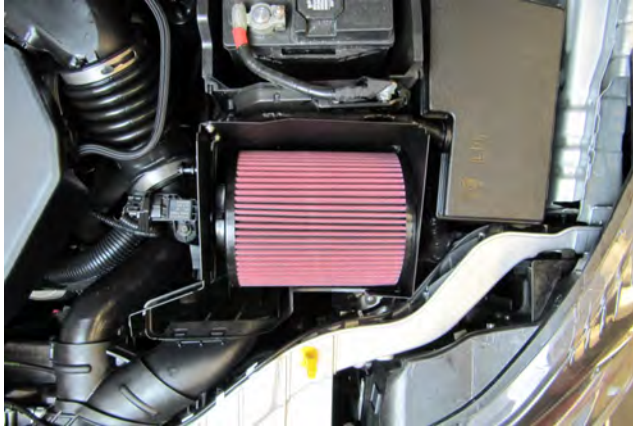
8. Rotate the Filter forwards and backwards a few degrees to ensure it has positively engaged the mounting tube. Do not tighten the clamp at this time.



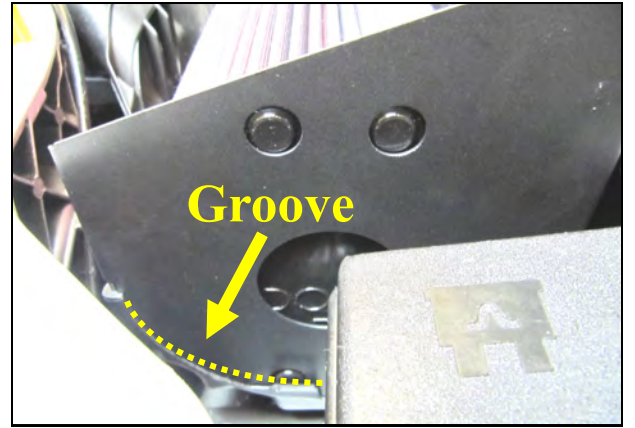
9. Create the Panel assembly as shown using the Right and Left panels (#2&3) and the set of 6-32 Screws, Nuts, and washers (#'s 5, 6 & 7).



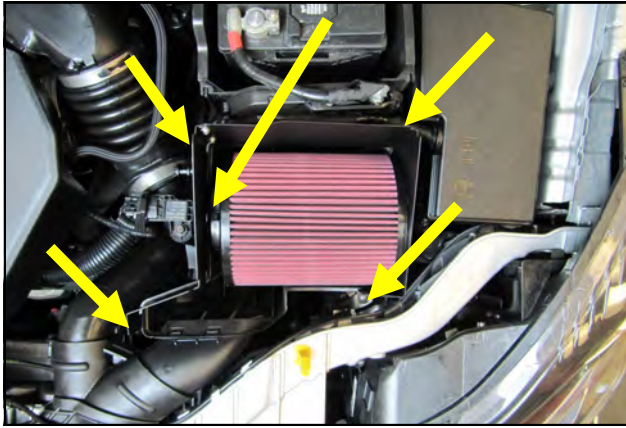
10. Note: When properly installed the Tab of the Left Panel is behind the Right Panel.



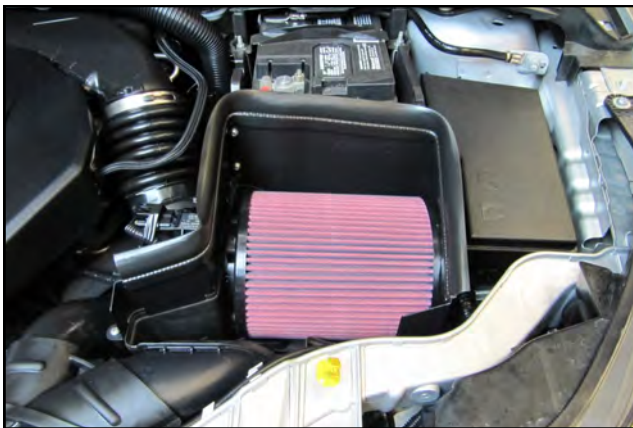
11. Set the Panel assembly into the factory air box .



12. When properly installed, the panel will reside inside the groove in the air box and both sets of locating lugs will positively engage the holes in the Panel.



13. Secure the panel assembly to the airbox using the four # 10 Plastic Screws (#8). Hint: A magnetic tipped #2 Phillips head screwdriver works best. Tighten the Air Filter clamp at this time.



14. Install the Weather Strip (#4) onto the Panel assembly with the contour rolling away from the Air Filter.



15. Re connect the battery terminal and reinstall the cover.

Double check your work!

Make sure there is no foreign material in the intake path. Make sure all clamps, hoses, bolts, and screws are tight. Double check the hood clearance!

Thank you for purchasing the Airaid Intake System. Contact Airaid @ (800) 498-6951 8:00 AM - 5:00 PM MST weekdays for questions regarding fit or instructions that are not clear to you. Your Airaid Intake System was carefully inspected and packaged. Check that no parts are missing, or were damaged during shipping. If any parts are missing, contact Airaid. The air filter element is protected from direct exposure to water and debris; care should be taken not to drive through deep water. WATER INGESTION IS THE DRIVERS RESPONSIBILITY! The air filter is reusable and should be cleaned periodically.

Before!

After!



Don't Forget Your AIRAID Filter Tune-Up Kit!

P/N 790-551 Aerosol Spray
P/N 790-550 Squeeze Spray



Instructions Revision
Date: 10.10.13