



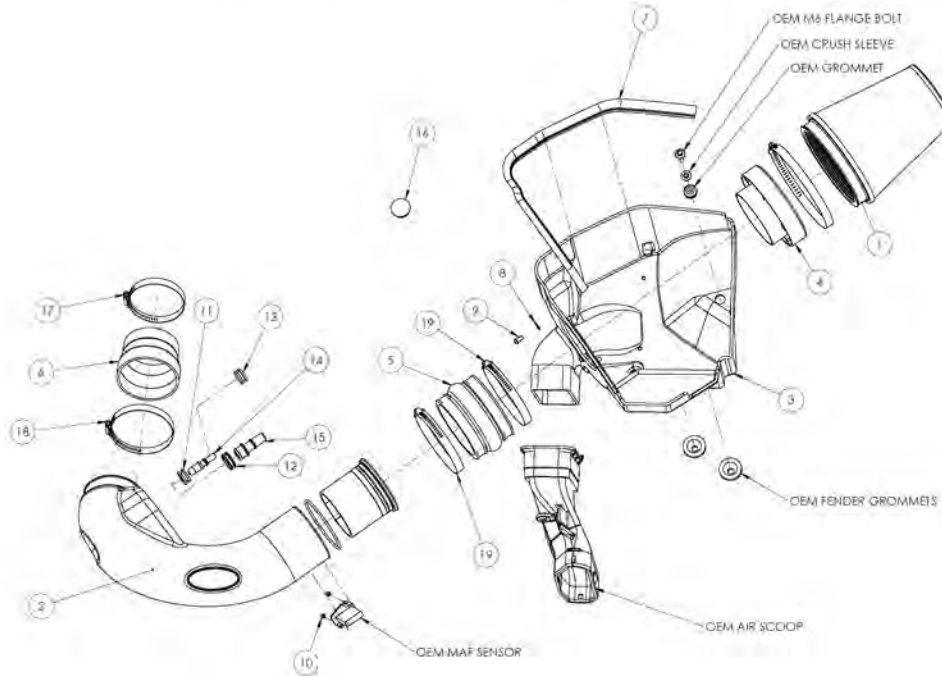
# Installation Instructions

## Part Number 450-264C

### 2011-14 Ford Mustang GT

### 5.0L V-8

## INTAKE SYSTEMS



### Packing List:

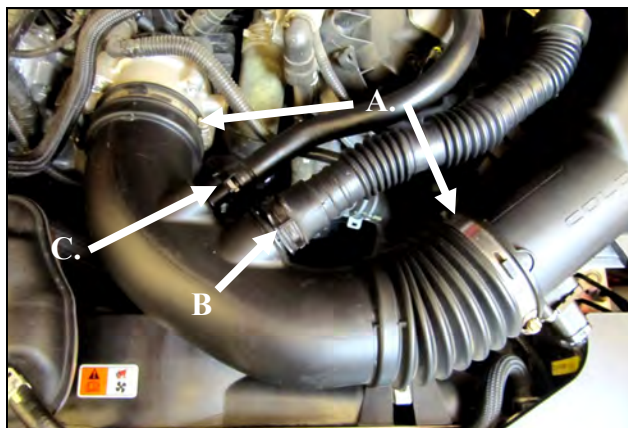
#1	700-461	Airaid Premium Filter	1
#2	KIT264TCA	Airaid Intake Tube Assembly	1
#3	KIT238CAD	Cool Air Box	1
#4	KIT1121MAFADA	Filter Adapter	1
#5	KITHUMPHS13	Silicone Hump Hose	1
#6	KITRDCR18	Silicone Coupler	1
#7	KITWSTRIP03	Weather Strip 25"	1
	KIT264CHP	Hardware & Instructions	1
#8	-KIT09FWZ019	1/4" Flat Washer	x3
#9	-KIT15DHC3050	1/4-20 x 1/2" Button Head Cap Screw	x3
#10	-KIT15BHC3038	8-32 x 3/8" Button Head Cap Screw	x2
#11	-KITGRMT03	3/8" Grommet	x1
#12	-KITGRMT10	5/8" Grommet	x1
#13	-KITGRMT17	Blind Grommet	x1
#14	-KITFITTING05	3/8" Aluminum Fitting	x1
#15	-KITFITTING15	5/8" Aluminum Fitting	x1
#16	-KITPLUG01	Firewall Plug	x1
#17	-KITHS56	#56 Hose Clamp	x1
#18	-KITHS64	#64 Hose Clamp	x3
#19	-KITBIT01	T-20 Torx Bit	x1

**INSTALL NOTE:** If you are installing this kit on a vehicle equipped with a Power Dome Hood with Heat Extractors we suggest the use of our optional AIRAID pre-filter (Part #799-469) to give an added layer of protection from the elements.

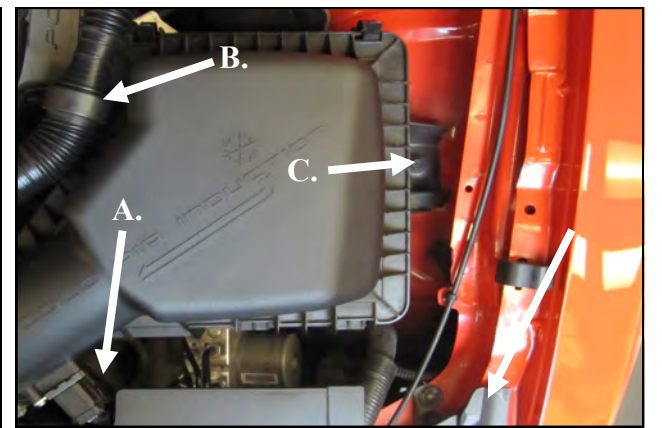


#### Disconnect The Negative Battery Terminal!

1. If so equipped, remove the strut tower brace, then remove the engine cover by simply lifting it up, and set aside.



2. A) Loosen the hose clamps on the factory intake tube B) Squeeze the spring clamp and disconnect the resonator from the air intake tube. C) Carefully depress the hose lock tab, and disconnect the crank case breather line and the brake aspirator line if equipped, (AT models only). D) Remove the factory intake tube.



3. A) Disconnect the wiring harness from the Mass Air Flow sensor (MAF). Carefully pry the harness anchor from the air box using a screwdriver. B) Separate the resonator tube from the Air box lid. C) Using a 10mm socket, remove the bolt securing the air box to the inner fender and remove the air box assembly. This bolt will be reused in step 10.



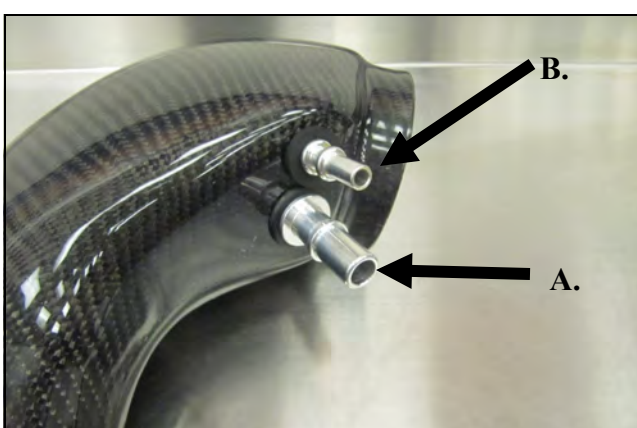
4. Remove the resonator assembly from the vehicle.  
A. Slide the hanger off of the strut tower tab.  
B. Remove the 6mm bolt securing the diaphragm body to the inner fender.  
Slide the resonator tubing out of the firewall and set the assembly aside. It will not be reused.



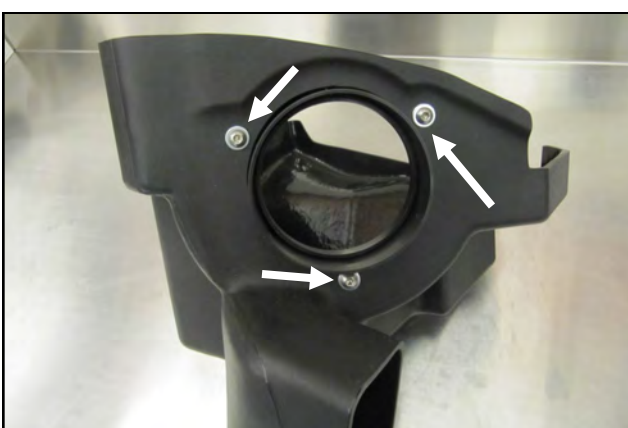
5. Insert the Fire Wall Plug (#16) into the resonator hole.



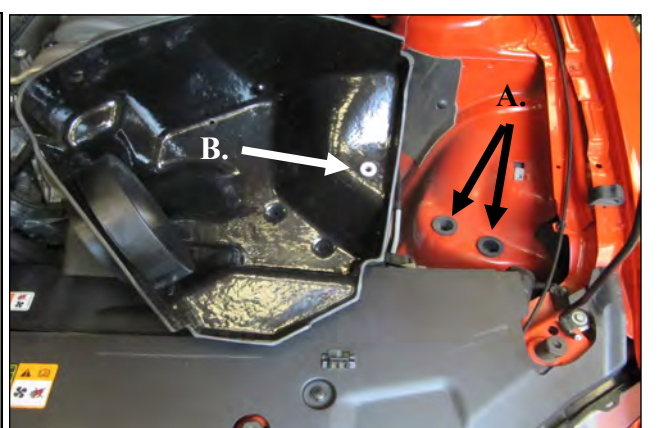
6. Using the supplied Torx bit, (#19) remove the MAF sensor from the factory airbox and transfer it into the Airaid Tube assembly (#2).  
Install the MAF sensor using two provided 8-32x3/8" screws (#10).  
**Do Not Use The Factory Screws!**



7. Install the Grommets and Fittings into the Airaid Intake Tube (#2): A) All models will require the use of the 5/8" Fitting (#15) and the 5/8" Grommet (#12). B) Automatic transmission equipped vehicles will also use the 3/8" Fitting (#14) and 3/8" Grommet (#11). Manual transmission vehicles will not need the 3/8" components and will use the Blind Grommet (#13)



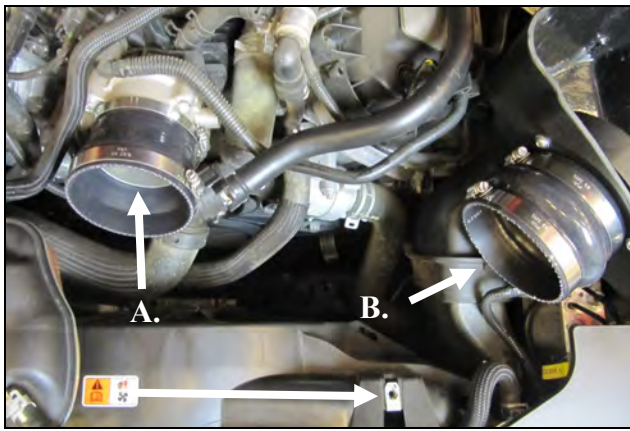
8. Install the filter adapter (#4) using three 1/4-20 button head bolts (#9), and Fat Washers (#8) into the Airaid Cool Air Box (CAB) (#3) as shown.



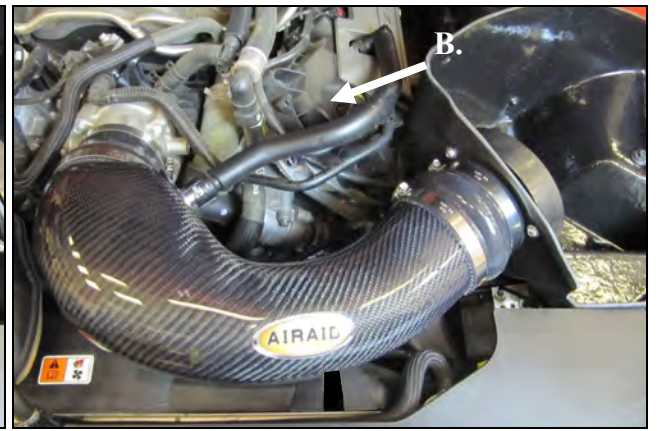
9. Transfer the factory air box mounting grommets. A) Locate and remove the Two Lower air box mounting grommets, and install them in the inner fender. B) Remove the Upper air box mounting grommet and steel sleeve, and re-install into the Airaid CAB.



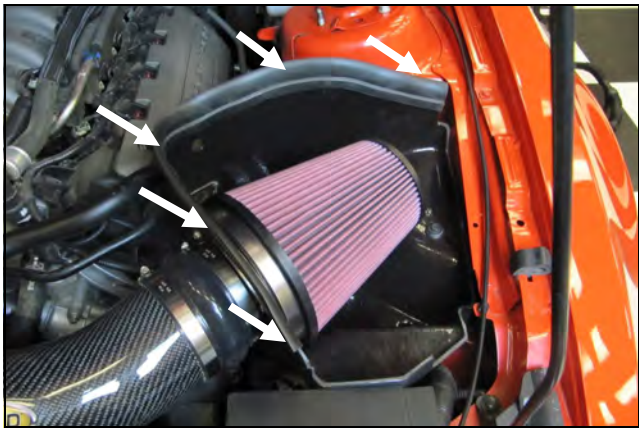
**10.** Install the CAB into the vehicle. Make sure that the Air inlet of the CAB aligns with the factory duct, and the two locating pins on the bottom align with the factory grommets. Next reinstall the factory bolt that was removed in step #3 through the steel sleeve and grommet and into the inner fender.



**11.** Install the Coupler and Hump Hose and Clamps: **A.** Install the Silicone Coupler (#6) and Hose clamps onto the throttle body. Place the #56 clamp (#15) on the Throttle body side of the reducer, and the #64 clamp (#18) on to the open end. **B.** Install the Hump Hose (#5) onto the Filter Adapter along with two #64 hose clamps as shown. Leave the Clamps loose for now. Remove the Clamp nut from the fan shroud.



**12.** Install the Airaid Intake Tube into the couplers as shown, and tighten all Hose clamps. Reconnect the breather line/lines to the Aluminum Fittings depending on your application. Reconnect the Mass Air Flow sensor, which is now located in the lower back side of the intake. Slide the locking tab back into the connector



**13.** Install the Airaid Premium Filter (#1) onto the Filter Adapter and tighten the hose clamp. Install the Weather Strip (#7) onto the CAB with the contoured edge going away from the filter. Start at the front of the vehicle and work your way back.



**14.** Replace the engine cover and shock tower brace.

**15. Double check your work!**

Make sure there is no foreign material in the intake path. Make sure all clamps, hoses, bolts, and screws are tight. Double check the hood clearance. **It is Very important to verify that the Intake Tube is not rubbing on the fan shroud or the hood.**

**Reconnect the negative battery cable.**

Full color instructions can be viewed on our web site at **Airaid.com**. Use the **Product Search** function to find your part number, and click **View Details** or go to <http://www.airaid.com/InstallationPDF/450-264C.pdf>

Thank you for purchasing the Airaid Intake System. Contact Airaid @ (800) 498-6951 8:00 AM - 5:00 PM MST weekdays for questions regarding fit or instructions that are not clear to you. Your Airaid Intake System was carefully inspected and packaged. Check that no parts are missing, or were damaged during shipping. If any parts are missing, contact Airaid. The air filter element is protected from direct exposure to water and debris; care should be taken not to drive through deep water. **WATER INGESTION IS THE DRIVERS RESPONSIBILITY!** The air filter is reusable and should be cleaned using the Airaid Filter Tune-Up Kit periodically.

**Before!**



**After!**



**Don't Forget Your AIRAID Filter Tune-Up Kit!**

P/N 790-551 Aerosol Spray  
P/N 790-550 Squeeze Spray



Instructions Revision  
Date: 03.01.13