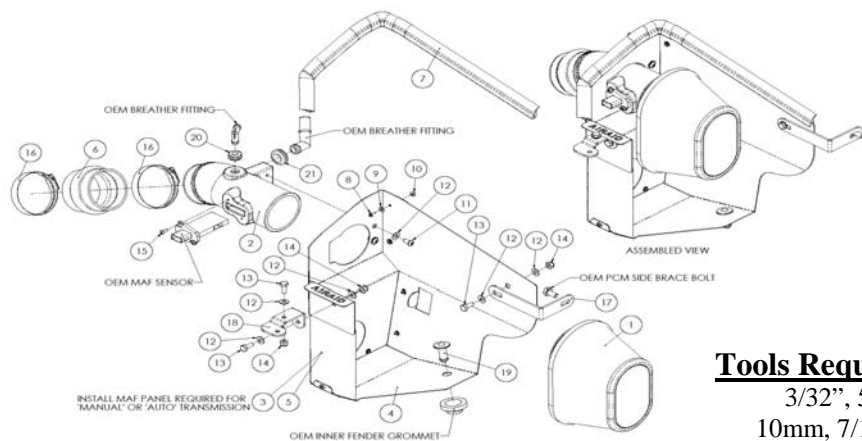




INTAKE SYSTEMS



Tools Required For Installation:

3/32", 5/32" Allen Wrenches
 10mm, 7/16", 5/16", 1/4" Sockets
 7/16" Wrench
 Ratchet & Extension
 Phillips Screwdriver
 #20 Torx Bit (Provided)

Installation Instructions

Part Number 451-234

2008-09 Ford Focus 2.0L I-4

Non PZEV Vehicles

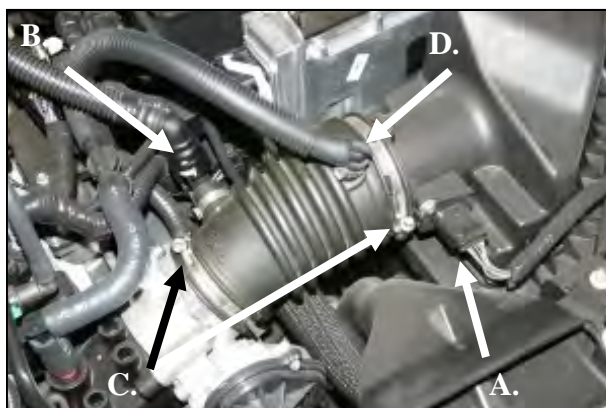
Packing List:

#1	721-448	Airaid Premium Filter	1
#2	KIT291T	Airaid Intake Tube	1
#3	KIT291MAFC	MAF Panel (Auto Trans)	1
#4	KIT291BPC	Bottom Panel	1
#5	KIT2911MAFC	MAF Panel (Manual)	1
#6	KITHUMPHS23	Hump Hose	1
#7	KITWSTRIP04	Weather Strip 22"	1
	KIT234HPS	Hardware & Instructions	1
#8	KIT6C31MXPPZ	6-32x5/16" Phillips Screw	7
#9	KIT6NWSAPZ	#6 Flat Washer	7
#10	KIT6CNKEPZ	6-32 Keps Nut	7
#11	KIT15DHC3050	1/4"-20 Button Head Bolt	2
#12	KIT09FWZ019	1/4" Flat Washer	7
#13	KIT25C62HCSS	1/4"-20x5/8" Hex Bolt	3
#14	KIT25CNNES	1/4"-20 Lock Nut	3
#15	KIT15BHC3038	8-32 x 3/8" Button Head Screw	2
#16	KITHS44	#44 Hose Clamp	2
#17	KIT203B	Side Bracket	1
#18	KIT291B	Front Bracket	1
#19	KIT131RIVET	Billet Rivet	1
#20	KITGRMT13	Small Grommet	1
#21	KITGRMT16	Large Grommet	1
	KITBIT#01	T20 Torx Bit	1

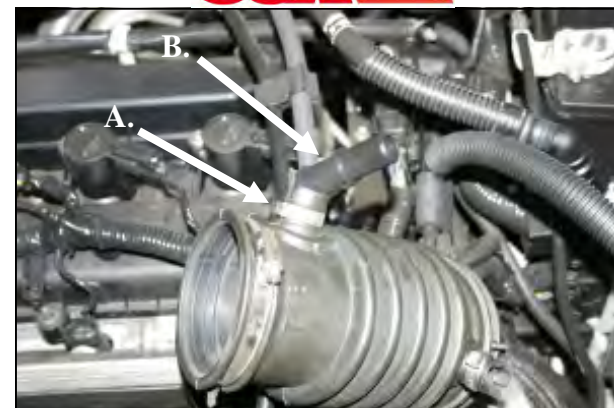


1. Disconnect the negative battery cable!

Remove the three bolts that secure the intake scoop to the radiator support. The two long bolts will be reused in step #14.



2. A.) Pull the red tab on the bottom, and then squeeze the Mass Air Flow sensor wiring connector and disconnect it from the sensor. B.) Push the tab, and disconnect the breather hose from the plastic elbow. C.) Loosen the two factory clamps on the flexible intake tube. D.) Remove the Oetiker clamp, and then carefully remove the small plastic elbow from the flexible intake tube leaving the breather hose connected to the elbow.



3. Remove the factory flexible intake tube from the vehicle. Remove the Oetiker clamp, and then remove the large plastic elbow from the flexible intake tube. It will be reused in step #12.



4. Pull straight up, and remove the airbox assembly from the vehicle. It is only held in by one grommet at this point.



5. Remove the scoop from the factory airbox. Next, using the supplied #20 Torx bit, remove the Mass Air Flow sensor from the airbox lid. These parts will be re-installed in steps #10 & 13.



6. Remove one bolt that secures the brace to the inner fender. It will be reinstalled in step #15.



7. Install the supplied hump hose (#6), and two #44 hose clamps (#16) onto the throttlebody as shown. Tighten only the clamp on the throttlebody.

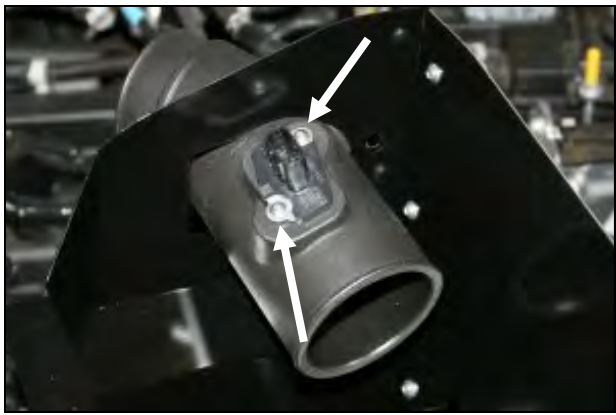


8. Install the small grommet (#20) into the hole on the top of the Airaid intake tube (#2). Now install the large grommet (#21) into the hole on the side of the tube.

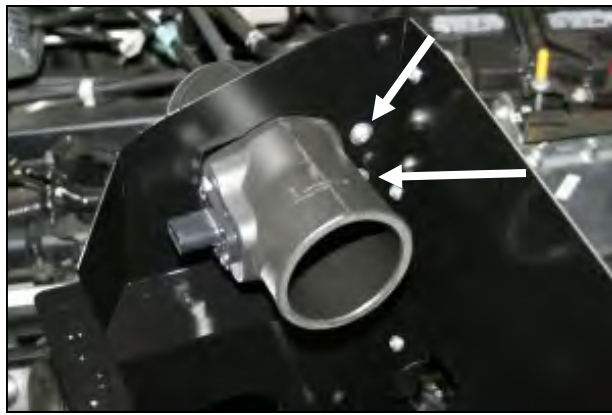


9. **Auto Transmission vehicle only:** Assemble the two Cool Air Dam panels (#3 & #4) using 7 screws (#8), washers (#9), and nuts (#10) as shown. Make sure that the bent flanges where the panels screw together, are on the outside of the box. **Note: Use panel #3 with tag marked "AUTO".**

Manual Transmission vehicle only: Assemble the two Cool Air Dam panels (#4 & #5) using 7 screws (#8), washers (#9), and nuts (#10) as shown. Make sure that the bent flanges where the panels screw together, are on the outside of the box. **Note: Use panel #5 with tag marked "Manual".**



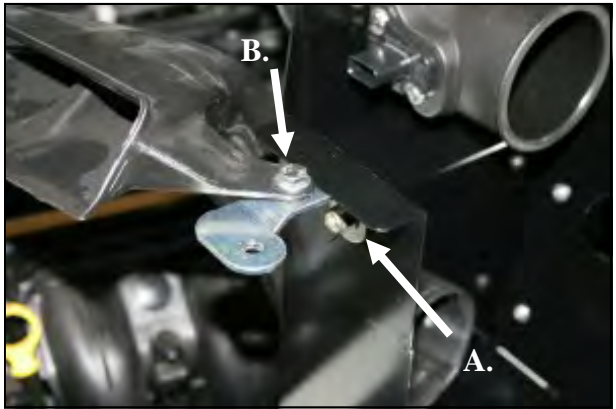
10. Insert the Airaid intake tube thru the CAD panel and then reinstall the Mass Air Flow sensor from step #5 using the two supplied 8-32x3/8" button head screws (#15). **Do Not Use The Factory Screws!**



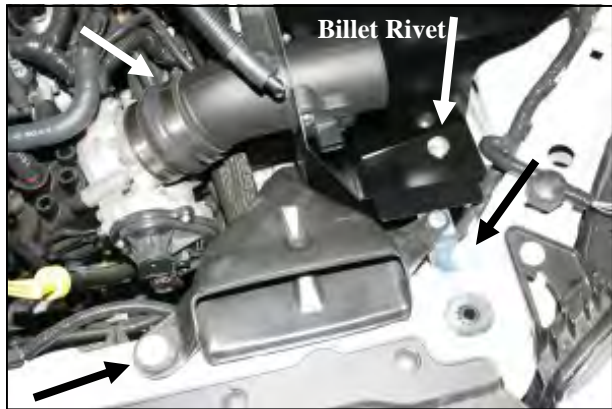
11. Now turn the intake tube counterclockwise until the mounting holes align thru the panel. Secure the tube to the panel using the two 1/4"-20 button head bolts (#10) and 1/4" washers (#11).



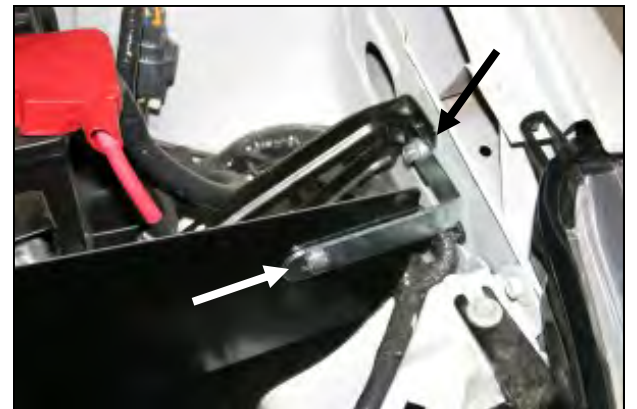
12. Insert the factory elbow removed in step #3 into the large grommet on the side of the intake tube as shown. A drop or two of dish soap or something similar will help make the elbow slide thru the grommet easier.



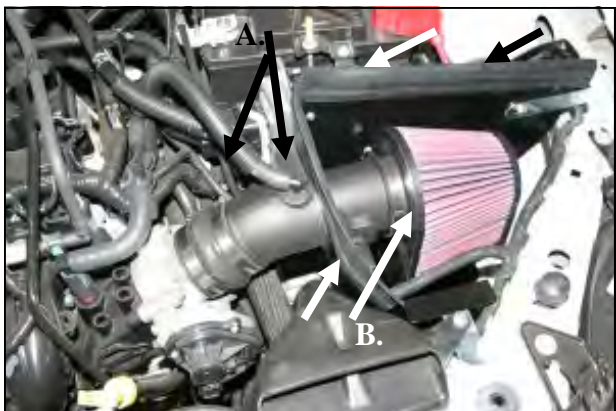
13. A.) Install the front bracket (#18) onto the front of the CAD as shown using one 1/4"-20x5/8" hex bolt (#13), two 1/4" flat washers (#12), and one lock nut (#14). B.) Next mount the factory scoop to the bracket as shown using one 1/4"-20x5/8" hex bolt (#13), two 1/4" flat washers (#12), and one lock nut (#14).



14. Install the CAD into the vehicle making sure to slip the intake tube into the hump hose as you lower the assembly into place. After you have the intake tube correctly located into the hump hose, insert the billet rivet (#19) thru the CAD and into the factory grommet in the inner fender well. Tighten the hose clamp on the hump hose and then reinstall the two factory bolts removed in step #1 that secure the scoop to the radiator support. Reconnect the Mass Air Flow sensor!



15. Install the side bracket (#17) onto the CAD as shown using the factory bolt removed in step #6, and one 1/4"-20x5/16 hex bolt (#13), two 1/4" flat washers (#12), and one lock nut (#14).



16. A.) Reinstall the small breather hose into the grommet on the top of the intake tube. Reconnect the large breather connector to the factory elbow. B.) Next mount the Airaid Premium Filter (#1) onto the intake tube as shown and tighten the clamp. C.) Install the weatherstrip (#6) onto the top of the CAD panels as shown. Start at the front of the vehicle and work your way towards the fender.

17. **Double check your work!** Make sure there is no foreign material in the intake path. Make sure all clamps, hoses, connectors, bolts, and screws are tight. Periodically check the tightness of all hose clamps.

18. **Re-connect the negative battery cable!**

Before!



After!



Thank you for purchasing the Airaid Intake System. Contact Airaid @ (800) 498-6951 8:00 AM - 5:00 PM MST weekdays for questions regarding fit or instructions that are not clear to you. Your Airaid Intake System was carefully inspected and packaged. Check that no parts are missing, or were damaged during shipping. If any parts are missing, contact Airaid. The air filter element is protected from direct exposure to water and debris; care should be taken not to drive through deep water. WATER INGESTION IS THE DRIVERS RESPONSIBILITY!

SynthaMax

Do Not Oil



Synthamax Air Filters do not require oil. Service air filter as needed by cleaning with common non-petroleum all-purpose household cleaner and water. Simple Green®, Formula 409® or equivalent works great. Apply cleaner to outside of air filter and allow to soak. Then flush filter clean from the inside out with a garden hose and repeat steps if necessary. Do not apply high pressure water or air to clean filter. Allow filter to air dry and reinstall.