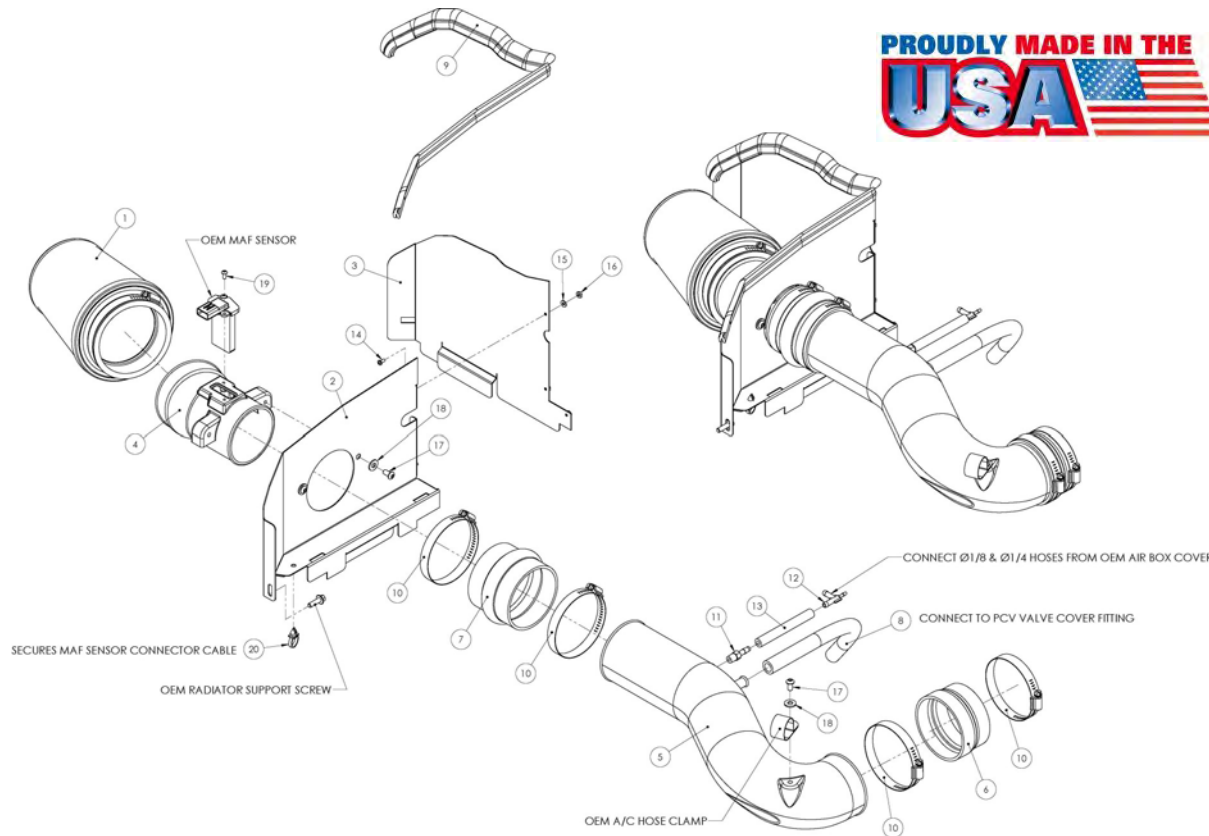


AIR AID[®]

INTAKE SYSTEMS



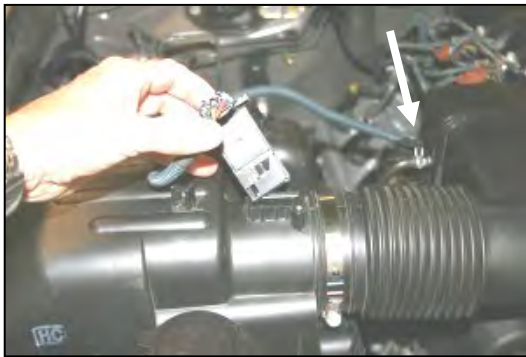
Installation Instructions
Part Number 510-173
2005-06 Toyota Tundra
2005-07 Toyota Sequoia
4.7L V-8

Packing List:

#1	700-458	Airaid Premium Filter	1
#2	KIT181MAFPC	MAF Panel	1
#3	KIT181BPC	Back Panel	1
#4	KIT181A	MAF Adapter	1
#5	KIT981T	MIT Intake Tube	1
#6	KITRDCR04	3 1/2" to 3 3/8" x 2 Reducer	1
#7	KITHUMP03	3 1/2" x 3" Hump Hose	1
#8	KITHOSE01	1/2" x 13" Hose	1
#9	KITWSTRIP02	Weather Strip 22"	1
	KIT173HP	Hardware & Instructions	1
#10	KITHS52	#52 Hose Clamp	4
#11	KITFITTING10	1/4" Barbx1/8"NPT	1
#12	KITFITTING11	1/4"x1/4"x1/8" Vacuum Tee	1
#13	KITHHOSE03	1/4" IDx4" Hose	1
#14	KIT6C31MXPPZ	6-32x5/16" Screw	3
#15	KIT6NWSAPZ	#6 Flat Washer	3
#16	KIT6CNKEPZ	6-32 Keps Nut	3
#17	KIT15DHC3050	1/4" x 20 Button Head Bolt	3
#18	KIT09FWZ019	1/4" Flat Washer	3
#19	KIT10BHCP38	8-32 Button Head Bolt	2
#20	KIT131MOUNT	Hose Mount	1

Tools Required For Installation:

5/32" Allen Wrench & 3/32" Allen Wrench
 5/16" Socket & 10mm Socket
 Ratchet & Extension
 Phillips Screwdriver
 7/16" Wrench

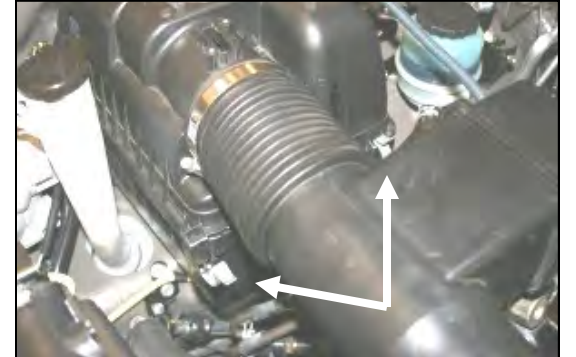


1. Stage I

Disconnect negative battery cable.
 Remove 2 screws and remove and set aside the Mass Air Flow sensor from the factory airbox. Unclip wire harness from intake tube. (See arrow)



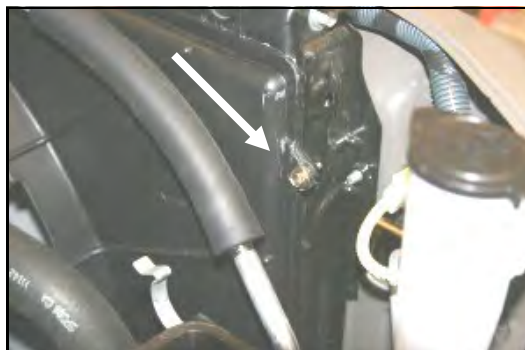
2. Loosen hose clamp where intake tube connects to the airbox.



3. Unlatch 4 clips on factory airbox



4. Remove factory airbox lid, and filter.



5. Remove fan shroud bolt on passenger side of radiator, save for later use.



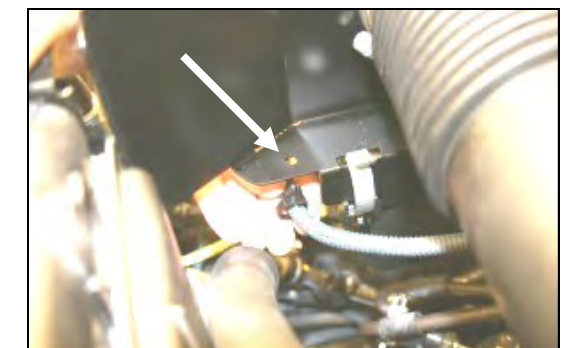
6. Assemble Cool Air Dam (#2) & (#3) using three screws (#14), washers (#15), and nuts (#16). Install MAF adapter (#4) using two button head bolts (#17), and washers (#18), as shown.



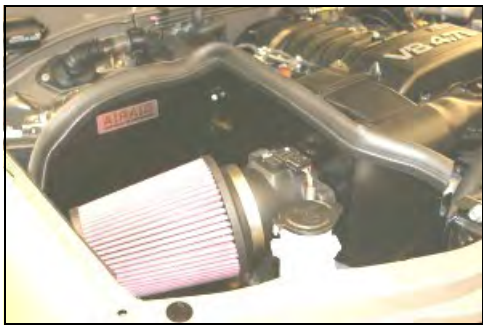
7. Slip MAF adapter into factory intake tube while installing CAD onto top of factory airbox. Adjust for fit, and latch 3 factory clips on factory airbox. Tighten the hose clamp on the intake tube. Replace the fan shroud bolt that was removed in step #5.



8. Re-route MAF wire harness under the intake tube, and around the front of the airbox. Install MAF sensor into the MAF adapter, using two supplied button head screws (#19). **DO NOT USE FACTORY SCREWS!**



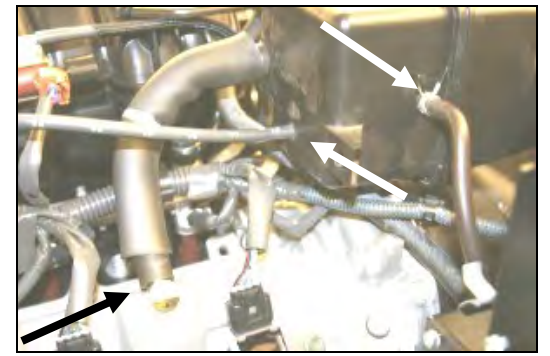
9. Slip hose mount (#20) over MAF wire harness, and into hole in bottom of CAD. This will keep the harness from chafing.



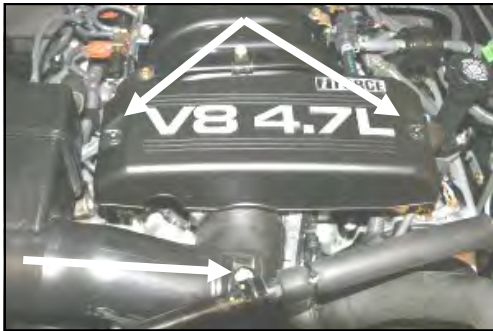
10. Install the Airaid Premium Filter (#1) on the MAF adapter. Next install the weather strip (#9) on the CAD as shown. Start at the front, next to the radiator, and work your way towards the back.

11. Stage II

For maximum airflow and aggressive sound from your vehicle, proceed with installing the Airaid Modular Intake Tube (#5). The MIT can be added or taken off of the vehicle at any time depending on your preference. If you choose not to install the MIT, skip to step #19 below.



12. Disconnect breather hose from valve cover. Disconnect 1/8" vacuum line, and 1/4" vacuum line from the back of the factory intake tube.



13. Remove two 10mm nuts, and the beauty cover from the top of the engine. Remove one bolt thru the Adel clamp that holds the air conditioning hose to the intake tube. Loosen hose clamps on each end of the factory intake tube.



14. Remove the factory intake tube.



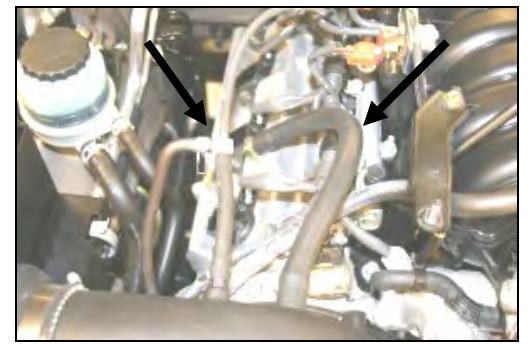
15. Install the hump hose (#7) on the MAF adapter (#4) with two hose clamps (#10). Install the reducer (#6), small end first, onto the throttle body with two hose clamps (#10). Leave the clamps loose for now.



16. Install the barbed fitting (#11) into the MIT as shown, and then slide the 1/4"x4" hose (#13) over the fitting.



17. Install the MIT (#5) into the hump hose (#7), and then into the reducer (#6). Adjust the MIT snugly against the throttle body, and tighten all 4 hose clamps. Install the supplied button head bolt (#17), and washer (#18), thru the Adel clamp and into the MIT to hold the air conditioning hose.



18. Install the vacuum tee (#12) into the 1/4"x4" hose (#13), and reconnect the factory 1/4" and 1/8" vacuum lines to the tee as shown. Install the 1/2"x13" breather hose (#8) onto the valve cover and to the MIT as shown.

19. Double check your work!

Make sure there is no foreign material in the intake path. Make sure all clamps, hoses, bolts, and screws are tight.

20. Reconnect the negative battery cable!

Thank you for purchasing the Airaid Intake System. Contact Airaid @ (800) 498-6951 8:00 AM - 5:00 PM MST weekdays for questions regarding fit or instructions that are not clear to you. Your Airaid Intake System was carefully inspected and packaged. Check that no parts are missing, or were damaged during shipping. If any parts are missing, contact Airaid. The air filter element is protected from direct exposure to water and debris; care should be taken not to drive through deep water. WATER INGESTION IS THE DRIVERS RESPONSIBILITY! The air filter is reusable and should be cleaned using the Airaid Filter Tune-Up Kit periodically.

Don't Forget Your AIRAID Filter Tune-Up Kit!



P/N 790-551 Aerosol Spray
P/N 790-550 Squeeze Spray

Instructions Revision
Date: 04.29.13

Before!



After!

