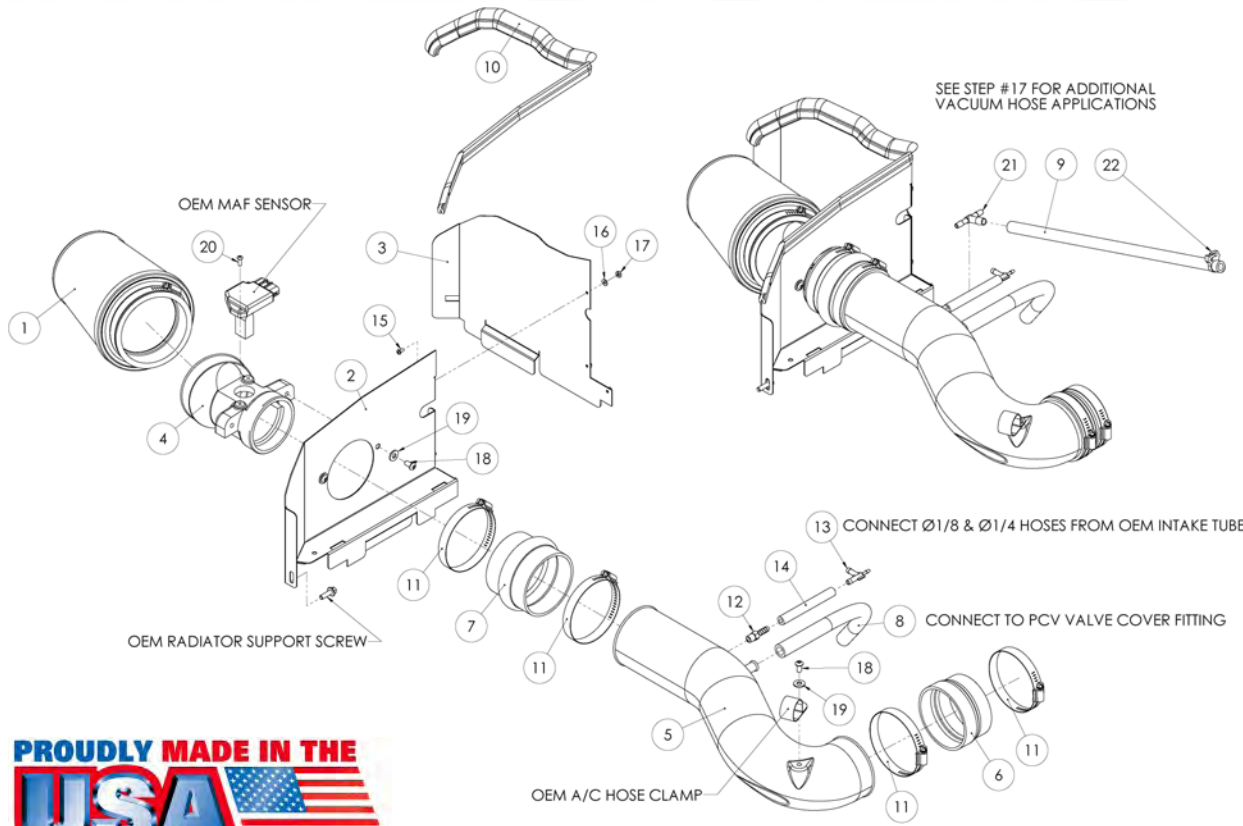


AIR AID®

INTAKE SYSTEMS

Installation Instructions
Part Number 511-163
2000-04 Toyota Tundra
2001-04 Toyota Sequoia
4.7L V-8

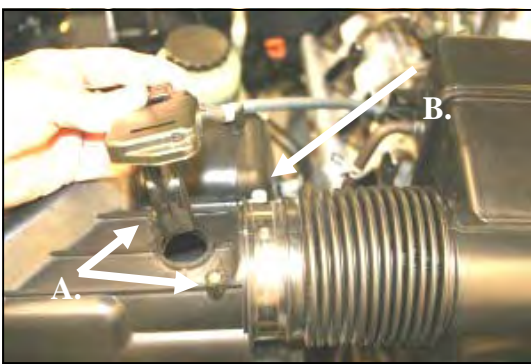


Packing List:

#1	701-458	Airaid Premium Filter	1
#2	KIT181MAFPC	MAF Panel	1
#3	KIT181BPC	Back Panel	1
#4	KIT161A	MAF Adapter	1
#5	KIT981T	Intake Tube	1
#6	KITRDCR04	Reducer Coupler	1
#7	KITHUMPS11	Hump Hose	1
#8	KITHOSE01	1/2"x13" Breather Hose	1
#9	KITHOSE06	3/8" x 17" Hose	1
#10	KITWSTRIP02	Weather Strip 26 3/4"	1
	KIT163HPS	Hardware & Instructions	1
#11	KITHS52	#52 Hose Clamp	4
#12	KITFITTING10	1/4"Barbx1/8"NPT	1
#13	KITFITTING11	1/4"X1/4"X1/8" Vacuum Tee	1
#14	KITHOSE03	1/4"X4" Hose	1
#15	KIT6C31MXPPZ	6-32x5/16" Screw	3
#16	KIT6NWSAPZ	#6 Flat Washer	3
#17	KIT6CNKEPZ	6-32 Keps Nut	3
#18	KIT15DHC3050	1/4"x20 Button Head Bolt	3
#19	KIT09FWZ019	1/4" Flat Washer	3
#20	KIT15BHC3050SS	8-32X1/2" Button Head Bolt	2
#21	KITFITTING13	1/4" x 1/4" x 3/8" Tee	1
#22	KITSNP14M4	Speed Clamp	1

Tools Required For Installation:

3/32" & 5/32" Allen Wrench
 5/16", & 10mm Socket
 Ratchet & Extension
 Phillips Screwdriver
 7/16" Wrench



1. Stage I

Disconnect the negative battery cable!

A) Remove two screws, and remove Mass Air Flow sensor from factory airbox. Leave wire harness connected, and set aside. B) Loosen hose clamp on intake tube



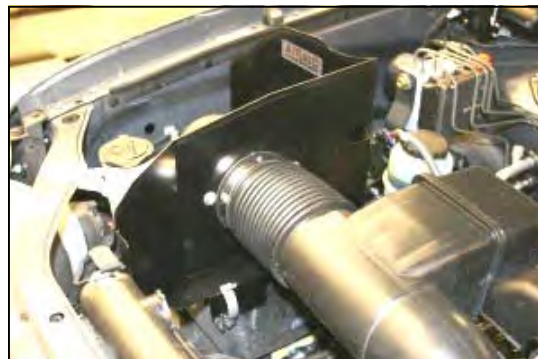
2. Unlatch the 4 clips on the factory airbox, and remove the lid. Remove the factory air filter.



3. Assemble the Cool Air Dam (#2) & (#3) as shown using three screws (#14), washers (#15), and nuts (#16). Install the MAF adapter (#4), and two button head bolts (#17), and washers (#18), as shown.



4. Remove fan shroud bolt from passenger side of radiator. (Save for later use).



5. Slide the MAF adapter into the factory tube, and at the same time slip the CAD onto the top of the factory airbox base, adjust for fit and re-latch the 3 factory clips. Tighten the hose clamp on the factory intake tube. Reinstall the shroud bolt from step #4.



6. Remove the top screw on the CAD. Spread the panels slightly, and slip the wire harness thru the gap into the access hole, as shown. Re-install the screw and tighten.



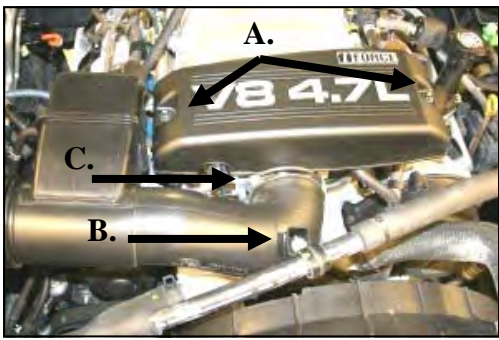
7. Install the MAF sensor into the MAF adapter (#4) and tighten down using two supplied button head bolts (#19). **Do Not Use The Factory Screws!**



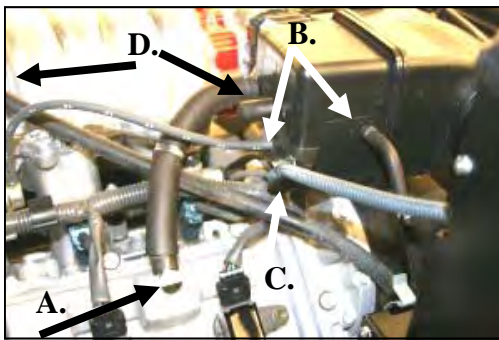
8. Install the Airaid Premium Filter (#1) onto the MAF adapter. Next install the weather strip on top of the CAD. Start at the radiator end and work you way towards the back.

9. Stage II

For maximum airflow and aggressive sound from your vehicle, proceed with installing the Airaid Modular Intake Tube (#5). The MIT can be added or taken off of your vehicle at any time depending on your preference. If you choose not to install the MIT, skip to step #19 on the back page.



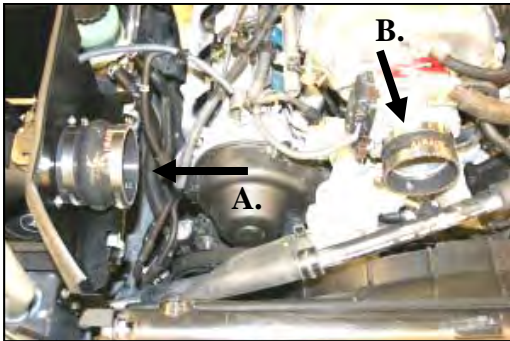
10. A) Remove two 10mm nuts and remove the beauty cover. (Save for reinstallation.) B) Remove bolt thru Adel clamp for air conditioning hose. C) Loosen the hose clamp on the factory intake tube at the throttle body and the airbox if it was tightened in step #5.



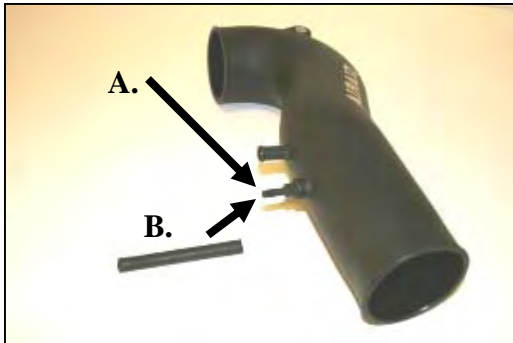
11. A) Disconnect breather hose at the valve cover. B) Disconnect 1/4" and 1/8" vacuum lines on the back of the factory intake tube. C) Unclip MAF wire harness retainer from the intake tube. D) *Sequoias and 2000-02 Tundras only; remove 3/8" vacuum hose between factory intake tube and metal fitting on top of the intake manifold. (Hose Not Shown)*



12. Remove the factory intake tube.



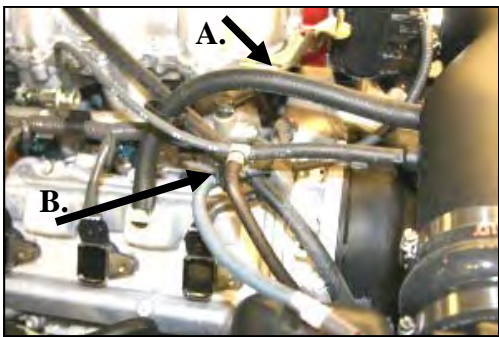
13. A) Install the hump hose (#7) small end towards the MAF, with two hose clamps (#10) onto the MAF adapter (#4). B) Install the reducing coupler (#6), small end towards the throttle body with two hose clamps (#10). Leave the clamps loose for now.



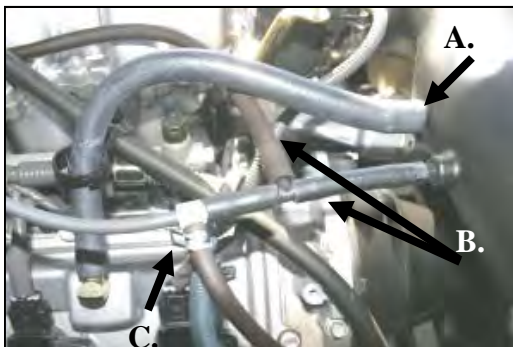
14. A) Install the 1/4" barb fitting (#11) into the Airaid Modular Intake Tube (#5). B) Next slip the 1/4"x4" hose (#13) onto the barb fitting.



15. Install the Airaid MIT (#5) into the hump hose first, and then into the coupler. Adjust the MIT snugly against the throttle body and tighten the all four clamps and tighten the supplied button head bolt (#17), and washer (#18) thru the Adel clamp, and thread into the MIT. (See arrow)



16. **03-04 Tundra, 04 Sequoia**
A) Install the 1/2"x13" breather hose from the MIT to the valve cover. B) Install the vacuum tee (#12) into the 1/4"x4" hose (#13) and then into the factory 1/4" vacuum hose, and 1/8" vacuum hose as shown. Refer to the hoses in step #11. Reinstall the beauty cover from step #10.



17. **All Other Applications**
A) Install the 1/2"x13" (#9), breather hose from the MIT to the valve cover. B) Cut the 1/4"x4" hose in half, and install the 1/4"x1/4"x3/8" tee (#21) between the two halves. Connect the supplied 3/8"x17" hose between the tee, and the factory metal fitting above the intake manifold. Squeeze the supplied speed clamp (#22) over the hose at the factory metal fitting. (not shown) C) Install the vacuum tee (#12) into the 1/4"x4" hose (#13) and then into the factory 1/4" vacuum hose, and 1/8" vacuum hose as shown. Refer to the hoses in step #11. Reinstall the beauty cover from step #10.

18. Double check your work!

Make sure there is no foreign material in the intake path. Make sure all clamps, hoses, bolts, and screws are tight.

19. Reconnect the negative battery cable!

Before!



After!



SynthaMax

Do Not Oil

Synthamax Air Filters do not require oil. Service air filter as needed by cleaning with common non-petroleum all-purpose household cleaner and water. Simple Green®, Formula 409® or equivalent works great. Apply cleaner to outside of air filter and allow to soak. Then flush filter clean from the inside out with a garden hose and repeat steps if necessary. Do not apply high pressure water or air to clean filter. Allow filter to air dry and reinstall.

Thank you for purchasing the Airaid Intake System. Contact Airaid @ (800) 498-6951 8:00 AM - 5:00 PM MST weekdays for questions regarding fit or instructions that are not clear to you. Your Airaid Intake System was carefully inspected and packaged. Check that no parts are missing, or were damaged during shipping. If any parts are missing, contact Airaid. The air filter element is protected from direct exposure to water and debris; care should be taken not to drive through deep water. WATER INGESTION IS THE DRIVERS RESPONSIBILITY!

Airaid Filter Co. 2688 E Rose Garden Ln. Phoenix AZ 85050 (800) 498-6951 AiraidInfo@airaid.com www.airaid.com

Instructions Revision
Date: 10/25/10