



Installation Instructions
Part Number 883-282
Intake kit with scoop

2008-14 Polaris Ranger RZR 800



Tools Required For Installation:
 7/16" and 1/2" Wrenches. 10mm, 7/16", and 1/2" Sockets.
 T-25 Torx driver. Ratchet & Extension.
 1/8" & 5/16" Drill bits. 3" hole saw and drill.
 Center punch and Mallet
 Phillips and Standard Tip Screwdrivers.
 Locktite ® 242 or equivalent, and a roll of tape

AIR AID[®]
INTAKE SYSTEMS

Advisory Note:

Please read these installation instructions in their entirety before beginning the install process. Airaid strongly recommends the use of Locktite® 242 Medium strength threadlocker on all threaded fasteners.



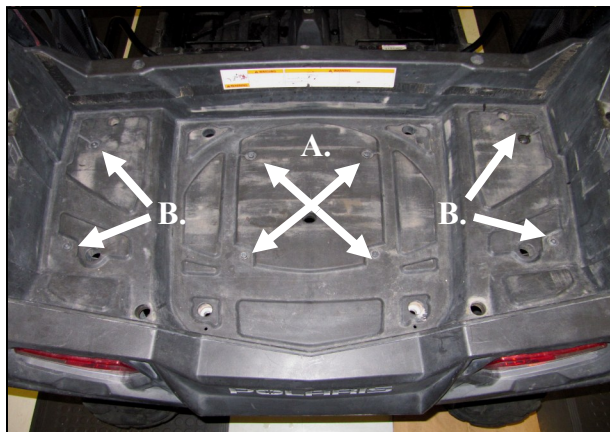
1. Many of the panels needing to be removed for this installation are held in place with the use of nylon rivets. Nylon rivets are reusable if care is taken during their removal and installation. Using a small standard blade screwdriver, gently pry up on the center post until the entire rivet can be pulled freely from the panel. Rivet installation is the opposite.



2 Place the range selector in Park. And remove both driver and passenger seats. Disconnect the negative terminal on the battery.



3. Remove the front engine cover by rotating the two twist locks counter clockwise and lifting out.



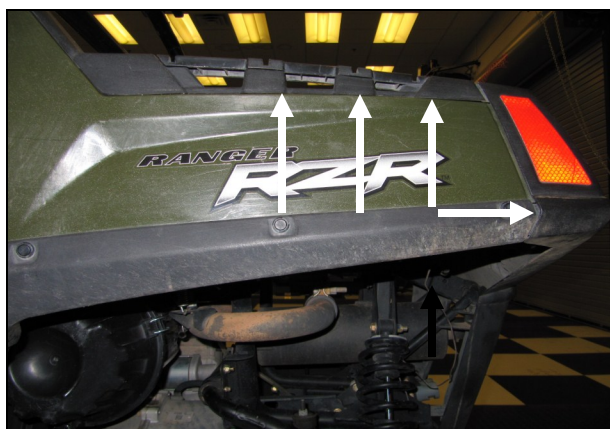
4. Remove the bed bolts
 A.) Using a 1/2" socket, remove the four inner bed bolts.
 B.) Using a T-25 Torx driver, remove the four outer bed bolts.



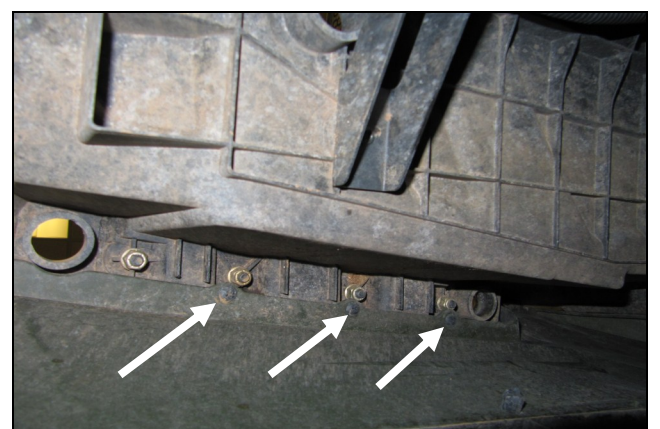
5. Using a T-25 Torx driver and a 7/16" wrench, remove the two outer bed bolts.



6. Using a T-25 Torx driver, remove the four outer bed bolts.



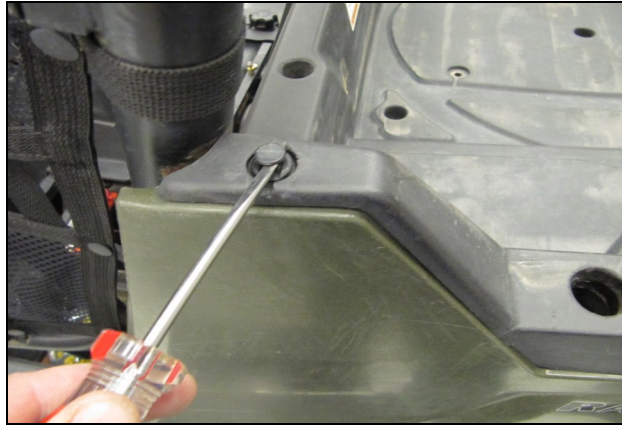
7. The bed is fastened from underneath by four Phillips head screws in these locations. Remove these screws on both the driver and passenger sides of the vehicle.



8. Under side view of three bed screws to remove.



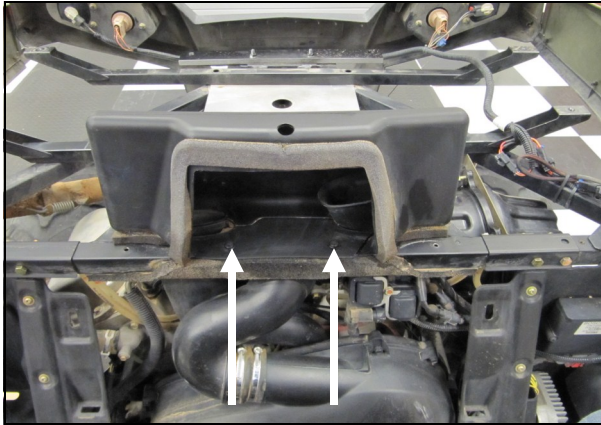
9. Underside view of fourth screw in need of removal.



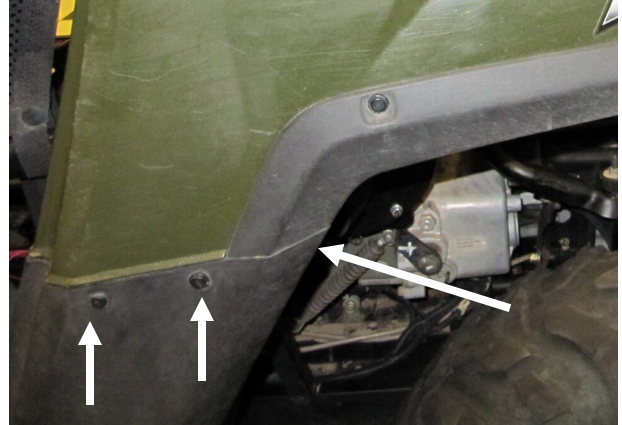
10. Remove the nylon rivet securing the bed to the panel on both sides of the vehicle.



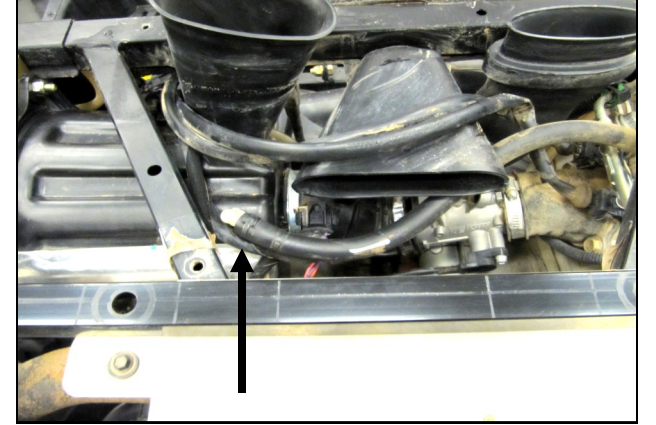
11. Completely remove the bed and set it aside.



12. Remove the two rivets holding the intake shroud to the frame. Then remove the shroud and set it aside.



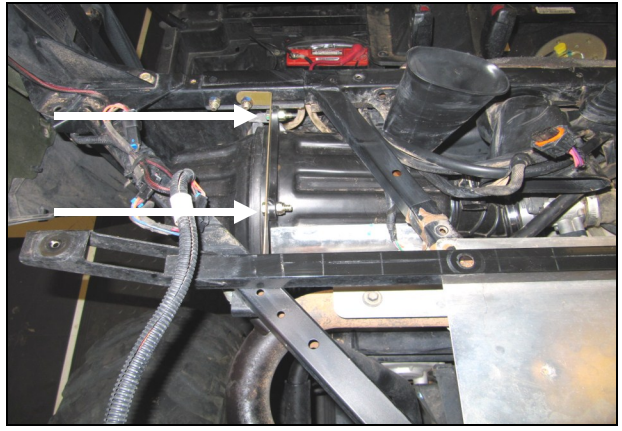
13. Remove the last three rivets securing the drivers side quarter panel. Remove the panel from the vehicle.



14. Disconnect the PCV breather from the fitting in the factory filter housing. Remove the spring clamp from the breather line and discard. It will not be reused.



15. Loosen the large clamp on the factory intake tube



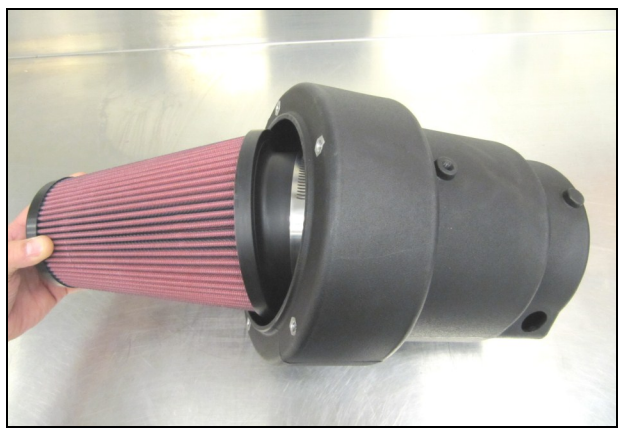
16. Remove the two bolts at top of the factory air filter housing and remove the entire housing from the vehicle.



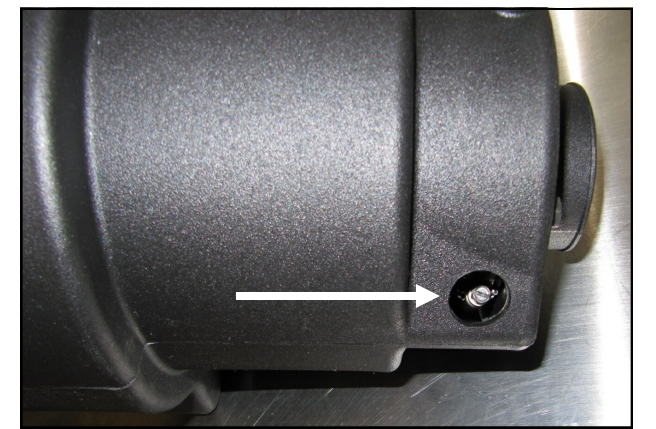
17. Prepare the Filter Adapter (#7) for installation by aligning the bolt holes with those on the Adapter Gasket (#21).



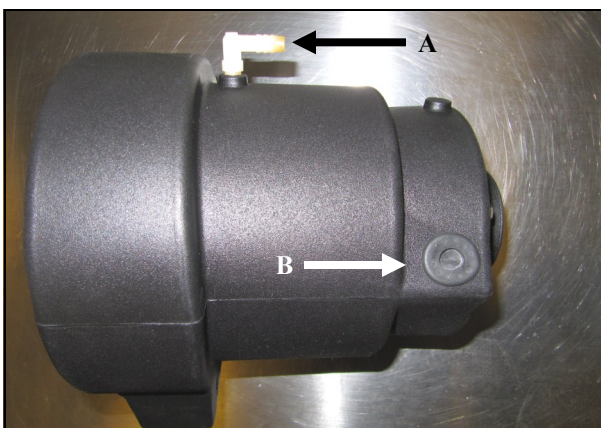
18. Mount the Filter Adapter and gasket inside the Airaid Cold Air Box (#2) using three 1/4-20 x 5/8" Hex Bolts (#12), 1/4" Flat Washers (#14), and 1/4" Nylock Nuts (#17).



19. Insert the Airaid Premium Filter (#1) into the Cold Air Box and onto the Filter Adapter.



20. Rotate the filter inside the Air Box until the clamp adjuster lines up in the center of the access port. Tighten the clamp.



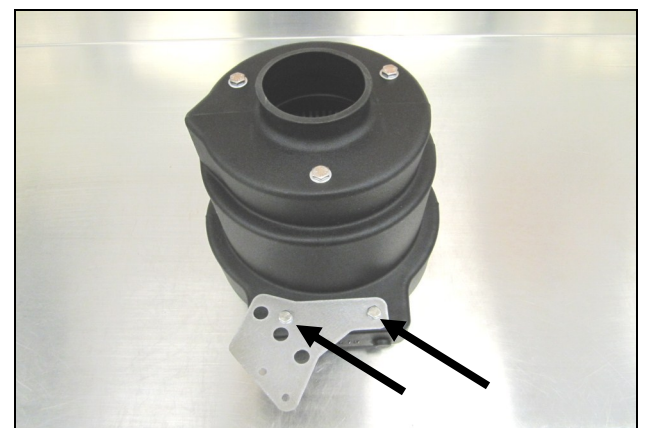
21. A.) Transfer the OEM PCV fitting from the factory filter housing into the Airaid Air Box as shown.

B.) Install the Plug Grommet (#28) into the access port.



22. Install the 1/8" NPT Drain Plug (#25) into the Airaid Air Box.

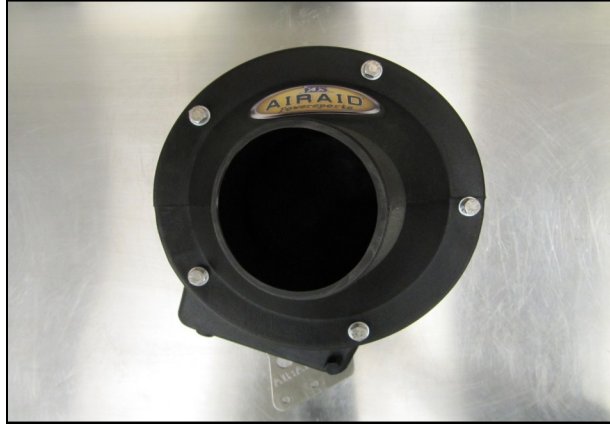
Note: This Plug is designed to be used as a water drain from the lowest point of the intake in the event of water ingestion. If at any point you suspect you may have ingested water, or are uncertain, remove plug for inspection.



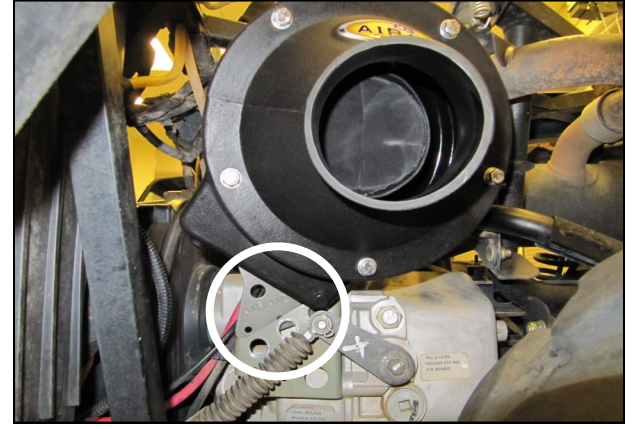
23. Mount the Transmission Bracket (#9) to the Air Box using two 1/4-20 x 5/8" Hex Bolts, and 1/4" Lock Washers (#15).



24. Place the Air Box Gasket (#22) onto the face of the Air Box and align the bolt holes.



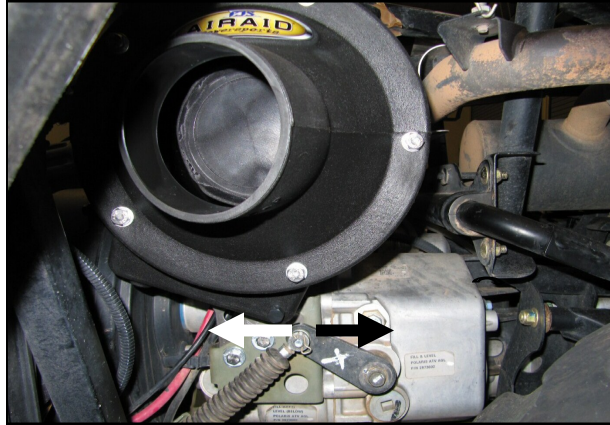
25. Install the Air Box Top (#3) onto the Air Box using five 1/4-20 x 1" Hex Bolts (#13), 1/4" Flat Washers (#14), and 1/4" Lock Washers (#15).



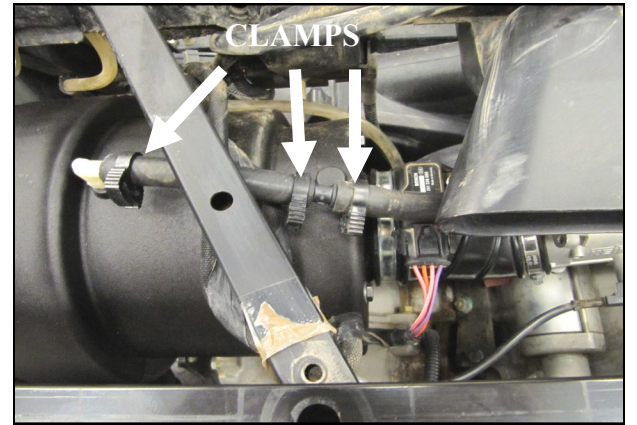
26. Place the Air Box assembly into the vehicle with the Air Box's Bracket behind the factory bracket as shown. Connect the factory intake tube to the Airaid Air Box and tighten the clamp.



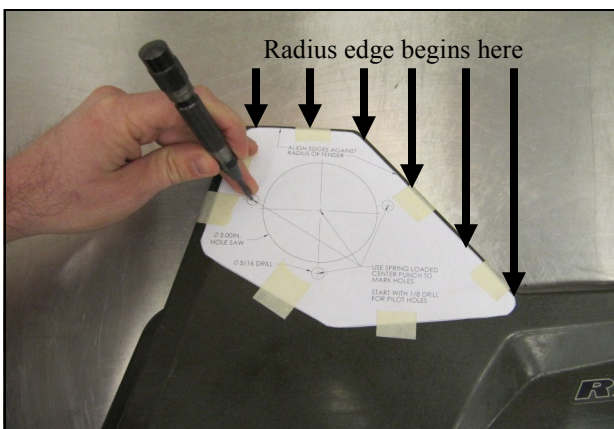
27. Fasten the Transmission Bracket to the transmission using the two 1/4-20 x 5/8" Hex Head Bolts (#12), 1/4-20 Flat Washers—Large (#16), Trans Mount Washers (#10), and 1/4-20 Lock Nuts (#17).
Note: It is intended for the Trans Mount Washers to fit inside the holes in the OEM bracket when properly installed.



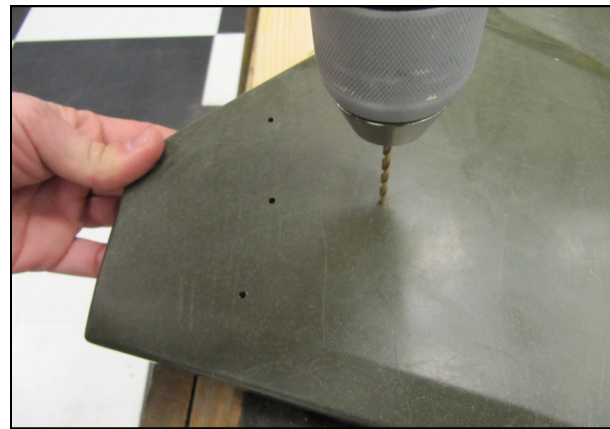
28. Check for clearance between the Air Box and the transmission linkage by shifting into all ranges. Readjust the Air Box and Bracket if more clearance is needed and make the bolts final tight.



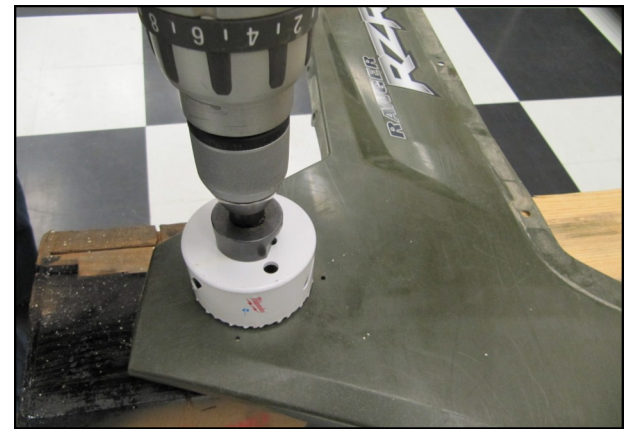
29. Extend the factory PCV breather.
A.) Connect the supplied 3/8" hose (#27) to the factory PCV breather using the 3/8" Hose Fitting (#26).
B.) Join the extended breather line to the 90 deg. Fitting in the top of the Air Box and secure using the three Speed Clamps (#29).



30. Cut out the Air Scoop Template and carefully position it so that the top and right edges align with the panel's radius. Use tape to hold in position while marking holes with a punch.



31. Drill four 1/8" Pilot Holes in the Panel.



32. Cut the large hole in the panel using a drill with a 3" hole saw.



33. Drill 5/16" bolt holes in the Panel.



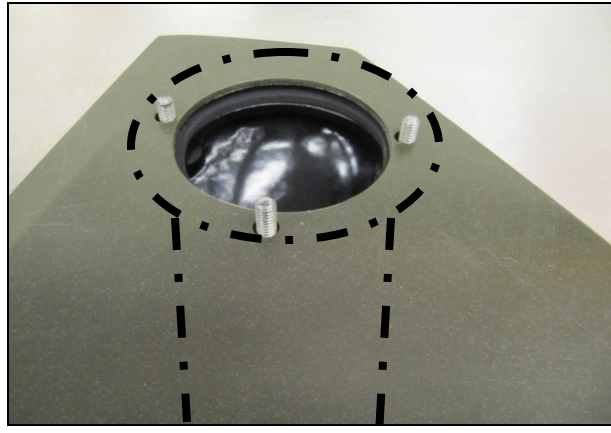
34. Slide the Hump Hose (#8) and clamps onto the Riser Tube (#4) as shown. The #52 Clamp (#19) is to be installed on the Tube side and the #60 Clamp (#20) on the other. Leave the clamps loose for now.



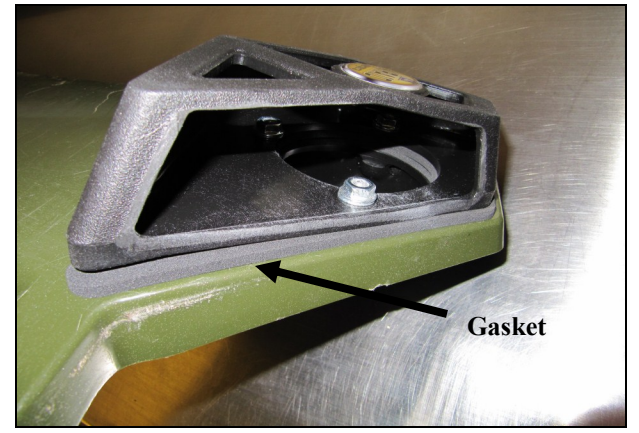
35. Install the Threaded Studs (#11) into the Riser Tube.



36. Slide the Riser Tube Gasket (#23) on to the Threaded Studs.



37. Slide the Riser Tube with Studs and gasket through the panel as shown.



38. Mount the Air Inlet Scoop.

A.) Slide the Air Inlet Scoop(#6) and Air Scoop Gasket (#24) onto panel and Studs.

B.) Fasten the Scoop to the Riser Tube Studs using the three 1/4-20 Flange Nuts (#18) and 1/4" Flat washers.



39. Re install the panel, Scoop, and Riser Tube onto the vehicle. Slide the Hump Hose and clamps onto the Air Box Inlet, and tighten the Clamps.

Reinstall the remaining factory panels and the bed in the reverse order in which they were removed.



40. Insert the Foam Pre Filter (#6) into the Air Scoop as shown.



41. Double check your work!

Make sure there is no foreign material in the intake path. Make sure all clamps, hoses, bolts, and screws are tight. Reconnect the negative battery cable and reinstall the seats.

Thank you for purchasing the Airaid Intake System. Contact Airaid @ (800) 498-6951 8:00 AM - 5:00 PM MST weekdays for questions regarding fit or instructions that are not clear to you. Your Airaid Intake System was carefully inspected and packaged. Check that no parts are missing, or were damaged during shipping. If any parts are missing, contact Airaid. The air filter element is protected from direct exposure to water and debris; care should be taken not to drive through deep water. WATER INGESTION IS THE DRIVERS RESPONSIBILITY.

Filter Service

Airaid recommends following the manufacturers maintenance schedule for filter cleanings.

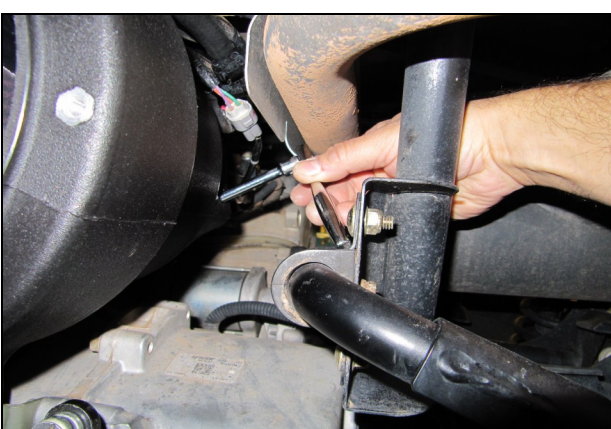
“Air filters should be inspected before each ride. Filter and pre-filter need to be replaced at least annually and more often if subjected to severe use.”

The Airaid filter is reusable and should be cleaned using the Airaid Filter Tune-Up Kit .

The Foam Pre Filter is reusable and can be cleaned using a mild detergent and water.



1. Loosen the Clamps on the Hump Hose and slide it back. Remove the 1/4" bolts and washers from the Air-Box Top and slide out the Top



3. Remove the Plug Grommet in the access port and loosen the filter Clamp. A 1/4" drive ratchet with a 3" extension and a 5/16" socket works best.



3. . The Filter can now be removed for service and inspection. Thoroughly inspect the interior of the Air Box for water and large pieces of debris that may have been ingested.

Snorkel Option

For deep water crossings and the cleanest air possible on the trail. Airaid offers the RZR Snorkel Kit.

- Replaces Air Scoop and Pre filter
- Prolongs Cleaning Intervals
- Bolts on to Airaid Riser Tube flange
- Can be installed on almost any cage

Part Number 883-283

Airaid Snorkel kit is not a stand alone part and must be used in conjunction with the Airaid Intake.



Pre Filter Option

For maximum protection in the harshest of environments. Airaid offers a slip on Pre Filter for the 700-411 Air filter.

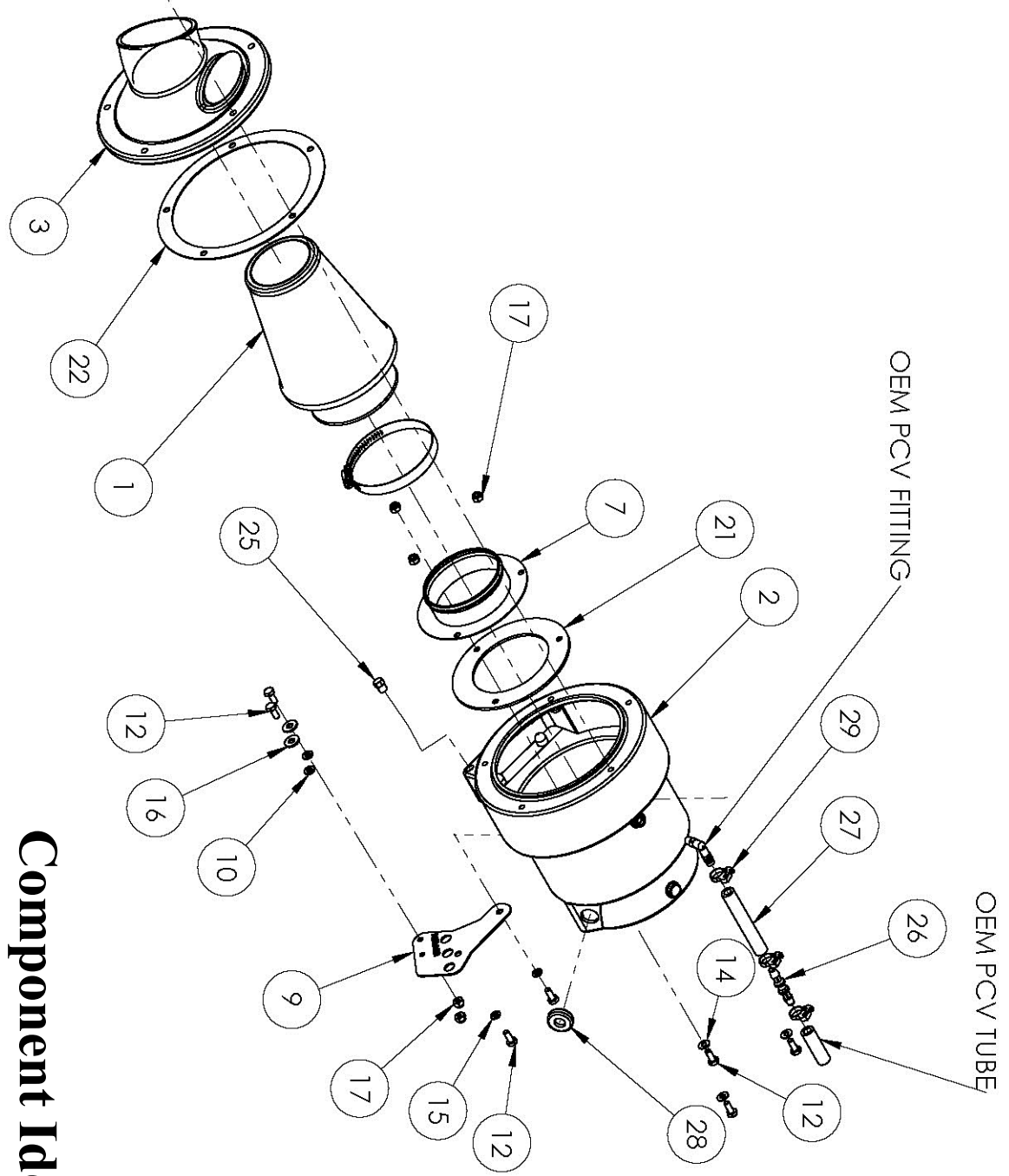
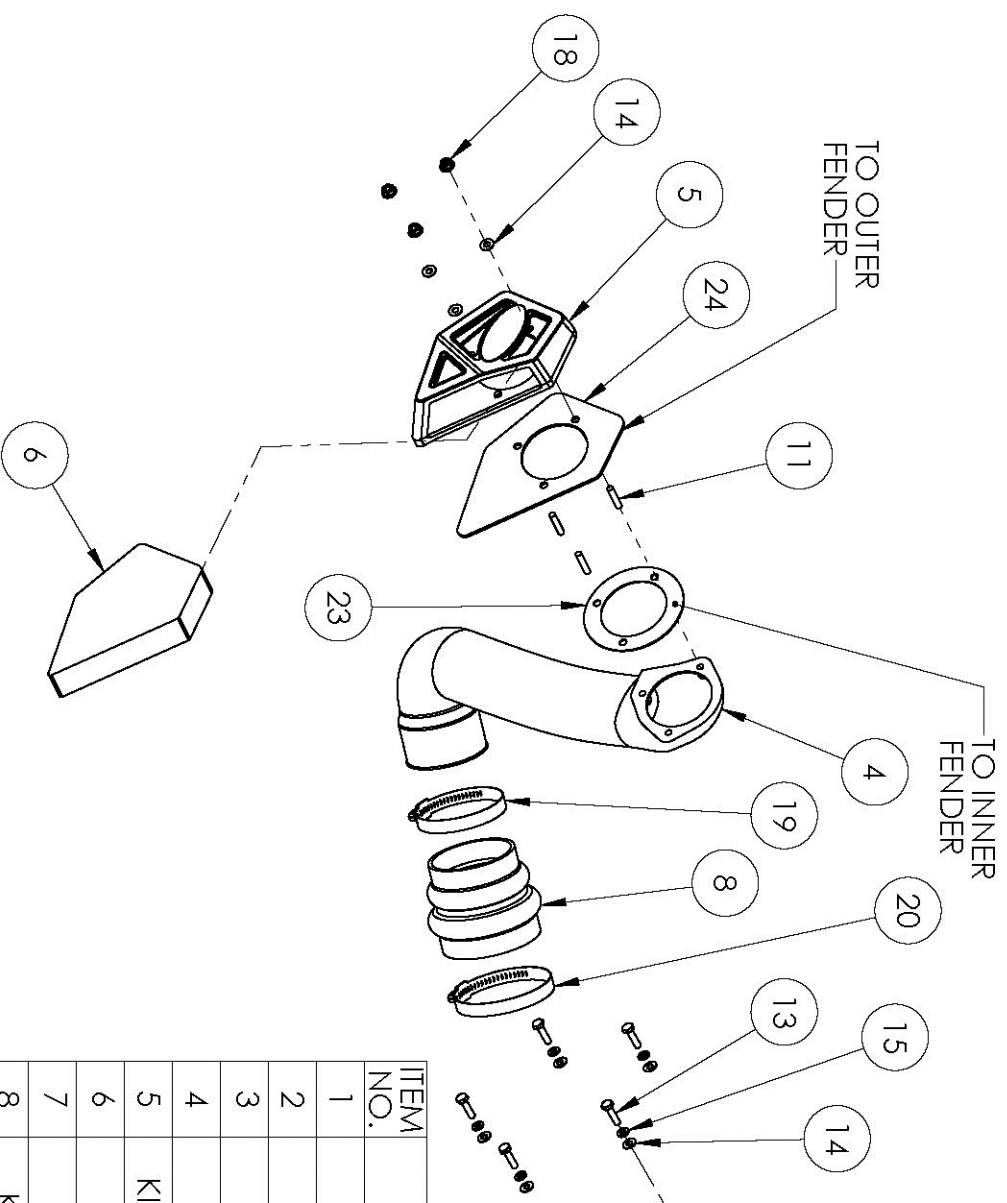
- Prolongs Cleaning Intervals
- Water Repellant
- Free Flowing Protection

Part Number 799-411

Don't Forget Your AIRAID Filter Tune-Up Kit!

P/N 790-551 Aerosol Spray
P/N 790-550 Squeeze Spray





Component Identification

| ITEM NO. | P/N | DESCRIPTION | QTY. |
|----------|---------------|-----------------------------|------|
| 1 | 700-411 | AIR/AID Premium Filter | 1 |
| 2 | KIT275CAB | Cold Air Box | 1 |
| 3 | KIT275TOPC | Air Box Top | 1 |
| 4 | KIT275RT | Riser Tube | 1 |
| 5 | KIT275SCOOPC | AIR INLET SCOOP | 1 |
| 6 | KIT275ASF | Air Scoop Foam Prefilter | 1 |
| 7 | KIT275A | Filter Adapter | 1 |
| 8 | KITHUMPHS10 | Silicone Hump Hose | 1 |
| 9 | KIT275B | BRACKET, TRANS MOUNT | 1 |
| 10 | KIT275BW | WASHER, TRANS MOUNT | 2 |
| 11 | KITSTUD05 | 1/4-20X1-1/4L Threaded Stud | 3 |
| 12 | KIT25C62HCSS | 1/4-20 x 5/8L Hex Bolt | 7 |
| 13 | KIT15CSC30251 | 1/4-20 x 1.00L Hex Bolt | 5 |
| 14 | KIT09FWZ019 | 1/4" Flat Washer | 11 |
| 15 | KIT09LWZ025 | 1/4" Lock Washer | 7 |

| ITEM NO. | P/N | DESCRIPTION | QTY. |
|----------|--------------|------------------------------------|------|
| 16 | KIT25NWUSPZ | Large 1/4" Flat Washer | 2 |
| 17 | KIT25CNNES | 1/4" Lock Nut | 5 |
| 18 | KIT1420WZZF | 1/4-20 Serrated Nut | 3 |
| 19 | KITHS52 | #52 Hose Clamp | 1 |
| 20 | KITHS60 | #60 Hose Clamp | 1 |
| 21 | KIT214G | Adapter Gasket | 1 |
| 22 | KIT275G | Airbox Gasket | 1 |
| 23 | KIT275STG | Snorkel Tube Gasket | 1 |
| 24 | KIT275ASG | Air Scoop Gasket | 1 |
| 25 | KITFITTING22 | 1/8" NPT Plug | 1 |
| 26 | KITFITTING23 | 3/8" Straight Hose Coupler Fitting | 1 |
| 27 | KITHOSE06 | 3/8" Hose 4.0"L | 1 |
| 28 | KITGRMT01 | Grommet Plug | 1 |
| 29 | KITSNP14M4 | 5/8" Speed Clamp | 3 |

ATTENTION !

VERIFY THAT SCALING ON YOUR PRINTER HAS BEEN TURNED OFF WHILE PRINTING THIS TEMPLATE. USE PATTERN BELOW TO VERIFY CORRECT SCALING

