



## STEP 1 – PRIOR TO INSTALLATION

- A) Bushwacker only** approves installing the flares according to these written instructions with the hardware provided. **WARNING:** Failure to install according to these instructions will invalidate the warranty. This includes, but is not limited to using alternative installation methods, hardware, or materials. **DO NOT USE:** Loctite, SuperGlue, or similar products on the hardware or the flares.
- B) Fit:** Verify the fit of the flares to vehicle. (Some filing, sanding, or cutting may be necessary to ensure proper fit).
- C) Painting:** (Optional) if paint is desired it must be done prior to installing flares on vehicle. Clean outer surface with a good grade degreaser. **DO NOT USE LACQUER THINNER OR ENAMEL REDUCER AS A DEGREASER.** Wipe outer surface thoroughly with a tack rag prior to paint. Application of plastic adhesion promoter for ABS plastic as per your paint system manufacturer's recommendations is required. Paint flares using a high quality enamel, or polyurethane automotive paint. If painting edge trim (not recommended), use a flex additive.
- D) Performance:** Using larger Tires may increase the area required to turn the vehicle. Some Tire/Rim combinations may require lowering bump stops and or installing steering stops to prevent tire from contacting flare.
- E) Exhaust System:** Modifications may be necessary to maintain a minimum 4" clearance between flares and exhaust pipes. (Exhaust gases should not vent directly onto flares)
- F) Metal Protection:** All exposed fasteners and bare metal should be treated with rust resistant paint **BEFORE** installing flares. Spray inner fender wells with undercoating **AFTER** flare attachments have been completed.
- G) Decals:** Flares may interfere with existing decals on vehicle. If you wish, remove decals prior to installation of flares.

# Ford Cut-Out™ Fender Flares Rear Pair

Rear Part #20046-02

Rev-11 9/22/2014

For complete fitment info visit : [www.bushwacker.com](http://www.bushwacker.com)






## TOOLS FOR EASY INSTALLATION:

- Grease Pencil
- Masking Tape
- Measuring Tape
- Pry Tool
- Pliers
- Electric Drill
- 1/8" Drill Bit
- 13/64" Drill Bit
- #2 Phillips Driver
- Awl or Similar Pointed Tool
- Grinder
- Sawsall
- Center Punch
- Urethane Caulking

## LIMITED LIFETIME WARRANTY AGAINST ANY MANUFACTURING DEFECTS

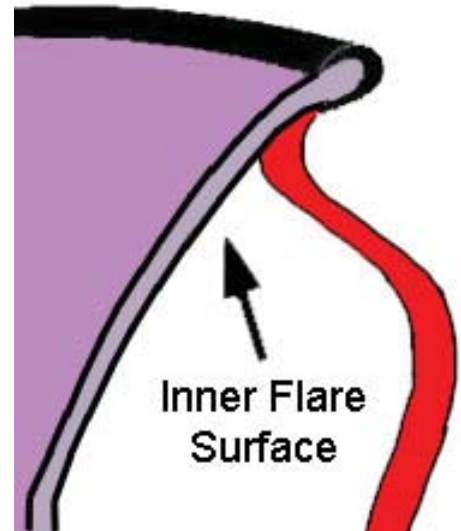
- To claim a warranty, you must provide Proof of Purchase.

## Included in Hardware Kit:

- |    |   |    |   |    |   |    |   |    |  |
|----|---|----|---|----|---|----|---|----|--|
| 1. |  | 2. |  | 3. |  | 4. |  | 5. |  |
|    | SP1-0009,<br>3/8" x 5/8" x .187"<br>Neo Black Spacer,<br>20 pcs                     |    | SW1-0045,<br>#14-14 x 1"<br>Torx Screw,<br>20 pcs                                   |    | SW1-0066,<br>#8 x 5/8" Phillips<br>PH Drill Screw,<br>8 pcs                         |    | SW1-0052,<br>T-45 Torx Bit,<br>1 pc   |    | GP1-0008,<br>Duro (NC02/S 70)<br>Edge Trim,<br>196 inches                            |

## STEP 2 - EDGE TRIM INSTALLATION

- A)** Peel two to three inches of red vinyl backing away from Edge Trim (GP1-0008) tape. Applying the adhesive side of the edge trim to the inner side of the flare, affix the edge trim to the top edge of the flare (the portion that comes in contact with the vehicle).
- B)** Press edge trim into place along the top edge of the flare in one-foot increments, pulling red vinyl backing free as you continue to work your way around the top edge of the flare.



## Rear Flare Installation Procedures (Driver's Side):



Measure 3" from back side of rear wheel well and mark using a grease pencil.



Starting from bottom under edge below mark made in previous step, measure up following curve of wheel well approximately 15" to lower style line and mark with grease pencil.



Using marks as a guide, use masking tape to create an arc from the lower mark to the upper mark, then continue around wheel well along style line. See Step 4.



This is how the masking tape should look.



Using a pry tool, remove two factory installed tuflocs from splash guard



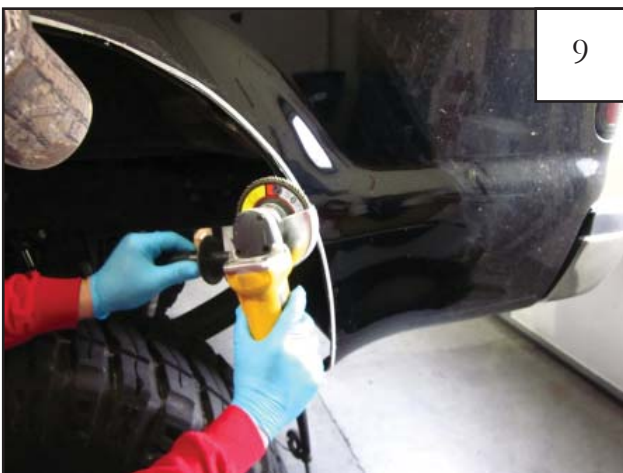
To avoid cutting the splash guard, push it into back of wheel well.



Using a sawsall, cut along inner edge of tape line. **WARNING:** Angle blade downward/inward for a better (angled) cut in the double walled sheel metal and to **avoid cutting support rod**. See next step.



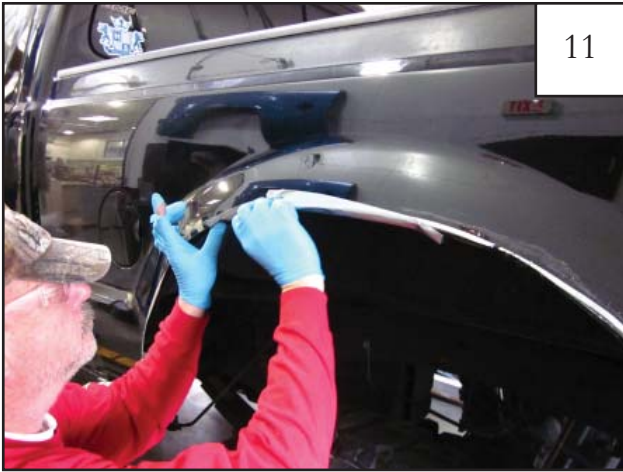
When cutting, be aware of support rod behind front side of wheel well. Angle blade inward to avoid cutting it.



Using a grinder, deburr cut edges.



Use urethane caulking to fill between walls of cut fender. Follow caulk directions for drying time. See next step.



11

If needed, use tape to prevent caulk from dripping while drying.



12

With a partner holding flare in place, using a scratch awl and pocket holes in flare as a guide, mark vehicle for drilling.



13

Using marks made with scratch awl as a guide, score the sheet metal with a center punch prior to drilling.



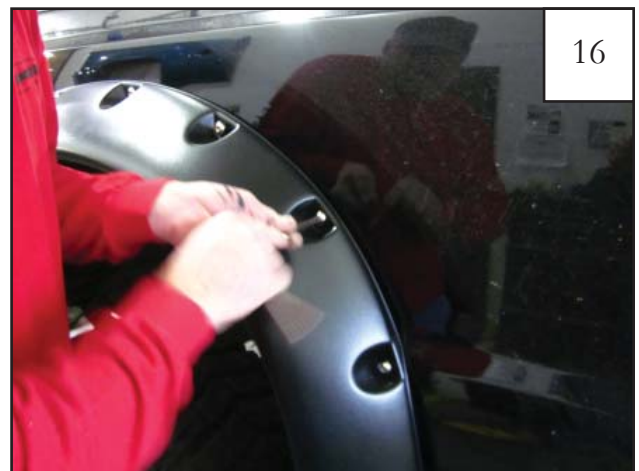
14

Using a 1/8" bit, drill marked hole locations. Then, using a 13/64" bit, drill holes again.



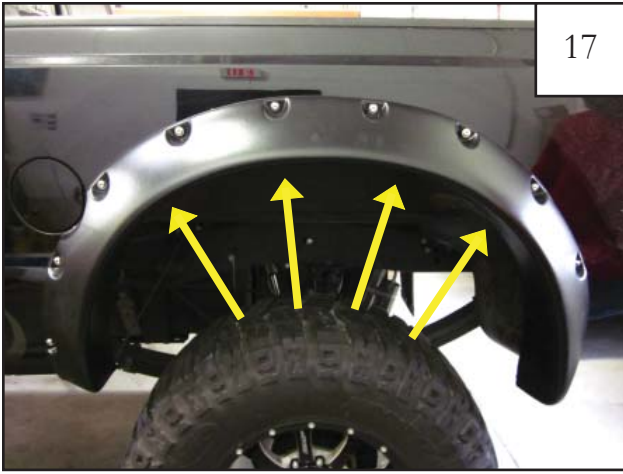
15

Thread bolt (SW1-0045) through pocket hole in flare then install spacer (SP1-0009) over end of bolt. *Hand tighten* spacer on bolt until snug near flare plastic.



16

Using torx bit (SW1-0052), *start* bolts installed in Step 15 through holes drilled in Step 14. *Once all bolts are in place, tighten all screws.*



Using a #2 Phillips Driver, fasten screws (SW1-0066) through flare and into inner fender using holes in flare as a guide. \*Sample Photo\*



Completed rear flare installation. \* Sample Photo \*