



STEP 1 – PRIOR TO INSTALLATION

- A) Bushwacker only** approves installing the flares according to these written instructions with the hardware provided. **WARNING:** Failure to install according to these instructions will invalidate the warranty. This includes, but is not limited to using alternative installation methods, hardware, or materials. **DO NOT USE:** Loctite, SuperGlue, or similar products on the hardware or the flares.
- B) Fit:** Verify the fit of the flares to vehicle. (Some filing, sanding, or cutting may be necessary to ensure proper fit).
- C) Painting:** (Optional) if paint is desired it must be done prior to installing flares on vehicle. Clean outer surface with a good grade degreaser. **DO NOT USE LACQUER THINNER OR ENAMEL REDUCER AS A DEGREASER.** Wipe outer surface thoroughly with a tack rag prior to paint. Application of plastic adhesion promoter for ABS plastic as per your paint system manufacturer's recommendations is required. Paint flares using a high quality enamel, or polyurethane automotive paint. If painting edge trim (not recommended), use a flex additive.
- D) Performance:** Using larger Tires may increase the area required to turn the vehicle. Some Tire/Rim combinations may require lowering bump stops and or installing steering stops to prevent tire from contacting flare.
- E) Exhaust System:** Modifications may be necessary to maintain a minimum 4" clearance between flares and exhaust pipes. (Exhaust gases should not vent directly onto flares)
- F) Metal Protection:** All exposed fasteners and bare metal should be treated with rust resistant paint **BEFORE** installing flares. Spray inner fender wells with undercoating **AFTER** flare attachments have been completed.
- G) Decals:** Flares may interfere with existing decals on vehicle. If you wish, remove decals prior to installation of flares.

GMC Pocket Style® Fender Flares Front Pair

Set Part #40121-02
Rev-1 11/18/2013

For complete fitment info visit : www.bushwacker.com

TOOLS FOR EASY INSTALLATION:

- Socket Wrench
- 10mm Deep Socket
- 1/2" Socket
- 9/32" or 7mm Socket
- #2 Phillips Screwdriver
- 3/32" Drill Bit
- Right Angle Electric Drill
- Grease Pencil
- Floor Jack

TOOL REFERENCE:



Right Angle Electric Drill

LIMITED LIFETIME WARRANTY AGAINST ANY MANUFACTURING DEFECTS

- To claim a warranty, you must provide Proof of Purchase.

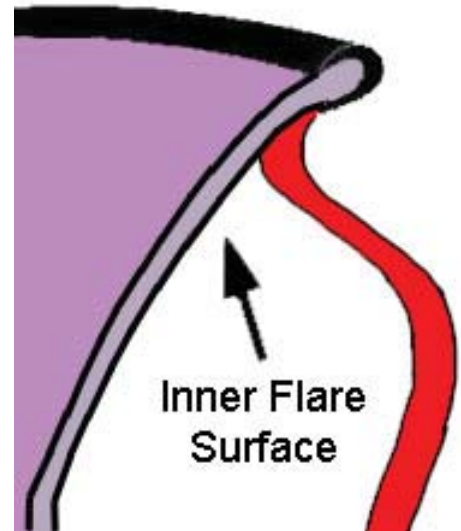
Included in Hardware Kit:

- | | | | | | | | | | | | | | |
|----|---|----|---|----|---|----|---|----|--|----|---|----|---|
| 1. |  | 2. |  | 3. |  | 4. |  | 5. |  | 6. |  | 7. |  |
| | SW1-0015, #8 x 1/2" Phillips PH Drill Screw, 2 pcs | | SW1-0056, #8 x 3/4" PH Screw, 8 pcs | | SW1-0067, 5/16 x 18 x 3/8" SS Torx Screw, 18 pcs | | WA1-0012, .320 x .700 x .03 SS Washer, 18 pcs | | NU1-0019, 5/16-18 Jam Fin. Nylock Nut, 18 pcs | | GP1-0008, Duro (NC02/S 70) Edge Trim, 165 inches | | ET1-0002, Edge Trim Tool, 1 pc |
| 8. |  | | | | | | | | | | | | |
| | SW1-0052, T-45 Torx Bit, 1 pc | | | | | | | | | | | | |

STEP 2 - EDGE TRIM INSTALLATION

A. Peel two to three inches of red vinyl backing away from Edge Trim (GP1-0008) tape. Applying the adhesive side of the edge trim to the inner side of the flare, affix the edge trim to the top edge of the flare (the portion that comes in contact with the vehicle).

B. Press edge trim into place along the top edge of the flare in one-foot increments, pulling red vinyl backing free as you continue to work your way around the top edge of the flare.



Pocket Hardware Installation Procedures:



Put a Washer (WA1-0012) on each Bolt (SW1-0059).



Put each Bolt/Washer combination through a pocket hole in the flare, Bolt head and Washer on the outside.



Place a Nut (NU1-0019) over the end of each Bolt and tighten, using a 1/2" wrench for the Nut and the supplied Torx Bit (SW1-0052) for the Bolt. Repeat for remaining pockets.

Front Flare Installation Procedures (Passenger Side):



Turn front tire outward for easier installation. Factory wheel arch molding must be removed prior to part installation. See next steps.



FOR MODELS WITH FACTORY MUDFLAP: Remove mud flap fasteners. Use T-30 Torx bit for two upper fasteners. Use T-15 Torx Bit for two lower fasteners and use a Phillips Head Screwdriver for Bottom fastener.



Remove two lower fasteners from factory wheel arch molding using a T-15 Torx Bit.



Remove fastener from front of factory wheel arch molding using a 9/32" or 7mm socket and wrench. Save for reinstallation.



Remove two fasteners along top of factory wheel arch molding using a T-15 Torx bit.



Remove fastener from rear underside of factory wheel arch molding using a 1/2" socket and wrench. Save for reinstallation.



10

Starting at the lower rear end of the factory flare, firmly grip part and pull to remove from vehicle. *Note: You will hear popping sounds as the factory fasteners release from vehicle. This is normal.*



11

Use a pry tool to remove any remaining factory fasteners that may have stayed on the vehicle during the removal process.



12

Reinstall factory fastener removed in step 9 using a 1/2" socket and wrench.



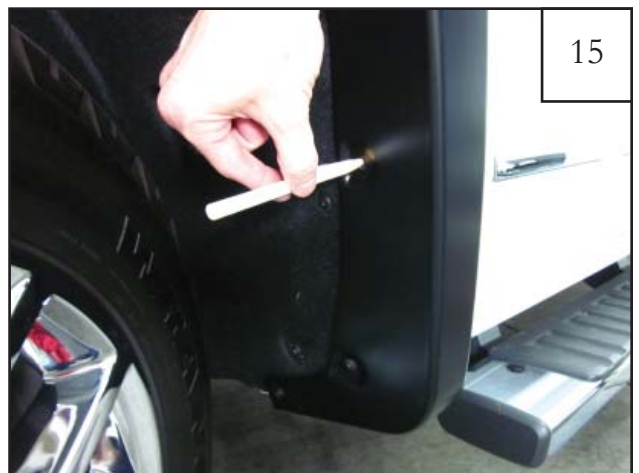
13

Hold Front Flare up to wheel well to confirm fit. Do not install fasteners at this time.



14

While holding Flare on vehicle, install supplied screw (SW1-0056) into the two upper and lower factory holes locations. Do not fully tighten at this time.



15

Using a grease pencil or marker, mark one hole location for drilling using the upper rear hole location in the flare as a guide. *Note: This step not needed for models with factory installed mudflaps.*



Remove the flare. Using a 3/32" drill bit, drill a pilot hole through the factory wheel well liner and sheet metal at location marked in previous step.



While holding Flare on vehicle, install supplied screws (SW1-0056) into the two upper and lower factory holes locations. Do not fully tighten at this time.



While holding Flare on vehicle, install factory screw removed in step 7 through flare and into factory hole. Do not fully tighten at this time.



Install self-tapping screw (SW1-0015) into pilot hole drilled in step 16. Press flare towards vehicle while fully tightening. *Note: This step not needed for models with factory installed mudflaps.*

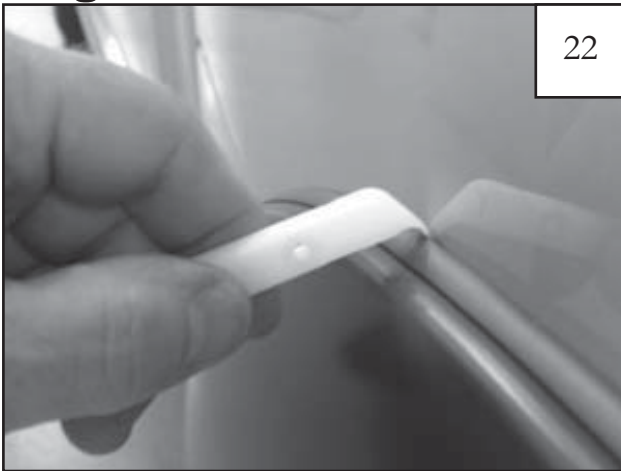


FOR MODELS WITH FACTORY MUDFLAP: Reinstall factory fastener removed from mudflap in step 5. Press flare towards vehicle while fully tightening using a T-30 Torx Bit.



Press flare towards vehicle and fully tighten all remaining fasteners.

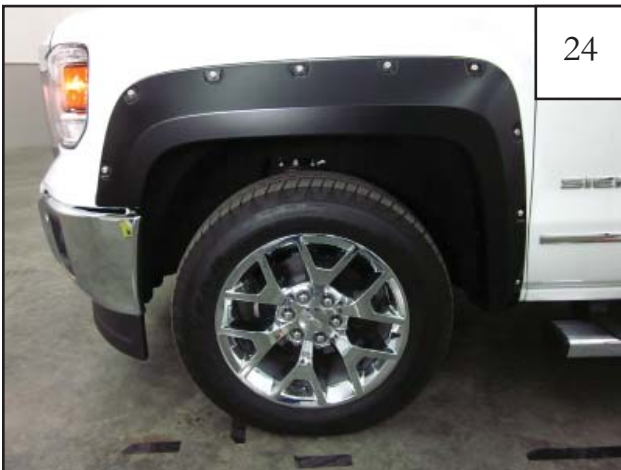
Edge Trim Tool Procedures:



Using supplied Edge Trim Tool (ET1-0001), seat edge trim against vehicle by hooking curved end under edge trim at one end of flare. Next, slide around outer edge of flare to the other end.



Using flat end of supplied Edge Trim Tool (ET1-0001), seat edge trim against flare by inserting straight end between edge trim and flare at one end. Next, slide around entire edge to the other end.



Installation Complete.

