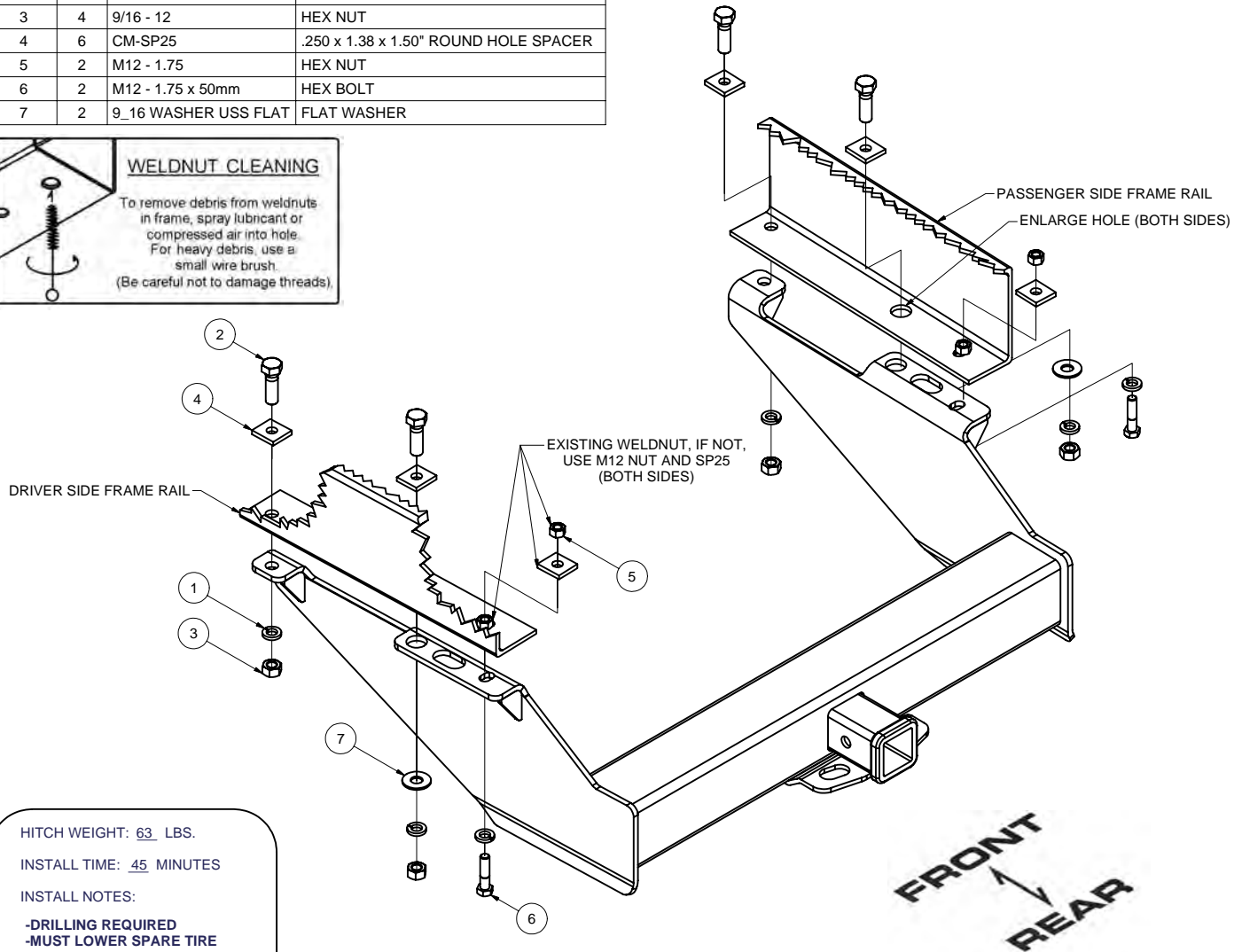
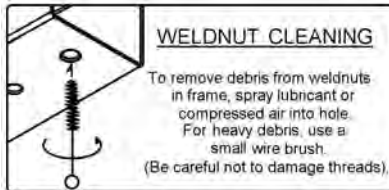


15015**88-98 CHEVY/GMC PICKUPS (WITH 36" FRAMES)****9/25/2009**

GROSS LOAD CAPACITY WHEN USED AS A WEIGHT CARRYING HITCH: 12,000 LBS. TRAILER WEIGHT & 1,200 LBS. TONGUE WEIGHT.
GROSS LOAD CAPACITY WHEN USED AS A WEIGHT DISTRIBUTION HITCH: 14,000 LBS. TRAILER WEIGHT & 1,400 LBS. TONGUE WEIGHT.

DO NOT EXCEED VEHICLE MANUFACTURER'S RECOMMENDED TOWING CAPACITY.

Parts List			
ITEM	QTY	PART NUMBER	DESCRIPTION
1	6	9/16	LOCK WASHER
2	4	9/16-12 x 2	HEX BOLT
3	4	9/16 - 12	HEX NUT
4	6	CM-SP25	.250 x 1.38 x 1.50" ROUND HOLE SPACER
5	2	M12 - 1.75	HEX NUT
6	2	M12 - 1.75 x 50mm	HEX BOLT
7	2	9_16 WASHER USS FLAT	FLAT WASHER



HITCH WEIGHT: 63 LBS.

INSTALL TIME: 45 MINUTES

INSTALL NOTES:

- DRILLING REQUIRED
- MUST LOWER SPARE TIRE

INSTALLATION STEPS

LOWER THE SPARE TIRE: The rear bolt in the bottom of the frame on each side must be removed, if equipped with factory step bumper. Use provided M12 bolt and nut if existing bolt and weldnut are present. Clean away any mud and undercoating if present. If not present use SP25, M12 fastener, and M12 nut.

- 1) The large cut outs in the hangers should clear rivets and cross member bolts.
- 2) Using the 9/16" x 2" grade 5 hardware and spacers provided, secure the receiver to existing round hole in frame on each side.

NOTE: Must enlarge middle 9/16" holes.

- 3) Torque all 9/16" fasteners to 112 ft-lb and M12 fasteners to 59 ft-lb. Raise spare tire back into position.
 PERIODICALLY CHECK THIS RECEIVER HITCH TO ENSURE THAT ALL FASTENERS ARE TIGHT AND THAT ALL STRUCTURAL COMPONENTS ARE SOUND.

Curt Manufacturing Inc., warrants this product to be free of defects in material and/or workmanship at the time of retail purchase by the original purchaser. If the product is found to be defective, Curt Manufacturing Inc., may repair or replace the product, at their option, when the product is returned, prepaid, with proof of purchase. Alteration to, misuse of, or improper installation of this product voids the warranty. Curt Manufacturing Inc.'s liability is limited to repair or replacement of products found to be defective, and specifically excludes liability for incidental or consequential loss or damage.