



E-6 Installation Instructions

**GROSS LOAD CAPACITY WHEN USED AS A WEIGHT CARRYING HITCH:
4,000 lbs. trailer weight & 400 lbs. tongue weight.**

DO NOT EXCEED VEHICLE MANUFACTURER'S RECOMMENDED TOWING CAPACITY!

CHECK ALL PARTS:

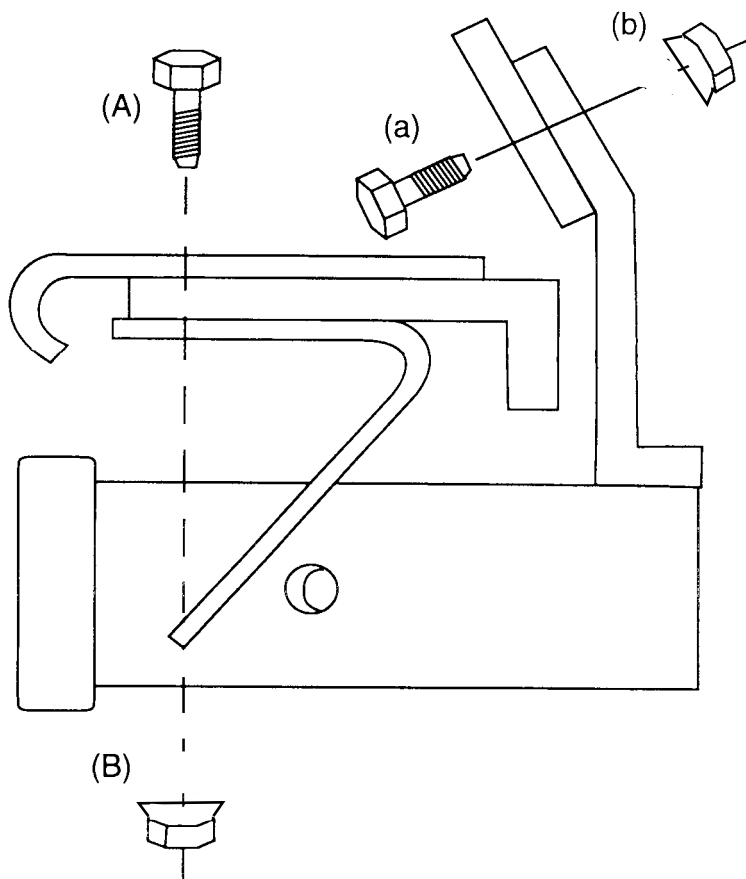
A (2) 3/4" x 2" Bolts

B (2) 3/4" Flange Nuts

a (1) 1/2" x 1 1/2" Bolts

b (1) 1/2" Flange Nuts

- 1) **Position Curt Hitch** to the underside of the bumper.
- 2) **Align the three 3/4" holes** in the hitch with the three holes in the CURT, GM style bumper, (as illustrated).
- 3) **Mark and drill** the license plate bracket using a 1/2" drill.
- 4) **Fasten the two holes** in the step bumper using (A) 3/4" x 2" bolts, (B) 3/4" Flange Nuts
- 5) **Fasten the license plate bracket** using the (a) 1/2" x 1 1/2" bolts, (b) 1/2" Flange Nuts.
- 6) **Tighten nuts securely.**



Curt Manufacturing Inc. warrants this product to be free of defects on material or workmanship at the time of retail purchase by the original purchaser. If the product is found to be defective, Curt Manufacturing Inc., may repair or replace the product, at their option, when product is returned, prepaid, with proof of purchase. Alteration to, misuse of, or improper installation of product voids this warrant. Curt Manufacturing Inc.'s liability is limited to repair or replacement of products found to be defective, and specifically excludes liability for incidental or consequential loss or damage.