



**AMERICAN
THUNDER**

4095_s Stainless Steel

Installation Instructions for:

SYSTEM #817642

2007-2010 CHEVY/GMC 2500HD & 3500HD TRUCKS

6.6L DURAMAX TURBO DIESEL ENGINE
(ALL EXCEPT STANDARD CAB / LONG BED)

07/18/13

Removal:

- 1) Raise the vehicle up on a hoist or rack to working height. If you do not have access to a hoist or rack, raise the vehicle and support securely with jack stands. Spray a penetrating lubricant onto the three bolts at the flanged connection behind the factory DPF unit and also the two rubber hangers that support the stock muffler and tailpipe.
- 2) Support the muffler with a stand and remove the three nuts at the flanged connection behind the DPF unit. Remove the two hangers on the muffler and tailpipe assembly from the rubber mounts on the vehicle. Slide the muffler and tailpipe forward, over the rear axle and remove from the vehicle.

Installation:

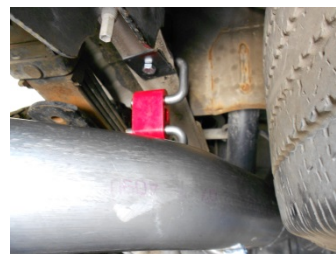
- 3) Using the 7/16" nuts, bolts and washers provided, bolt inlet pipe assembly **#702TBS** to the back of the mating flange on the exhaust system. Tighten securely.
- 4) Trim extension pipe **#46168S** if necessary, according to the following measurements before placing onto the back of inlet pipe **#702TBS**. Place the provided 4" clamp onto this connection and tighten enough to hold.

Crew Cab, Standard Bed, 153" Wheelbase Models: **Extension pipe 46168S not used.**

Extended Cab, Long Bed, 157.5" Wheelbase Models: **Trim 9.50" from 46168S.**

Crew Cab, Long Bed, 167" Wheelbase Models: **Do not trim 46168S, place directly onto 702TBS.**

- 5) On the drivers side frame rail near the back of the vehicle, next to the spare tire, there is a round hole in the bottom of the frame. Place the **466HA** over the hole with the round stock portion pointing to the outside of the vehicle. Use the **HA566** square plate as a backing plate under the frame and secure with the 3/8" bolt, nut and washers provided. Once secured, place a supplied HA168 rubber hanger onto the hanger mount as shown below.



6) On the passenger side of the vehicle just forward of the rear tire, there is an oval hole in the bottom of the frame. Place the **467HA** under the hole with the round stock portion pointing to the inside of the vehicle. Use the **HA566** square plate as a backing plate on top of the frame and secure with the 3/8" bolt, nut and washers provided. Once secured, place a supplied HA168 rubber hanger onto the hanger mount as shown below.



7) Place a supplied 4" clamp onto the inlet of muffler **#8540152-Z** and slide the muffler inlet fully onto the rear of pipe **#702TBS** or **46168S**. Check to see that the muffler is level and tighten enough to hold, but still allow for adjustment.

8) Place a supplied 4" clamp onto the right muffler outlet and then slide the front section of the right tailpipe **#46189S** into the muffler outlet. Connect the hanger on the pipe to the rubber mount installed in step 6 above and tighten the clamp on the muffler enough to hold but still allow for adjustment.

9) Place a 4" clamp onto the expanded end of pipe **#46191S** and place it over the rear axle and onto the back of the front section **#46189S**. Connect the hanger at the rear of the tailpipe to the rubber mount on the vehicle, be sure that the two pipes are fully slid together and tighten the clamp at the slip connection enough to hold, but still allow for adjustment.

10) Place a supplied 4" clamp onto the left muffler outlet, then slide the front section of the left tailpipe **#46190S** into the muffler outlet and connect the hanger on the pipe to the rubber mount on the vehicle. Tighten the clamp at the muffler outlet enough to hold but still allow for adjustment.

11) Place a 4" clamp onto the expanded end of pipe **#46192S** and place it over the rear axle and onto the back of the front section **#46190S**. Connect the hanger at the rear of the tailpipe to the rubber mount installed in step 5 above, be sure that the two pipes are fully slid together and tighten the clamp at the slip connection enough to hold, but still allow for adjustment.

12) Place a supplied clamp onto the slip fit of stainless tips **#ST475**. Place the tips onto the ends of the exit pipes and adjust to the desired position. Tighten the clamps enough to hold.

13) Adjust the position of all muffler, pipes and tips to provide a satisfactory fit. Maintain a minimum of 3/4" clearance between the Flowmaster system, the drivetrain and chassis components, while also keeping suspension travel and vibration in mind. Tighten down all clamped connections securely. After the system is secure, slide the 1/2" hanger keepers onto the ends of the hanger rods. This will prevent the hangers from slipping out of the rubber mounts. For a cleaner appearance and more secure installation, we highly recommend welding all slip-fit connections.

PACKING LIST

<u>Qty</u>	<u>Description</u>	<u>Part</u>
1	Flanged Inlet Pipe	702TBS
1	Extension Pipe	46168S
1	Muffler	8540152-Z
1	Right Tailpipe, Front	46189S
1	Left Tailpipe, Front	46190S
1	Right Tailpipe, Rear	46191S
1	Left Tailpipe, Rear	46192S
2	Stainless Tips	ST475
1	Parts Kit	PK745
1	Left Rear Frame Hanger	466HA
1	Right Front Frame Hanger	467HA
8	4" Band Clamps	MC400BS
2	Rubber Hanger	HA168
2	Back-up plate	HA566
3	7/16-14 x 1½" Bolt	HW224
3	7/16" Hex Nut	HW104
3	7/16" Lock Washer	HW310
2	3/8-16 x 1" Bolt	HW208
2	3/8" Hex Nut	HW103
2	3/8" Lock Washer	HW309
6	1/2" Hanger Keepers	HW503



Installation diagram for:
SYSTEM #817642
2007-2010 CHEVY/GMC 2500HD/3500HD TRUCKS
6.6L DURAMAX DIESEL ENGINE
(ALL EXCEPT STANDARD CAB / LONG BED)

AMERICAN THUNDER

409S Stainless Steel

