



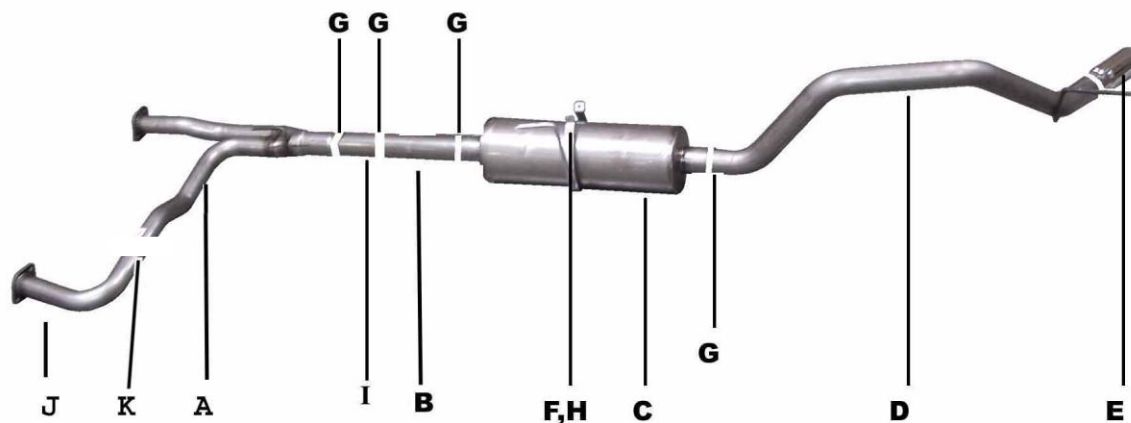
INSTRUCTION MANUAL

CAT-BACK SINGLE EXHAUST

NISSAN TITAN 5.6L 2WD

CREW CAB, LONG BED

PART # 12209



ITEM	PART #	QTY	DESCRIPTION
A	700550	1	2 ½" Y-PIPE W/ GP-110 FLANGE
B	700551	1	3" RESONATOR
C	788025	1	SUPERFLOW MUFFLER
D	700556	1	3" OVERAXLE TAILPIPE
E	500360	1	3-1/2" STAINLESS TIP
F	4323	1	BAND CLAMP
G	OHD300	4	3" CLAMP
H	BO-1015	1	BOLT KIT FOR BAND CLAMP
I	701091	1	3" EXTENSION PIPE
J	700550-1	1	Y-PIPE PIPE WITH GP110 FLANGE
K	5757	1	2.5" CLAMP

Thank you for purchasing our GIBSON EXHAUST SYSTEM for your vehicle. If you need further assistance, please do not hesitate to call our Technical Department at (800) 528-3044, Monday through Friday, 8:00 am to 5:00 PM

EXHAUST INSTALLATION #12209

When installing this exhaust system make sure to use proper safety precautions. Use jack stands when under the truck, set parking brake, block tires and use safety glasses and gloves.

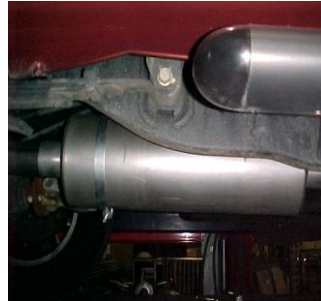
DO NOT WORK WITH HOT PIPES! PLEASE ALLOW EXHAUST TO COOL BEFORE REMOVAL.

SUGGESTED TOOLS:

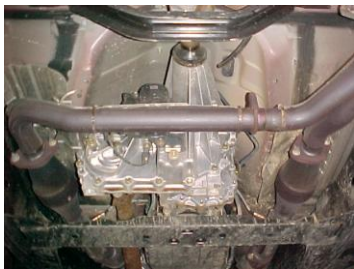
1/2", 9/16", 12MM/14MM/15MM Socket, WD-40, Jack Stand, Hacksaw or Sawzall



LAY OUT THE GIBSON EXHAUST ON THE FLOOR AND COMPARE PART #'S TO THE DRAWING. TO REMOVE YOUR FACTORY EXHAUST UN-BOLT YOUR TAILPIPE AT THE 2-BOLT FLANGE LOCATED BEHIND YOUR STOCK MUFFLER USE WD-40 TO AID YOU IN REMOVAL OF HANGERS FROM RUBBER GROMMETS. DO NOT DAMAGE THE GROMMETS, THEY WILL BE USED TO INSTALL THE NEW KIT NEXT, UN-BOLT YOUR EXHAUST FROM THE 2-BOLT FLANGES LOCATED JUST BEHIND YOUR FACTORY CATALYTIC CONVERTERS, DO NOT DISGUARD YOUR FACTORY GASKETS AND HARDWARE YOU WILL RE-USE IT.



INSTALL MUFFLER # C ONTO YOUR RESONATOR 1 1/2" -2". USE CLAMP # G TO SECURE MUFFLER TO THE PIPE, DO NOT TIGHTEN.



INSTALL BAND CLAMP # F ONTO MUFFLER, INSERT HANGER INTO RUBBER GROMMET, USE BOLT KIT PROVIDED, DO NOT TIGHTEN.



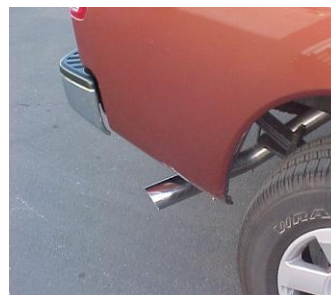
INSTALL Y-PIPE # A & J ONTO STOCK FLANGES USE YOUR STOCK HARDWARE TO SECURE. USE CLAMP #K TO SECURE #A & J. DO NOT TIGHTEN. INSERT WELDED HANGER INTO RUBBER



INSTALL OVERAXLE TAILPIPE # D INTO MUFFLER 1 1/2"-2" INSERT WELDED HANGER INTO RUBBER GROMMET USE CLAMP # G TO SECURE PIPE TO MUFFLER.



INSTALL EXTENSION PIPE #I ONTO HEADPIPE. INSERT WELDED HANGER INTO RUBBER GROMMET. USE CLAMP #G TO SECURE. DO NOT TIGHTEN.



INSTALL YOUR STAINLESS TIP TO YOUR DESIRED LOOK. NOW GO BACK AND TIGHTEN ALL YOUR FLANGES, CLAMPS, ETC. STARTING FROM THE FRONT AND WORKING YOUR WAY BACK. TO CLEAN YOUR STAINLESS TIP USE A STAINLESS CLEANER AND A SCOTCH BRITE PAD. AFTER 20-25 MILES CHECK AND RETIGHTEN ALL FASTENERS IN NESERSARY.

NEXT, INSTALL RESONATOR # B 1 1/2"-2" ONTO Y-PIPE USE CLAMP # G TO SECURE PIPES TOGETHER, DO NOT TIGHTEN.

INSTALL EXTENSION PIPE #I ONTO HEADPIPE INSERT WELDED HANGER INTO RUBBER GROMMET USE CLAMP #G TO SECURE. DO NOT TIGHTEN.

MAKE SURE YOU HAVE A 1" CLEARANCE ON ALL RUBBER BRAKE LINES, SHOCK BOOTS, TIRES, FUEL LINES AND BODY PANELS TO PREVENT DAMAGE OR FIRE.