



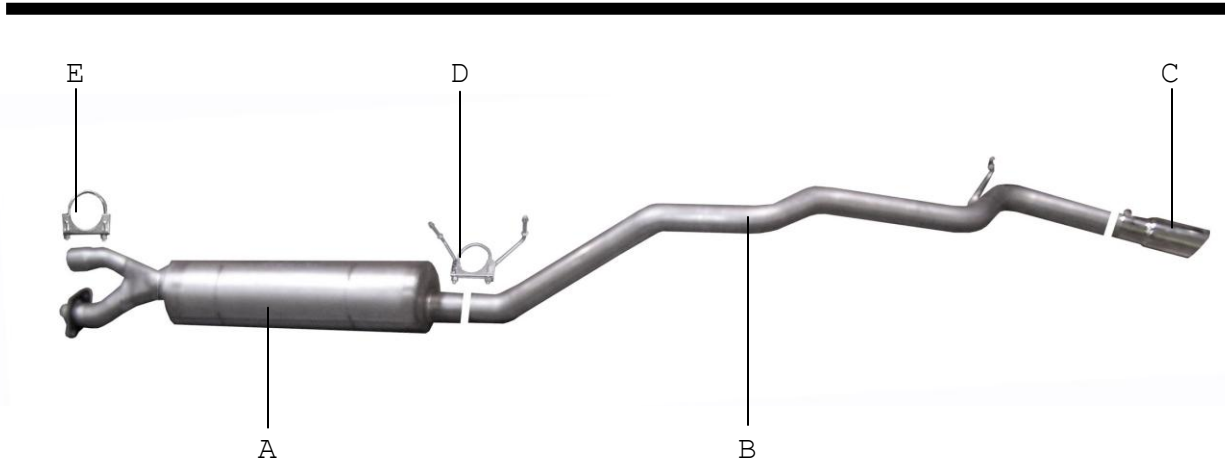
INSTRUCTION MANUAL

CAT-BACK SINGLE EXHAUST

FORD EXPLORER/MOUNTAINER

4.0L SOHC 4DR 2/4WD

PART # 19687



ITEM	PART #	QUANTITY	DESCRIPTION
A	788500-5	1	MUFFLER ASSEMBLY W/FLANGE #GP-110
B	700296	1	2-1/2" OVERAXLE TAILPIPE
C	500361	1	3" STAINLESS TIP
D	4135	1	REAR MUFFLER HANGER
E	5756	1	2-1/4" CLAMP

**DUAL INLET MUFFLER W/SLIP FLANGE.
WILL NOT FIT WITH RELOAD LEVELING SUSPENSION**

Thank you for purchasing our GIBSON EXHAUST SYSTEM for your vehicle. If you need further assistance, please do not hesitate to call our Technical Department at (800) 528-3044, Monday through Friday, 8:00 AM to 5:00 PM.

EXHAUST INSTALLATION INSTRUCTIONS KIT# 19687

WHEN INSTALLING THIS EXHAUST SYSTEM MAKE SURE TO USE ALL THE PROPER SAFETY PRECAUTIONS. USE JACK STANDS WHEN UNDER TRUCK, SET PARKING BRAKE, BLOCK TIRES AND USE SAFETY GLASSES. DO NOT WORK WITH HOT PIPES!

SUGGESTED TOOLS:

15MM WRENCH & SOCKET, 9/16" SOCKET & WRENCH, 1/2" SOCKET, WRENCH, JACKSTAND

**YOU WILL RE-USE THE FACTORY FLANGE GASKET!!!
DO NOT DAMAGE WHEN REMOVING STOCK EXHAUST SYSTEM!!!**

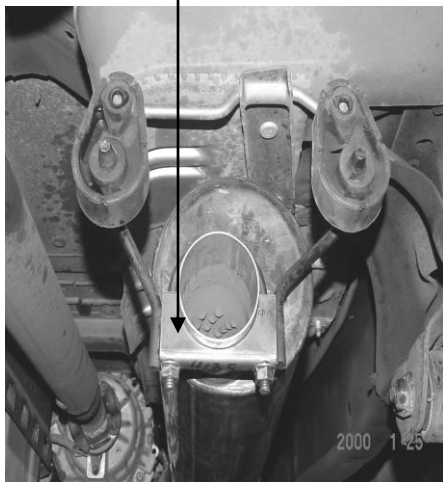


LAYOUT THE GIBSON EXHAUST AND COMPARE PART NUMBERS TO THE PIPE NUMBERS. FOR EASY REMOVAL, CUT THE STOCK TAILPIPE BEHIND THE MUFFLER AND ALSO BEHIND THE AXLE. NOW UNBOLT THE STOCK FLANGE AND REMOVE THE STOCK MUFFLER. **DO NOT DAMAGE THE FACTORY GASKET BECAUSE YOU WILL RE-USE IT.** INSTALL MUFFLER ASSEMBLY ONTO THE STOCK FLANGE REUSING THE FACTORY GASKET AND BOLTS. DO NOT TIGHTEN!!



NOW GO BACK AND TIGHTEN THE FLANGE AT THE CATALYTIC CONVERTER AND HANGER #B. MAKE SURE EVERYTHING IS TIGHT. ALSO, MAKE SURE YOU HAVE AT LEAST 1" CLEARANCE ON ALL PIPES FROM ALL RUBBER BRAKE LINES, SHOCK BOOTS, TIRES, ETC. YOU MAY NEED TO LOOSEN THE SPARE TIRE AND PUSH IT TO THE DRIVER SIDE FOR CLEARANCE PURPOSES.

HANGER #B



NEXT, INSTALL O.E REAR HANGER #B. DO NOT TIGHTEN. INSTALL TAILPIPE, WHEN INSTALLING THE TAILPIPE YOU WILL NEED TO JACK THE BODY OF THE VEHICLE UP TO SLIDE THE TAILPIPE THROUGH THE LEAF SPRING AND THE BOTTOM OF THE FRAME. ALSO THE SHOCK IN FRONT OF THE AXLE MAY NEED TO BE DISCONNECTED AND LOWERED TO SLIP THE TAIL PIPE IN.



FINALLY, INSTALL THE GIBSON STAINLESS TIP TO THE DESIRED LOOK. USE ANY ALUMINUM OR STAINLESS STEEL CLEANER TO POLISH YOUR STAINLESS STEEL TIP.

"MAKE SURE THERE IS A MINIMUM OF A 1" CLEARANCE ON ALL RUBBER BRAKE LINE'S, TIRES, SHOCKS, SPARE TIRE, ETC."