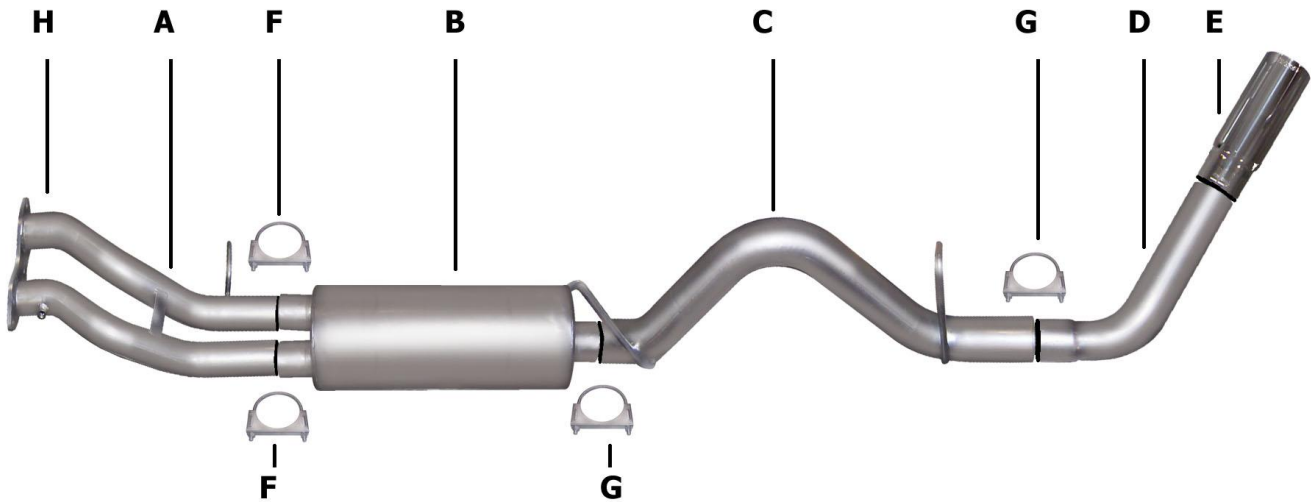




PERFORMANCE EXHAUST SYSTEMS

**INSTRUCTION MANUAL**  
**CAT-BACK SINGLE EXHAUST SYSTEM**  
**DENALI, TAHOE, YUKON 5.7L 4 DR 2/4WD**  
**ESCALADE 5.7L 4 DR 2/4WD**  
**PART # 315508**



ITEM	PART #	QTY	DESCRIPTION
A	500611	1	HEADPIPE W/FLANGE #GP-96
B	758250	1	SUPERFLOW DUAL MUFFLER
C	500612	1	3" OVERAXLE TAILPIPE
D	50032R-6	1	3" EXIT PIPE
E	500360	1	3-1/2" STAINLESS STEEL TIP
F	5757	2	2-1/2" CLAMP
G	OHD300	2	3" CLAMP
H	9681	1	CONVERTER FLANGE GASKET

**STOCK DUAL INLET MUFFLER.**

Thank you for purchasing our GIBSON EXHAUST SYSTEM for your vehicle. If you need further assistance, please do not hesitate to call our Technical Department at 1-800-528-3044, Monday through Friday, 8:00 am to 5:00 pm.

# EXHAUST INSTALLATION #315508

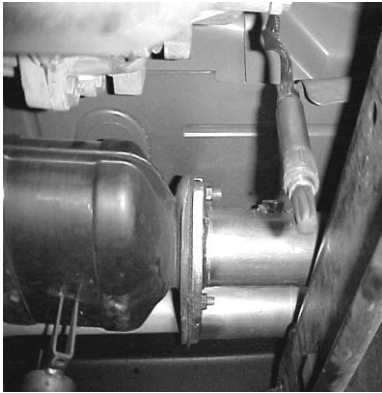
WHEN INSTALLING THIS EXHAUST SYSTEM MAKE SURE TO USE ALL THE PROPER SAFETY PRECAUTIONS. USE JACK STANDS WHEN UNDER TRUCK. SET PARKING BRAKE, BLOCK TIRES AND USE SAFETY GOGGLES.

**DO NOT WORK WITH HOT PIPES!**

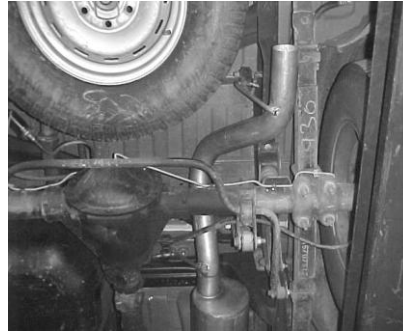
## SUGGESTED TOOLS:

15MM SOCKET, 9/16" SOCKET, 1/2" SOCKET, 1/2" WRENCH, JACKSTAND, HACKSAW, WD-40, ANTI-SEIZE, HIGH TEMP O2 SENSOR SAFE GASKET SEALER

## LAYOUT THE EXHAUST AND MATCH PART NUMBERS TO THE DRAWING.



REMOVE O2 SENSOR FROM STOCK HEAD PIPE AND UN-BOLT STOCK HEAD-PIPE. STOCK NUTS AND BOLTS WILL BE RE-USED. CUT STOCK EXHAUST JUST BEHIND THE MUFFLER FOR EASIER REMOVAL. LEAVE ALL RUBBER GROMMETS IN PLACE. FOR EASIER REMOVAL OF HANGERS SPRAY WD-40 TO AID YOU IN REMOVING THEM.



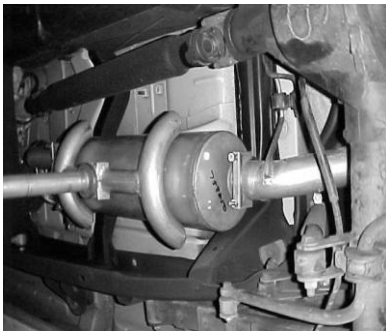
INSTALL THE OVERAXLE TAILPIPE #C INTO MUFFLER AT LEAST 1 1/2" TO 2" USING CLAMP #G. DO NOT TIGHTEN. INSERT WELDED HANGERS INTO RUBBER GROMMETS. THE SPARE TIRE ON SOME VEHICLES MAY NEED TO BE LOOSENED AND PULLED TO THE DRIVER SIDE AND RE-TIGHTENED. ROTATE PIPES UNTIL YOU HAVE AT LEAST A 1" CLEARANCE AWAY FROM ALL SHOCKS AND LEAF SPRINGS.



BOLT HEADPIPE #A USING SUPPLIED FLANGE GASKET #H AND REUSING FACTORY BOLTS. APPLY A SMALL AMOUNT OF HIGH-TEMP O2 SENSOR SAFE SILICONE ON THE FLANGE TO PREVENT ANY LEAKS. INSERT WELDED HANGER INTO RUBBER GROMMET. DO NOT TIGHTEN



INSTALL TURNOUT PIPE #D INTO TAILPIPE USING CLAMP #G. INSTALL THE STAINLESS TIP. AND CLAMP DOWN. USE ANY STAINLESS STEEL OR ALUMINUM CLEANER TO POLISH TIP. DENALI & ESCALADE- YOU MAY NEED TO CUT 2" OFF THE REAR OF THE OVERAXLE PIPE SO THE TIP WILL BE CENTER WITH THE CUTOUT.



SLIDE MUFFLER #B WITH DUAL INLET ONTO HEADPIPE AT LEAST 1-1/2" TO 2". MUFFLER OUTLET SHOULD BE AT THE 12 O'CLOCK POSITION. USE CLAMPS #F TO ATTACH IT TO THE HEADPIPE. MAKE SURE INLETS AND MUFFLER IS LEVEL. USE JACK STAND TO SUPPORT MUFFLER. DO NOT TIGHTEN.



RE-INSTALL O2 SENSOR. USE A SMALL AMOUNT ANTI- SEIZE ON THE THREADS. NOW FIRMLY TIGHTEN ALL CLAMPS, HANGERS, FLANGE, AND BOLTS

**MAKE SURE YOU HAVE A 1" CLEARANCE AWAY FROM ALL FUEL LINES, BRAKE LINES, SHOCKS, TIRES, PIPES, ETC...**