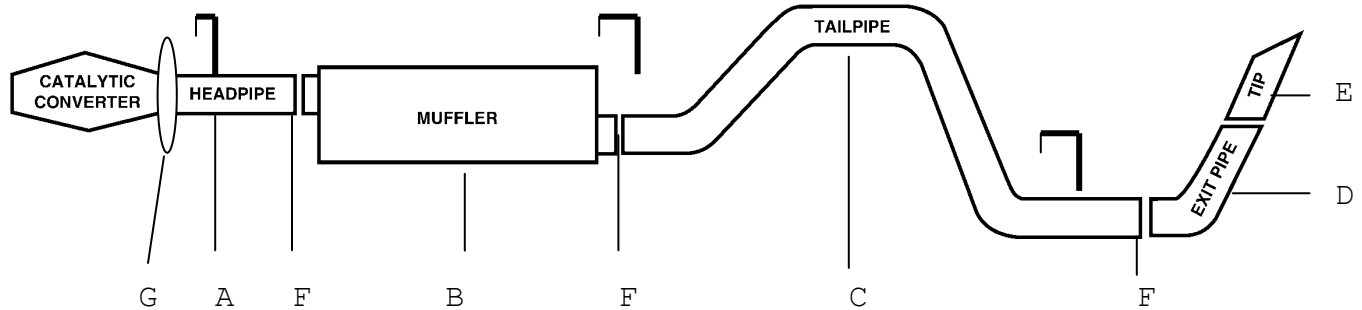




INSTRUCTION MANUAL

CAT-BACK SINGLE EXHAUST
CHEVY SUBURBAN 5.7L 2/4WD 4DR.

PART # 315517



ITEM	PART #	QTY	DESCRIPTION
A	70020	1	HEADPIPE WITH FLANGE #GP-305
B	788824	1	SUPERFLOW MUFFLER
C	500613	1	3" OVERAXLE TAILPIPE
D	50032R-2	1	3" EXIT PIPE
E	500360	1	3-1/2" STAINLESS TIP
F	OHD300	3	3" CLAMP
G	9688	1	FLANGE GASKET

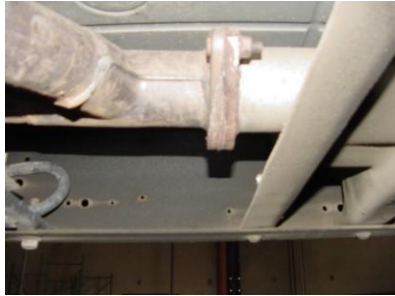
Thank you for purchasing our GIBSON EXHAUST SYSTEM for your vehicle. If you need further assistance, please do not hesitate to call our Technical Department at (800) 528-3044, Monday through Friday, 8:00 am to 5:00 pm.

INSTALLATION INSTRUCTIONS PART #315517

WHEN INSTALLING THIS EXHAUST SYSTEM, MAKE SURE TO USE PROPER SAFETY PRECAUTIONS. USE JACK STANDS WHEN UNDER THE VEHICLE, SET PARKING BRAKE, BLOCK TIRES, AND USE SAFETY GLASSES AND GLOVES. **DO NOT WORK WITH HOT PIPES!**

SUGGESTED TOOLS

9/16", 15MM, 1/2" SOCKET AND WRENCH, JACKSTANDS, HACKSAW, WD-40



TO REMOVE STOCK EXHAUST UN-BOLT THE FACTORY FLANGE LOCATED IN FRONT OF THE MUFFLER. **DO NOT THROW AWAY THE STOCK BOLTS AND NUTS. YOU WILL RE-USE THEM.** LEAVE ALL RUBBER GROMMETS IN PLACE. USE WD-40 TO AID IN REMOVAL OF THE STOCK EXHAUST AND HANGERS.



SLIDE OVERAXLE TAILPIPE #C INTO MUFFLER 1-1/2" TO 2". INSERT WELDED HANGERS INTO RUBBER GROMMET. USE CLAMP #F TO SECURE TAILPIPE TO THE MUFFLER. DO NOT TIGHTEN. NOTE: THE LONGER OF THE TWO HANGERS GOES IN THE GROMMET LOCATED JUST BEHIND THE MUFFLER.



INSTALL HEADPIPE #A USING GASKET #G AND RE-USING THE STOCK NUTS AND BOLTS. DO NOT TIGHTEN. INSERT WELDED HANGER INTO RUBBER GROMMET.



INSTALL EXIT PIPE #D ONTO THE TAILPIPE. ROTATE UNTIL IT IS LEVEL. USE CLAMP #F TO SECURE THE EXIT PIPE TO THE TAILPIPE. DO NOT TIGHTEN.



INSTALL MUFFLER #B ONTO HEADPIPE WITH INLET TOWARDS THE MOTOR. INLET OF MUFFLER IS LOOKING INTO THE LOUVERS. THE MUFFLER OUTLET SHOULD BE AT THE 4 O'CLOCK POSITION. USE CLAMP #F TO SECURE THE MUFFLER TO THE HEADPIPE. MUFFLER INLET IS LOOKING AT THE LOUVERS. DO NOT TIGHTEN.



INSTALL THE STAINLESS TIP. TO CLEAN TIP USE ANY STAINLESS CLEANER. NOW GO BACK AND TIGHTEN ALL CLAMPS, NUTS AND BOLTS STARTING FROM THE FRONT AND WORKING BACK.

MAKE SURE YOU HAVE A 1" CLEARANCE FROM ALL PIPES, BRAKE AND FUEL LINES, TIRES, SHOCKS, ETC...