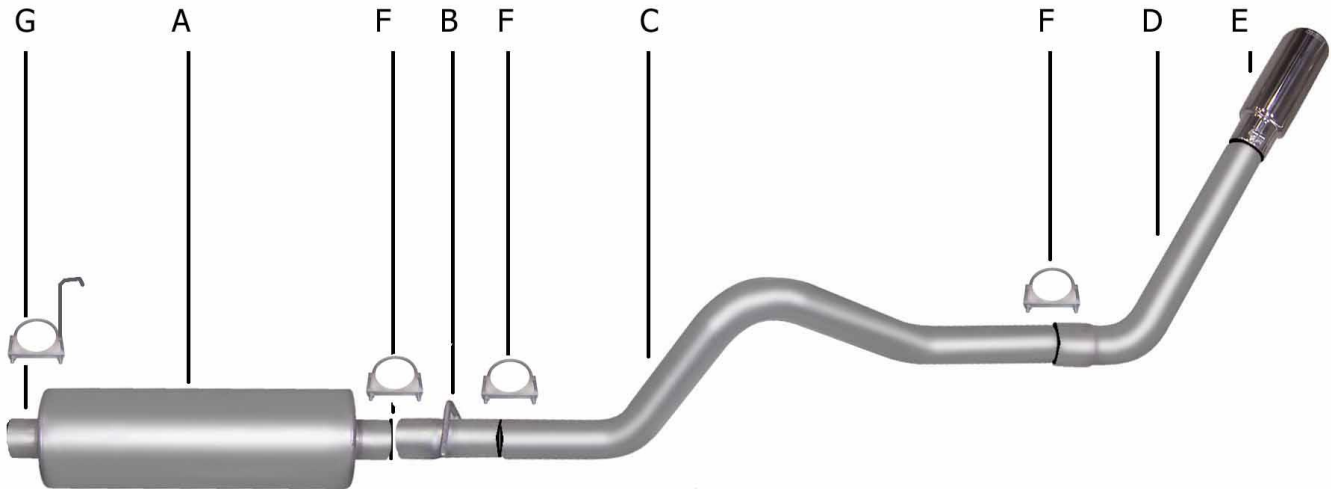




PERFORMANCE EXHAUST SYSTEMS

INSTRUCTION MANUAL
CAT-BACK SINGLE EXHAUST
Dodge Cummins 5.9L Turbo Diesel Truck
Standard, Extended, Crew Cab
PART # 316576



ITEM	PART #	QUANTITY	DESCRIPTION
A	788025	1	3.00" Superflow Muffler
B	700720	1	3.00" Rear Extension Pipe
C	50030R	1	3.00" Overaxle Tailpipe
D	700721	1	3.00" Turnout Tailpipe
E	500379	1	4.00" Stainless Steel Tip
F	OHD300	3	3.00" Clamp
G	4252	1	O.E. Hanger

Thank you for purchasing our GIBSON EXHAUST SYSTEM for your vehicle. If you need further assistance, please do not hesitate to call our Technical Department at (800) 528-3044, Monday through Friday, 8:00 AM to 5:00 PM.

EXHAUST INSTALLATION #316576

WHEN INSTALLING THIS EXHAUST SYSTEM, MAKE SURE TO USE PROPER SAFETY PRECAUTIONS. USE JACK STANDS WHEN UNDER TRUCK, SET PARKING BRAKE, BLOCK TIRES, AND USE SAFETY GLASSES AND GLOVES. **DO NOT WORK WITH HOT PIPES!**

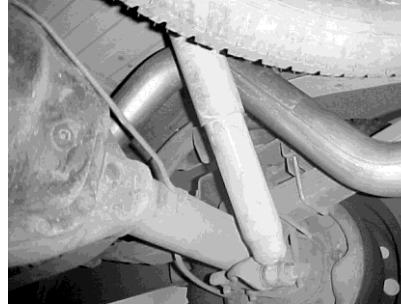
SUGGESTED TOOLS:

9/16" SOCKET, 15MM SOCKET, 1/2" WRENCH, 1/2" SOCKET, JACK STAND, WD-40, HACKSAW

LAY OUT THE GIBSON EXHAUST SO IT LOOKS LIKE THE DRAWING AND COMPARE THE PART NUMBERS.



Lay out the exhaust on the floor so it looks like the drawing and compare the parts with the manual. Leave all rubber grommets in place. Use WD-40 to aid in removal.

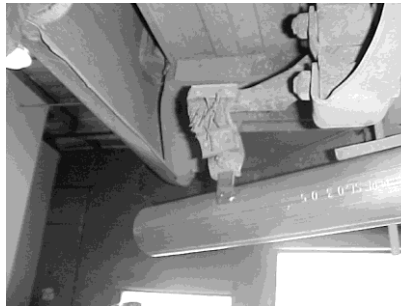


Install rear extension pipe #B and connect to muffler using clamp #F. Install over-axle tailpipe #C to extension pipe and attach using clamp #F.

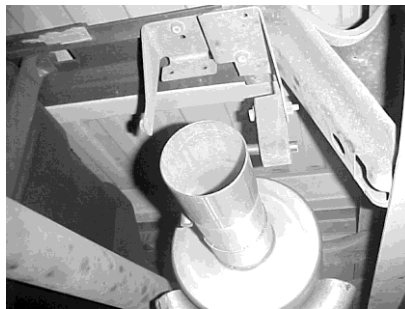


Remove & cut stock exhaust at the first connection approximately 12" in front of your stock muffler. Use jack stands to support converter.

Install hanger #G .



Slide turn out pipe #D on the tailpipe behind the rear tire, & hook to your existing hanger. Roll turnout pipe until you have it at the correct angle for your truck and connect with clamp #F.



Slide muffler #A with inlet towards the converter onto your stock front extension pipe. Use a jack stand to support the muffler and connect with hanger #G but do not tighten. Muffler inlet is looking into the louvers.



Install your Stainless Steel tip and clamp down. When you have everything in place *, firmly tighten all your hardware and clamps securely down. To clean your stainless steel tips, use a stainless cleaner and polish.

*** MAKE SURE YOU HAVE AT LEAST A 1" CLEARANCE ON ALL PIPES FROM ALL RUBBER BRAKE LINES, FUEL LINES, SHOCK BOOTS, TIRES, ETC**