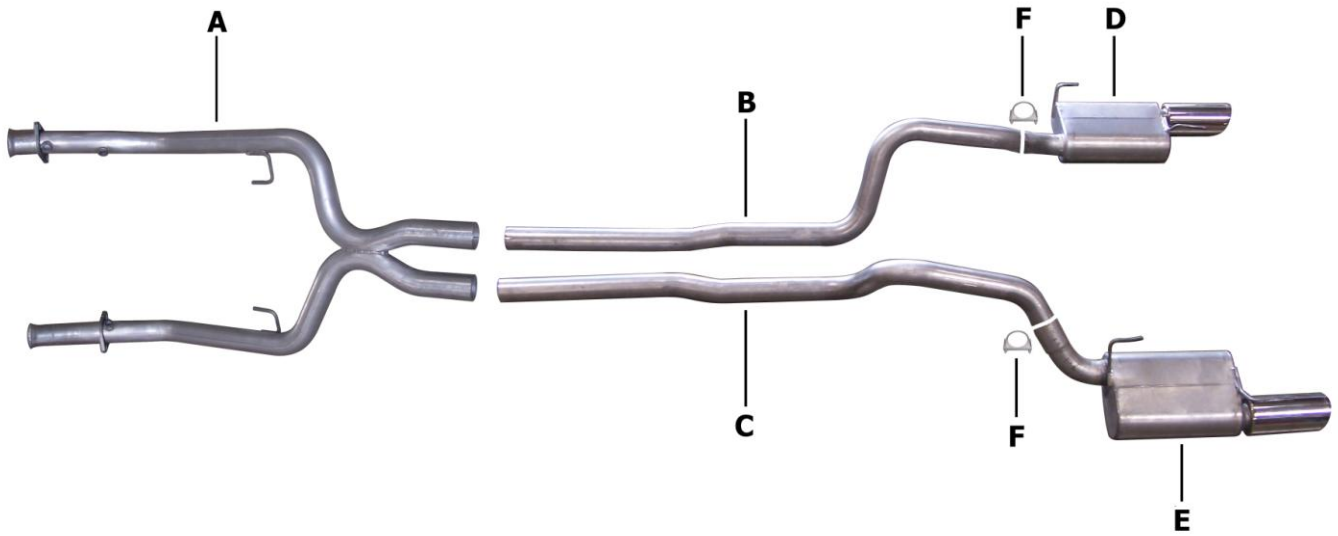




Installation Instructions

Cat-Back Dual Exhaust with Crossover X Pipe
Ford Mustang GT, 4.6L

Part #319007



ITEM	PART	QUANTITY	DESCRIPTION
A	700937	1	2.5" Crossover X Pipe
B	700938	1	2.5" Passenger side tailpipe
C	700939	1	2.5" Driver side tailpipe
D	700802	1	Passenger side muffler assembly w/ 4" intercooled tip
E	700801	1	Driver side muffler assembly w/ 4" intercooled tip
F	5757	2	2.5" Clamp

Thank you for purchasing our Gibson Exhaust System for your vehicle.
If you need further assistance, please do not hesitate to call our technical department at
(800) 528 -3044 Monday through Friday, 8am to 5 pm.

Installation Instructions #319007

When installing this exhaust system make sure to use proper safety precautions. Use jack stands when working under the vehicle, set parking brake, block tires and use safety glasses and gloves. Allow exhaust to cool before attempting installation. Severe injury or burns could occur if safety measures are not taken.

SUGGESTED TOOLS: 1/2", 9/16", 15mm wrenches & sockets, WD-40, hacksaw, jack stands

1. Disconnect the negative battery cable before removal of OEM exhaust. This will allow the computer to reset and recognize the new exhaust. Lay out the exhaust on the floor so it looks like the drawing and compare parts with manual.



2. To remove your stock exhaust, unbolt the clamps by your rear mufflers using a 15mm wrench or socket.



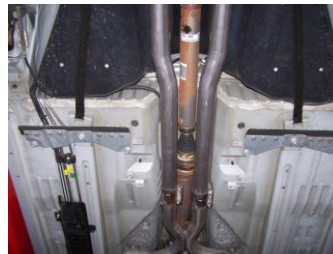
6. Now install the passenger side muffler assembly #C by sliding the metal hangers into the rubber grommets. Then do the same for the driver side muffler assembly #D.



3. Loosen up the 2 clamps in the middle of the vehicle and slide them over the tailpipes. Now separate both tailpipes from mufflers and slide them out. Next remove the stock mufflers by sliding them out of the stock rubber grommets.



4. Now disconnect all 3 sensors on the stock h-pipe with a 22mm wrench. Once you have done that, then unbolt the flanges at the stock manifolds and slide h-pipe out of rubber grommets. Save all stock hardware and clamps. You will re-use them later.



7. Install the passenger side tailpipe #B into muffler assembly using clamp #E to secure. Do not tighten. Now do the same procedure for the driver side tailpipe. Use clamp #E to secure the tailpipe to the muffler assembly. Now use the stock clamps to secure the tailpipes to the X Pipe.



5. Now install the Gibson X Pipe by bolting it up to the stock manifolds using the stock hardware. Insert welded hangers into rubber grommets. Do not tighten the flanges at the manifolds. Now insert all 3 sensors into the X Pipe.



8. When you have everything in place, firmly tighten all bolts and clamps down securely. Use stainless steel cleaner and a Scotch Brite pad weekly to prevent tip from discoloration. Inspect all fasteners after 25-50 miles of operation and re-tighten as necessary.

GIBSON EXHAUST systems are designed on a factory stock vehicle. Any aftermarket products installed could increase the sound levels of the exhaust. **Make sure there is a 1" clearance from ALL rubber brake lines, shock boots, lines, tires, etc. to prevent heat related damage or fire.**