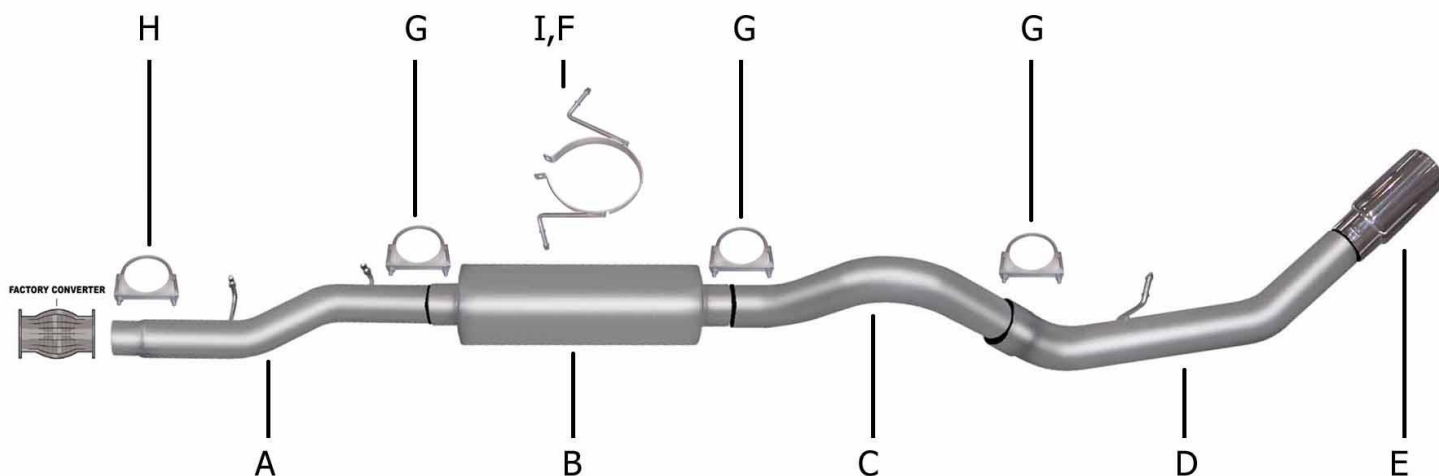




PERFORMANCE EXHAUST SYSTEMS

**INSTALLATION INSTRUCTIONS  
CAT BACK SINGLE EXHAUST  
FORD F250/F350 SUPERDUTY TRUCK  
6.0L POWER STROKE DIESEL 2/4WD  
EXTENDED CAB, LONG BED  
PART # 319612**



ITEM	PART #	QUANTITY	DESCRIPTION
A	700531	1	4" Headpipe w/welded hangers
B	788040	1	Superflow muffler
C	700489	1	4" Over axle tailpipe
D	700490	1	4" Exit pipe
E	500401	1	5" Stainless tip
F	4217	1	Band clamp
G	4171	3	4" Clamp
H	4170	1	3½" Clamp
I	BO-1015	1	Bolt kit for band clamp

**WILL NOT FIT WITH CENTER MOUNTED FUEL TANK.**

**Thank you for purchasing our Gibson exhaust system for your vehicle. If you need further assistance, please do not hesitate to call our technical dept at (800) 528-3044 Monday through Friday, 8:00 am to 5:00 pm.**

# INSTALLATION INSTRUCTIONS #319612

## CAREFULLY READ INSTRUCTIONS BEFORE STARTING INSTALLATION.

When installing this exhaust system make sure to use proper safety precautions. Use jack stands when working under the vehicle, set parking brake, block tires and use safety glasses and gloves. Allow exhaust to cool before attempting installation. Severe injury or burns could occur if safety measures are not taken.

**SUGGESTED TOOLS:** 1/2", 9/16" 15mm wrenches & sockets, WD-40, hacksaw, jack stands.

.....  
**Disconnect the negative battery cable before removal of OEM exhaust. This will allow the computer to reset and recognize the new exhaust. Lay out the exhaust on the floor so it looks like the drawing and compare parts with manual.**  
.....



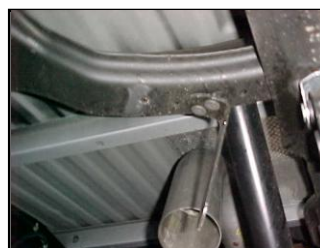
**1.** To remove the stock exhaust disengage the welded hangers using WD-40 from the OEM rubber grommets. Do not damage or remove the rubber grommets as you will re-use them to mount your new system. Now, cut off tailpipe and remove exhaust.



**5.** Install the over axle tailpipe #C into the muffler 1½-2" and secure with clamp #G. DO NOT TIGHTEN.



**2.** Install headpipe #A onto your catalytic converter and attach with clamp #H. Use a jack stand to support the converter. DO NOT TIGHTEN. Insert welded hangers into rubber grommets.



**6.** Remove the spare tire. On the passenger side rotate the bracket that holds the spare tire 180 degrees and re-install spare tire.



**3.** Install band clamp #F into rubber grommets located above the axle and attach bolt kit #I. DO NOT TIGHTEN.



**7.** Install the exit pipe #D onto the over axle tailpipe and secure with clamp #G. DO NOT TIGHTEN. Insert welded hanger into rubber grommet



**4.** Install muffler #B onto headpipe 1½-2" with the louvers facing the converter. Secure with clamp #G. DO NOT TIGHTEN. Use a jack stand to support the muffler.



**8.** Install stainless steel tip #E. Clamp down. When you have everything in place, firmly tighten all bolts and clamps down securely. Use stainless steel cleaner and a Scotch Brite pad weekly to prevent tip from discoloration.