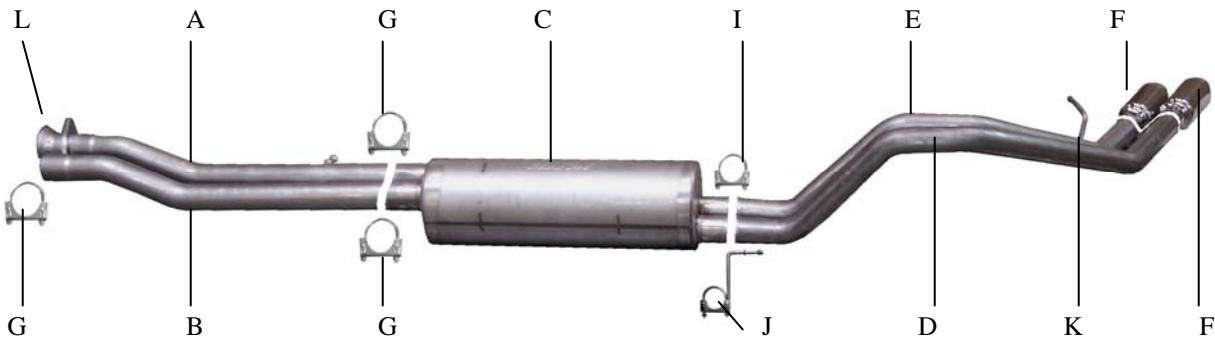




INSTRUCTION MANUAL
CAT BACK DUAL SPORT EXHAUST
02-06 CADILLAC ESCALADE EXT
CREW CAB, SHORT BED
6.0L, AWD, 4 DR
PART# 5606



ITEM	PART#	QTY	DESCRIPTION
A	700508	1	2.5" PASS. SIDE HEADPIPE W/ FLANGE GP-105
B	700509	1	2.5" DRIVER SIDE HEADPIPE
C	788701	1	SUPERFLOW MUFFLER
D	700510	1	2-1/4" DRIVER SIDE TAILPIPE W/HANGER
E	700511	1	2-1/4" PASSENGER SIDE TAILPIPE
F	500395	2	3 1/2" STAINLESS STEEL TIPS
G	5757	3	2.5" CLAMP
I	5756	1	2 1/4" CLAMP
J	4208	1	REAR MUFFLER HANGER
K	BO-906	1	BOLT KIT FOR TAILPIPES
L	BO-1028	1	BOLT KIT FOR HEADPIPE FLANGE

THANK YOU FOR PURCHASING OUR GIBSON EXHAUST SYSTEM FOR YOUR VEHICLE. IF YOU NEED FURTHER ASSISTANCE, PLEASE DO NOT HESITATE TO CALL OUR TECHNICAL DEPARTMENT AT (800) 528-3044, MONDAY – FRIDAY, 8:00 AM TO 5:00 PM.
 1104

INSTALLATION INSTRUCTIONS PART# 5606

WHEN INSTALLING THIS EXHAUST SYSTEM, MAKE SURE TO USE PROPER SAFETY PRECAUTIONS. USE JACK STANDS WHEN UNDER THE TRUCK, SET PARKING BRAKE, BLOCK TIRES AND USE SAFETY GLASSES AND GLOVES.

DO NOT WORK WITH HOT PIPES!

SUGGESTED TOOLS:

15MM SOCKET & WRENCH, 9/16", 7/16", 1/2" SOCKETS & WRENCH, JACK STAND, WD-40, HACKSAW

LAY OUT THE EXHAUST AND COMPARE PART NUMBERS WITH THE DRAWING.



TO REMOVE STOCK EXHAUST CUT YOUR STOCK TAILPIPE OFF, REMOVE HANGERS FROM RUBBER GROMMETS, USE WD-40 TO HELP WITH REMOVAL. NOW UN-BOLT YOUR FACTORY EXHAUST AT THE FLANGES LOCATED JUST AFTER YOUR Y-PIPE.



INSTALL PASSENGER SIDE OVERAXLE TAILPIPE # E INTO MUFFLER 1-1/2" TO 2". INSERT WELDED HANGER INTO RUBBER GROMMET. USE CLAMP # I TO SECURE PIPE TO MUFFLER. DO NOT TIGHTEN.



BOLT PASSENGER SIDE HEADPIPE # A USING HARDWARE KIT # L. DO NOT TIGHTEN. INSERT HANGER INTO RUBBER GROMMET, NEXT SLIP DRIVER SIDE HEADPIPE # B ONTO FACTORY PIPE USE CLAMP # G TO SECURE. DO NOT TIGHTEN.



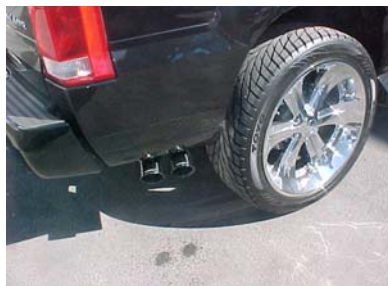
INSTALL DRIVERS SIDE OVERAXLE TAILPIPE # D INTO MUFFLER 1-1/2" TO 2". ATTACH TO MUFFLER OUTLET USING HANGER # J. USE BOLT KIT # K TO ATTACH BOTH TAILPIPES TOGETHER DRIVERS SIDE TAB WILL BE ON THE BOTTOM.



NEXT INSTALL MUFFLER #C. SLIDE IT ONTO HEADPIPE 1-1/2" TO 2". ATTACH TO HEADPIPE WITH CLAMP # G. INLET OF MUFFLER SHOULD FACE TOWARDS THE MOTOR. INSTALL REAR MUFFLER HANGER #J INTO RUBBER GROMMET LOCATED JUST ABOVE THE DRIVERS SIDE OUTLET OF THE MUFFLER. SLIDE CLAMP ONTO MUFFLER OUTLET. INLET OF MUFFLER IS LOOKING INTO THE LOUVERS. DO NOT TIGHTEN.



INSTALL YOUR STAINLESS STEEL TIPS. TO CLEAN TIPS USE ANY STAINLESS OR ALUMINUM CLEANER AND A SCOTCH BRITE PAD. NOW GO BACK AND TIGHTEN ALL NUTS, BOLTS AND CLAMPS STARTING FROM THE FRONT AND WORKING BACK.



“MAKE SURE YOU HAVE A 1” CLEARANCE ON ALL PIPES FROM BRAKE AND FUEL LINES, TIRES, SHOCKS, ETC...”