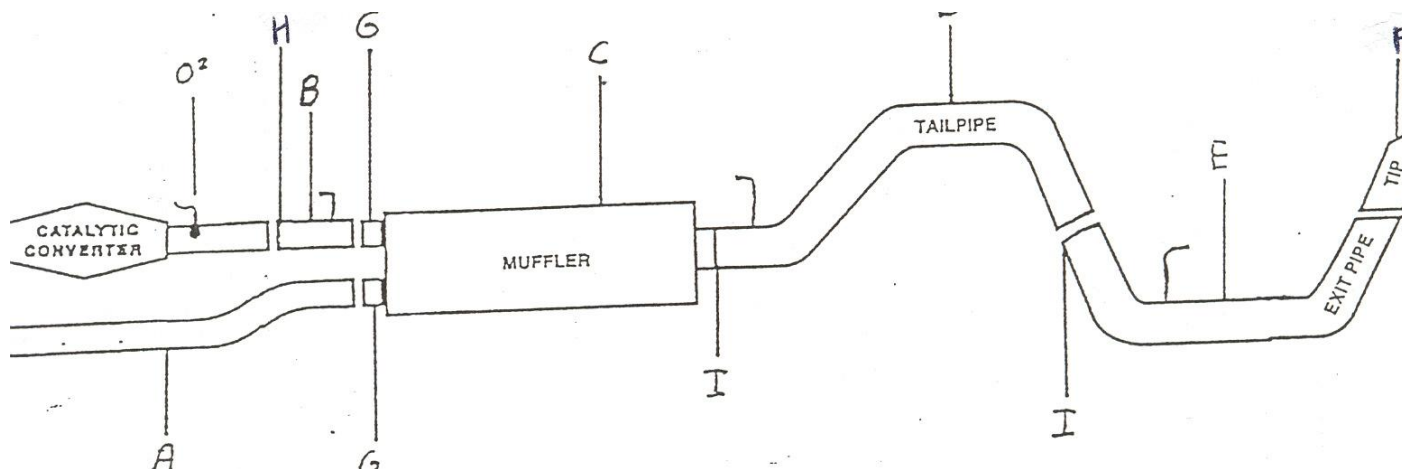




INSTRUCTION MANUAL

ELITE CAT-BACK SINGLE EXHAUST

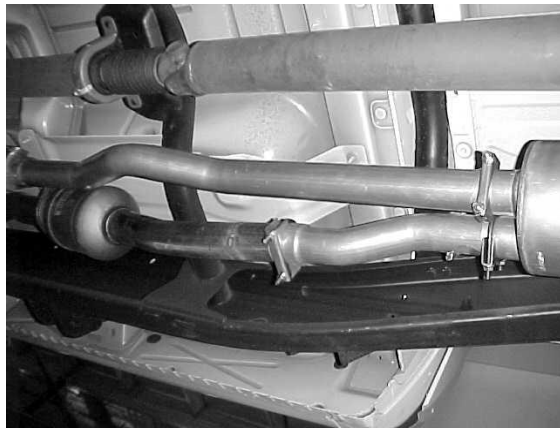
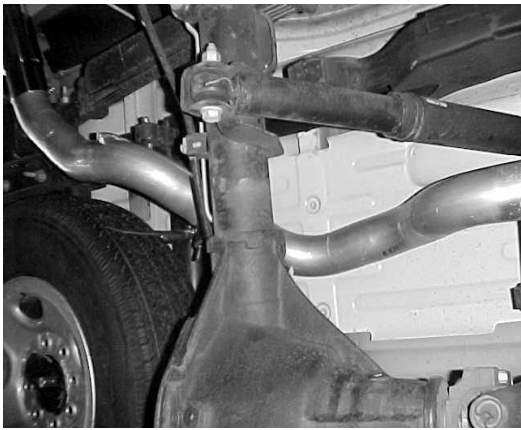
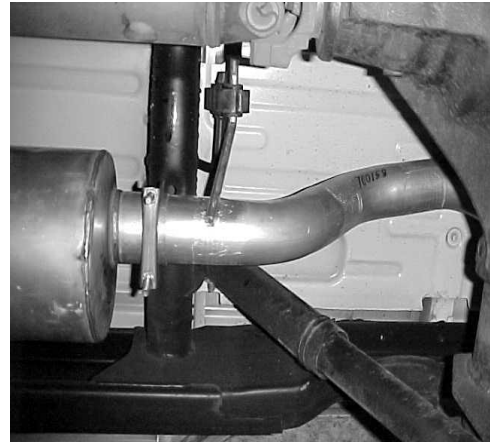
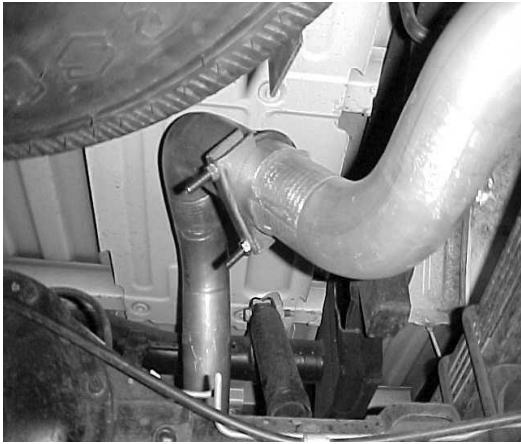
CHEVY SILVERADO TRUCK 3500 6.0L 2/4WD EXTENDED
 CAB, LONG BED
 NEW BODY STYLE
 PART # 615525



ITEM	PART #	QTY	DESCRIPTION
A	369-700194S	1	2.5" STAINLESS DRIVERSIDE HEADPIPE
B	368-700195S	1	2.5" STAINLESS PASS. SIDE HEADPIPE
C	758255S	1	STAINLESS SUPERFLOW MUFFLER
D	301-700158S	1	3" STAINLESS OVERAXLE TAILPIPE
E	302-700159S	1	3" STAINLESS EXIT PIPE
F	500360	1	3-1/2" STAINLESS TIP
G	5757	2	2-1/2" CLAMP
H	5758	2	2-3/4" CLAMP
I	OHD300	2	3" CLAMP

WILL NOT FIT HEAVY DUTY.

Thank you for purchasing our GIBSON EXHAUST SYSTEM for your vehicle. If you need further assistance, please do not hesitate to call our Technical Department at 1-800-528-3044, Monday through Friday, 8:00 am to 5:00 pm.



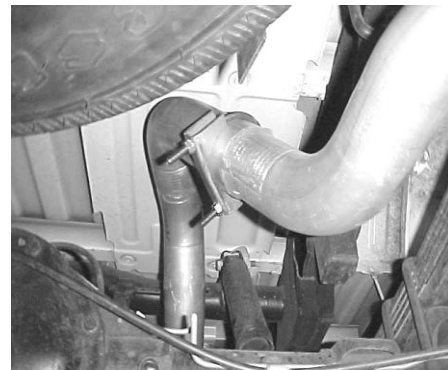
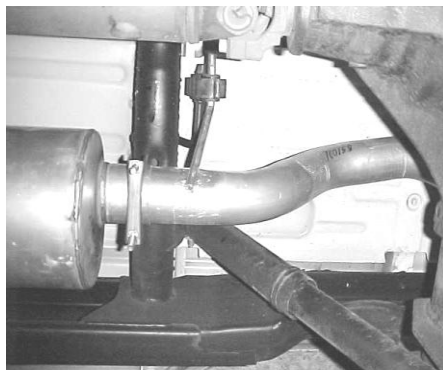
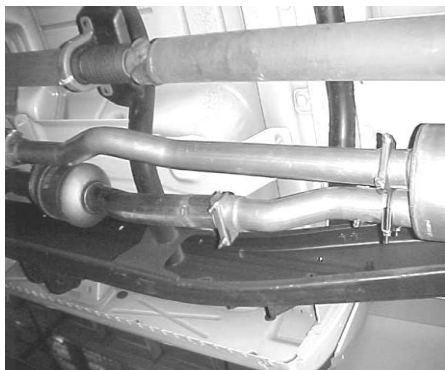
EXHAUST INSTRUCTIONS

KIT #615525

WHEN INSTALLING THIS EXHAUST SYSTEM MAKE SURE TO USE ALL THE PROPER SAFETY PRECAUTIONS. USE JACK STANDS WHEN UNDER TRUCK, SET PARKING BRAKE, BLOCK TIRES AND USE SAFETY GLASSES AND GLOVES. DO NOT WORK WITH HOT PIPES!

SUGGESTED TOOLS

7/8 WRENCH, 9/16 SOCKET, 15MM SOCKET, 1/2 SOCKET, HACKSAW, JACKSTAND



LAY OUT THE GIBSON EXHAUST SYSTEM ON THE FLOOR AND COMPARE ALL PART NUMBERS WITH THE MANUAL BEFORE REMOVING YOUR STOCK EXHAUST. **REMOVE YOUR STOCK EXHAUST BY UNBOLTING IT ON THE DRIVER SIDE HEADPIPE APPROX. 48" FROM THE FRONT OF THE MUFFLER FORWARD.** CUT THE DRIVER SIDE HEADPIPE 13" FROM THE MUFFLER FORWARD (LEAVE ALL RUBBER GROMMETS IN PLACE). NOW INSTALL THE HEADPIPES #A & B, AND INSTALL MUFFLER # C WITH THE OUTLET LOCATED AT ABOUT 12:00 O'CLOCK. INSTALL TAILPIPE #D INSERT WELDED HANGER INTO RUBBER GROMMET. INSTALL TURNOUT PIPE #E AND INSERT WELDED HANGER INTO RUBBER GROMMET. AFTER EVERYTHING IS POSITIONED INSTALL CLAMPS # G TO CLAMP DOWN HEADPIPES AT THE STOCK HEADPIPE. USE CLAMP #G AT THE FRONT OF THE MUFFLER. USE CLAMP # I TO CONNECT TAILPIPE AND TURN OUT PIPES. (DO NOT TIGHTEN CLAMPS)



ADJUST TURNOUT PIPE SO IT EXITS THE SIDE OF THE VEHICLE AT A LEVEL POSITION. ONCE YOU HAVE EVERYTHING ADJUSTED AND HAVE CHECKED ALL CLEARANCES AROUND SPARE TIRE, SHOCKS, BRAKE LINES, ETC. TIGHTEN CLAMPS AT THE FRONT OF THE MUFFLER AND HEADPIPE. CHECK AGAIN FOR CLEARANCES THEN INSTALL YOUR STAINLESS STEEL TIP #H TO YOUR DESIRED LOOK. NOW TIGHTEN TAILPIPE AND TURNOUT PIPE. AFTER EVERYTHING IS TIGHT CHECK FOR CLEARANCES AGAIN.

- **MAKE SURE YOU HAVE 1" CLEARANCE ON ALL PIPES, RUBBER BRAKE LINES, SHOCK BOOTS, TIRES, ETC.**