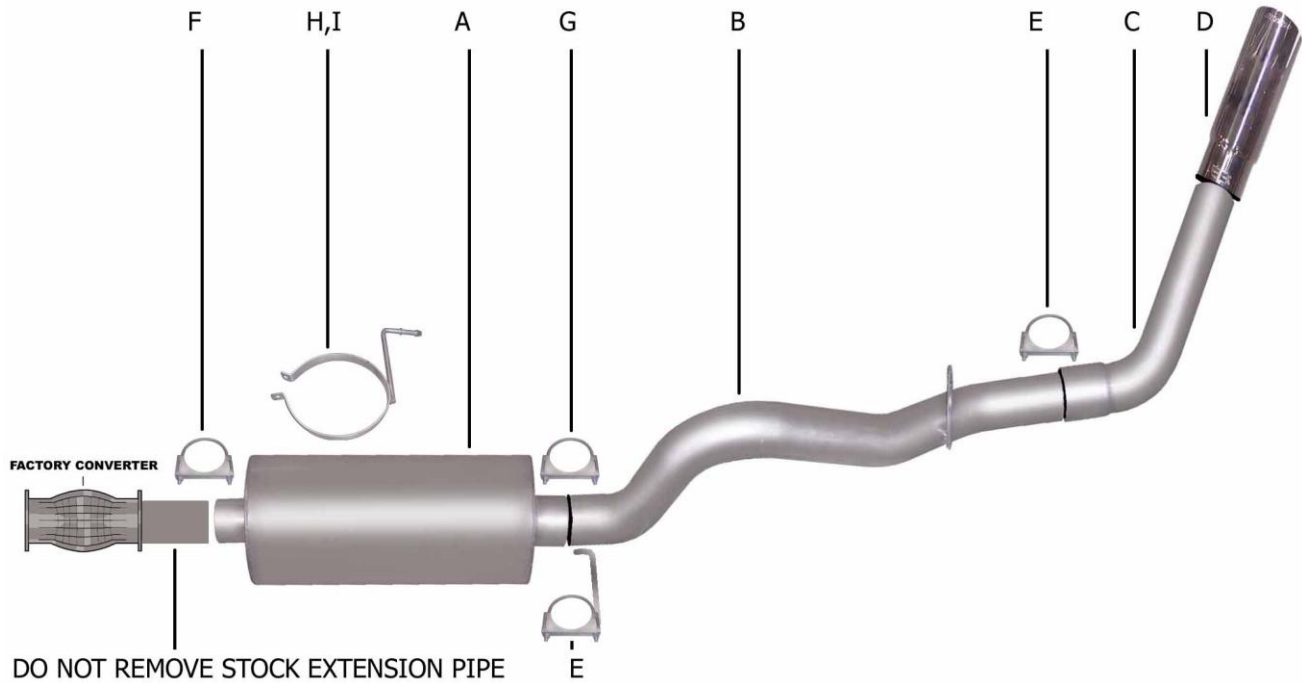




PERFORMANCE EXHAUST SYSTEMS

INSTRUCTION MANUAL
CAT-BACK STAINLESS SINGLE EXHAUST
DODGE DAKOTA 3.9L- 5.2L-5.9L 2/4WD
DAKOTA RT 5.9L 2WD
EXTENDED CAB, SHORT BED
PART # 616507



ITEM	PART #	QUANTITY	DESCRIPTION
A	788702S-1	1	STAINLESS SUPERFLOW MUFFLER
B	100-500630S	1	3" STAINLESS OVERAXLE TAILPIPE
C	101-50032RS-6	1	3" STAINLESS TURNOUT PIPE
D	500360	1	3-1/2" STAINLESS STEEL TIP
E	OHD300	2	3" CLAMP
F	5757	1	2-1/2" CLAMP
G	4128	1	3" REAR MUFFLER HANGER
H	4178	1	BAND CLAMP
I	BO-1015	1	BOLT KIT FOR BAND CLAMP

Thank you for purchasing our GIBSON EXHAUST SYSTEM for your vehicle. If you need further assistance, please do not hesitate to call our Technical Department at 800-528-3044, Monday through Friday, 8:00AM to 5:00PM.

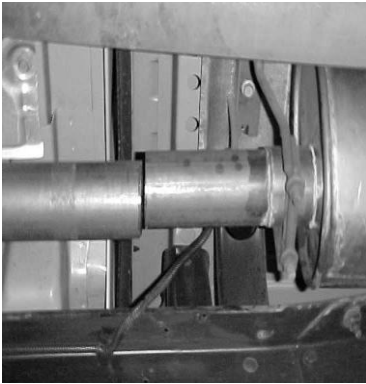
EXHAUST INSTALLATION

#616507

WHEN INSTALLING THIS EXHAUST SYSTEM, MAKE SURE TO USE PROPER SAFETY PRECAUTIONS. USE JACK STANDS WHEN UNDER TRUCK, SET PARKING BRAKE, BLOCK TIRES AND USE SAFETY GLASSES AND GLOVES. **DO NOT WORK WITH HOT PIPES!**

SUGGESTED TOOLS:

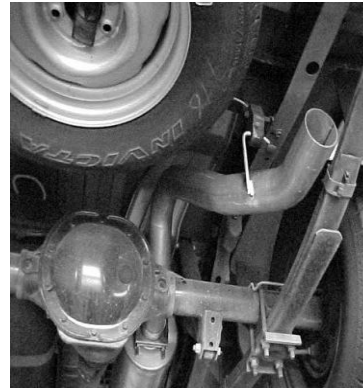
HACKSAW, 9/16" SOCKET, 1/2' WRENCH, 1/2" SOCKET, JACKSTAND, WD-40



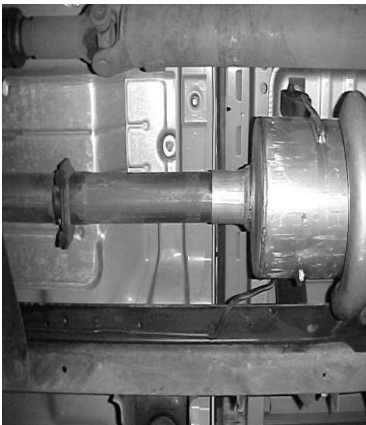
LAY OUT THE GIBSON EXHAUST AND COMPARE THE PART NUMBERS WITH THE MANUAL.

FOR 4WD- REMOVE STOCK MUFFLER AT SLIP JOINT 8" IN FRONT OF THE MUFFLER.

FOR 2WD- CUT 8" IN FRONT OF THE FACTORY MUFFLER AND REMOVE. FOR AN EASIER REMOVAL OF THE FACTORY EXHAUST, CUT JUST BEHIND THE REAR MUFFLER HANGER. **LEAVE ALL THE FACTORY RUBBER GROMMETS IN PLACE.**



INSTALL OVER AXLE PIPE #B INTO THE OUTLET OF THE MUFFLER 1-1/2" TO 2". INSERT REAR WELDED HANGER INTO THE FACTORY RUBBER GROMMET USING HANGER #G. IF NEEDED ALSO USE CLAMP #E AT THE OUTLET OF THE MUFFLER. DO NOT TIGHTEN.



IN FRONT OF THE STOCK HEADPIPE INSTALL BAND CLAMP PART #H INTO RUBBER GROMMETS. SLIP MUFFLER #A ONTO THE FACTORY HEADPIPE NO MORE THEN 2" AND NO LESS THEN 1 1/2". INLET HAS LOUVERS FACING THE MOTOR. USE CLAMP # F AT THE INLET OF THE MUFFLER. ATTACH IT TO THE FACTORY HEADPIPE. DO NOT TIGHTEN. USE A JACK STAND TO SUPPORT THE MUFFLER.



INSTALL EXIT PIPE #C ONTO THE OVER AXLE PIPE USING CLAMP #E. DO NOT TIGHTEN. NOW ROTATE PIPE'S UNTIL YOU HAVE A MINIMUM OF A 1" CLEARANCE ON ALL PIPE'S FROM ALL BRAKE LINES, TIRES, FUEL LINES, SHOCK BOOTS, ETC. THEN TIGHTEN ALL CLAMPS AND HANGERS.



INSTALL THE REAR MUFFLER HANGER #G. THE VERTICAL ROD OF THE HANGER WILL BE POSITIONED ON THE PASSENGER SIDE OF THE MUFFLER OUTLET. DO NOT TIGHTEN.



NOW INSTALL YOUR STAINLESS STEEL TIP TO YOUR DESIRED LOOK. USE ANY ALUMINUM OR STAINLESS CLEANER TO POLISH YOUR TIP.

MAKE SURE YOU HAVE A MINIMUM OF A 1" CLEARANCE ON ALL PIPES, BRAKE LINES, TIRES, SHOCKS AND FUEL LINES.