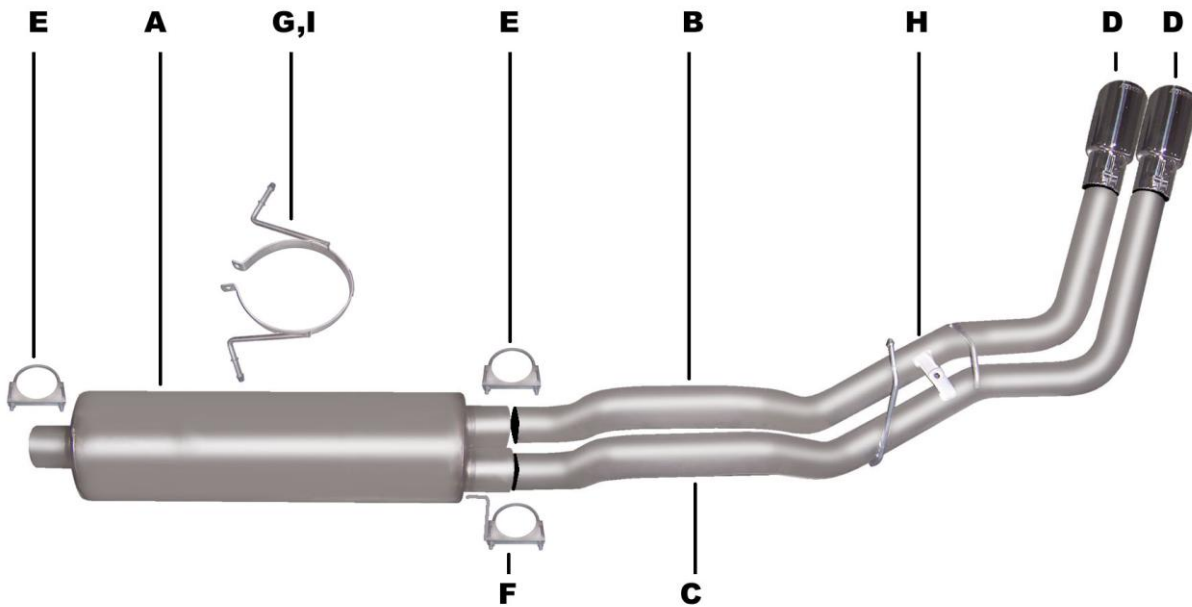




PERFORMANCE EXHAUST SYSTEMS

**INSTRUCTION MANUAL**  
**CAT-BACK DUAL SPORT EXHAUST**  
**DODGE DAKOTA RT TRUCK 5.9L 2WD**  
**EXTENDED CAB, SHORT BED**  
**PART# 6200**



ITEM	PART #	QUANTITY	DESCRIPTION
A	789800-3	1	SUPERFLOW DUAL OUTLET MUFFLER
B	700240	1	2.5" PASSENGERSIDE OVERAXLE TAILPIPE
C	700241	1	2.5" DRIVERSIDE OVERAXLE TAILPIPE
D	500396	2	3-1/2" STAINLESS TIPS
E	5757	2	2.5" CLAMP
F	40090	1	O.E HANGER
G	4150	1	BAND CLAMP
H	BO-906	1	BOLT KIT FOR TAILPIPE
I	BO-1015	1	BOLT KIT FOR BAND CLAMP

Thank you for purchasing our GIBSON EXHAUST SYSTEM for your vehicle. If you need further assistance, please do not hesitate to call our Technical Department at (800) 528-3044, Monday through Friday 8:00am to 5:00PM.

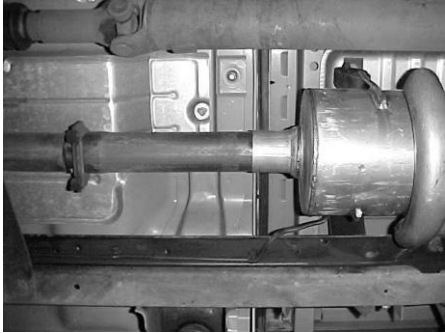
# EXHAUST INSTALLATION KIT# 6200

WHEN INSTALLING THIS EXHAUST SYSTEM, MAKE SURE TO USE PROPER SAFETY PRECAUTIONS. USE JACK STAND WHEN UNDER TRUCK, SET PARKING BRAKE, BLOCK TIRES, AND USE SAFETY GLASSES AND GLOVES. DO NOT WORK WITH HOT PIPES!

## SUGGESTED TOOLS:

15mm Wrench, 9/16 Socket,  $\frac{1}{2}$  Wrench, Jack Stand, Hacksaw, WD-40

LAYOUT THE GIBSON EXHAUST ON THE FLOOR AND COMPARE PARTS WITH THE DRAWING.

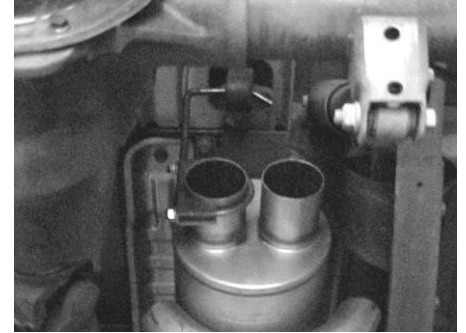


DO NOT REMOVE THE STOCK HEADPIPE. CUT 8" IN FRONT OF YOUR STOCK MUFFLER.

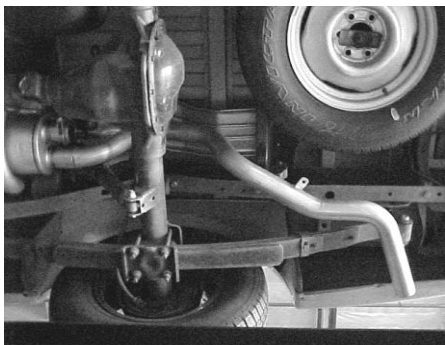
LEAVE ALL OF YOUR FACTORY RUBBER GROMMETS IN PLACE. USE WD-40 ON THE FACTORY HANGERS. FOR EASIER REMOVAL OF THE STOCK SYSTEM YOU CAN CUT THE TAILPIPE RIGHT BEHIND THE MUFFLER.



INSTALL THE BAND CLAMP #G INTO FACTORY GROMMETS BEHIND THE STOCK HEADPIPE. ATTACH WITH BOLT KIT #I. NEXT, SLIDE MUFFLER THROUGH THE BAND CLAMP WITH THE INLET TOWARDS THE MOTOR. USE CLAMP #E TO SECURE MUFFLER TO THE STOCK PIPE. USE A JACK STAND TO SUPPORT THE MUFFLER. INLET HAS LOUVERS INSIDE FACING TOWARDS THE MOTOR. DO NOT TIGHTEN



INSTALL REAR MUFFLER HANGER # F ON TO THE DRIVERSIDE MUFFLER OUTLET. SLIDE HANGER INTO RUBBER GROMMET. DO NOT TIGHTEN



INSTALL PASSENGERSIDE OVERAXLE TAILPIPE #B INTO MUFFLER AT LEAST 1  $\frac{1}{2}$ " TO 2". USE CLAMP #E TO SECURE IT. DO NOT TIGHTEN. INSERT WELDED HANGER INTO RUBBER GROMMET.



INSTALL DRIVERSIDE OVERAXLE TAILPIPE #C INTO MUFFLER AT LEAST 1  $\frac{1}{2}$ " TO 2". INSERT WELED HANGER INTO RUBBER GROMMET. USE HANGER #F TO ATTACH TAILPIPE TO MUFFLER OUTLET. USE BOLT KIT #H TO BOLT BOTH TAILPIPES TOGETHER. DRIVERSIDE TAILPIPE BRACKET SHOULD BE ON TOP OF PASSENGER TAILPIPE BRACKET. DO NOT TIGHTEN.



INSTALL YOUR STAINLESS TIPS. NOW TIGHTEN ALL CLAMPS AND HANGERS STARTING FROM THE MUFFLER BACK.

**MAKE SURE YOU HAVE A MIMIMUM OF AT LEAST 1" OF CLEARANCE FROM ALL BRAKE & FUEL LINES, SHOCKS, TIRES, PIPES, ETC.**