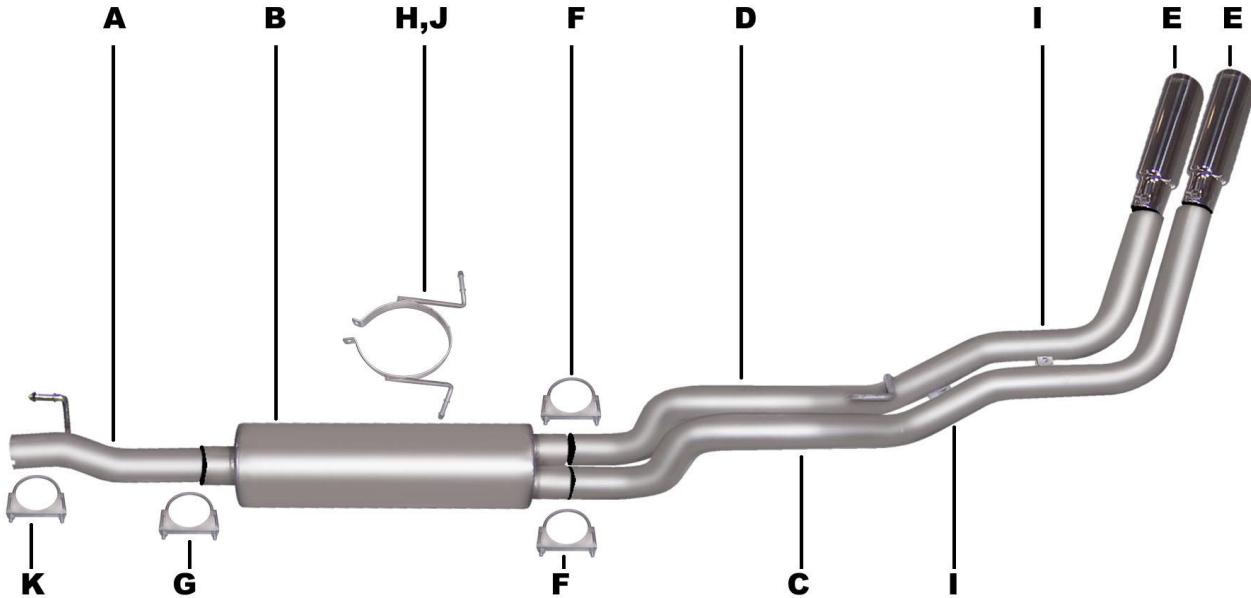




PERFORMANCE EXHAUST SYSTEMS

INSTRUCTION MANUAL
CAT BACK DUAL SPORT EXHAUST
DODGE RAM 1500 TRUCK 5.7L HEMI 2/4WD
STANDARD CAB, SHORT BED
PART # 6517



ITEM	PART #	QUANTITY	DESCRIPTION
A	700483	1	3"X21" HEADPIPE EXTEN. W/HANGER
B	789800	1	SUPERFLOW MUFFLER
C	700409	1	2- $\frac{1}{2}$ " DRIVER SIDE TAILPIPE
D	700410	1	2- $\frac{1}{2}$ " PASS. SIDE TAILPIPE
E	500374	2	3- $\frac{1}{2}$ " STAINLESS TIPS
F	5757	2	2- $\frac{1}{2}$ " CLAMP
G	OHD300	1	3" CLAMP
H	4188	1	BAND CLAMP
I	BO-906	2	BOLT KIT FOR TAILPIPE
J	BO-1015	1	BAND CLAMP BOLT KIT
K	5758	1	2 $\frac{3}{4}$ " CLAMP

Thank you for purchasing our GIBSON EXHAUST SYSTEM for your vehicle. If you need further assistance, please do not hesitate to call our Technical Department at (800) 524-3044, Monday through Friday, 8:00 am to 5:00 pm.

EXHAUST INSTALLATION KIT#6517

WHEN INSTALLING THIS EXHAUST SYSTEM MAKE SURE TO USE ALL THE PROPER SAFETY PRECAUTIONS. USE JACKSTANDS WHEN UNDER THE TRUCK, SET PARKING BRAKE, BLOCK TIRES, AND USE SAFETY GLASSES AND GLOVES.

DO NOT WORK WITH HOT PIPES!

SUGGESTED TOOLS

15MM SOCKET, 9/16" SOCKET, 1/2" SOCKET, 1/2" WRENCH, JACKSTANDS, HACKSAW, WD-40

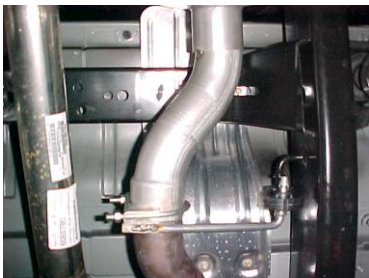
TO REMOVE THE STOCK EXHAUST UNCLAMP THE STOCK EXHAUST JUST IN FRONT OF THE MUFFLER



YOU MAY NEED TO HEAT IT UP FOR EASIER REMOVAL. LEAVE ALL RUBBER GROMMETS IN PLACE. USE WD-40 FOR REMOVAL OF HANGERS.



INSTALL DRIVERSIDE TAILPIPE #C INTO MUFFLER. USE CLAMP #F TO SECURE TAILPIPE TO MUFFLER.



INSTALL HEADPIPE #A ONTO YOUR EXISTING STOCK FRONT PIPE AND SECURE WITH CLAMP #K. INSERT WELDED HANGER INTO RUBBER GROMMET.



INSTALL PASSENGER SIDE TAILPIPE #D INTO MUFFLER AND ATTACH USING CLAMP #F. INSERT WELDED HANGER INTO RUBBER GROMMET. DO NOT TIGHTEN. USE BOLT KIT #I TO ATTACH THE TAILPIPES TOGETHER. DO NOT TIGHTEN. PASSANGER SIDE TAB ON THE TAILPIPE WILL BE ON TOP OF THE DRIVERSIDE TAB.



INSTALL MUFFLER #B ONTO HEADPIPE 1-1/2" TO 2". USE CLAMP #G TO SECURE THE MUFFLER TO THE HEADPIPE. DO NOT TIGHTEN. SLIDE BAND CLAMP #H ONTO THE MUFFLER AND INSERT THE WELDED HANGERS INTO THE RUBBER GROMMETS. ATTACH WITH BOLT KIT #J.



INSTALL THE STAINLESS TIPS. NOW, GO BACK AND TIGHTEN ALL CLAMPS, NUTS AND BOLTS STARTING FROM THE FRONT AND WORKING BACK. TO CLEAN TIPS USE A SCOTCH BRITE PAD AND ANY STAINLESS CLEANER.

MAKE SURE YOU HAVE A MIMIMUM OF A 1" CLEARANCE AWAY FROM ALL SHOCK BOOTS, BRAKE LINES, FUEL LINES, TIRES, ETC...