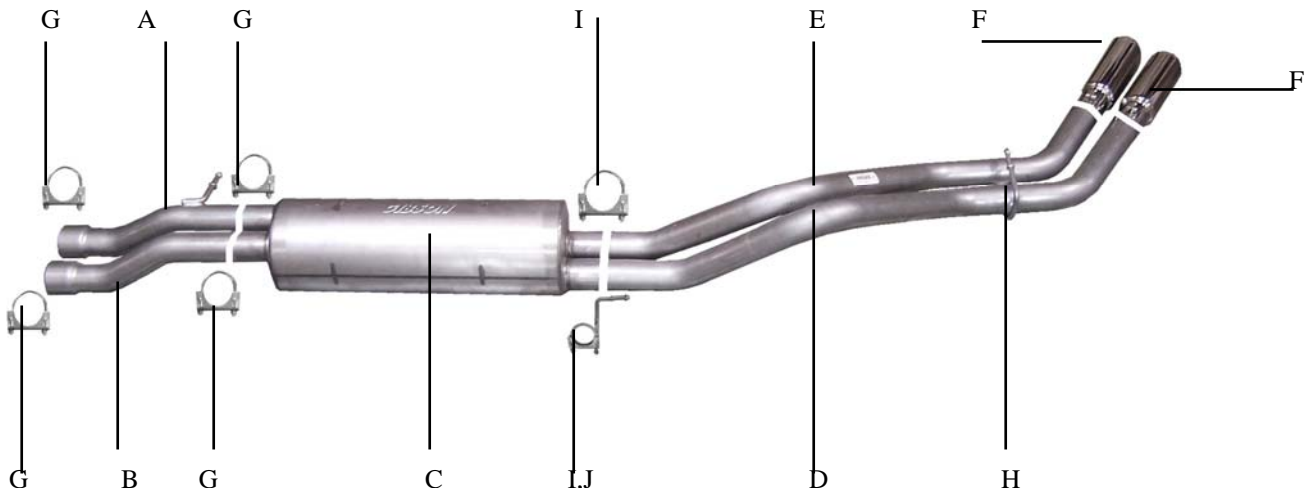




**INSTRUCTION MANUAL**  
**CAT BACK STAINLESS DUAL SPORT EXHAUST**  
**01-05 SILVERADO /SIERRA TRUCK 1500HD 6.0L 2/4WD**  
**03-05 GMC TRUCK 1500HD 6.0L QUAD STEER 4WD**  
**CREW CAB, SHORT BED**

**PART # 65207**



ITEM	PART #	QUANTITY	DESCRIPTION
A	479-700363S	1	2.5" SS PSGR. HEADPIPE W/WELDED HANGER
B	478-700364S	1	2.5" SS DRIVER SIDE HEADPIPE
C	766024S	1	SUPERFLOW STAINLESS MUFFLER
D	477-700365S	1	2-1/2" SS DRIVERSIDE TAILPIPE W/HANGER
E	476-700366S	1	2-1/2" SS PASSENGER TAILPIPE
F	500374	2	3 1/2" STAINLESS TIPS
G	5757	4	2-1/2" CLAMPS
H	BO-906	1	BOLT KIT FOR TAILPIPE
I	5758	2	2-3/4" CLAMP
J	4219	1	REAR MUFFLER HANGER

**WILL NOT FIT WITH A FIFTH WHEEL TRAILER HITCH**

THANK YOU FOR CHOOSING OUR GIBSON PERFORMANCE EXHAUST FOR YOUR VEHICLE.  
 IF YOU NEED FURTHER ASSISTANCE, PLEASE DO NOT HESITATE TO CALL OUR  
 TECHNICAL DEPARTMENT AT (800) 528-3044, MONDAY THROUGH FRIDAY,  
 8:00 AM TO 5:00 PM. 0805

# EXHAUST INSTALLATION #65207

WHEN INSTALLING THIS EXHAUST SYSTEM MAKE SURE TO USE PROPER SAFETY PRECAUTIONS. USE JACK STANDS WHEN UNDER THE TRUCK, SET PARKING BRAKE, BLOCK TIRES AND USE SAFETY GLASSES AND GLOVES.

**DO NOT WORK WITH HOT PIPES!!!**

## SUGGESTED TOOLS

15MM SOCKET & WRENCH, 9/16", 7/16", 1/2" SOCKET & WRENCH, JACK STANDS, WD-40, HACKSAW

LAY OUT THE EXHAUST AND COMPARE PART NUMBERS WITH THE DRAWING



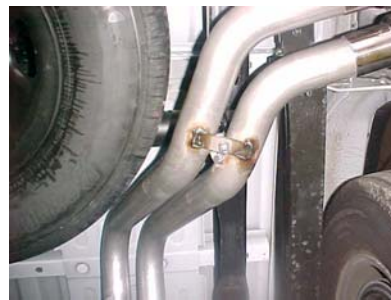
**TO REMOVE STOCK EXHAUST, CUT 16" FROM THE FRONT OF THE MUFFLER FORWARD TOWARDS THE FRONT OF THE VEHICLE. LEAVE ALL RUBBER GROMMETS ON THE HANGERS. USE WD-40 TO AID IN THE REMOVAL OF EXHAUST AND HANGERS.**



SLIDE DRIVERS SIDE TAILPIPE #D INTO MUFFLER 1-1/2" TO 2". GROMMET. USE CLAMP #J TO SECURE PIPE TO MUFFLER. DO NOT TIGHTEN. THE TAB ON THE TAILPIPE SHOULD BE ON THE TOP OF THE OTHER TAB,



SLIDE PASSENGER SIDE HEADPIPE #A ONTO STOCK HEADPIPE. INSERT WELDED HANGER INTO RUBBER GROMMET. NEXT INSTALL DRIVERS SIDE HEADPIPE #B ONTO STOCK HEADPIPE. USE CLAMP #I TO SECURE BOTH HEADPIPES, DO NOT TIGHTEN.



BOLT THESE TOGETHER USING BOLT KIT #H.



SLIDE MUFFLER #C ONTO HEADPIPES 1-1/2" TO 2", WITH THE INLET FACING THE MOTOR, USE A JACK STAND TO SUPPORT MUFFLER. USE CLAMP #G TO SECURE MUFFLER TO HEADPIPES. DO NOT TIGHTEN. OUTLETS OF THE MUFFLER SHOULD BE ON THE TOP. THE INLET OF THE MUFFLER IS LOOKING INTO THE LOUVERS. INSTALL REAR MUFFLER HANGER #J ONTO DRIVERSIDE OUTLET. DO NOT TIGHTEN.



ADJUST BOTH TAILPIPES SO THEY ARE LEVEL.



SLIDE PASSENGER SIDE TAILPIPE #E INTO OUTLET OF MUFFLER 1-1/2" TO 2". INSERT WELDED HANGER INTO RUBBER GROMMET. USE CLAMP #G TO SECURE TAILPIPE TO MUFFLER. DO NOT TIGHTEN.



INSTALL YOUR STAINLESS STEEL TIPS. TO CLEAN TIPS USE A SCOTCH BRITE PAD AND ANY STAINLESS OR ALUMINUM CLEANER. AFTER YOU HAVE CHECKED FOR CLEARANCES GO BACK AND TIGHTEN ALL NUTS, BOLTS. TIGHTEN CLAMPS TO APPX 100-150 FT LBS .

**“MAKE SURE YOU HAVE A MINIMUM OF 1” CLEARANCE ON ALL PIPES**

**FROM BRAKE AND FUEL LINES, TIRES, SHOCKS, ETC. !!**