

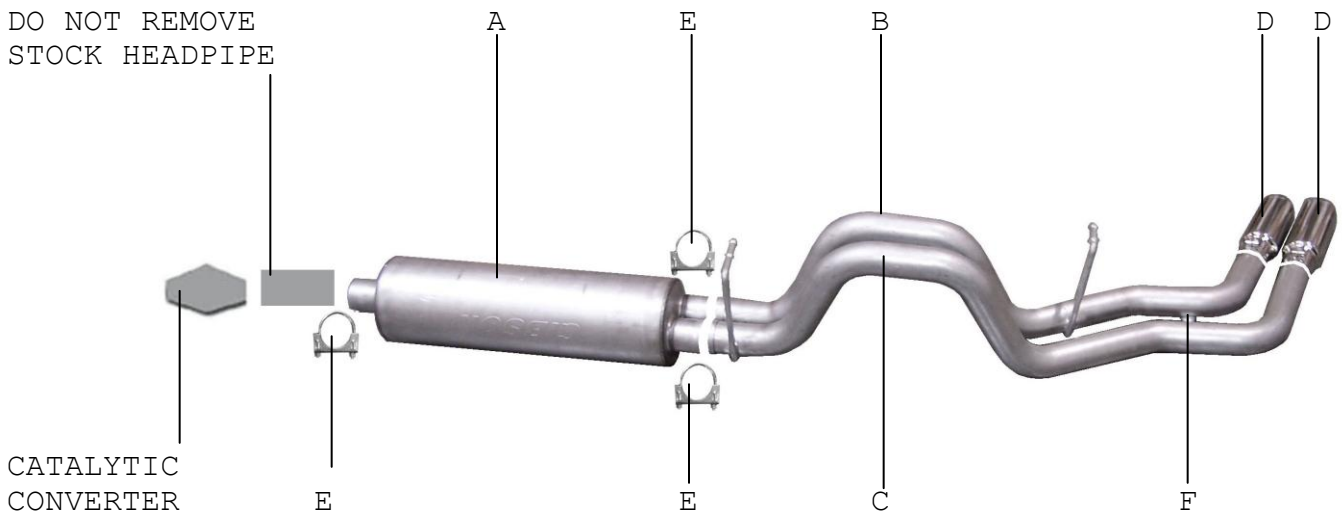


INSTRUCTION MANUAL

CAT-BACK DUAL SPORT EXHAUST DODGE DAKOTA TRUCK 3.7L-4.7L 2/4WD CLUB CAB, SHORT BED QUAD CAB, SHORT BED

PART# 6534

DO NOT REMOVE
STOCK HEADPIPE



CATALYTIC
CONVERTER

| ITEM | PART # | QUANTITY | DESCRIPTION |
|------|----------|----------|--------------------------------------|
| A | 789800-1 | 1 | DUAL OUTLET SUPERFLOW MUFFLER |
| B | 700593 | 1 | 2.5" PASSENGERSIDE OVERAXLE TAILPIPE |
| C | 700594 | 1 | 2.5" DRIVERSIDE OVERAXLE TAILPIPE |
| D | 500374 | 2 | 3 1/2" STAINLESS TIP |
| E | 5757 | 3 | 2-1/2" CLAMP |
| F | BO-906 | 1 | BOLT KIT FOR TAILPIPE |

Thank you for purchasing our GIBSON EXHAUST SYSTEM for your vehicle.
If you need further assistance, please do not hesitate to call our
Technical Department at (800) 528-3044 Monday through Friday 8:00am
to 5:00PM.

EXHAUST INSTALLATION #6534

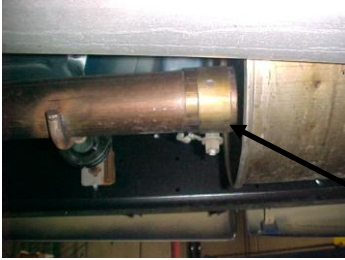
When installing this exhaust system make sure to use proper safety precautions. Use jack stands when under the truck, set parking brake, block tires and use safety glasses and gloves.

DO NOT WORK WITH HOT PIPES!

SUGGESTED TOOLS:

1/2", 9/16", 15mm wrench and socket, WD-40, Hacksaw, Jack Stand

Lay out the exhaust on the floor so it looks like the drawing and compare parts with manual.



To remove the stock exhaust un-clamp it just in front of the muffler. You may need to heat it up for easier removal. Leave all rubber grommets in place. Use WD-40 to aid in removal of exhaust and the hangers.



Install passenger side over axle tailpipe # B into muffler 1-1/2" – 2" and attach using clamp # E. Insert hanger into rubber grommet.



Install muffler # A onto stock pipe with the louvers facing towards the converter. Use a jack stand to support the muffler. Use clamp #E to secure the muffler to the pipe. Do not tighten. Muffler inlet is looking into the louvers. Line up notch with factory alignment pin.

Use bolt kit # F to attach the tailpipes together. The Driverside tailpipe bracket should be on the bottom of passenger tailpipe bracket. Do not tighten.



Install the stainless tips. Clamp down. To clean your stainless tips use any stainless cleaner or a Scotch Brite pad. Now go back and tighten all clamps, nuts and bolts. Start from the front and work back.



Install the driver side over axle tailpipe # C into the muffler. 1-1/2 TO 2". Use clamp #E to secure tailpipe to muffler. Do not tighten.

MAKE SURE YOU HAVE A 1" CLEARANCE ON ALL RUBBER BRAKE LINES, SHOCK BOOTS, TIRE, FUEL LINES, ETC.