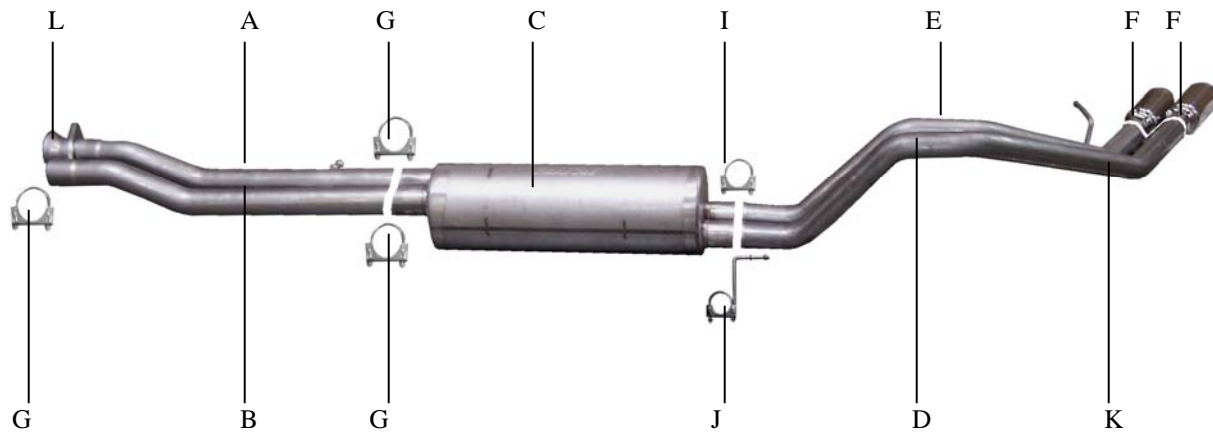


# **GIBSON**

**PERFORMANCE EXHAUST SYSTEMS**

INSTRUCTION MANUAL  
 CAT BACK DUAL STAINLESS SPORT EXHAUST  
 02-06 CADILLAC ESCALADE EXT  
 CREW CAB, SHORT BED  
 6.0L, AWD, 4 DR  
 PART# 65606



ITEM	PART#	QTY	DESCRIPTION
A	643-700508S	1	2.5" SS PASSENGER SIDE HEADPIPE W/ FLANGE # GP-105
B	644-700509S	1	2.5" SS DRIVER SIDE HEADPIPE
C	788701S	1	SUPERFLOW SS MUFFLER
D	645-700510S	1	2-1/4" SS DRIVER SIDE TAILPIPE W/HANGER
E	646-700511S	1	2-1/4" SS PASSENGER SIDE TAILPIPE
F	500395	2	STAINLESS STEEL TIPS
G	5757	3	2.5" CLAMP
I	5756	1	2 1/4" CLAMP
J	4208	1	REAR MUFFLER HANGER
K	BO-906	1	BOLT KIT FOR TAILPIPES
L	BO-1028	1	BOLT KIT FOR HEADPIPE FLANGE

THANK YOU FOR PURCHASING OUR GIBSON EXHAUST SYSTEM FOR YOUR VEHICLE. IF YOU NEED FURTHER ASSISTANCE, PLEASE DO NOT HESITATE TO CALL OUR TECHNICAL DEPARTMENT AT (800) 528-3044, MONDAY – FRIDAY, 8:00 AM TO 5:00 PM.  
 1104

## **INSTALLATION INSTRUCTIONS PART# 65606**

WHEN INSTALLING THIS EXHAUST SYSTEM, MAKE SURE TO USE PROPER SAFETY PRECAUTIONS. USE JACK STANDS WHEN UNDER THE TRUCK, SET PARKING BRAKE, BLOCK TIRES AND USE SAFETY GLASSES AND GLOVES.

**DO NOT WORK WITH HOT PIPES!**

**SUGGESTED TOOLS:**

15MM SOCKET & WRENCH, 9/16", 7/16", 1/2" SOCKETS & WRENCH, JACK STAND, WD-40, HACKSAW

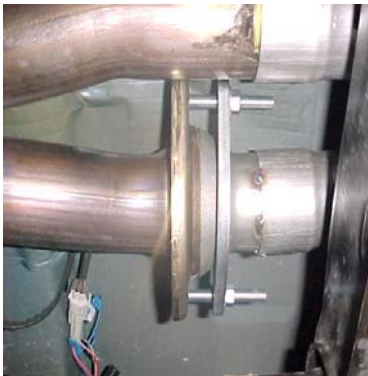
LAY OUT THE EXHAUST AND COMPARE PART NUMBERS WITH THE DRAWING.



TO REMOVE STOCK EXHAUST CUT YOUR STOCK TAILPIPE OFF, REMOVE HANGERS FROM RUBBER GROMMETS, USE WD-40 TO HELP WITH REMOVAL. NOW UN-BOLT YOUR FACTORY EXHAUST AT THE FLANGES LOCATED JUST AFTER YOUR Y-PIPE.



INSTALL PASSENGER SIDE OVERAXLE TAILPIPE # E INTO MUFFLER 1-1/2" TO 2". INSERT WELDED HANGER INTO RUBBER GROMMET. USE CLAMP #I TO SECURE PIPE TO MUFFLER. DO NOT TIGHTEN.



BOLT PASSENGER SIDE HEADPIPE # A USING HARDWARE KIT # L. DO NOT TIGHTEN. INSERT HANGER INTO RUBBER GROMMET, NEXT SLIP DRIVER SIDE HEADPIPE # B ONTO FACTORY PIPE USE CLAMP # G TO SECURE. DO NOT TIGHTEN.



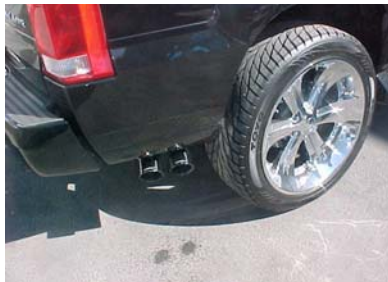
INSTALL DRIVERS SIDE OVERAXLE TAILPIPE INTO MUFFLER 1-1/2" TO 2". ATTACH TO MUFFLER OUTLET USING HANGER # J. USE BOLT KIT #K TO ATTACH BOTH TAILPIPES TOGETHER DRIVERS SIDE TAB WILL BE ON THE BOTTOM.



INSTALL YOUR STAINLESS STEEL TIPS. TO CLEAN TIPS USE ANY STAINLESS OR ALUMINUM CLEANER AND A SCOTCH BRITE PAD. NOW GO BACK AND TIGHTEN ALL NUTS, BOLTS AND CLAMPS STARTING FROM THE FRONT AND WORKING BACK.



NEXT INSTALL MUFFLER #C. SLIDE IT ONTO HEADPIPE 1-1/2" TO 2". INLET OF MUFFLER SHOULD FACE TOWARDS THE MOTOR. INSTALL REAR MUFFLER HANGER #J INTO RUBBER GROMMET LOCATED JUST ABOVE THE DRIVERS SIDE OUTLET OF THE MUFFLER. SLIDE CLAMP ONTO MUFFLER OUTLET. INLET OF MUFFLER IS LOOKING INTO THE LOUVERS. DO NOT TIGHTEN.



**“MAKE SURE YOU HAVE A 1” CLEARANCE ON ALL PIPES FROM BRAKE AND FUEL LINES, TIRES, SHOCKS, ETC...”**