



PERFORMANCE EXHAUST SYSTEMS

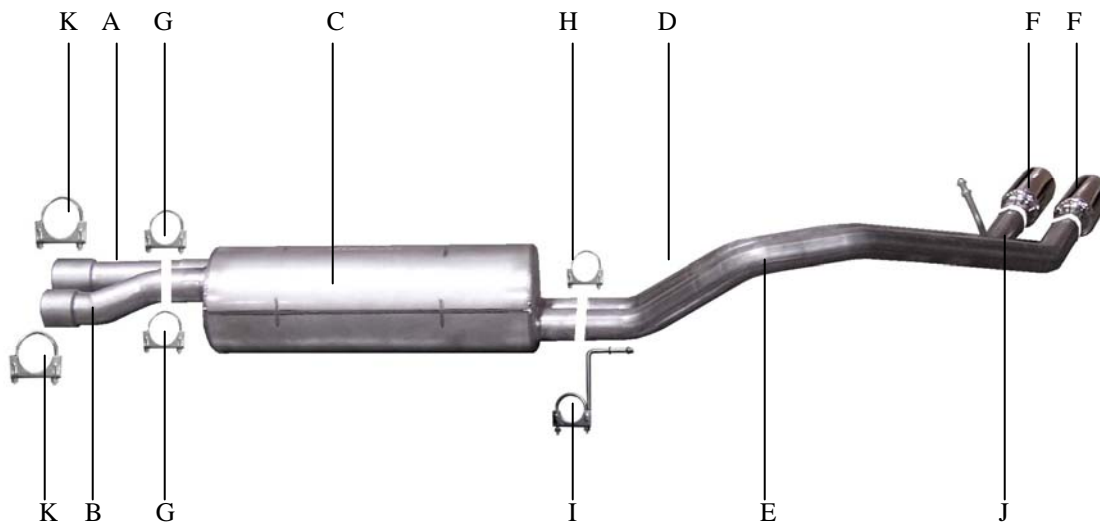
INSTRUCTION MANUAL

CAT BACK DUAL SPORT EXHAUST

02-06 CADILLAC ESCALADE 6.0L, AWD, 4 DOOR

01-06 YUKON, DENALI 6.0L, AWD, 4 DOOR

PART# 9602



ITEM	PART#	QTY	DESCRIPTION
A	700349-1	1	2.5" PSGR HEADPIPE
B	700346-1	1	2.5" DRIVER SIDE HEADPIPE
C	788701	1	SUPERFLOW MUFFLER
D	700347-1	1	2-1/4" PASS. SIDE TAILPIPE W/HANGER
E	700348-1	1	2-1/4" DRIVER SIDE TAILPIPE
F	500395	2	3.5" STAINLESS STEEL TIPS
G	5757	2	2.5" CLAMP
H	5756	1	2 1/4" CLAMP
I	4208	1	REAR MUFFLER HANGER
J	BO-906	1	BOLT KIT FOR TAILPIPES
K	5758	2	2 3/4" CLAMPS

THANK YOU FOR PURCHASING OUR GIBSON EXHAUST SYSTEM FOR YOUR VEHICLE. IF YOU NEED FURTHER ASSISTANCE, PLEASE DO NOT HESITATE TO CALL OUR TECHNICAL DEPARTMENT AT (800) 528-3044, MONDAY – FRIDAY, 8:00 AM TO 5:00 PM.
0706

INSTALLATION INSTRUCTIONS PART# 9602

WHEN INSTALLING THIS EXHAUST SYSTEM, MAKE SURE TO USE PROPER SAFETY PRECAUTIONS. USE JACK STANDS WHEN UNDER THE TRUCK, SET PARKING BRAKE, BLOCK TIRES AND USE SAFETY GLASSES AND GLOVES.

DO NOT WORK WITH HOT PIPES!

SUGGESTED TOOLS:

15MM SOCKET & WRENCH, 9/16", 7/16", 1/2" SOCKETS & WRENCH, JACK STAND, WD-40, HACKSAW

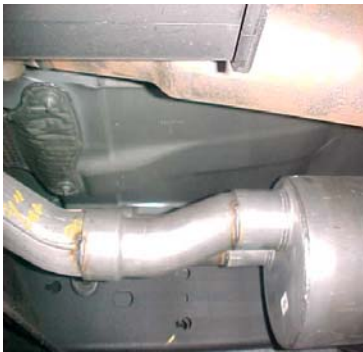
LAY OUT THE EXHAUST AND COMPARE PART NUMBERS WITH THE DRAWING.



TO REMOVE STOCK EXHAUST MEASURE 4" FROM THE FRONT OF THE MUFFLER FORWARD AND CUT. NOW CUT OFF YOUR STOCK TAILPIPE JUST BEHIND THE MUFFLER AND REMOVE. LEAVE ALL RUBBER GROMMETS ON THE HANGER. USE WD-40 TO AID IN THE REMOVAL OF THE EXHAUST AND HANGERS.



INSTALL PASSENGER SIDE OVERAXLE TAILPIPE # D INTO MUFFLER 1-1/2" TO 2". INSERT WELDED HANGER INTO RUBBER GROMMET. USE CLAMP # H TO SECURE PIPE TO MUFFLER. DO NOT TIGHTEN.



INSTALL HEADPIPE # A SLIP IT ONTO STOCK HEADPIPE USING CLAMP # K TO SECURE IT. INSERT WELDED HANGER INTO RUBBER GROMMET. DO NOT TIGHTEN. INSTALL HEADPIPE # B, SLIP IT ONTO THE STOCK HEADPIPE USING CLAMP # K TO SECURE THE HEADPIPE TO THE STOCK PIPE. DO NOT TIGHTEN.



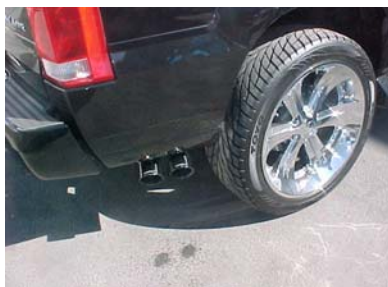
INSTALL DRIVERS SIDE OVERAXLE TAILPIPE # E INTO MUFFLER 1-1/2" TO 2". USE BOLT KIT # J TO ATTACH TAILPIPES TOGETHER DRIVERS SIDE TAB WILL BE ON THE BOTTOM.



NEXT INSTALL MUFFLER #C. SLIDE IT ONTO HEADPIPE 1-1/2" TO 2". INLET OF MUFFLER SHOULD FACE TOWARDS THE MOTOR. INSTALL REAR MUFFLER HANGER # I INTO RUBBER GROMMET LOCATED JUST ABOVE THE DRIVERS SIDE OUTLET OF THE MUFFLER. SLIDE CLAMP ONTO MUFFLER OUTLET. INLET OF MUFFLER IS LOOKING INTO THE LOUVERS. DO NOT TIGHTEN.



INSTALL YOUR STAINLESS STEEL TIPS. TO CLEAN TIPS USE ANY STAINLESS OR ALUMINUM CLEANER AND A SCOTCH BRITE PAD. NOW GO BACK AND TIGHTEN ALL NUTS, BOLTS AND CLAMPS STARTING FROM THE FRONT AND WORKING BACK.



“MAKE SURE YOU HAVE A 1” CLEARANCE ON ALL PIPES FROM BRAKE AND FUEL LINES, TIRES, SHOCKS, ETC...”