



TYPHOON INTAKE SYSTEMS

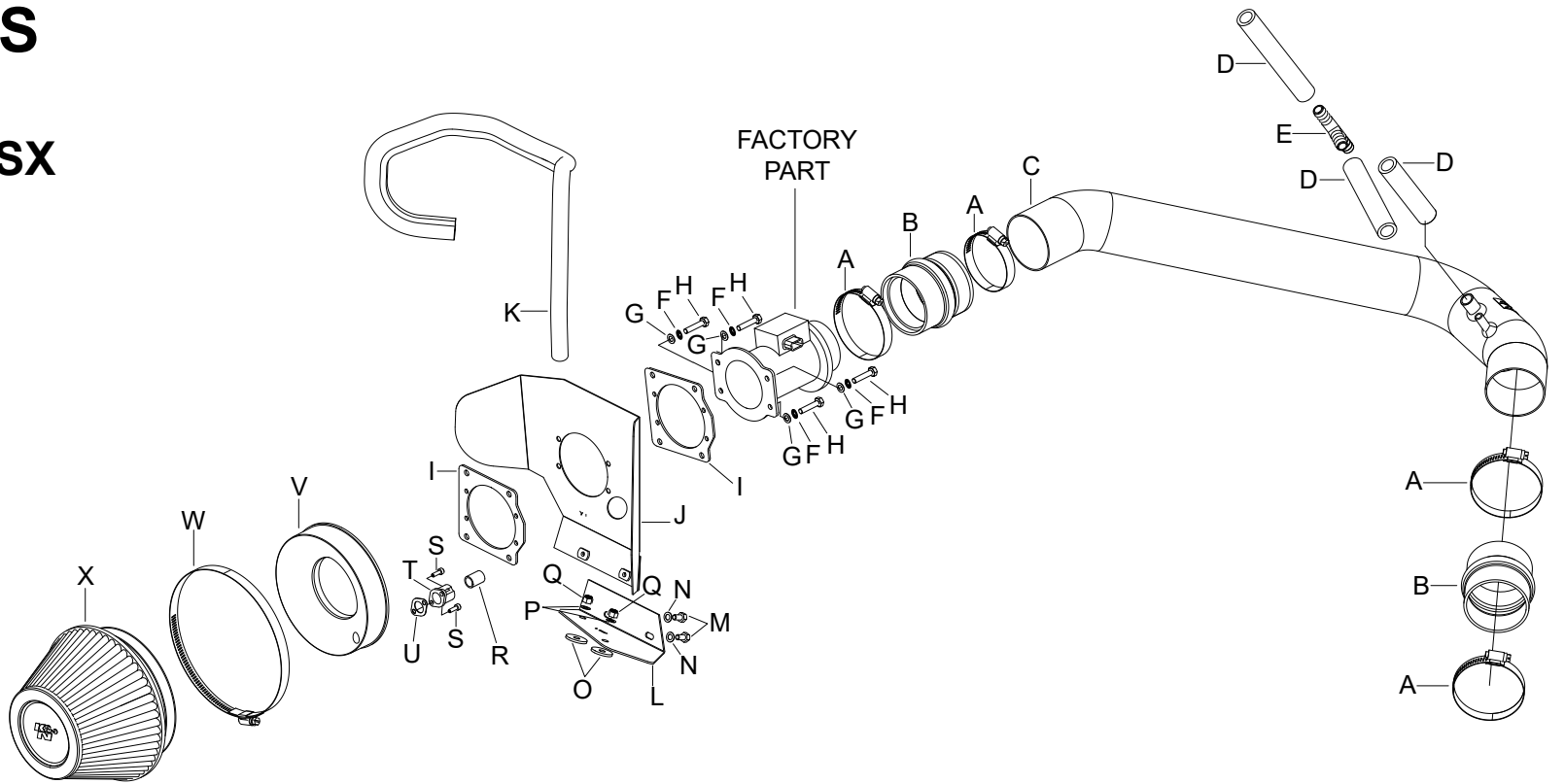
NOT LEGAL FOR SALE OR USE ON ANY POLLUTION CONTROLLED MOTOR VEHICLE IN CALIFORNIA OR STATES ADOPTING CALIFORNIA EMISSION PROCEDURES.
See knfilters.com for CARB status on each part for a specific vehicle

INSTALLATION INSTRUCTIONS

69-7076TS
NISSAN
1995-98 240SX
L4-2.4L

TOOLS NEEDED:

- Pliers
- 4mm Allen
- 10mm Wrench
- Flathead Screwdriver
- 8mm Socket
- 10mm Socket
- Short Extension
- Long Extension
- Ratchet



PARTS LIST:

Description	Qty.	Part #	Description	Qty.	Part #	Description	Qty.	Part #
A HOSE CLAMP #44	4	08560	I GASKET; 3/32" NEOPRENE	2	10493	Q NUT; 6MM NYLOCK, HEX	2	07512
B HOSE; 2-3/4"ID X 3"L, HUMP	2	08439	J HEAT SHIELD	1	07345	R HOSE; 7/16"ID X 1/16" THK.	1	084072
C INTAKE TUBE	1	27155	K EDGE TRIM; 30"L	1	102489	S BOLT; M4-0.07 8MM, A/H CAP.	2	07733
D HOSE; 1/2"ID X 17"L	1	08177	L BRACKET; "L", STL. FB/PC	1	020017	T ADAPTER; #22	1	08264
E VENT; 1/2" BARBED, "T"	1	08166	M BOLT; M6 X 1.00 X 12MM, HEX	2	07727	U GASKET	1	10494
F WASHER; 5MM INTERNAL	4	07724	N WASHER; 6MM WAVE	2	08277	V ADAPTER	1	08265
G WASHER; 5MM FLAT, SS	4	08212	O WASHER; RUBBER	2	21685	W HOSE CLAMP #104	1	08697
H BOLT; 5MM-.80 X 25MM	4	08319	P WASHER; FLAT SS	2	08269	X AIR FILTER	1	RU-4600

If you need any assistance please call 1-800-858-3333 to speak with a representative in our Customer Service Center before returning the product.

NOTE: FAILURE TO FOLLOW INSTALLATION INSTRUCTIONS AND NOT USING THE PROVIDED HARDWARE MAY DAMAGE THE INTAKE TUBE, THROTTLE BODY AND ENGINE.

TO START:

1. Turn off the ignition and disconnect the negative battery cable.
NOTE: Disconnecting the negative battery cable erases pre-programmed electronic memories. Write down all memory settings before disconnecting the negative battery cable. Some radios will require an anti-theft code to be entered after the battery is reconnected. The anti-theft code is typically supplied with your owner's manual. In the event your vehicles' anti-theft code cannot be recovered, contact an authorized dealership to obtain your vehicles anti-theft code.



2. Disconnect the MAF sensor.



3. Disconnect the A/T sensor.



4. Remove the two clips that secure the fresh air inlet tube.



5. Firmly pull up to disconnect the fresh air inlet tube.



6. Turn the fresh air inlet tube upside down to unclip the A/T sensor wire harness.



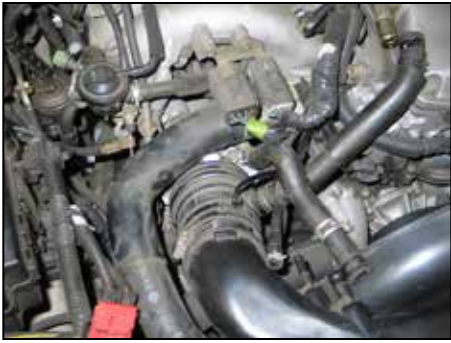
7. Unclip the four clips that secure the factory air box lid.



8. Loosen and remove the two bolts that secure the factory intake tube.



9. With pliers unclip the following hoses: the CCV hose, EGRC solenoid valve hose, and the vent hose.



10. Loosen the hose clamp at the throttle body.



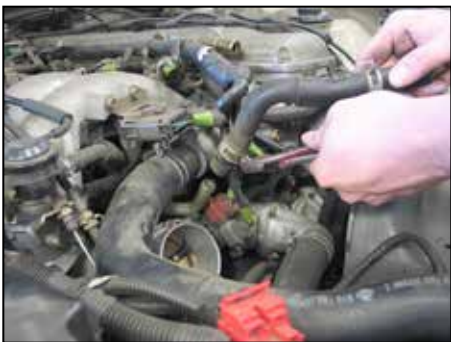
11. Remove the factory intake tube.
NOTE: Unclip the vent hose from the intake kit.



12. Remove the bolt and two nuts that secure the lower factory air box.



13. Pull up to remove the lower factory air box.
NOTE: K&N Engineering, Inc., recommends that customers do not discard factory air intake.



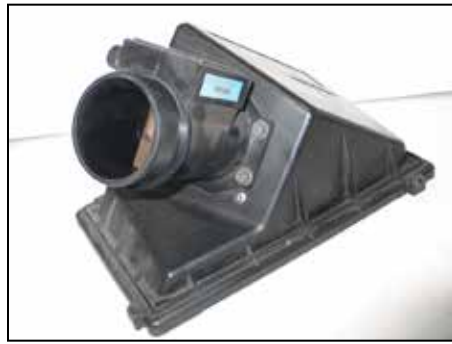
14. With pliers, unclip the EGRC solenoid valve hose from the EGRC solenoid.



15. Remove the A/T sensor from the factory lower air box.



16. Loosen the hose clamp on the MAF sensor to disconnect the factory intake tube from the MAF sensor.



17. Loosen the four bolts that hold the MAF sensor to the factory air box lid.



18. Attach the silicone hose with the provided hose clamps to the throttle body as shown.



19. Place the provided gasket on the filter adapter, install the vent tube and secure with the hardware provided, and then install silicone hose onto vent tube.



20. Place the heat shield on the MAF sensor as shown, with the gasket (10493) and 5mm hardware provided.



21. Place the 2nd provided gasket (10493) on the heat shield as shown.



22. Place the filter adapter onto the heat shield and then secure with the provided hardware.



23. Attach the edge trim to the heat shield. It may be necessary to trim for proper fit.

24. Attach the K&N® air filter to the filter assembly.



25. Remove the rubber grommet from the A/T sensor as shown.



26. Attach the A/T sensor to the vent tube on the filter adapter.



27. Install the provided rubber washers onto the lower air box mounting screws as shown.



28. Install the bracket onto the mounting screws and then secure with the provided hardware.



29. Attach the provided hose clamps and silicone hose to the air filter assembly as shown.



30. Install the air filter assembly into the vehicle.



31. Attach to the bracket with the provided hardware.



32. Install the K&N® intake tube into the vehicle with the provided hardware.

33. Cut the 1/2"ID x 17" silicone hose into three lengths: two hose lengths of 5-1/2" and one hose length of 4-1/2".



34. Attach one 5-1/2" hose to the engine cover vent. Attach the plastic "T" to the opposite end of the hose as shown.



35. Install the 2nd 5-1/2" hose, attaching it to the EGRC solenoid and the plastic "T" as shown.



36. Attach the 4-1/2" hose to the K&N® intake tube and then to the open vent on the plastic "T".



37. Reconnect the vent hose to the K&N® intake tube.

38. Secure all hardware and hose clamps at this time.



39. Reconnect the A/T sensor.

NOTE: Wrap the wire over the tube once, then plug in.



40. Re-connect the MAF sensor.



41. Reconnect the vehicle's negative battery cable. Double check to make sure everything is tight and properly positioned before starting the vehicle.

42. It will be necessary for all K&N® high flow intake systems to be checked periodically for realignment, clearance and tightening of all connections. Failure to follow the above instructions or proper maintenance may void warranty.

ROAD TESTING:

1. Start the engine with the transmission in neutral or park, and the parking brake engaged. Listen for air leaks or odd noises. For air leaks secure hoses and connections. For odd noises, find cause and repair before proceeding. This kit will function identically to the factory system except for being louder and much more responsive.

2. Test drive the vehicle. Listen for odd noises or rattles and fix as necessary.

3. If road test is fine, you can now enjoy the added power and performance from your kit.

4. K&N Engineering, Inc., requires cleaning the intake system's air filter element every 100,000 miles. When used in dusty or off-road environments, our filters will require cleaning more often. We recommend that you visually inspect your filter once every 25,000 miles to determine if the screen is still visible. When the screen is no longer visible some place on the filter element, it is time to clean it. To clean and re-oil, purchase our filter Recharger® service kit, part number 99-5050 or 99-5000 and follow the easy instructions.

NOT LEGAL FOR SALE OR USE ON ANY POLLUTION CONTROLLED MOTOR VEHICLE IN CALIFORNIA OR STATES ADOPTING CALIFORNIA EMISSION PROCEDURES.

See knfilters.com for CARB status on each part for a specific vehicle