



INSTALLATION INSTRUCTIONS FOR PART 99-9101

APPLICATIONS

2000-2003 Audi A6

99-9101

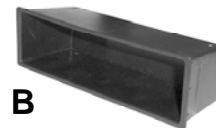


KIT FEATURES

- DIN Head Unit Provisions with Pocket
- Stacked-DIN Head Unit Provisions

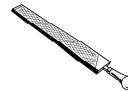
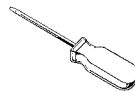
KIT COMPONENTS

A) Radio Housing | B) Pocket



TOOLS REQUIRED:

86-9001 Head Unit Removal Keys | Flat Blade Screwdriver | File



1-800-221-0932



www.metraonline.com

© COPYRIGHT 2004 METRA ELECTRONICS CORPORATION

TABLE OF CONTENTS

- **Dash Disassembly**
 - **2000-2003 Audi A6** ----- **1**

- **Kit Assembly**
 - **DIN Head Unit Provision with Pocket** ----- **2**
 - **Stacked DIN Head Unit Provisions** ----- **3**

- **Final Assembly** ----- **4**

- **Notes** ----- **5**

2000-2003 Audi A6

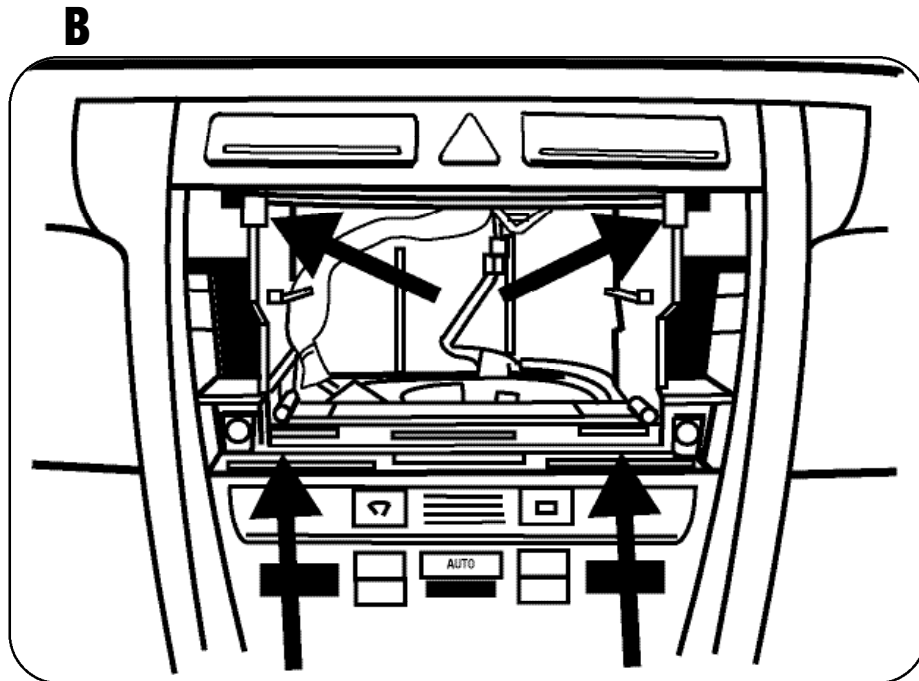
- 1 Disconnect the negative battery terminal to prevent an accidental short circuit.
- 2 Insert Metra's 86-9001 into the slots in the factory head unit and pull the unit out.



Figure A

- 3 Disconnect the wiring.
- 4 File down the dash cavity about 1/8 inch in the 4 locations pictured.

Figure B



DIN Head Unit Provision with Pocket

A



- 1 Slide the DIN cage into the Radio Housing and secure by bending the metal locking tabs down.

Figure A

B



- 2 Slide the after-market head unit into the cage and secure.

Figure B

C



- 3 Snap the pocket into the Radio Housing until secure.

Figure C

STACKED DIN HEAD UNIT PROVISIONS

- 1** Slide the DIN cages into the Radio Housing and secure by bending the metal locking tabs down.
- 2** Slide the after-market DIN head units into the cages until secure.

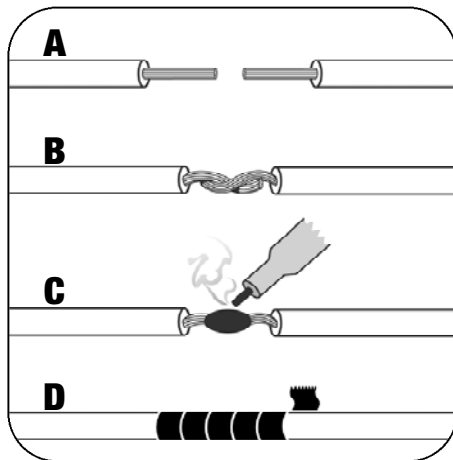
**KIT ASSEMBLY**

FINAL ASSEMBLY

- 1** Locate the factory wiring harness in the dash and make the connection as shown. Metra recommends using the proper mating adapter and making the connections as shown. (Isolate and individually tape off the ends of any unused wires to prevent electrical short circuit.)
- 2** Re-connect the negative battery terminal and test the unit for proper operation.
- 3** Reassemble radio and dash assemblies in reverse order of disassembly.

FINAL WIRING CONNECTIONS

Make wiring connections using the EIA color code chart shown below and the instructions included with the head unit. Metra recommends making connections as shown below; Strip, Splice, Solder, Tape. Isolate and individually tape off ends of any unused wires to prevent electrical short circuit.



- A) Strip wire ends back 1/2"**
- B) Twist ends together**
- C) Solder**
- D) Tape**

METRA / EIA WIRING CODE

12V Ignition / Acc . . . Red	Right Front (+) Gray
12V Batt / Memory . . Yellow	Right Front (-) Gray / Black
Ground Black*	Left Front (+) White
Power Antenna Blue	Left Front (-) White / Black
Amp Turn-On Blue / White	Right Rear (+) Violet
Amp Ground Black / White	Right Rear (-) Violet / Black
Illumination Orange	Left Rear (+) Green
Dimmer Orange / White	Left Rear (-) Green / Black

***NOTE:** When Black a wire is not present, ground radio to vehicle chassis.
All colors may not be present on all leads due to manufacturer's specifications.



99-9101

NOTES



1-800-221-0932



www.metraonline.com