

# SPEED BY SPECTRE™

## Intake Installation Instructions P/N 9945

Year/Make/Model/Engine

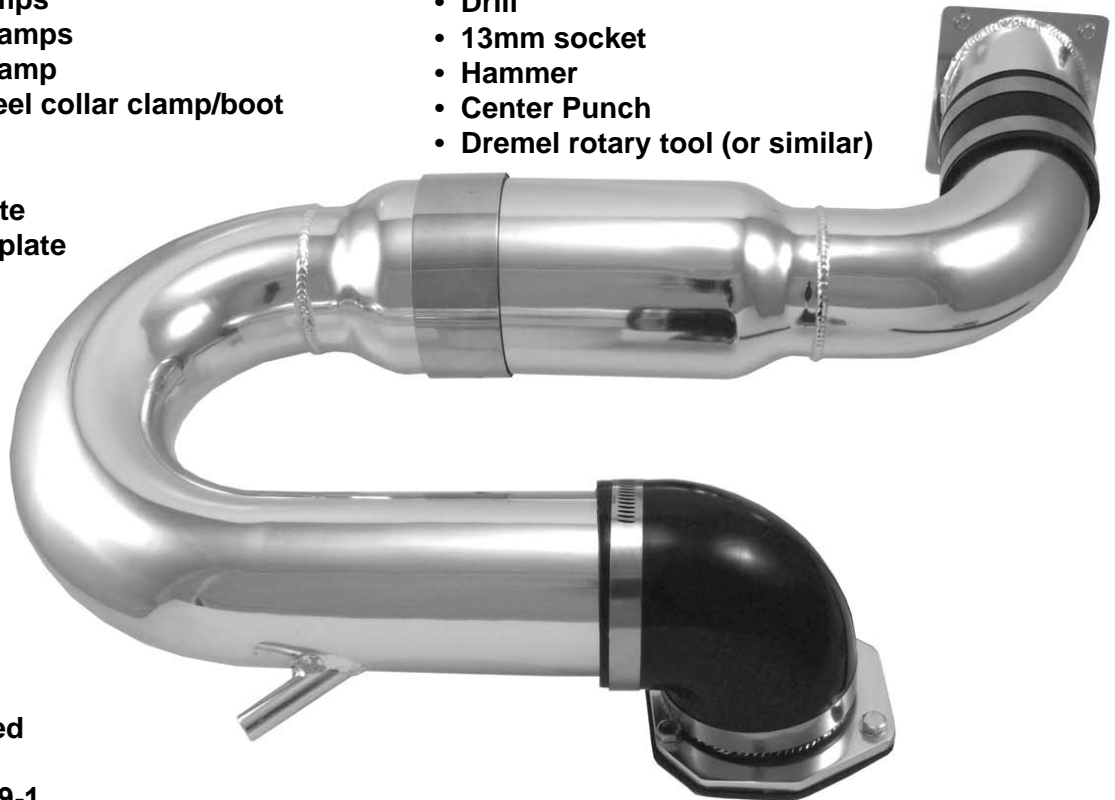
1987-1990 Jeep Cherokee 4.0L

### Parts List

- 1- Intake tube
- 1- Intake tube w/filter chamber
- 1- 889833 Air filter
- 1- 3" 90° Elbow boot
- 1- Throttle body adapter plate
- 1- Throttle body adapter plate gasket
- 1- Cowl mount
- 4- Screws
- 1- 12" 3/8" Breather hose
- 1- Coupler
- 4- 3" Hose clamps
- 2- 3/8" Hose clamps
- 1- 5/8" Hose clamp
- 1- Stainless steel collar clamp/boot
- 3- M6 Bolts
- 3- M6 Washers
- 1-Cowl Template
- 1- Oil Cap Template

### Tools Required:

- Phillips Screwdriver
- 1/4" nut driver
- 5/16" or 8mm nut driver (or flat blade screwdriver)
- 10mm deep socket
- Ratchet
- 4" extension
- 1/8" drill bit
- 3" Hole saw
- T-30 torx
- Drill
- 13mm socket
- Hammer
- Center Punch
- Dremel rotary tool (or similar)



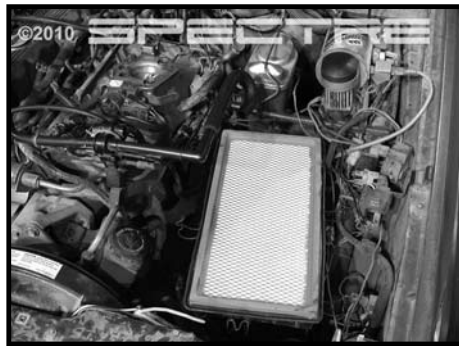
Legal for use on  
pollution controlled  
vehicles  
C.A.R.B E.O.# D-629-1  
for applications listed  
here

This kit comes with a high flow Spectre hpR lifetime filter.  
It is factory pre-oiled and ready to install. For cleaning  
instructions, visit our website –  
[www.speedbyspectre.com](http://www.speedbyspectre.com)



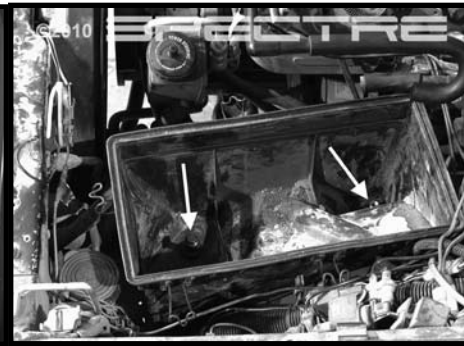
### Step 1

**Safety first!** Before you begin the installation, make sure that the vehicle is in park with the parking brake set. Disconnect the negative battery terminal and verify all components listed are present.



### Step 2

Remove the three T-30 Torx screws that secure the stock intake hose to the throttle body and disconnect the vent hoses from air box. Unclip the air box lid and lift the lid/intake hose assembly from engine compartment. Remove the air filter. Remove the nut & bolts holding the lower air box in place.



### Step 3

Remove the lower air box. Clean (scrape as necessary) the mounting surface of the throttle body. **Caution: Be careful not to get any debris into the throttle body.**



### Step 4

Install throttle body gasket and throttle body adapter plate to throttle body using the supplied M6 bolts and washers. Torque mounting bolts to 10 ft-lb. **Caution: Over-tightening of the throttle body adapter plate mounting bolts may damage the throttle body.**



### Step 5

Insert air filter into the short intake tube (with the filter housing) until the lip of the filter is in contact with the edge of the tube. Install the collar clamp boot halfway over the filter housing and position the collar clamp over the boot. Insert the long tube into the boot, positioning it as shown. Snug up the clamp, but do not fully tighten as you will need to rotate the tubes to position them in a future step.



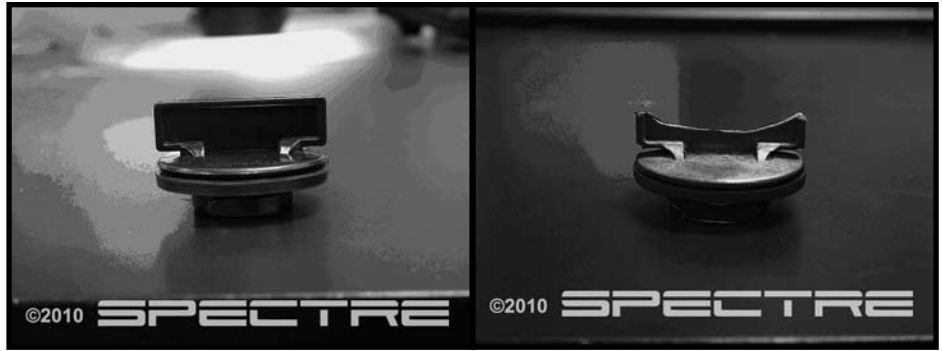
### Step 6

Install long end of the supplied 90° boot on intake tube assembly and snug up with the supplied 3" clamp. Install the supplied 3" coupler and cowl mount on the other end of the intake tube assembly as shown. Do not fully tighten clamps at this time.



#### Step 7

You will need to drill a 3" hole in the cowl for the fresh air source for your intake. Before you drill, take a high quality image of your VEHICLE EMISSION CONTROL MAINTENANCE INFORMATION sticker, print it and keep it with the vehicle. Although no pertinent information will be cut out, it is best to have this information at hand should it be necessary.



#### Step 8

Remove oil cap and cover opening with a cloth towel (to prevent anything from falling into the engine) and tape the supplied oil cap template to the cap. Use a sharpie or similar permanent marker and trace the outline onto the oil cap. Mount the oil cap securely in a bench vise. **Caution: Do not over tighten the vise or damage to the oil cap will occur.** Use a Dremel rotary tool (or similar tool) and remove the material outlined. Use a hand file to remove any remaining burrs or sharp edges. Remove cloth towel and reinstall oil cap.



#### Step 9

Position the intake tube assembly over the throttle body adapter, make sure the tube is level to the engine as shown and tighten the clamp on the boot. Rotate the end with the filter housing until the cowl mount is located as shown (if necessary, move the wiring down to allow clearance). Mark the location of the top holes in the cowl mount so you can drill them in the next step.



#### Step 10

Remove the intake tube assembly and remove the cowl mount from the intake assembly. Drill 1/8" holes at the locations marked in the previous step. Install the cowl mount using two of the supplied screws and mark the location of the lower holes and drill them. Once you have all four holes drilled, remove the cowl mount and tape the supplied template to the cowl to show the location of the center of the 3" hole. Use a hammer and center punch to make a mark through the paper to show the center of the hole. Use a 3" Hole saw to drill through the cowl. **Caution: When removing the piece of cowl it will be hot and very sharp!**



**Step 11**  
Install the cowl mount with the supplied screws. Install the 3" coupler and 2 supplied 3" clamps.



**Step 12**  
Insert the intake tube assembly into the coupler on the cowl and then position the intake tube on the throttle body adapter as shown in step #8. Fully tighten the 4 worm gear clamps and the filter housing collar clamp.



**Step 13**  
Remove the valve cover vent hose from the original tube going to the air cleaner and install it on the bung on the intake tube as shown and secure it with the supplied 5/8" clamp. The original tubing can be removed, but it is not necessary to do so.



**Step 14**  
Locate the hose that connects to the port on the carbon canister (located on the passenger side of the engine near the firewall) labeled CARB BOWL. Install the supplied 3/8" breather hose with the supplied 3/8" clamps to this port. Install the other end of the hose to the bung on the intake tube and tighten the clamp. The original hose can be removed, but it is not necessary to do so.



**Step 15**  
Make sure that all clamps and hardware are fully tightened at this time. Reconnect the battery cable and start the engine and let it warm up. Shut it off and inspect the installation once more for any loose clamps, wires, or hardware. Test drive & enjoy!

If you have any difficulties or questions regarding the installation of this intake system, contact the Spectre Performance Technical Department by email - Tech@spectreperformance.com or by phone 1-800-821-4868 Monday thru Thursday 6:00am to 4:30pm PST.

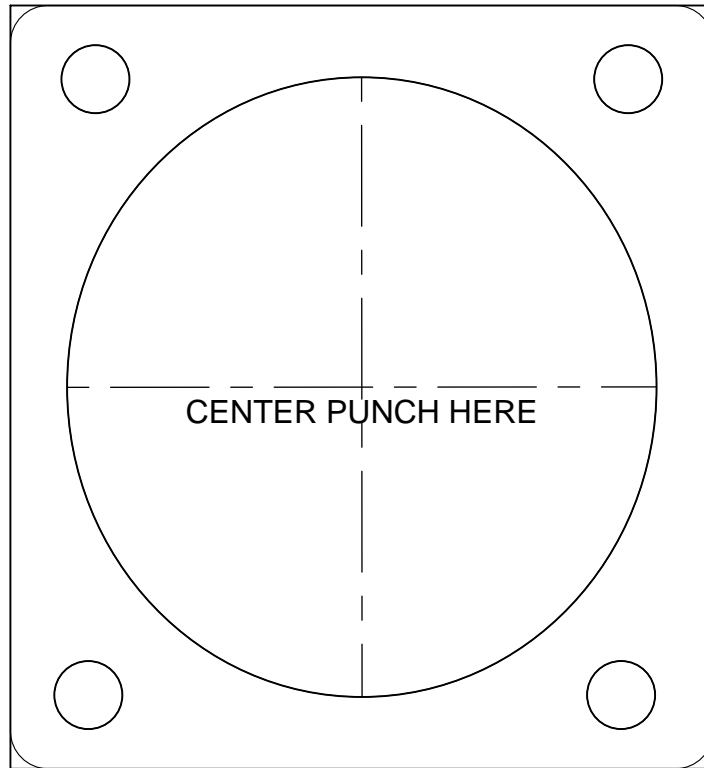
Product Info:  
Performance Air Induction  
System P/N 9945

**SPEED BY SPECTRE™**

(909) 673-9800  
www.spectreperformance.com

**P/N 9945**  
**1987-1990 Jeep Cherokee 4.0L**  
**Instructions Supplement**

Use with step 10



Oil Cap Template  
Use with step 8

