



INSTALLATION INSTRUCTIONS

For 65800, 65801, 66355, 69250, 69251 Rear Bumper And Tire Carrier For Jeep XJ Cherokee

Your safety, and the safety of others, is very important. To help you make informed decisions about safety, we have provided installation and operating instructions and other information on labels and in this guide. This information alerts you to potential hazards that could hurt you or others. It is not possible to warn you about all potential hazards associated with this product, you must use your own good judgment.

CARELESS INSTALLATION AND OPERATION CAN RESULT IN SERIOUS INJURY OR EQUIPMENT DAMAGE. READ AND UNDERSTAND ALL SAFETY PRECAUTIONS AND OPERATING INSTRUCTIONS BEFORE INSTALLING AND OPERATING THIS PRODUCT.

This guide identifies potential hazards and has important safety messages that help you and others avoid personal injury or death. **WARNING** and **CAUTION** are signal words that identify the level of hazard. These signal words mean:

▲WARNING signals a hazard that *could* cause serious injury or death, if you do not follow recommendations.

▲CAUTION signals a hazard that *may* cause minor to moderate injury, if you do not follow recommendations.

This guide uses **NOTICE** to call attention to important mechanical information, and **NOTE**: to emphasize general information worthy of special attention

NOTICE

Equipment Failure

Failure to observe these instructions could result in equipment failure.

- Always** Take time to fully read and understand this Installation Instruction and the related Warnings and Cautions.
- Always** tighten all nuts and bolts securely, per the installation instructions.
- Never** exceed capacity of tire carrier. This tire carrier has a maximum tire carrying capacity of a 35" Tire.
- Always** periodically inspect bumper for damage or deformation. Any damage or deformation must be corrected immediately.

NOTE

- This installation requires cutting square holes to gain access to the sub-frame.

NOTE

- This installation manual contains instructions for both 1984-1996 Cherokees and 1997-2001 Cherokees. Some steps are for specific models and will be noted.

Read installation and operating instructions thoroughly.

PARTS LIST FOR 65800 (Rear Bumper For Tire Carrier)

PART NO.	QUANTITY	DESCRIPTION
65777	1	Bumper Center Section
65799	1	Left Hand Bumper End cap
65798	1	Right Hand Bumper End cap
65806	1	Bracket Kit
65770	1	LH Frame Bracket
65769	1	RH Frame Bracket
65768	1	Hardware Kit

PARTS LIST FOR 65801 (Rear Bumper)

PART NO.	QUANTITY	DESCRIPTION
65777	1	Bumper Center Section
65809	1	Left Hand Bumper End cap
65810	1	Right Hand Bumper End cap
65806	1	Bracket Kit
65770	1	LH Frame Bracket
65769	1	RH Frame Bracket
65768	1	Hardware Kit

PARTS LIST FOR 66355 (Tire Carrier)

PART NO.	QUANTITY	DESCRIPTION
65780	1	Tube Assembly
62929	1	Tire Mount
65802	1	Shaft Support Bracket
65767	1	Hardware Kit
65786	1	Detent Pin

PARTS LIST FOR 69250 (Rear Bumper For Tire Carrier)

PART NO.	QUANTITY	DESCRIPTION
69246	1	Bumper Center Section
69244	1	Left Hand Bumper End cap
69245	1	Right Hand Bumper End cap
69249	1	Bracket Kit
69247	1	LH Frame Bracket
69248	1	RH Frame Bracket
65768	1	Hardware Kit

PARTS LIST FOR 69251 (Rear Bumper)

PART NO.	QUANTITY	DESCRIPTION
69246	1	Bumper Center Section
70131	1	Left Hand Bumper End cap
70132	1	Right Hand Bumper End cap
69249	1	Bracket Kit
69247	1	LH Frame Bracket
69248	1	RH Frame Bracket
65768	1	Hardware Kit

TORQUE SPECIFICATIONS

<u>BOLT SIZE</u>	<u>TORQUE</u>
1/4 inch	8-10 ft. lbs.
3/8 inch	32-35 ft. lbs.
7/16 inch	50-54 ft. lbs.
1/2 inch	55-65 ft. lbs.
5/8 inch	80-90 ft-lbs.

1. Remove the factory bumper and bumper brackets from vehicle. On 1997-2001 Models with plastic side fender skirting behind the rear wheels, remove the plastic side fender skirting when removing the bumper and keep the plastic side skirting for later installation.
2. Using a hack saw blade, die grinder or saws-all, cut access holes in the back of the sub frame to gain clearance for the frame brackets. **See Figure 1.** Carefully trim the square hole so the edge is flush with the inside of the sub-frame tubes. Be sure to only trim to the inside edges of the sub frame walls. The bottom of the cutout must be flush to insure the brackets fit properly. Once the sides and bottom are trimmed, the sheet metal flap can be pushed in and bent upward into the sub-frame.

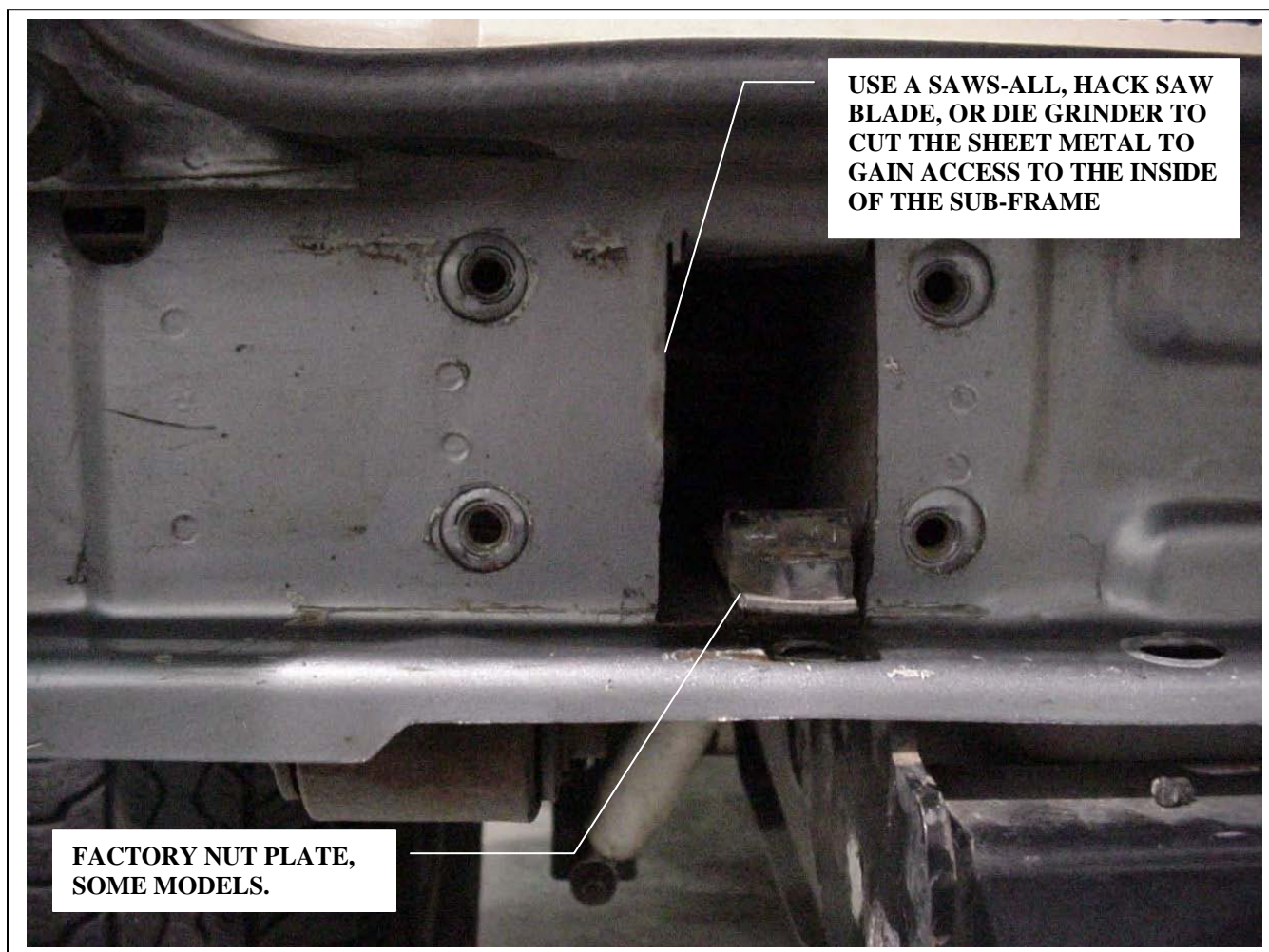


Figure 1, Access Holes in Sub-frame



WARNING



Cutting operations can cause flying metal chips. **WEAR SAFETY GOGGLES.** Flying metal chips can cause eye injury.

3. Once the square holes are cut, remove the back three bolts on the bottom of the sub-frame on the driver's side and back four bolts of the sub-frame on the passenger's side. **See Figure 2.** Some vehicles may not have the factory nut plates. If it does not have them, use the ones supplied in the bracket kit. Use the three-nut plate for the driver's side and the four-nut plate for the passenger's side.

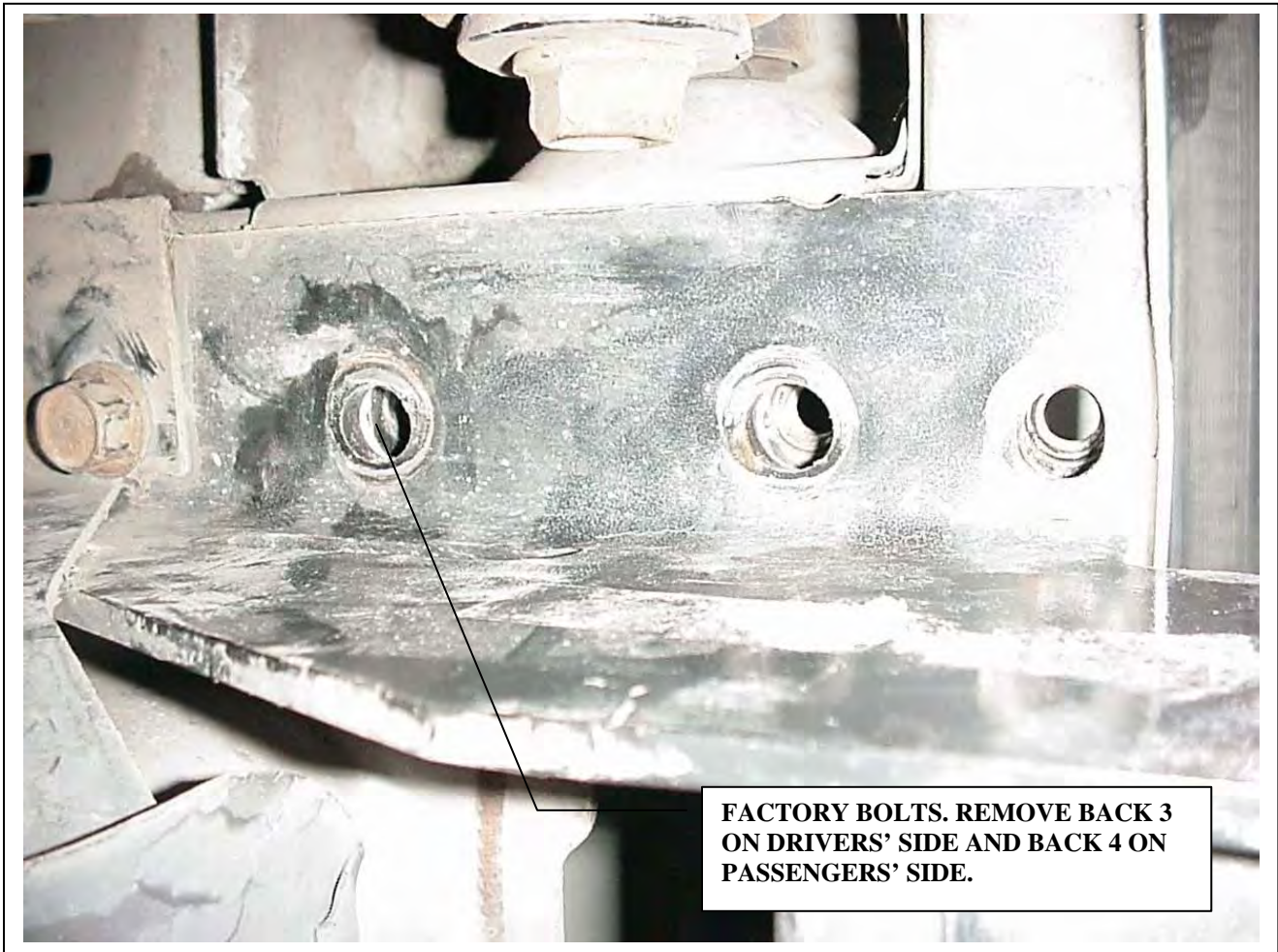


Figure 2, Diagram of Sub-frame and Bolt locations

4. After removing the bolts, pry up the nut plate located inside the sub-frame. This plate is riveted to the bottom of the sub-frame. Use a chisel and hammer to break the rivet. Install the frame brackets between the nut plate and the frame. Be sure that the remaining part of the rivet is flush with the bottom of the sub-frame. **See Figure 3.**

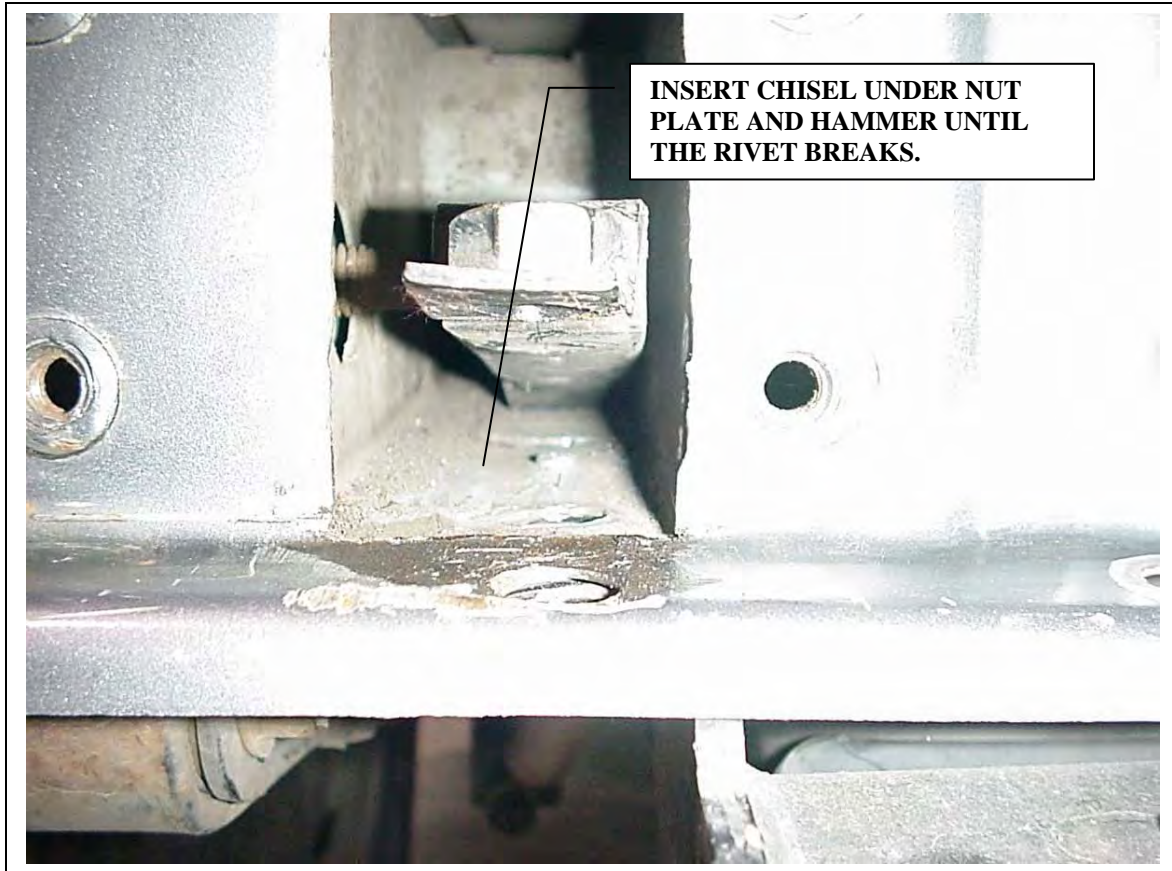


Figure 3, Factory Nut Plates

5. Install the frame brackets. Loosen the upper shackle bolt on the rear leaf spring. This bolt is attached to the sub-frame. Do not remove the bolt; loosening it is required for installation of frame brackets. Slide the frame brackets into the sub-frame. Insert the frame brackets into the sub frame tubes so that the nut plates are inside of the frame bracket. Use a screwdriver to hold the nut plate down on the inside of the frame bracket and re-install the factory bolts through the sub-frame, bumper bracket, and nut plate. If you are not using factory nut plates, place the supplied nut plate inside the frame bracket and use the supplied 1/2" hardware. When all of the bolts are loosely installed in the bottom, install the factory bumper bolts that go in the back panel of the uni-body through the frame bracket and into the factory holes. Snug all of the bolts and measure from the outside of the passengers' side to the outside of the drivers' side. **See Figure 4.**



Figure 4, Rear View of bumper bracket installation

- The factory holes in the back of the frame have been found to vary greatly in location. For the majority all four holes on each side will line up. On some older vehicles it has been found that one on each side may not line up. Adjust the brackets so they are level with the vehicle. If one of the holes does not line up, do not force the bracket to install the bolt. Leave the bolt out. When all of the frame bolts are re-installed, measure across the bumper brackets. The measurement should be **52.9 inches for 1984-1996 models** and **53.9" for 1997-2001 models**. The bumper brackets have slotted holes to allow for side-to-side movement. Adjust the bumper brackets and torque all of the bolts on the back and bottom of the frame. **See Figure 5.**

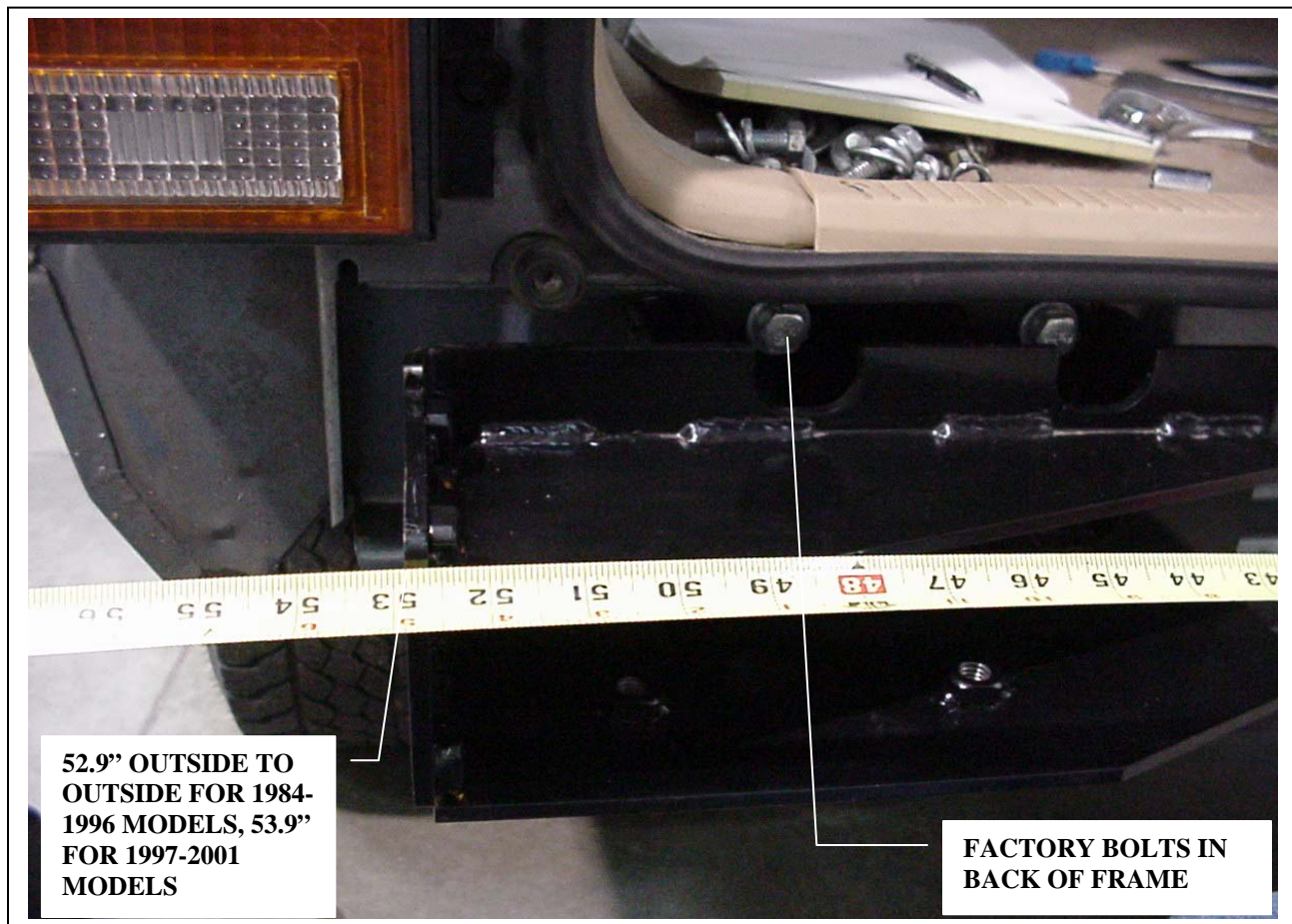


Figure 5, Bracket Adjustment

- Install the bumper center section to the bumper brackets using the hardware provided. Slip the bumper over the frame brackets and install the 7/16 bolts, lock washers and washers. Be sure to use the smaller of the two 7/16 flat washers on the ends, there should be 8 of these. Install the 7/16 bolts, lock washers and larger flat washers in the bottom of the bumper. The outer diameter of the small flat washer is .950" and the outer diameter of the larger flat washer is 1.250". Use the smaller flat washers on the ends to allow for a flush fit when the end caps are bolted on. **See figure 6A and 6B.** When all 10 bolts are installed, torque them to the torque table specs at the beginning of this manual.

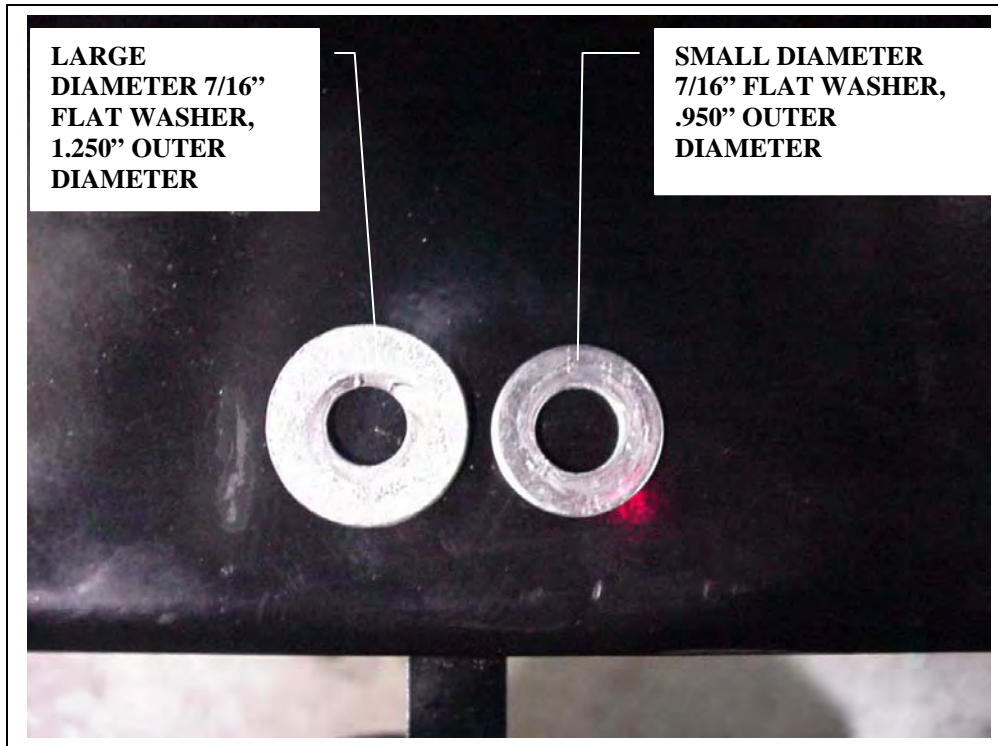


Figure 6A, Bumper center installation, washer diameters

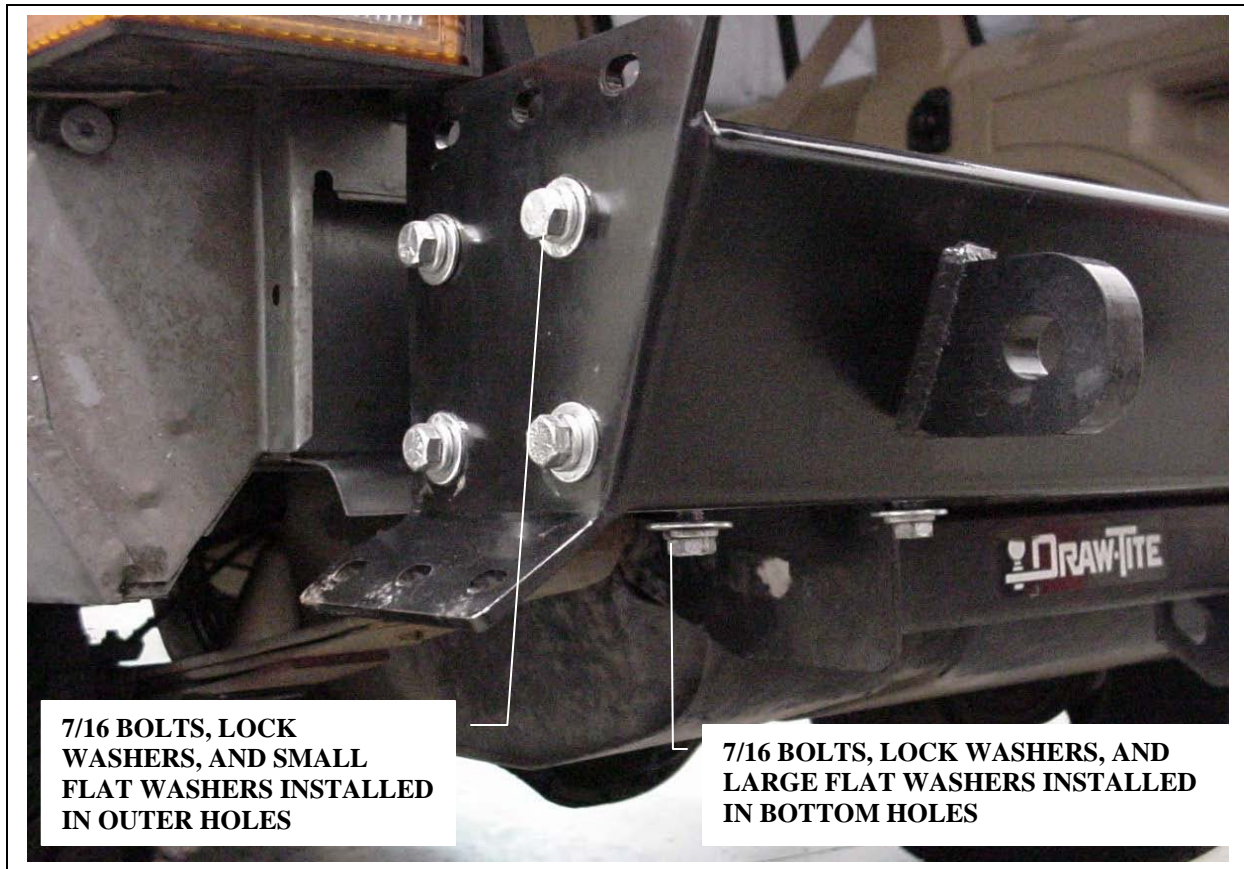


Figure 6B, Center Section Bolts

8. Before attaching the bumper ends on **1997-2001 models** it will be necessary to trim and install the plastic side fender skirts behind each rear wheel. Hold the bumper end in place on the end of the bumper and measure the distance between the forward edge of the bumper end and the back edge of the body. The measurement is critical to a clean fit between the bumper ends and the plastic side fender skirting. It is best to take a measurement from the top and bottom of the gap between the bumper end and the back edge of the body.

Once the measurements are made, temporarily install the plastic side fender skirting and trace a line on the inside of the skirting using the back edge of the body as a guide. **See Figure 7A.** Remove the skirting. Place marks on the skirting using the gap distance of the bumper end and body. Draw a cut line on the inside of the plastic using the marks and the line as a guide. It may be necessary to double-check the measurements before cutting the plastic. Once you feel confident, cut the plastic side fender skirting using a saws-all or hack saw, using the marked line as a guide. **See Figure 7B.**

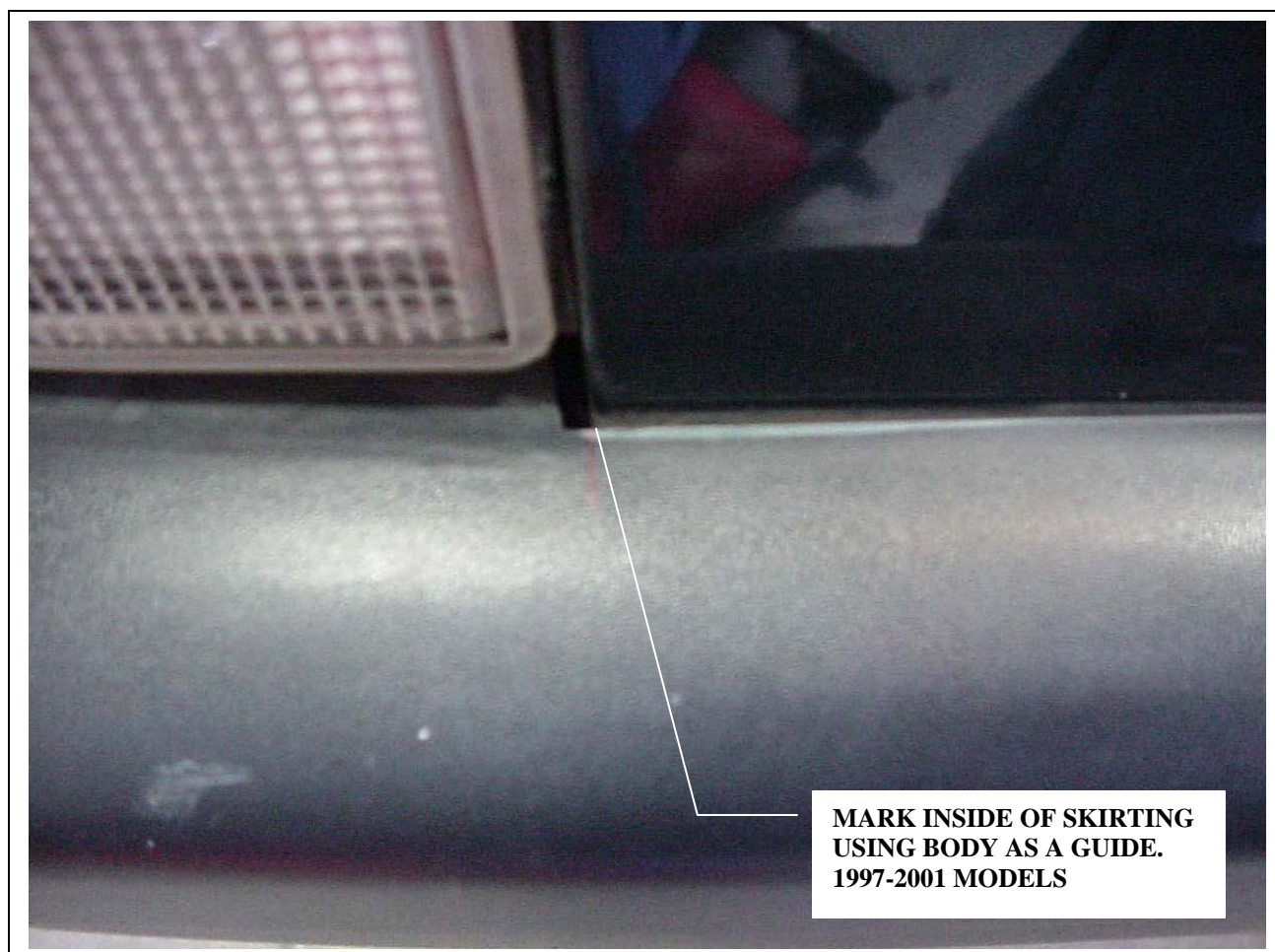


Figure 7A, Plastic Side Fender Skirting. Mark inside using body as a guide.

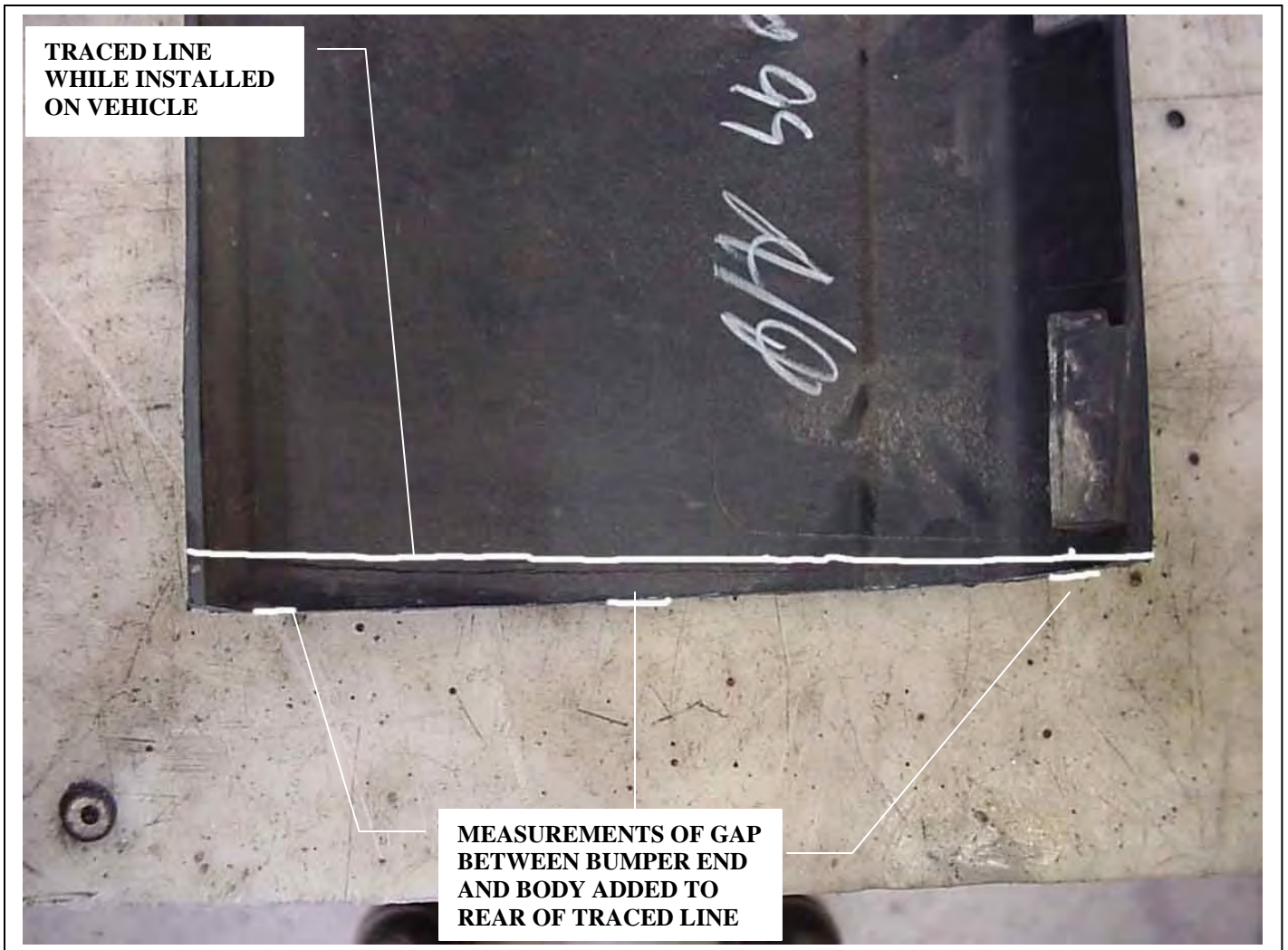


Figure 7B, Traced line on inside of plastic side fender skirting with marks of gap measurements previously recorded (Cut line)

Once the plastic side fender skirting is marked with the gap added, trim the plastic side fender skirting using a hack saw. Be careful not to scratch the outside of the plastic side fender skirting. Once both sides are trimmed, install the plastic side fender skirting back onto the vehicle. Line up the plastic tabs and push the skirting forward into the factory body clamps. Install the screw into the bottom forward factory hole.



WARNING



Cutting operations can cause flying metal chips. **WEAR SAFETY GOGGLES.** Flying metal chips can cause eye injury.

Use **Figure 8A and 8B** to properly fix the bottom rear portion of the plastic side fender skirting to the vehicle body. Using a pair of vise grips, clamp the bottom of the skirting to the bottom edge of the body. Using a $\frac{1}{4}$ " drill bit and drill motor, drill a hole through the plastic and the bottom edge of the body. Install a $\frac{1}{4}$ " bolt and flat washer through the skirting and

body. Install the ¼" flat washer and lock nut onto the bolt and torque. Repeat this for the opposite side.



Figure 8A, Drill Hole in Plastic Side Fender Skirting



Figure 8B, Bolt Bottom Rear of Plastic Side Fender Skirting

9. Install the bumper ends to the bumper center section using the 3/8 bolts and lock washers. Adjust the fit front to back with the center section and torque the 3/8 bolts. Be sure that the driver's side and passenger's side bumper ends are level to each other to ensure proper fit if installing a rear spare tire carrier. **See Figure 9.**

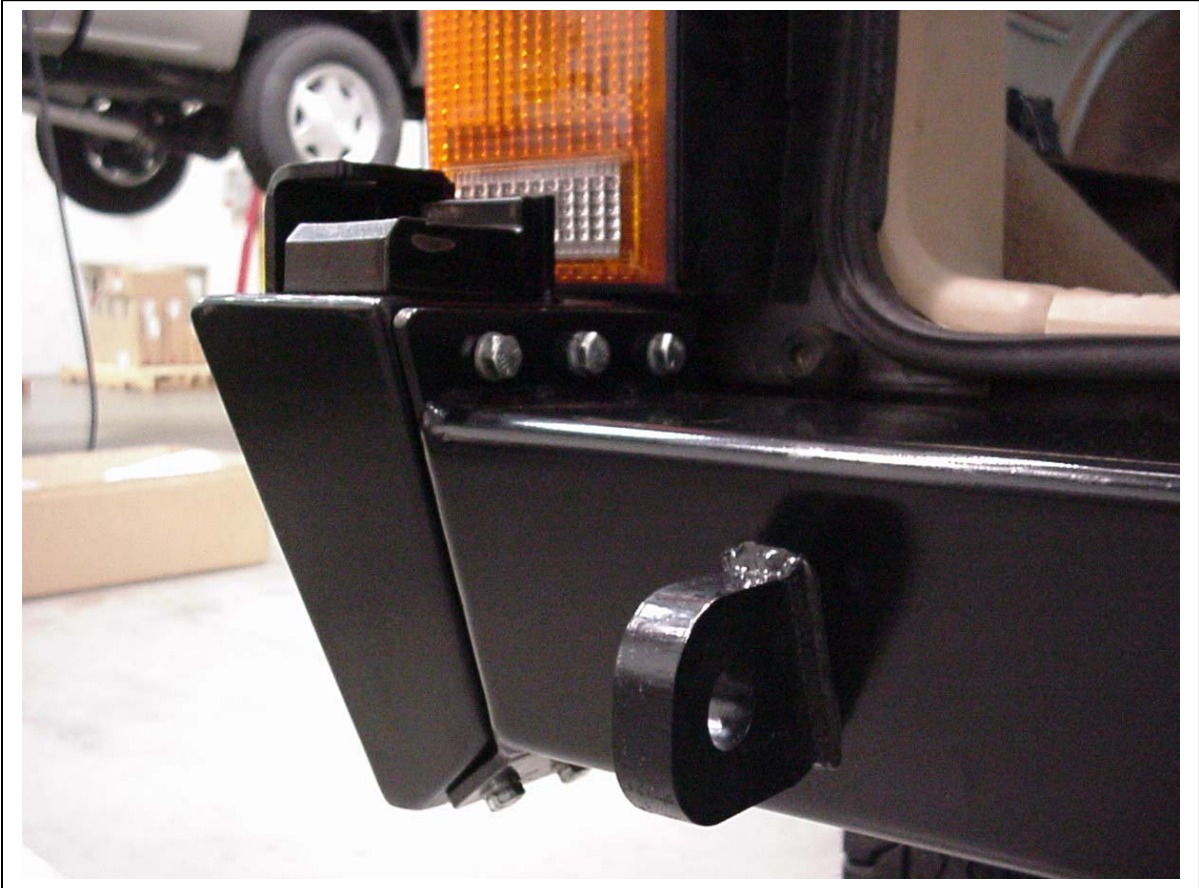


Figure 9A, Drivers' Side Endcap

When installing passengers' side endcap for the tire carrier, adjust the angularity with the bolts snug. Make sure the post is parallel to the back of the vehicle and then torque the bolts. It may be necessary to adjust the driver's side bumper end once the passenger's side bumper end is adjusted to the body.



Figure 9B, Tire Carrier End caps

10. If you are not installing a tire carrier on a 1997-2001 model, you are finished. If you are not installing a tire carrier on a 1984-1996 model, skip to step 17 to finish your installation. If you are installing a tire carrier, proceed with the following steps.
11. Unpack the tire carrier from its box and remove the hardware kit. Open the hardware kit and remove the four metal shims and the white nylon washer. Apply a light coat of grease to the post.

12. Four 1/8" shims are provided for adjusting the height of the tire carrier. The nominal height will have two metal shims slipped onto the post, the white nylon washer and then the tire carrier assembly. Use this nominal height as your starting point and close the tire carrier and check for the fit with the polyurethane pad. **See Figure 10A.** The tire carrier assembly should have to be picked up slightly to get it on the pad. **See Figure 10B.** If the tire carrier is too high remove one or two of the shims as required and repeat the process. If the tire carrier is too low, add a shim under the nylon washer. When the desired location is obtained, slip the remaining shims onto the post above the tire carrier assembly. When all of the components are installed, they should be flush with the top of the post.



Figure 10A, Shims on post

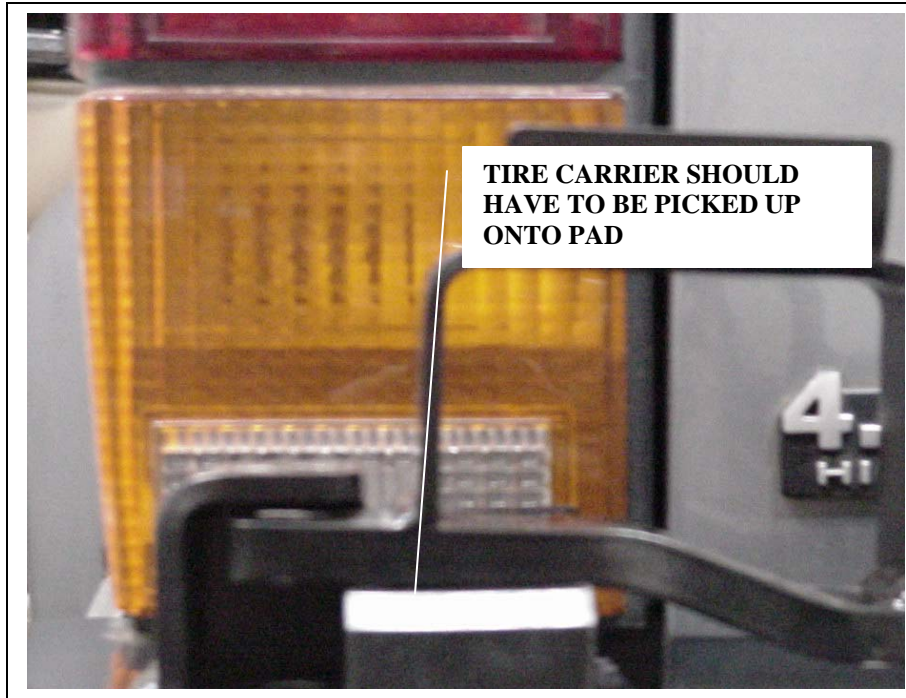


Figure 10B, Tire Carrier assembly and Polyurethane pad

13. Install the post support bracket to the post and passengers side end cap using the hardware provided. Loosely install the 5/8" bolt, lock washer, and flat washer through the bracket and into the top of the post. Install 7/16" bolts and lock washers through the bracket and into the passenger's side end cap. Torque the 7/16" bolts first and then the 5/8" bolt. **See Figure 11.**

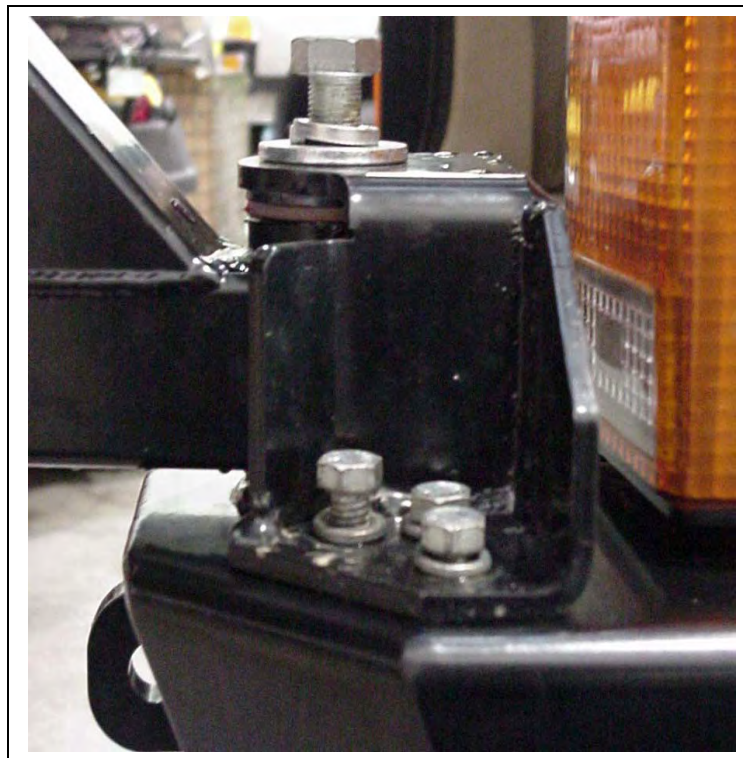


Figure 11, Support Bracket

14. Install the detent pin cable to the driver's side end cap using the hardware provided. There is a small hole in the back of the stop to mount the end of the cable on the pin. Torque the #10 bolt and nut to 3-5 ft/lbs. Close the tire carrier and install the detent pin into the bumper. **See Figure 12.**

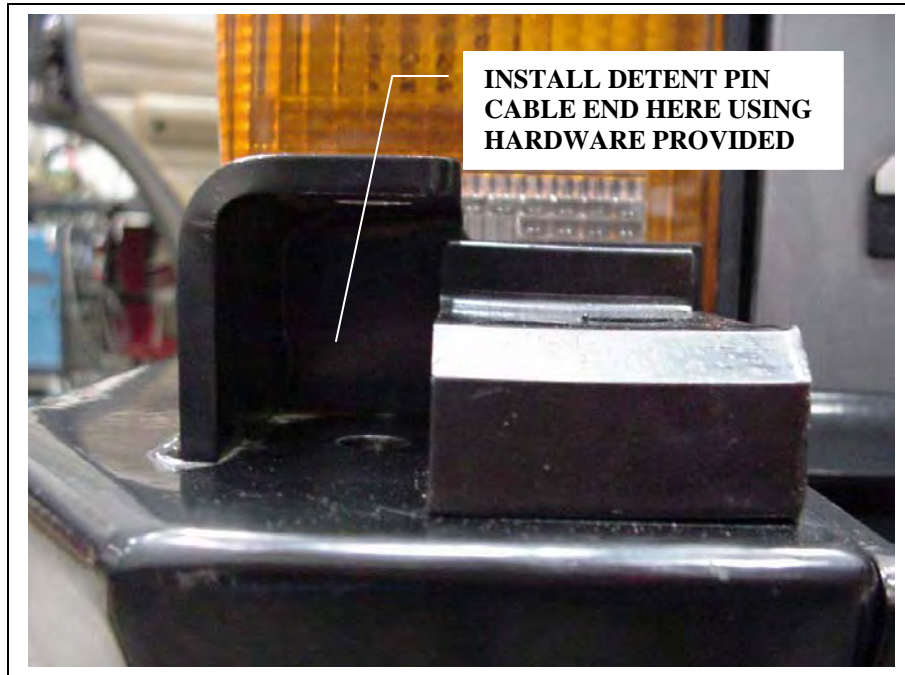


Figure 12, Detent Pin

15. Install the license plate to the bracket on the tube assembly. **See Figure 13.**



Figure 13, Licence Plate installation

16. Install the zerk fitting into the small pivot tube on tube assembly. Grease the pivot and re-torque periodically. **See Figure 14.**

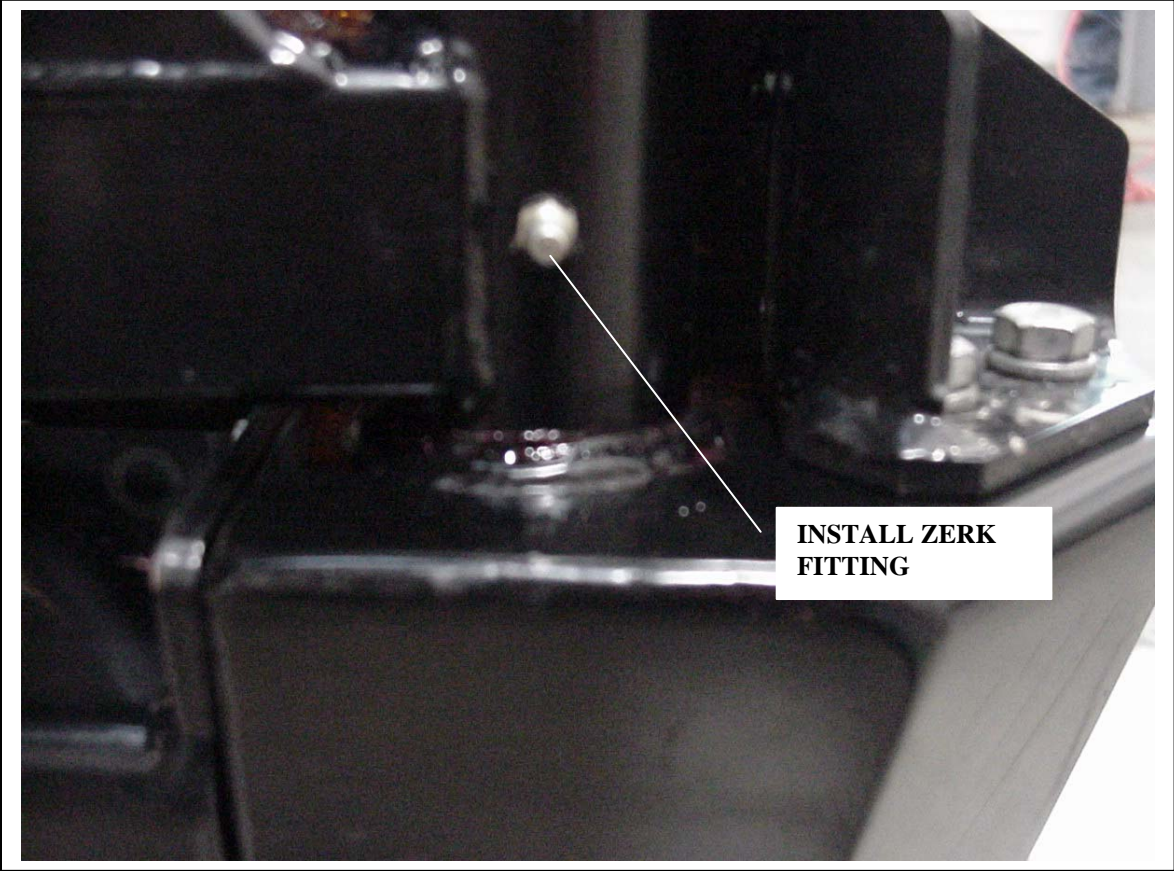


Figure 14, Zerk Fitting

17. Install center-mounting bolts on **1984-1996 models only**. Install the remaining two 7/16" bolts with washers behind the bumper. Install a washer, lock washer, and nut onto each bolt and torque. **See Figure 15.**

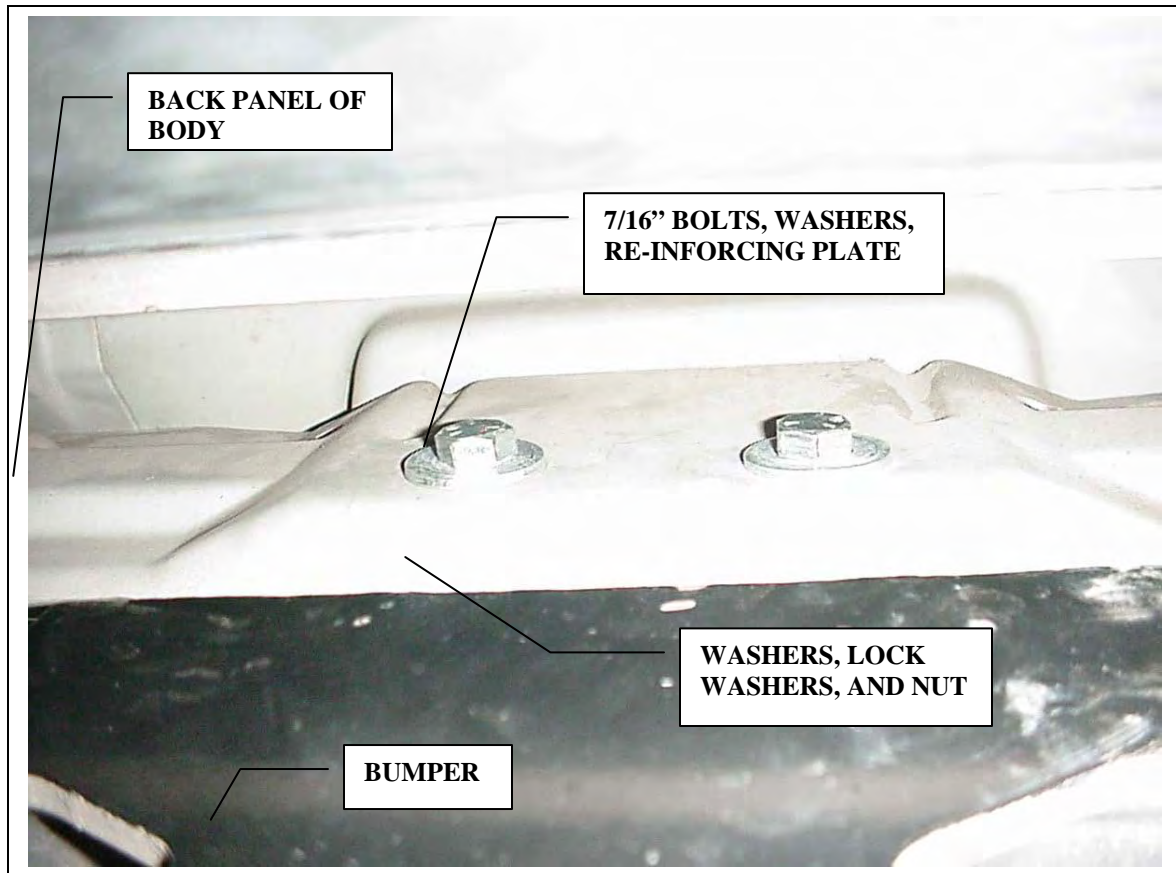


Figure 15, Center Mounting Bolts

18. Close the tire carrier. Attach the spare tire to the tire-mounting bracket. Use the three wheel studs supplied in the hardware kit. The wheel studs can be pressed in or use a vise and hammer to install them. They can also be installed by installing the tire with lug nuts to pull the studs in when tightening the lug nuts. If you are using a 5 on 5-1/2 wheel, use the outer hole pattern. If you are using a 5 on 4-1/2 wheel, use the inner hole pattern.

19. When the studs are installed, attach the tire to the mounting bracket. Slide the tire-mounting bracket, on the backside of the wheel, into the bracket mounting tube on the tire carrier. With the tire pushed all the way in, mark the tire-mounting bracket through the hole in the tire carrier tube. Remove the tire and mounting bracket from the tire carrier. Remove the bracket from the tire and wheel. **Use Figure 16 for assembly.**

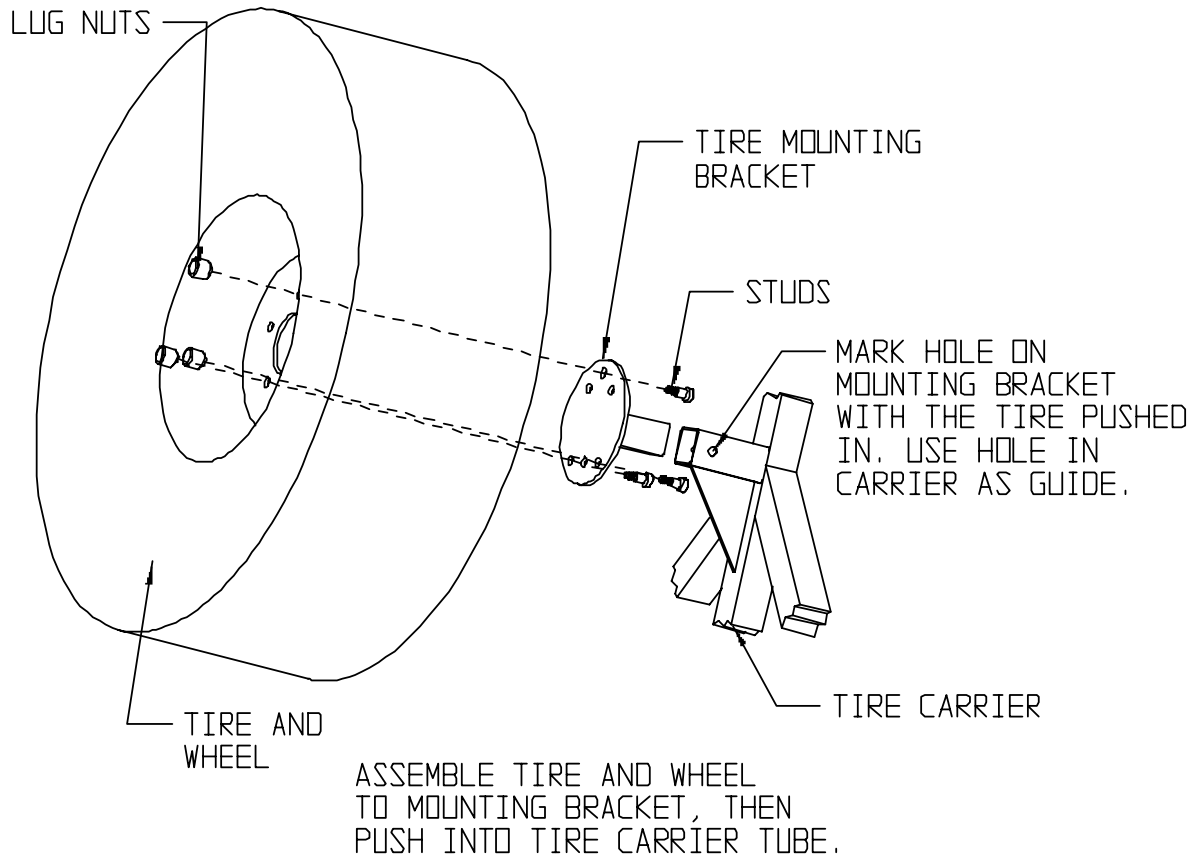


Figure 16, Tire and Wheel mounting assembly

20. Remove the tire and wheel from the mounting bracket. Using the marked location on the tire mounting bracket in the previous step, measure $\frac{1}{4}$ " back toward the wheel mounting surface. This will give the tire pre-load when mounted. Using a $\frac{1}{2}$ " drill bit, drill a hole through both sides of the tire mounting bracket at the marked location. Be sure to re-mark the hole $\frac{1}{4}$ " closer to the tire mounting surface for pre-load. **See Figure 17.**

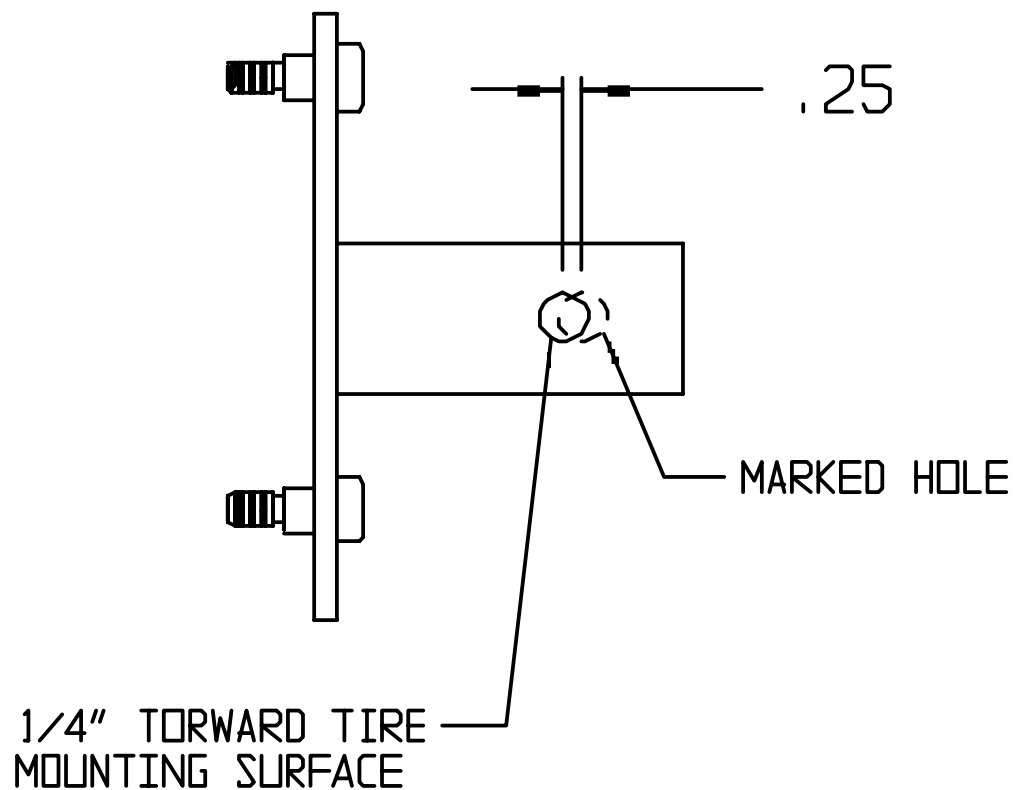


Figure 17, Drill hole



WARNING



Drilling operations can cause flying metal chips. **WEAR SAFETY GOGGLES.** Flying metal chips can cause eye injury.

21. After drilling the hole in step 17, slip the tire-mounting bracket into the tube on the tire carrier. Use the supplied 1/2" x 3" bolt, washers, and lock nut to bolt the mounting bracket to the carrier. Torque the 1/2" bolt to 55-60 ft/lbs.
22. Mount the tire and wheel assembly to the tire carrier mounting bracket using three lug nuts. Locking lug nuts can help prevent theft of the tire and wheel.