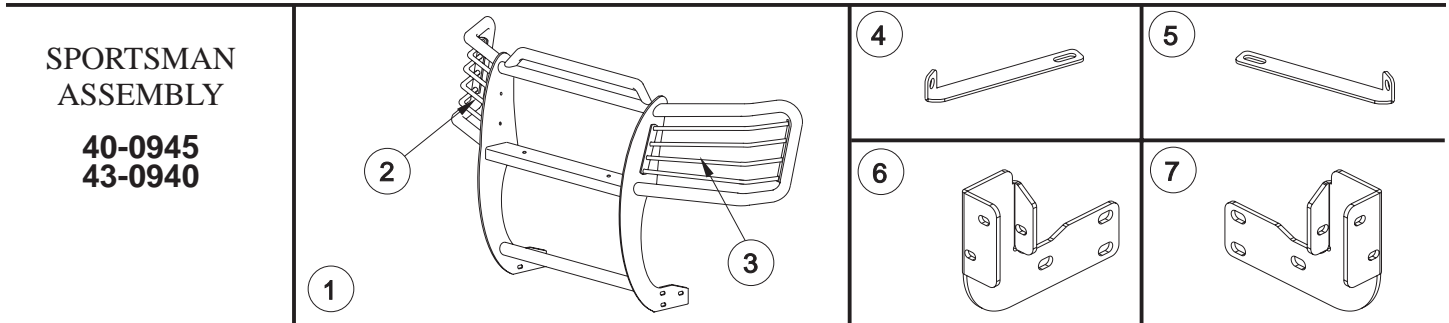




INSTALLATION INSTRUCTIONS

APPLICATION: 2002-UP CHEVY TRAILBLAZER

AUTOMOTIVE PRODUCTS, INC.



PARTS KIT CONTENTS

ITEM	QTY	DESCRIPTION	ITEM	QTY	DESCRIPTION
1	1	SPORTSMAN ASSEMBLY	14	8	3/8-16 X 1.00" HEX HEAD BOLT
2,3	2	LIGHT GUARD ASSEMBLY, PASSENGER (2) AND DRIVER (3)	15	16	3/8" FLAT WASHER
4,5	2	TOP BRACKET, PASSENGER (4) AND DRIVER (5)	16	8	3/8" LOCK WASHER
6,7	2	BOTTOM BRACKET, PASSENGER (6) AND DRIVER (7)	17	8	3/8-16 HEX NUT
8	6	1/2-13 X 1.25" HEX HEAD BOLT	18	2	M6-1.00 X 35MM HEX HEAD BOLT
9	12	1/2" FLAT WASHER	19	2	1/4" FLAT WASHER
10	8	1/2" LOCK WASHER	20	2	1/4" LOCK WASHER
11	6	1/2-13 HEX NUT	21	2	3/8-16 X 1.25" BUTTON HEAD BOLT
12	4	1/2" WILLIAMS WASHER (THICKER WASHER)	22	2	REFLECTIVE TAPE
13	2	1/2" NYLON FLAT WASHER			(FOR CHROME ASSEMBLIES ONLY)
					NOTE: NOT ALL FASTENERS WILL BE USED.

TOOLS REQUIRED

3/4" SOCKET	9/16" SOCKET	10MM SOCKET	9/16" WRENCH	7/16" WRENCH
5/32" HEX WRENCH	RATCHET	TORQUE WRENCH	FLAT TIP SCREWDRIVER	

- STEP 1.** Remove the contents from box and check for damage. Verify all parts are present. Read instructions completely before beginning.
- STEP 2.** Attach light guard assemblies as shown. **SEE FIGURE 1.**
- STEP 3.** Remove lower air dam from front bumper by removing two push in fasteners from driver and passenger side of vehicle. Pull air dam forward to remove.
- STEP 4.** Remove grille from vehicle. Locate the clips that hold grille in place. **SEE FIGURE 2.** Gently pry clips with flat screwdriver and lightly pull outward on grille. Do this at all locations.
- STEP 5.** From underneath the front of vehicle locate the front body mount. Determine passenger and side bottom mount brackets. **SEE FIGURE 3.** Install brackets inside body mount channel with 3/8" fasteners as shown. Hand tighten.

NOTE: If vehicle is equipped with underbody shield package it will be necessary to remove the front shield. If shield is to be reinstalled, both ends will need to be trimmed to fit around front mount brackets. Mounting hardware supplied with the Sportsman will still be used.

- STEP 6. With grille removed locate the two bumper cover 6mm bolts. Remove and discard the factory 6mm bolts. **SEE FIGURE 2.** Set (1) 1/2" nylon flat washer over hole 6mm bolt was removed from. Also set (2) 1/2" thick williams washers over nylon washer. Set top bracket over washers then secure with (1) M6-1.00 x 35mm hex head bolt and (1) 1/4" lock and (1) 1/4" flat washer. Hand tighten. Repeat for opposite side.
- STEP 7. Place cardboard under vehicle. Lay Sportsman on the cardboard with front side down. Align lower rear upright slots with lower rear bracket slots and fasten together using 1/2" fasteners. Hand tighten.
- STEP 8. Rotate Sportsman up towards vehicle so that remaining slots align, fasten together using remaining 1/2" hardware.
- STEP 9. Attach top brackets to Sportsman using 3/8" fasteners. Torque only 6mm bolts on bumper to 8 FT. LBS.
- STEP 10. Remove 3/8" fasteners from top brackets and two of the 1/2" bolts from each side of bottom brackets to allow Sportsman to rotate forward and reinstall grill.
- STEP 11. Rotate Sportsman up and re-attach Sportsman to top brackets. Tighten the 3/8" bolts to 30 FT. LBS. Reinstall 1/2" fasteners and torque to 65 FT. LBS.
- STEP 12. For chrome assemblies. If light glare is being experienced off the wings of the Sportsman, anti reflective tape has been supplied to reduce glare. With headlights on, note where the reflection is concentrated on the wing. Clean the wing well with a non-abrasive cleaner (rubbing alcohol works the best.) Trim the anti-reflective tape to the appropriate size where the glare was located and apply tape. **SEE FIGURE 1.**

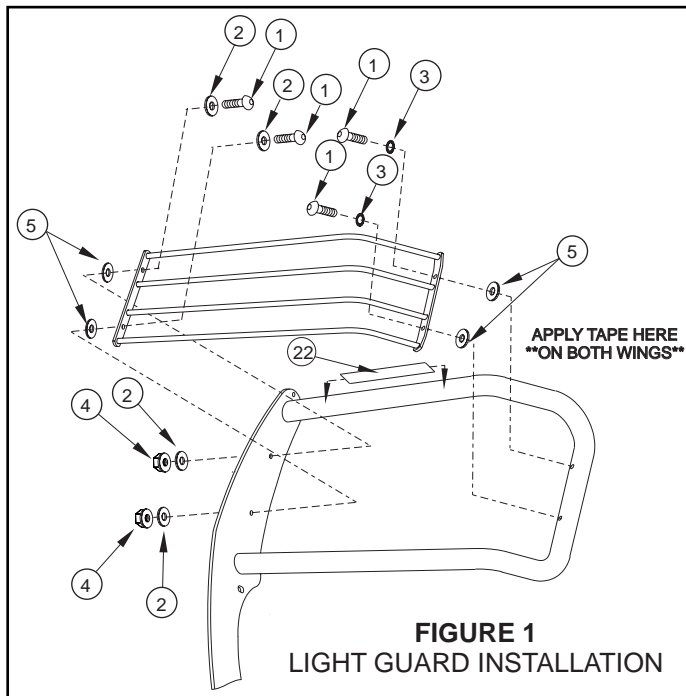


FIGURE 1
LIGHT GUARD INSTALLATION

ITEM	QTY.	DESCRIPTION
1	8	1/4-20 X 1.00" BUTTON HEAD BOLT
2	8	1/4" FLAT WASHER
3	4	1/4" INTERNAL TOOTH LOCK WASHER
4	4	1/4-20 NYLON NUT
5	8	RUBBER WASHER

NOTE: ALL FASTENERS MAY NOT BE USED.

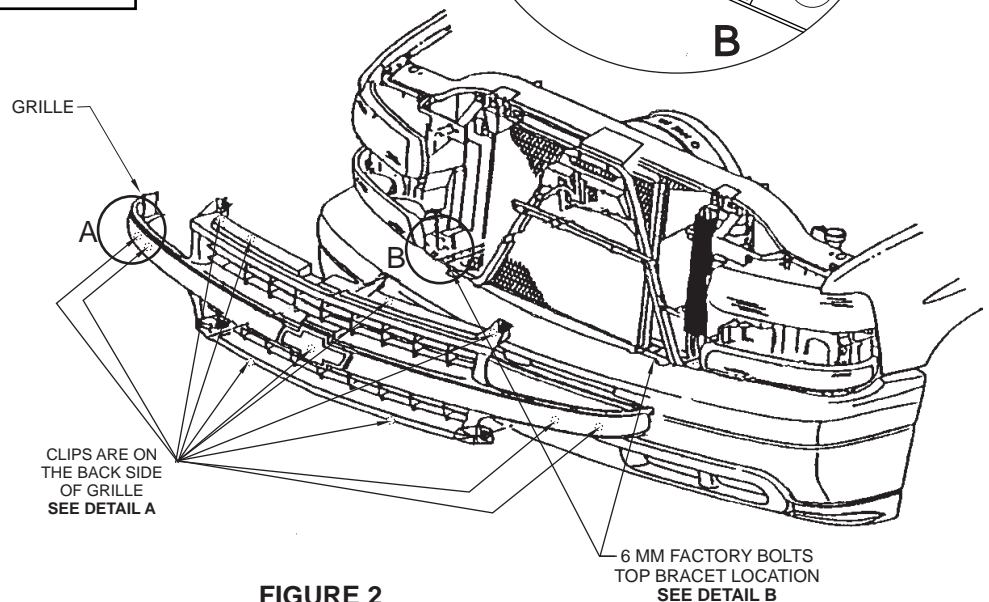
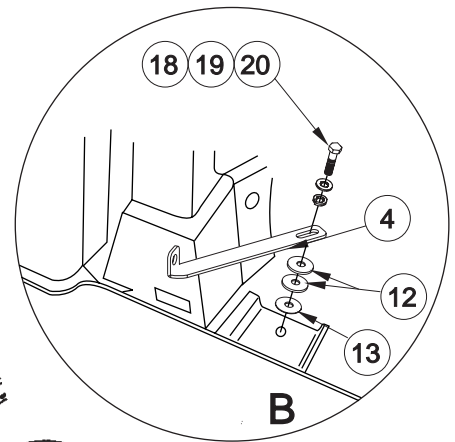


FIGURE 2

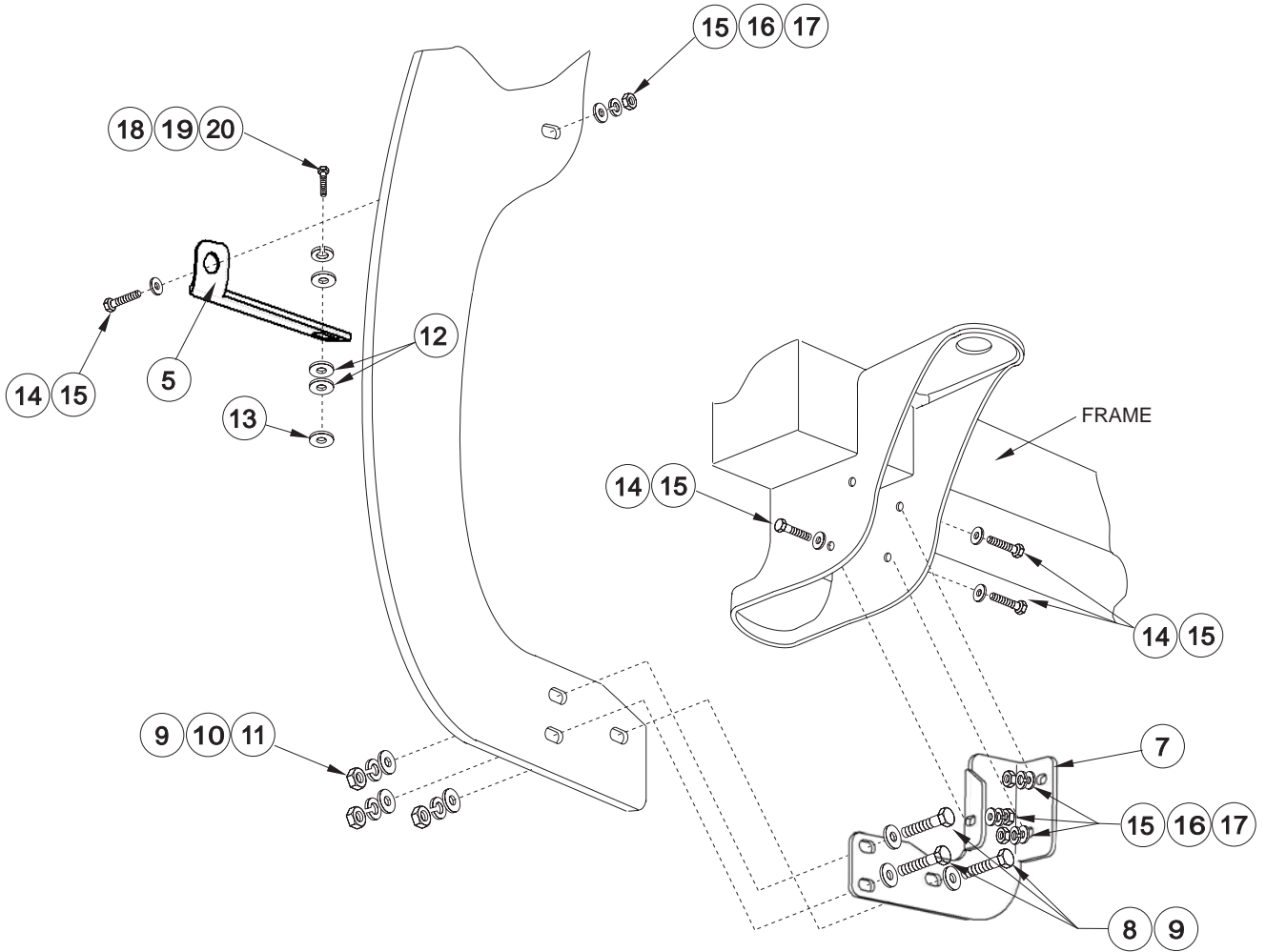


FIGURE 3
INSTALLATION VIEW OF DRIVER SIDE,
PASSENGER SIDE OPPOSITE

Finish protection - Westin products have a high quality finish that must be cared for like any other exposed finish on the vehicle. Protect the finish with a non-abrasive automotive wax (pure carnauba, for example) on a regular basis. The use of cleaner wax or any compound which contains an abrasive is detrimental, as the compounds scratch the finish and open it to corrosion.