



# INSTALLATION INSTRUCTIONS

## Trans4mer Grille Guard/Winch Mount For 2007 Chevrolet Silverado HD and GMC Sierra HD Kit 76110 (Black) and 76111 (Stainless)

Your safety, and the safety of others, is very important. To help you make informed decisions about safety, we have provided installation and operating instructions and other information on labels and in this guide. This information alerts you to potential hazards that could hurt you or others. It is not possible to warn you about all potential hazards associated with this product, you must use your own good judgment.

**CARELESS INSTALLATION AND OPERATION CAN RESULT IN SERIOUS INJURY OR EQUIPMENT DAMAGE. READ AND UNDERSTAND ALL SAFETY PRECAUTIONS AND OPERATING INSTRUCTIONS BEFORE INSTALLING AND OPERATING THIS PRODUCT.**

This guide identifies potential hazards and has important safety messages that help you and others avoid personal injury or death. **WARNING** and **CAUTION** are signal words that identify the level of hazard. These signal words mean:

**WARNING** signals a hazard that could cause serious injury or death, if you do not follow recommendations.

**CAUTION** signals a hazard that may cause minor to moderate injury, if you do not follow recommendations.

This guide uses **NOTICE** to call attention to important mechanical information, and **Note**: to emphasize general information worthy of special attention.

### **WARNING**

#### **INJURY HAZARD**

**Failure to observe these instructions could lead to severe injury or death.**

- Always** use extreme caution when drilling on any vehicle. Make sure that all fuel lines, brake lines, electrical wires, and other objects are not punctured or damaged when/if drilling on the vehicle. Thoroughly inspect the area to be drilled (on both sides of material) prior to drilling, and relocate any objects that may be damaged. Failure to inspect the area to be drilled may result in vehicle damage, electrical shock, fire or personal injury.
- Always** wear safety glasses when installing this kit. A drilling operation will cause flying material chips. Flying chips can cause eye injury.
- Always** use extreme caution when cutting and trimming during fitting.
- Always** remove jewelry and wear eye protection.
- Never** lean over battery while making connections.
- Always** insure components will remain secure during installation and operation.
- Always** tighten all nuts and bolts securely, per the installation instructions.
- Always** replace all worn or damaged parts before operating.
- Never** operate this WARN product with damaged or missing parts.

### **Caution**

#### **Moving Parts Entanglement Hazard**

**Failure to observe these instructions could lead to minor or moderate injury.**

- Always** take time to fully read and understand the installation Instructions included with this product.

**Read installation instructions thoroughly.**

### **Notice**

#### **Equipment Damage**

- Always** refer to the Operator's Manual, supplied in the winch kit, for all wiring schematics and specific details on how to wire a WARN winch product to your vehicle.

**Read Operating Manual thoroughly.**

**This WARN Trans4mer system** can be customized to give your vehicle a wide variety of looks, front-end protection and winch mounting capability. The system starts with this strong two-tube grille guard that attaches to the truck's frame with brackets designed to handle up to a 16,500 lb winch. It is durable and good looking as a stand-alone grille guard, but can be easily upgraded with some great options! You can add a third large size tube (light bar) that adds even more protection and includes tabs for mounting auxiliary lights. The tubes can be mounted in a variety of positions to achieve the look and function that you desire. You can mount a winch carrier bracket that provides a permanent mount for a Warn winch. You may also add a receiver bracket that will handle the Warn multi-mount winch system. Finally, brush guards that protect the headlights and front corners of the vehicle can be easily added to any of the options above.

**Before You Begin**

- Read and understand these Installation Instructions.
- Refer to Figure A to become familiar with the components and hardware in this kit.

**PARTS LIST**

<u>PART NO.</u>	<u>QUANTITY</u>	<u>DESCRIPTION</u>
76106/76159	2	Side Member, Black/Stainless
29366/60326	2	2.5" Grille Guard Tube, Black/Stainless
29147	4	Washer, Plastic (Black Kit only)
76152	1	Frame Extension, RH
76151	1	Frame Extension, LH
76108	1	Frame Bracket, RH
76107	1	Frame Bracket, LH
13222	2	Tow Hook, Black
13230	2	Tow Hook, Stainless
76238	2	Link Plate

**TORQUE SPECIFICATIONS**

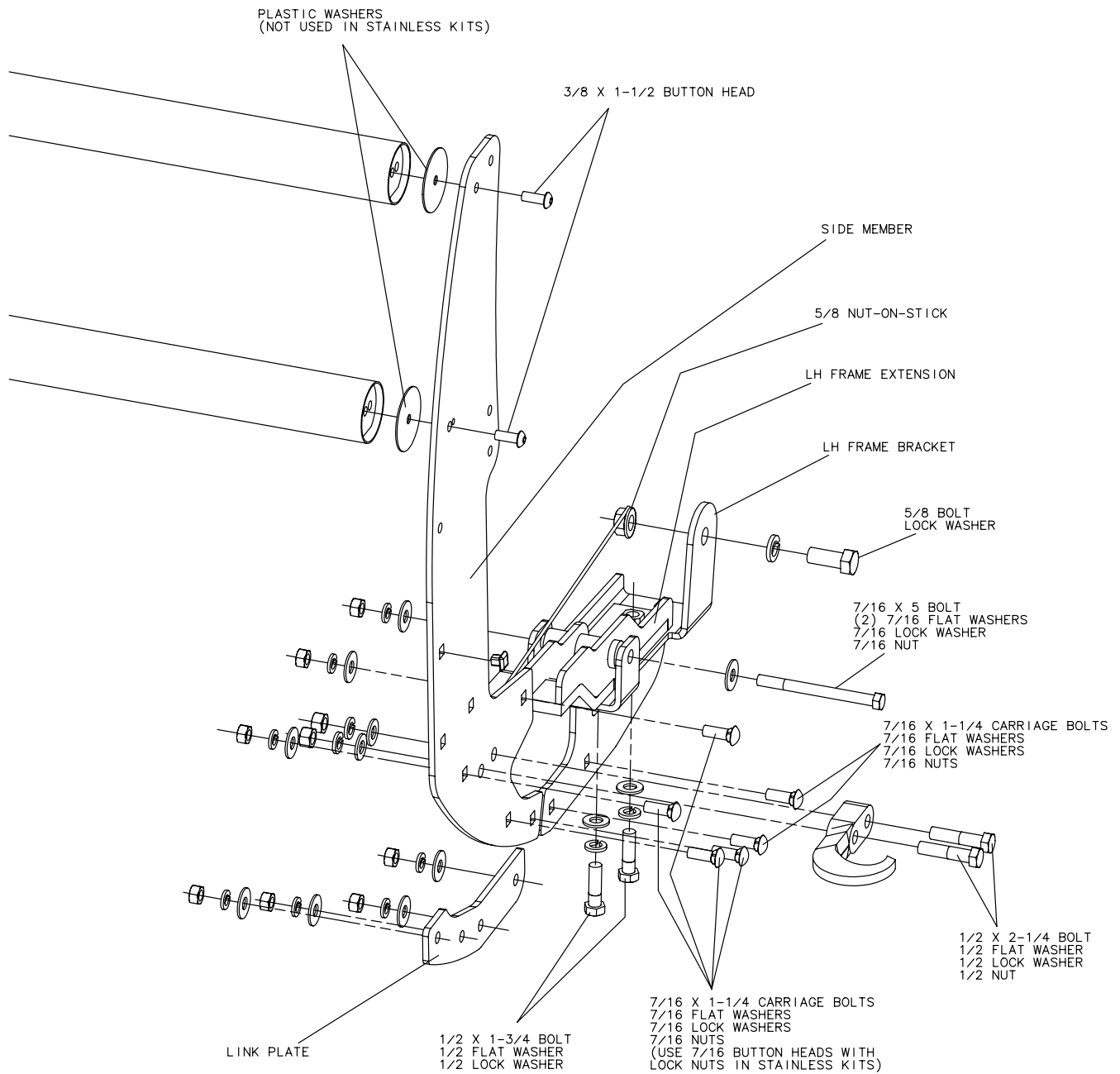
<b>BOLT SIZE</b>	<b>TORQUE</b>
3/8 inch	30 lb. ft (40.7 N-m)
7/16 inch	50 lb. ft. (67.8 N-m)
1/2 & 5/8 inch	75 lb. ft. (101.7 N-m)

**TOOLS REQUIRED**

- 15 and 21mm sockets and wrenches (Silverado)**
- 18mm socket**
- 5/8, 11/16, 3/4, 15/16 sockets and/or wrenches**
- 7/32 hex socket wrench**
- 1/4 hex socket wrench (stainless kit)**
- Utility knife or razor saw**

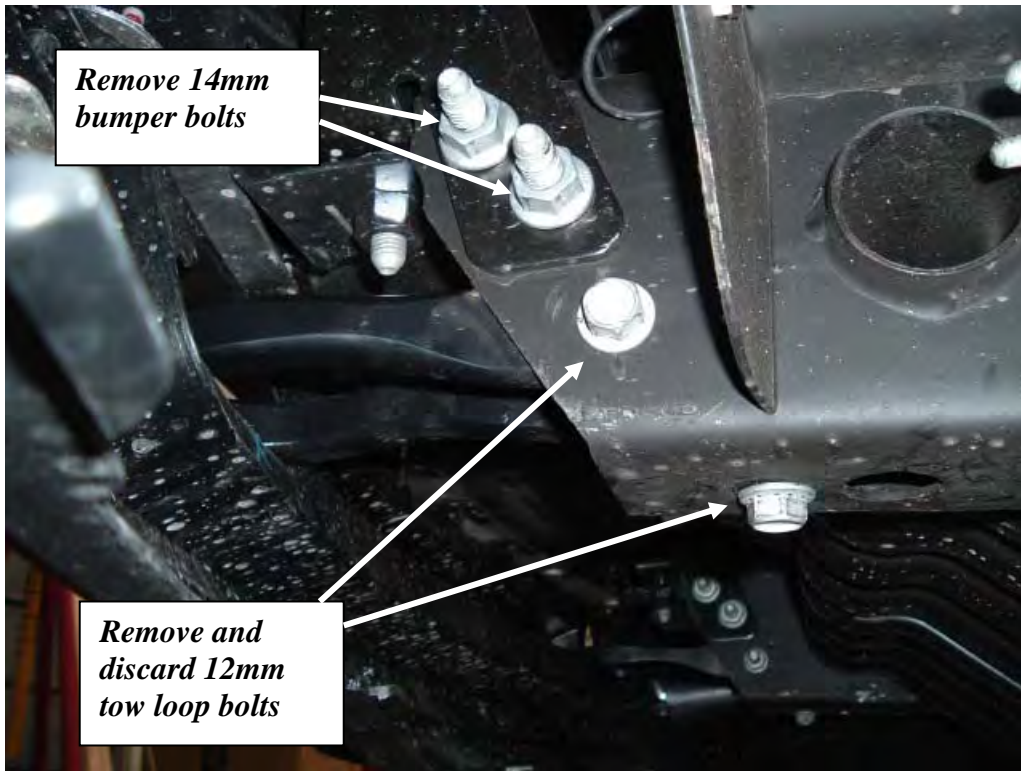
**NOTE:** Follow the instructions step by step for fastest installation. Do not securely tighten fasteners until directed to do so.

**NOTE:** Installation of the included power interrupt kit and long black winch ground cable is required for this installation due to the battery location at the rear of the engine compartment.



**Figure 1 Exploded view – Left side shown**

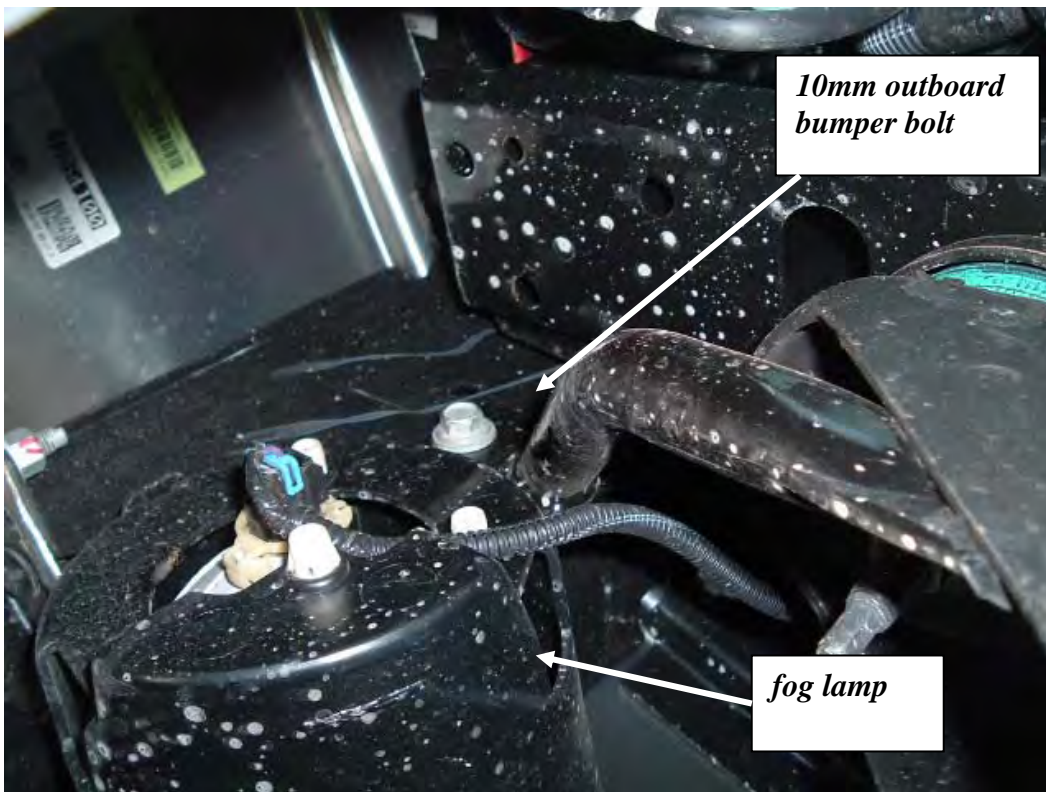
Remove the tow loops by removing the 12mm (18mm wrench) cross bolt and the 12mm bottom bolt from each. Disconnect the fog lamp wires if equipped. **Figure 2**



**Figure 2** Tow loop and bumper bolts – Left side Sierra shown; Silverado similar

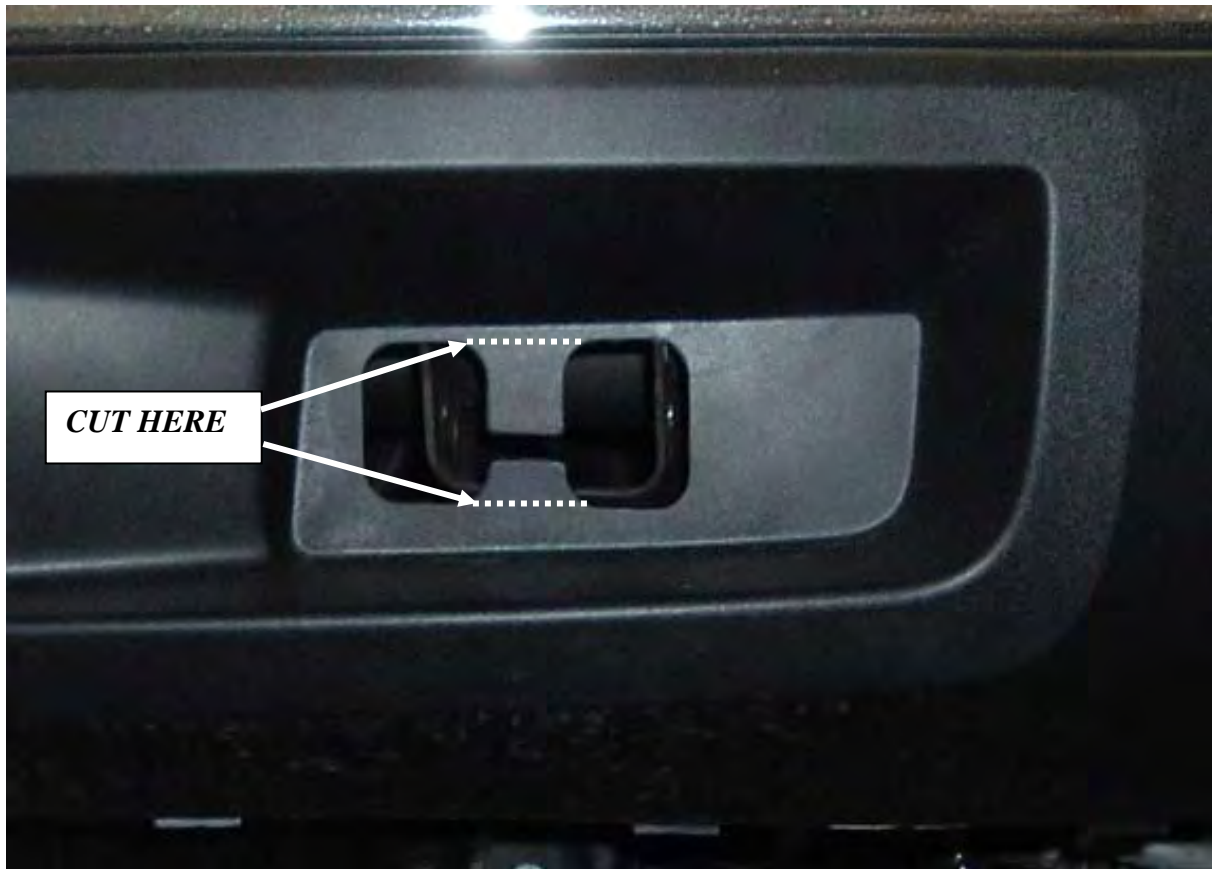
**Remove Bumper – Silverado Only**

Before removing the bumper make note of the gap between the bumper and the bottom of the grille. You will want to adjust the bumper to the same gap when you reinstall it. Support the bumper and remove four 14mm (21mm wrench) through bolts (2 per side). Remove the 10mm (15mm wrench) outboard bumper bolts (1 per side). See **Figure 2 and 3**. Remove the bumper.

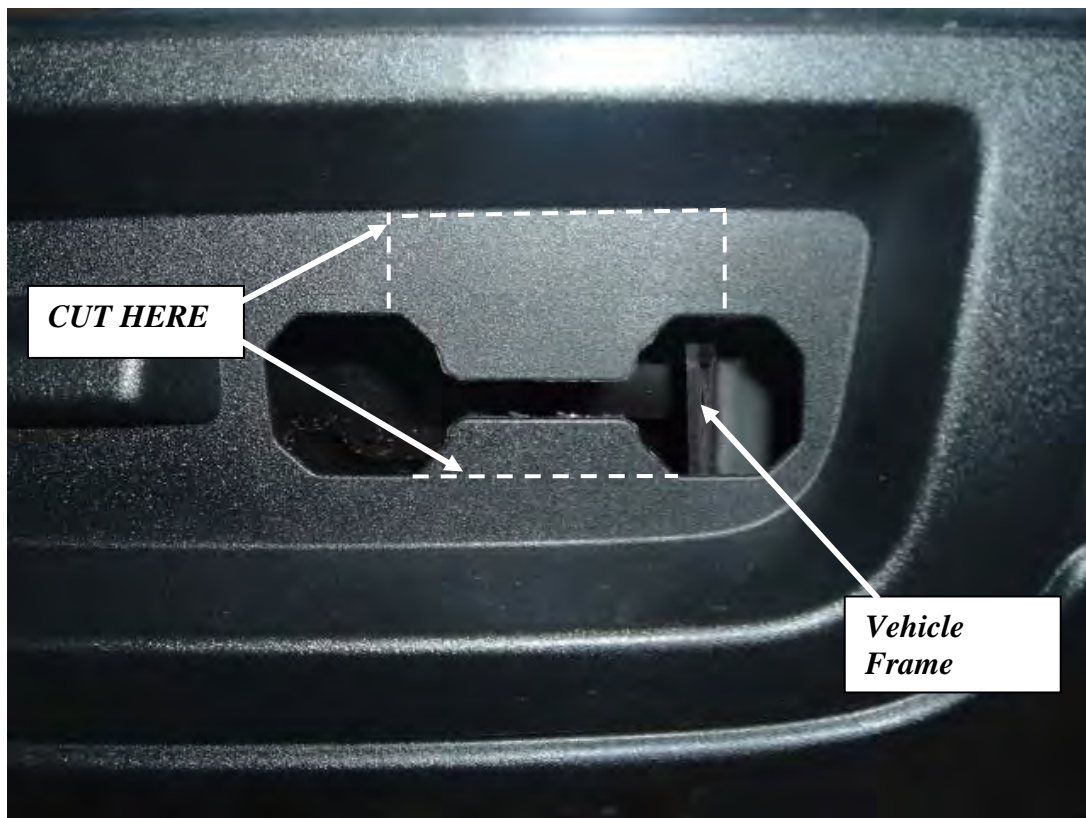


**Figure 3** Outboard bumper bolt – Left side Sierra shown; Silverado similar

Use a knife or saw to trim the tow loop openings in the bumper. See **Figure 4** for Silverado and **Figure 5** for Sierra

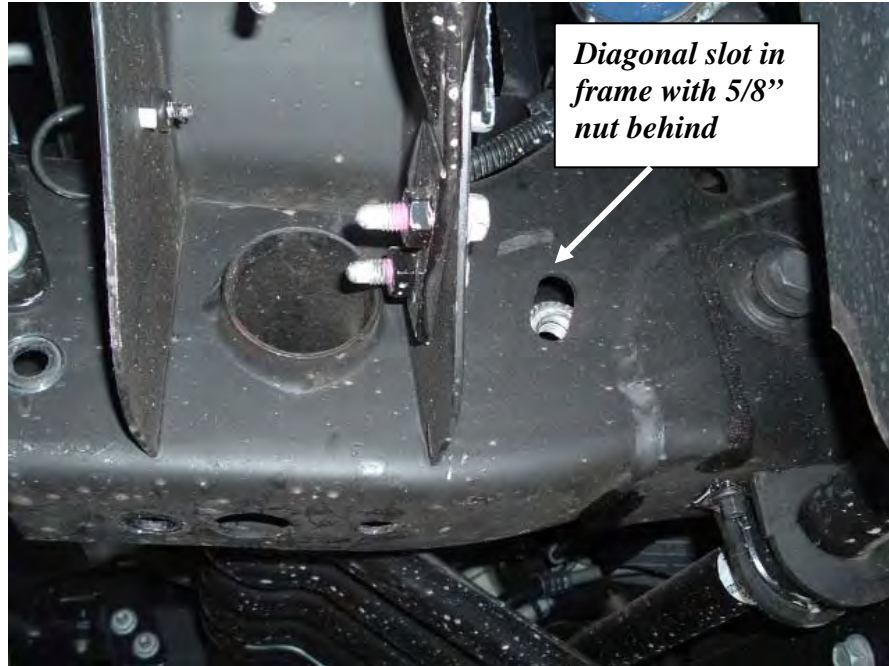


**Figure 4** Trim opening for Frame Extension – LH Silverado



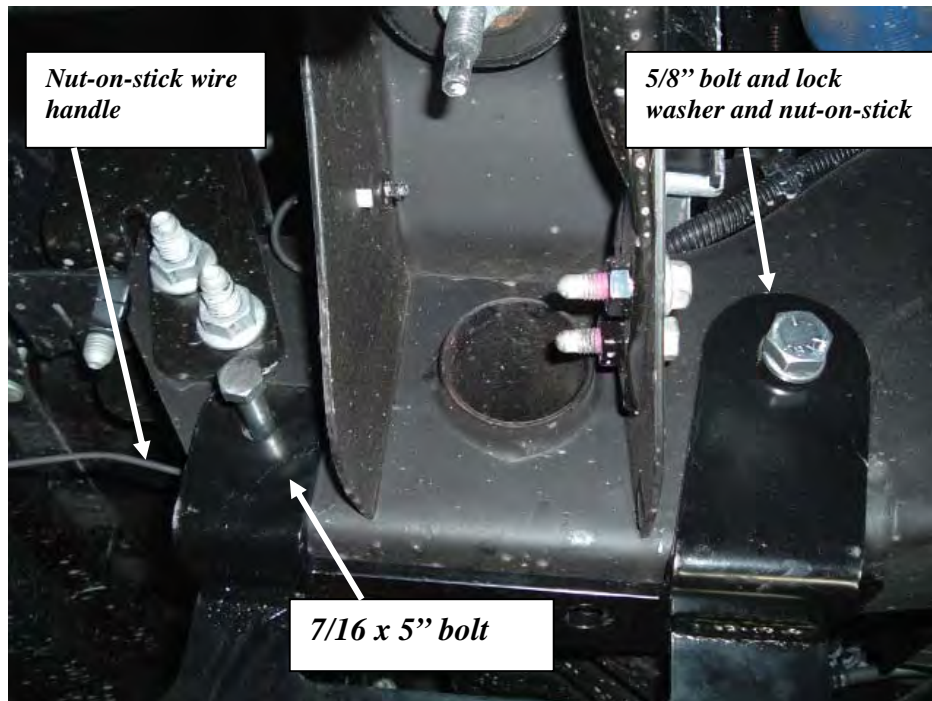
**Figure 5** Trim opening for Frame Extension – LH Sierra

Hold one of the Frame Brackets in place and temporarily insert a 7/16 x 5" bolt through the bracket and the frame. Insert a 5/8" "nut with stick" into the end of the frame and align with the diagonal slot in the outside of the frame.



**Figure 6 Diagonal slot in frame with 5/8" nut-on-stick shown LH frame shown**

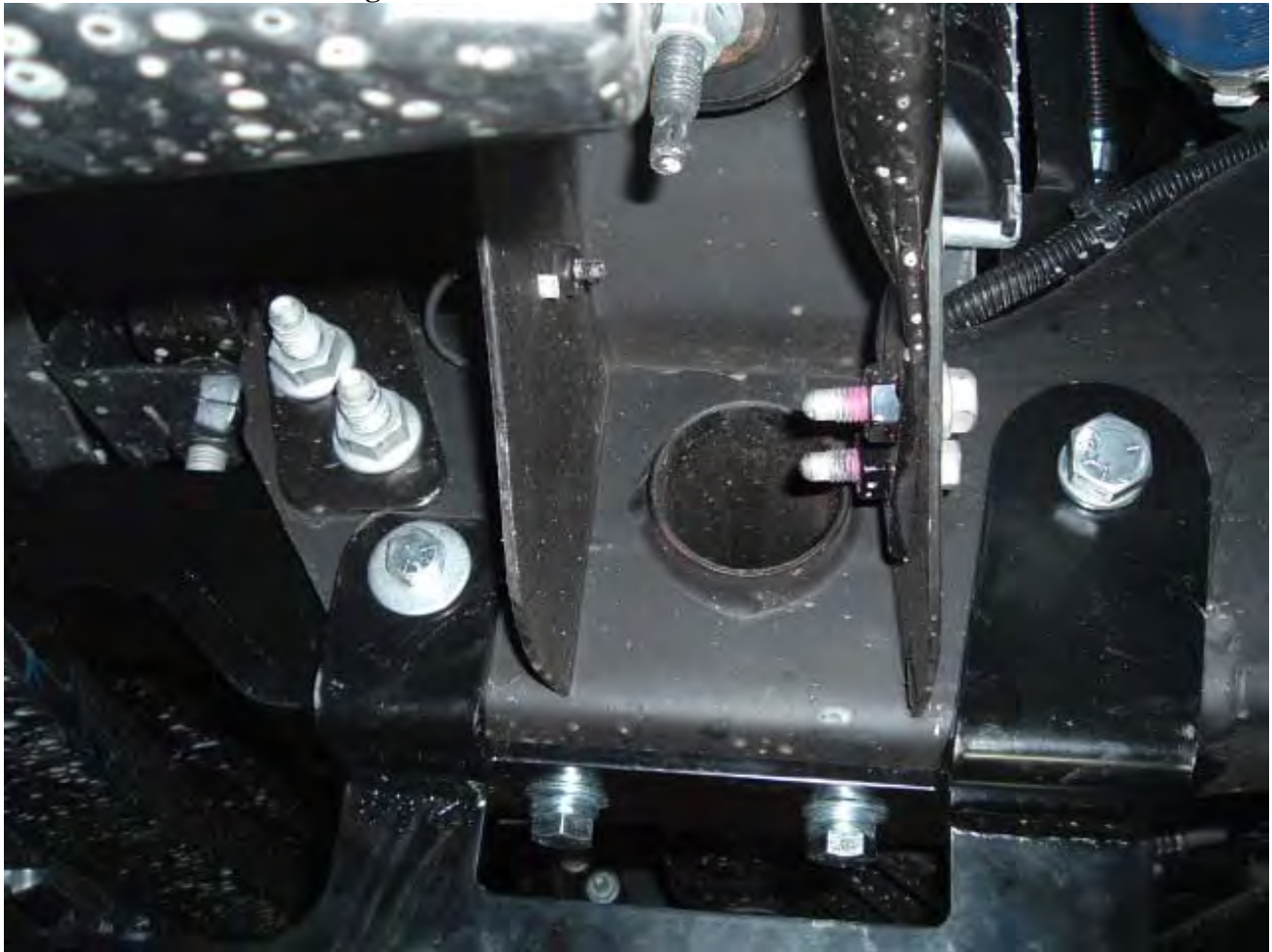
**Note:** it will be necessary to bend the wire attached to the nut to reach the slot. See Figure 6 and 7. Install a 5/8" bolt, lock washer and flat washer through the Frame Bracket and frame into the 5/8" nut. Trim excess wire or bend it out of the way. Do not tighten the bolts yet.



**Figure 7 LH Bottom Bracket in place**

Remove the 7/16 x 5" bolts. Insert the LH and RH Frame Extensions into the frame. Reinstall the 7/16 x 5" bolt with flat washers (2ea), lock washers and nuts. Also install two (2) 1/2 x 1 3/4" bolts with lock

washers and flat washers through the bottom of each Bottom Bracket and frame, into the nuts welded to the frame extensions. **See Figure 7 and 8**

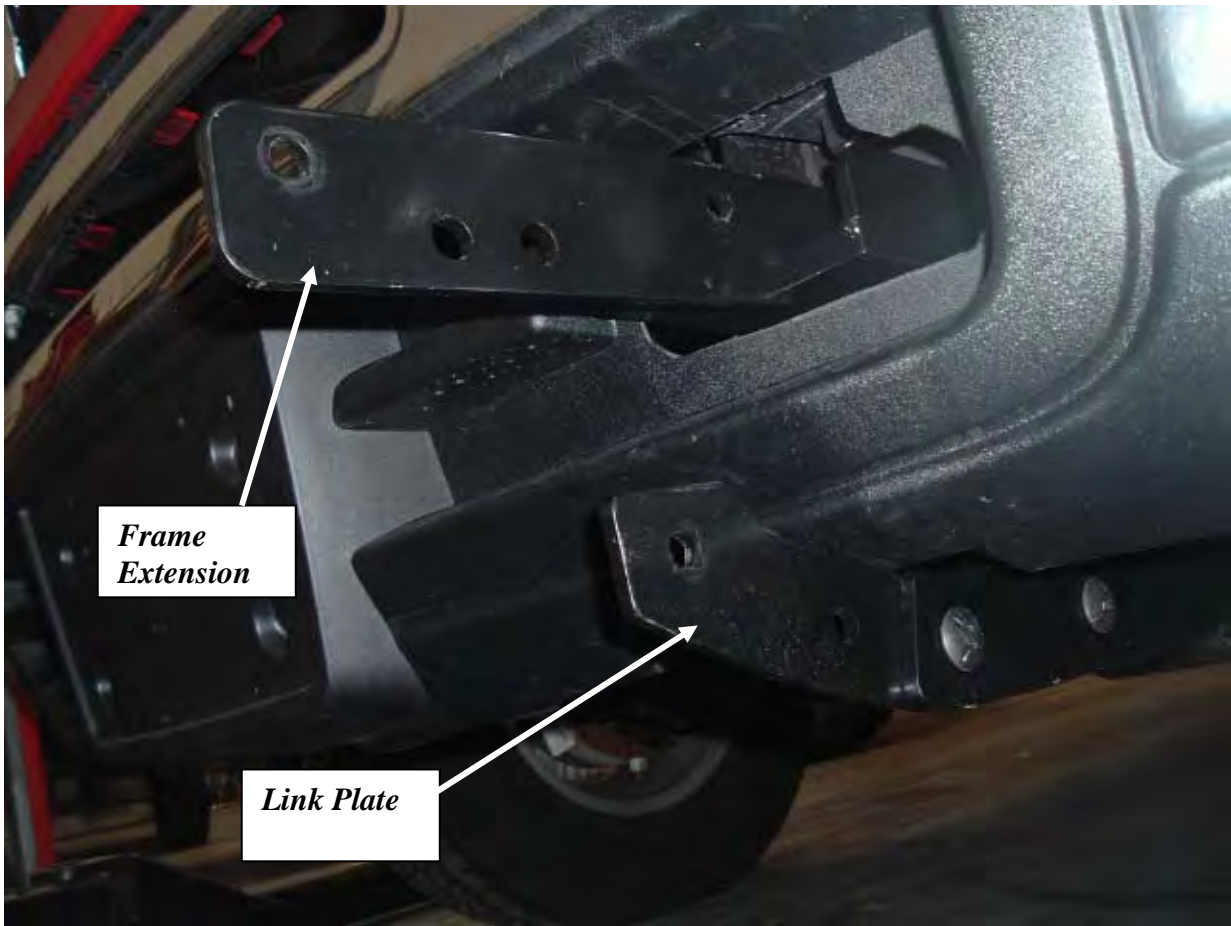


**Figure 8 LH Bottom Bracket with hardware**

### **Silverado Only**

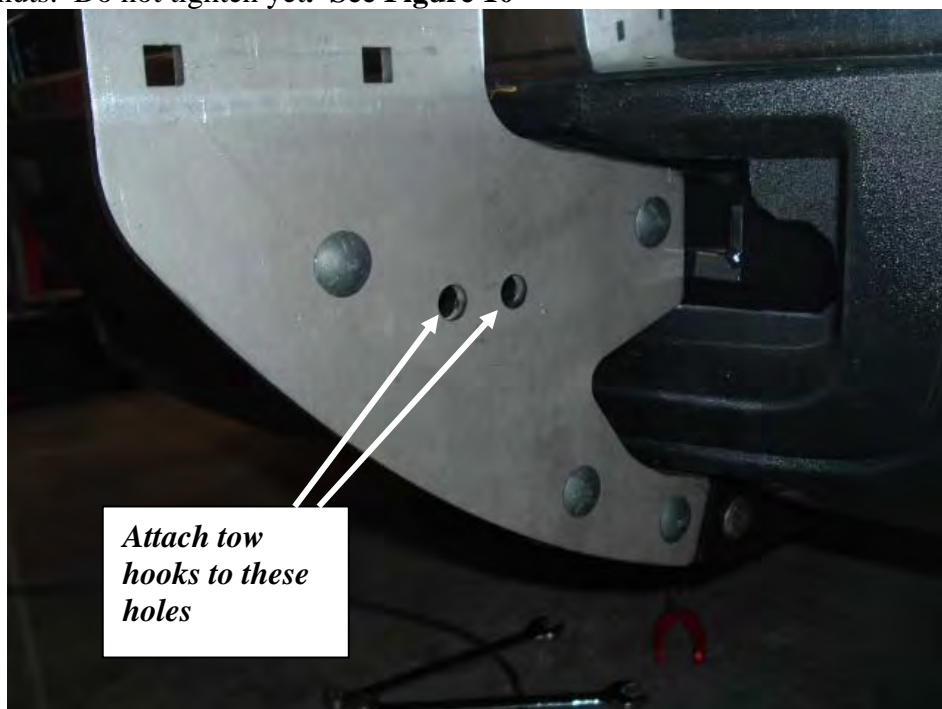
Reinstall the Silverado bumper. Place the bumper on the vehicle and support it while you reinstall the original through bolts and nuts. Adjust the bumper for height and level. Tighten the bolts. Install the outboard bumper bolts and tighten. Reconnect the fog lamps if equipped.

Install the Link Plates to the inside of the bottom brackets. Use two 7/16 x 1-1/4" carriage bolts, flat washers, lock washers and nuts per plate. **See Figure 9.**



**Figure 9 LH Frame Extension, Bottom Bracket and Link Plate in place – Sierra shown, Silverado similar**

Install the Side Members to the outside of the Frame Extension Plates and the Link Plates. Use two 7/16 x 1-1/4" carriage bolts, flat washers, lock washers and nuts per Link Plate and two for the Frame Extension, if you are installing a black kit. If you are installing a stainless kit use stainless button head bolts and lock nuts. Do not tighten yet. **See Figure 10**



**Figure 10 LH Side Member installed**



Install the Warn tow hooks to the outside of the Side Members. Use two (2) 1/2 x 2-1/2 bolts with flat washers, lock washers and nuts per hook. Do not tighten yet.

If you are installing a winch install the winch carrier plate now. Use the 7/16 hardware that comes with carrier kit if you are installing a black Trans4mer. If you are installing a stainless Trans4mer, use the 7/16" stainless button heads with lock nuts provided with this kit.

Install the upper cross tube. Use 3/8" socket button head screws. For black tubes, use a plastic washer between each tube end and the side member. Stainless tubes do not use washers.

NOTE: It is easier to install the winch with the middle tube removed. Install the middle tube as above after the winch has been installed.

Begin tightening the hardware starting from the winch carrier working back toward the vehicle until all fasteners are tightened to the torque values specified on page 2. Tighten the socket button head screws for both tubes.

Verify all fasteners are tightened before operating the winch.

 **WARNING**

**READ THE VEHICLE'S OPERATOR MANUAL, WINCH OPERATOR MANUAL, AND ALL WARNING LABELS PRIOR TO OPERATION OF WINCH.**

 **WARNING**

**FAILURE TO SECURELY TIGHTEN ALL BOLTS ON THE WINCH PLATE, WINCH, AND FAIRLEAD CAN RESULT IN PRODUCT FAILURE WHICH MAY RESULT IN VEHICLE DAMAGE AND OPERATOR INJURY OR DEATH. DOUBLE CHECK THAT ALL BOLTS ARE SECURELY TIGHTENED PRIOR TO USE.**

 **WARNING**

**PERFORM REGULAR INSPECTIONS ON THE WINCH, WINCH MOUNT, AND RELATED HARDWARE. NEVER OPERATE THE WINCH OR WINCH MOUNT WITH DAMAGED OR MISSING PARTS. FAILURE TO FOLLOW THIS WARNING MAY CAUSE VEHICLE DAMAGE AND OPERATOR INJURY OR DEATH.**

## Warn Industries

### Stainless Steel Truck Accessories

#### **What to expect:**

Polished stainless steel combines the beauty of a chrome-like appearance with extreme durability and corrosion resistance. With a minimum amount of care, the appearance will last almost indefinitely. Unlike plating or coatings, there is nothing to peel off or wear away that would allow corrosion underneath.

The actual appearance may not be exactly like new chrome in either the degree of luster or color. There may be fine polishing lines visible up close and small differences between mating parts of an assembly. A grille guard, for instance, may have small differences between the round tubing and the flat plate. The backside of a part may not be as highly polished as the front. However, part of the beauty and appeal of stainless actually lies in the smooth “hand-worked” appearance.

There also is a possibility that small rust spots can appear on stainless products. They are usually due to minor iron contamination on the surface as a result of normal manufacturing and handling processes. This minor rust, if it occurs at all, is easy to remove and will not tend to spread.

#### **Recommended care:**

Regular washing with fresh water and mild car wash detergents followed by rinsing and drying with a soft towel is the best minimum care. Beyond that, any cleaner/wax recommended for automotive finishes will work well to remove minor stains and scuffs, enhance the shine and provide protection. Always use clean soft cotton cloths. In most cases, this will be all that is required for many years. For more serious blemishes or a rust spot, use a cream metal polish recommended for stainless, aluminum, etc. Try to rub in the direction of the original polishing lines.

Ultimately, any stainless part can be restored to a brilliant shine with power buffing processes.

#### **Caution:**

Do not use steel wool or any type of metal scraper. Do not use “Scotch Brite” pads or abrasive powdered cleaners. Do not try to clean with muriatic acid or any other acid.

#### **Stainless Fasteners**

Stainless steel fasteners are included in many of the stainless kits. These fasteners provide similar corrosion resistance and appearance as the rest of the kit. However, stainless fasteners are prone to galling when installed in similar stainless material. It is a good idea to apply a small amount of anti-seize compound to the threads when installing them. Care should also be taken when tightening the fasteners to prevent rounding or deforming the corners of the bolts. Make sure the wrenches are the correct size and fit properly. In the case of socket heads, the wrench should have sharp, un-worn edges. With a few precautions during assembly the products should provide years of service.