

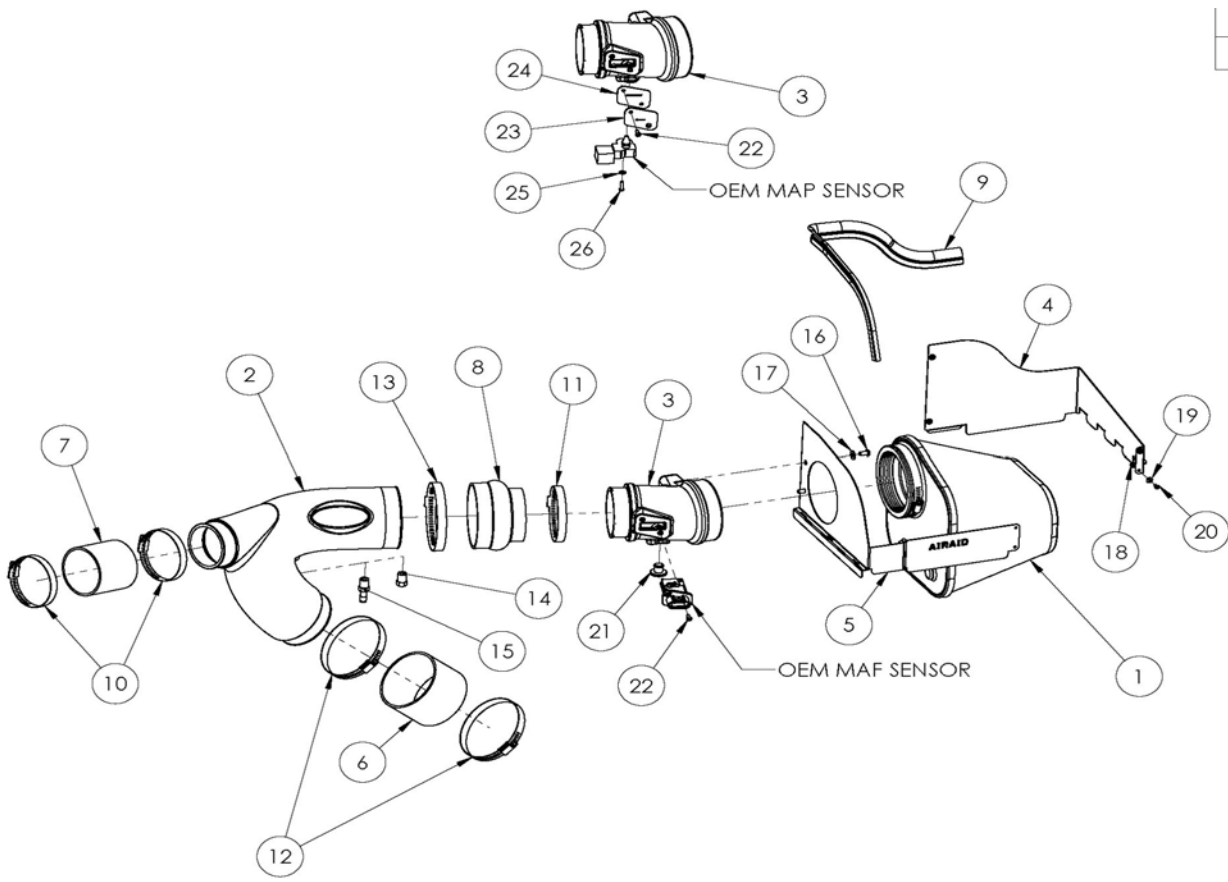


Installation Instructions

For Part Numbers:

404/405-101 724/725-478 Airaid Oiled Media Filter

2011-2014 Ford F-150 3.5L
EcoBoost V6



Component Identification

| | | |
|----|-----------------------------|---|
| 1 | AIR FILTER | 1 |
| 2 | INTAKE TUBE | 1 |
| 3 | INTAKE TUBE; SENSOR | 1 |
| 4 | HEAT SHIELD; REAR | 1 |
| 5 | HEAT SHIELD; FRONT | 1 |
| 6 | COUPLER; 4"ID X 3"L | 1 |
| 7 | COUPLER; 3.15"ID X 3"L | 1 |
| 8 | HUMP HOSE; 4.25"ID X 3.4"ID | 1 |
| 9 | WINDSHIELD; WIPER BLADE | 1 |
| 10 | HOSE CLAMP; #48 | 2 |
| 11 | HOSE CLAMP; #56 | 1 |
| 12 | CLAMP; #64 | 2 |
| 13 | CLAMP; #72 | 1 |
| 14 | PLUG; 1/4 NPT | 1 |
| 15 | VENT; 3/8" HOSE | 1 |
| 16 | SCREW; 1/4-20 X 1/2" BTNHD | 2 |
| 17 | WASHER; 1/4"ID X 5/8"OD | 2 |
| 18 | NUT; 6-32, HEX | 4 |
| 19 | WASHER; #6 SAE, FLAT | 4 |
| 20 | SCREW; 6-32 X 5/16" PANHEAD | 4 |
| 21 | PLUG | 1 |
| 22 | SCREW; 8-32 X 1/2" BTNHD | 2 |
| 23 | PLATE; MAF | 1 |
| 24 | GASKET | 1 |
| 25 | WASHER; #8, FLAT | 1 |
| 26 | SCREW; 8-32 X 5/8" BTNHD | 1 |
| 27 | BIT; TORX T20 | 1 |

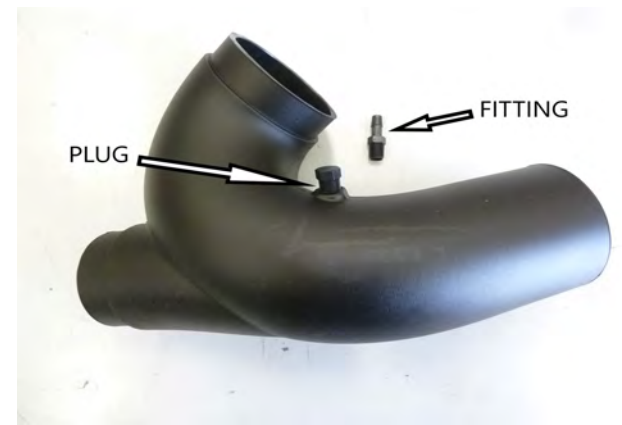
Full color instructions can be viewed on our web site at Airaid.com. If you need any assistance please call 1-800-858-3333 to speak with a representative in our Customer Service Center before returning the product.



1. Disconnect The Negative Battery Terminal.
Loosen the 3 clamps on the factory intake tube and remove it from the vehicle.
NOTE: 2011 models will have a vacuum line attached to the underside of the intake tube that will need to be disconnected.



2. Disconnect the wiring harness from air sensor in the air box lid. Unclip the air box lid and remove it and the factory air filter from the vehicle. The lower half of the factory air box is to remain in the vehicle.



3. On 2011 models with the vacuum line in the intake, install the 1/4" Barbed Fitting. The Plug will not be used. On 2012-2014, Install the 1/4" Plug into the Airaid Intake Tube as shown.



4. Slide the Couplers and Clamps onto the Intake tube as shown. Complete the Tube assembly by applying the Airaid Bubble decal.



5. Install the Airaid Intake Tube onto the factory turbo plumbing and tighten the Clamps. On 2011 models, reconnect the vacuum from step 1 to the Fitting installed in step 3.



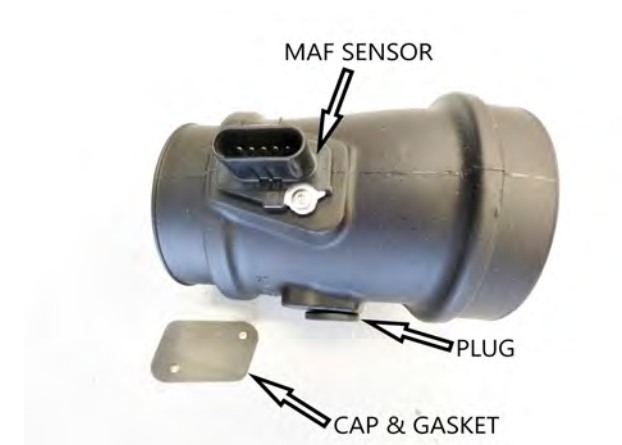
6. Assemble the Front and Rear Panels as shown with the tabs on the outside of the assembly. Use the four 6-32 Phillips Head Screws, #6 Flat Washers, and #6 Kep Nuts to secure the assembly. Complete the Panel assembly by applying the Airaid Foil decal.



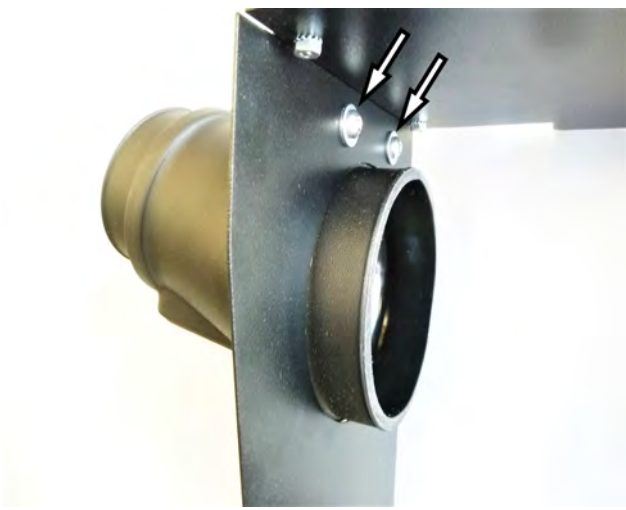
7. If your vehicles intake utilizes a MAP sensor: Install the Meter Cap and Gasket onto the Airaid Sensor-Tube as shown, using the two 8-32 1/2" Button Head Screws.



8. Transfer the MAP Sensor into the Airaid Sensor Tube as shown. Secure the sensor using the Long 8-32 Button Head Screw and the Washer. Discard the Plug. It will not be used.



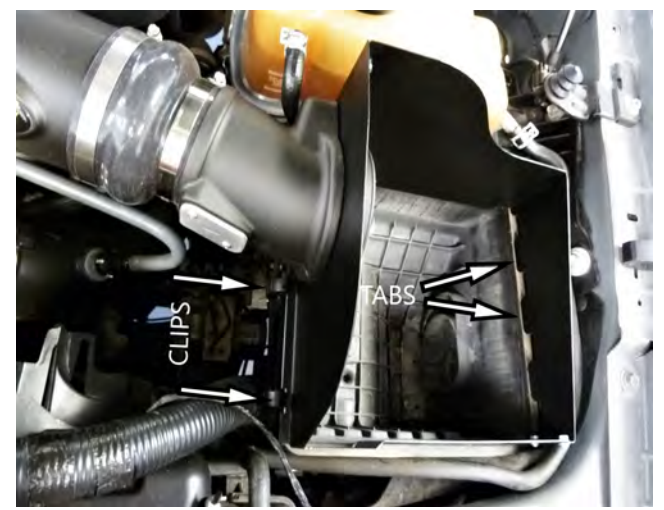
9. If your vehicles intake utilizes a Mass Airflow, or MAF sensor: Transfer the sensor into the Airaid Sensor Tube as shown and secure using the two 1/2" Button Head Screws. Complete the Tube assembly by inserting the MAP Plug. Discard the Meter Cap and Gasket. They will not be used.



10. Mount the Sensor Tube onto the Panel Assembly and secure using the two 1/4-20 Button Head Screws and 1/4" Flat Washers.



11. Slide the Hump Hose and Clamps onto the Sensor Tube as shown.



12. Install the Tube and Panel assembly onto the Airaid Intake Tube first, then insert the Panel tabs into the factory air box slots. Adjust the assembly until the OEM air box clips can positively engage the Panels and lock.



13. Tighten the Clamps on the Hump Hose, reconnect the MAF or MAP sensor and install the Weather Strip as shown, with the contour rolling away from the Filter area.



14. Install the Airaid Premium Filter onto the Sensor Tube and tighten the clamp.



15. Double check your work. Make sure there is no foreign material in the intake path. Make sure all clamps, hoses, bolts, and screws are tight. Double check the hood clearance. **Reconnect the negative battery cable.**

Thank you for purchasing the Airaid Intake System. Contact Airaid @ (800) 498-6951 8:00 AM - 5:00 PM MST weekdays for questions regarding fit or instructions that are not clear to you. Your Airaid Intake System was carefully inspected and packaged. Check that no parts are missing, or were damaged during shipping. If any parts are missing, contact Airaid. The air filter element is protected from direct exposure to water and debris; care should be taken not to drive through deep water. WATER INGESTION IS THE DRIVERS RESPONSIBILITY! The air filter is reusable and should be cleaned periodically.

Full color instructions can be viewed on our web site at Airaid.com. Use the **Product Search** function to find your part number, and click **View Details**.

For your Oiled media filter we suggest using the AIRAID Filter Tune-Up Kit!



SynthaMax®

Do Not Oil



NOT LEGAL FOR SALE OR USE ON ANY POLLUTION CONTROLLED MOTOR VEHICLE IN CALIFORNIA OR STATES ADOPTING CALIFORNIA EMISSION PROCEDURES.

See AIRAID.COM for CARB status on each part for a specific vehicle.

Synthamax Air Filters do not require oil. Service air filter as needed by cleaning with common non-petroleum all-purpose household cleaner and water. Simple Green®, Formula 409® or equivalent works great. Apply cleaner to outside of air filter and allow to soak. Then flush filter clean from the inside out with a garden hose and repeat steps if necessary. Do not apply high pressure water or air to clean filter. Allow filter to air dry and reinstall.

P/N 790-551 Aerosol Spray
P/N 790-550 Squeeze Spray