

# Airaid

## Installation Instructions

For Part Numbers:

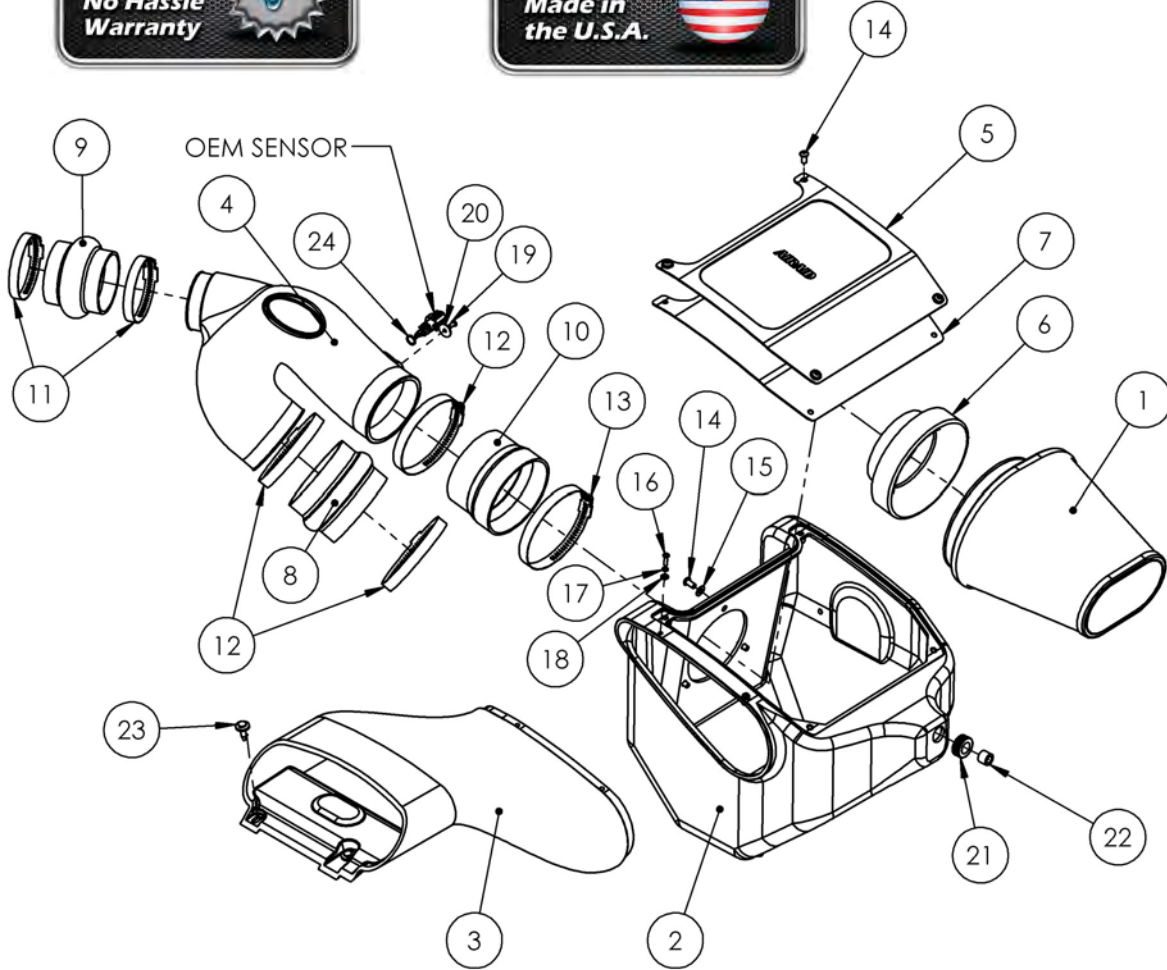
404-338 724-243 Airaid Oiled Media Filter

405-338 725-243 SynthaMax Dry Media Filter

2015-16 Ford F-150

3.5 L EcoBoost V6

2015-20 Ford F-150 2.7L V6



### Component Identification

1	AIR-720/721-243	Airaid Premium Filter	1
2	AIR-KIT338CAB	Cold Air Box	1
3	AIR-KIT338INLET	Air Inlet	1
4	AIR-KIT338	Intake Tube	1
5	AIR-KIT338LID-1	Airaid Air box Lid	1
6	AIR-KIT1121MAFADA	Adapter; MAF Plastic	1
7	AIR-KIT338G	Lid Gasket	1
8	AIR-KITHUMPHS22	Hump Hose; 4"ID x 3"L	1
9	AIR-KITHUMPHS06EPDM	Hump Hose; 3"ID x 3"L	1
10	AIR-KITRDCR30	Reducer; 4.325"ID x 4"	1
11	08601	#48 Hose Clamp	2
12	AIR-KITHS64	#64 Hose Clamp	3
13	AIR-KITHS72	#72 Hose Clamp	1
14	AIR-KIT15DHC3050	1/4-20 Button Head Cap Screw	7
15	08275	1/4" Flat Washer	3
16	AIR-KIT15BHC3063	8-32 Button Head Screw	2
17	AIR-KIT15LW3016	#8 Split Lock Washer	2
18	AIR-KIT15FW3016	#8 Flat Washer	2
19	AIR-KIT15BHC3038	8-32 Button Head Screw (short)	1
20	AIR-KITWASH02	#8 Fender Washer	1
21	AIR-KITGRMT20	Grommet; 5/8"	1
22	AIR-KITSPACER09	Spacer; 382"ID x 5/8"OD	1
23	AIR-KITRETCLIP02	Clip; Retainer Body	2
24	AIR-KITRING013	O-Ring	1

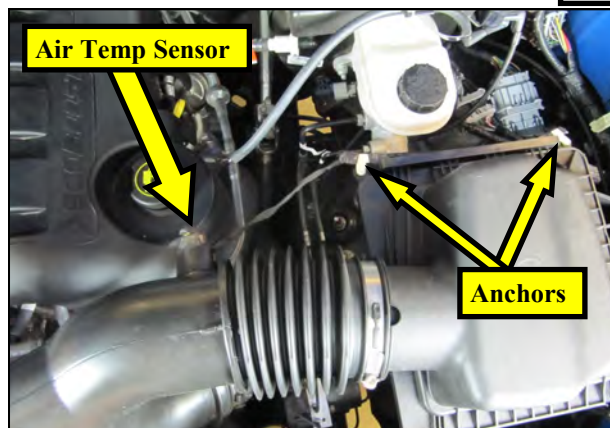
Full color instructions can be viewed on our web site at [Airaid.com](http://Airaid.com). If you need any assistance please call 1-800-858-3333 to speak with a representative in our Customer Service Center before returning the product.

**NOT LEGAL FOR SALE OR USE ON ANY POLLUTION CONTROLLED MOTOR VEHICLE IN CALIFORNIA OR STATES ADOPTING CALIFORNIA EMISSION PROCEDURES.**

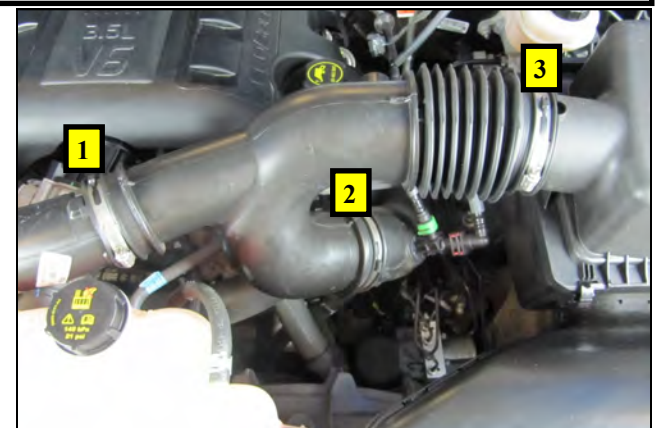
See AIRAID.COM for CARB status on each part for a specific vehicle.



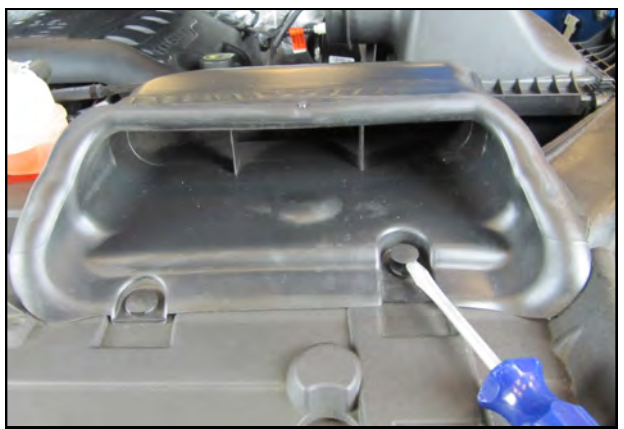
1. Disconnect the negative battery terminal.



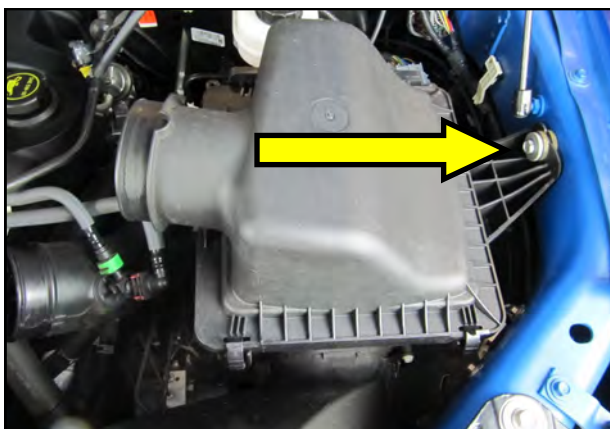
2. Disconnect the Air Temp Sensor in the intake tube and gently pry the harness anchors out of the air box.



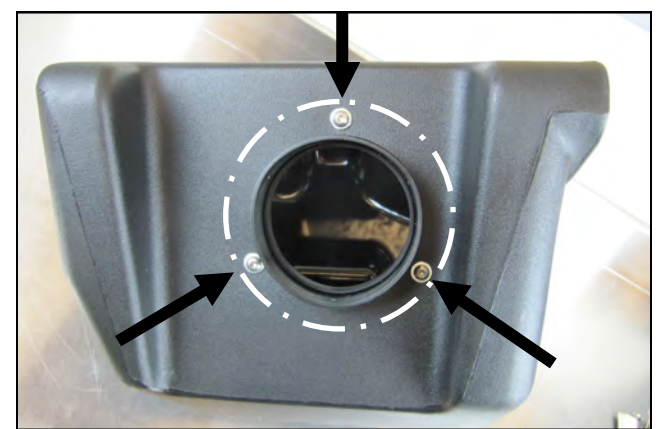
3. Loosen the three clamps on the intake tube and remove it from the vehicle.



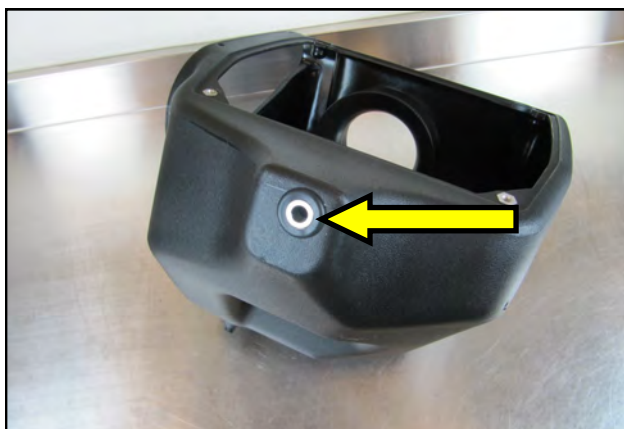
4. Using a standard blade screwdriver, gently pry up the center posts of the plastic rivets in the air inlet and remove them.



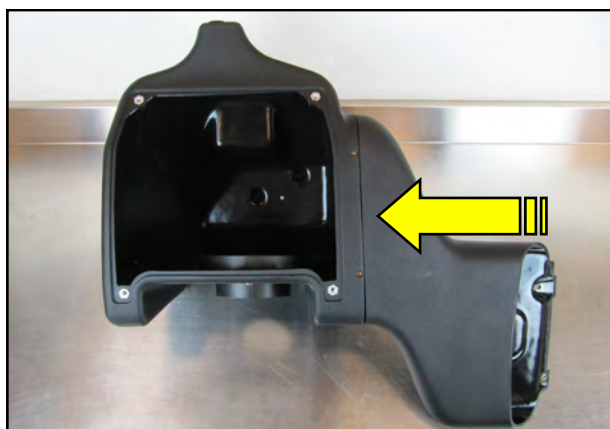
5. Remove the 8mm fender bolt in the air box and remove the entire air box/scoop assembly from the vehicle.



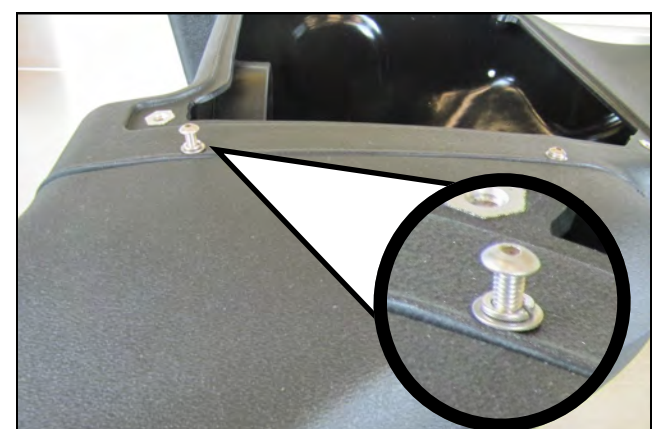
6. Mount the Filter adapter inside of the Airaid Air Box as shown using three sets of the 1/4-20 Button head Screws and Flat washers.



7. Insert the Grommet and Spacer into the opposite side of the Airaid Air Box.



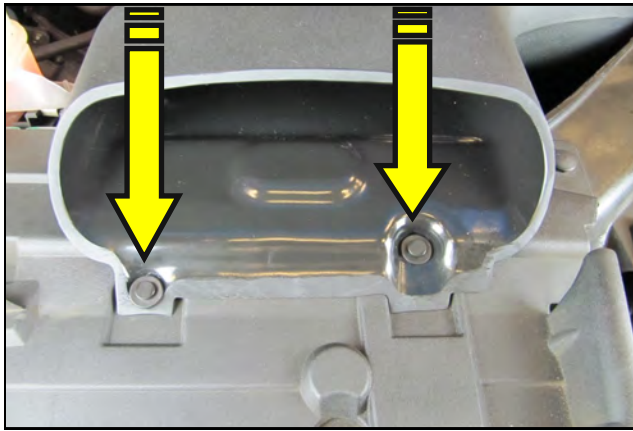
8. Snap the new Air Scoop into the Airaid Air Box as shown.



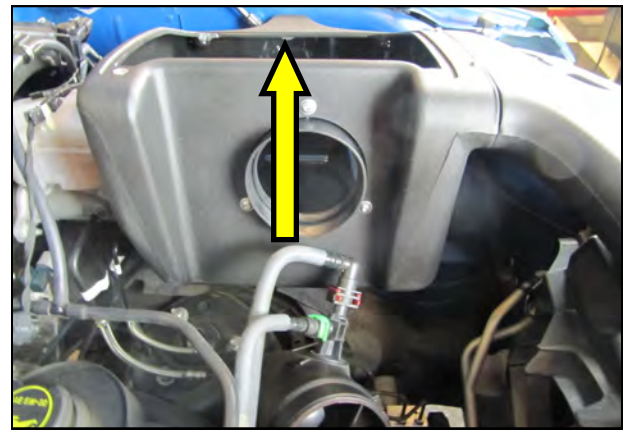
9. Secure the Scoop to the Air Box using the two sets of 8-32 Button Head Screws, Lock Washers and Flat washers.



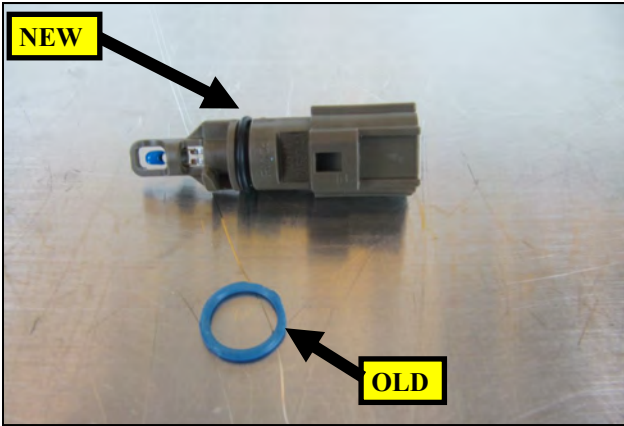
10. Place the Airaid air Box/Inlet assembly into the inner fender area of the vehicle as shown.



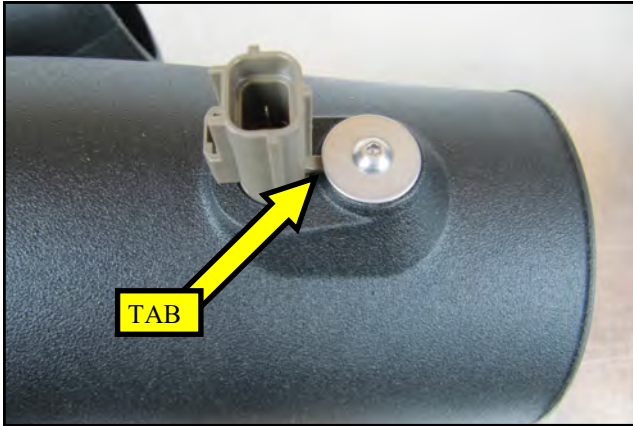
11. Align the mounting holes in the Inlet with the core support holes and secure it using the new, Airaid supplied, Plastic Rivets.



12. Secure the Airaid Air Box to the inner fender using the 8mm bolt removed in step 5.



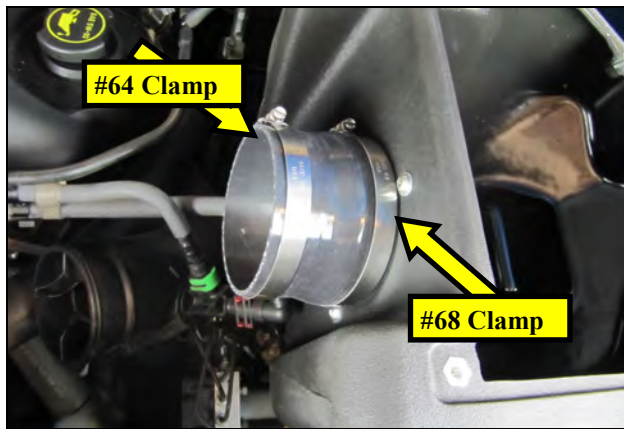
13. Carefully remove the Air Temperature Sensor from the intake tube and replace the OEM grommet with the new, Airaid supplied Grommet.



14. Gently insert the Air Temp Sensor into the Airaid Intake Tube as shown, with the locating tab inside of the slot in the sensor boss. Secure the sensor using The remaining 8-32 Screw and #8 Fender Washer



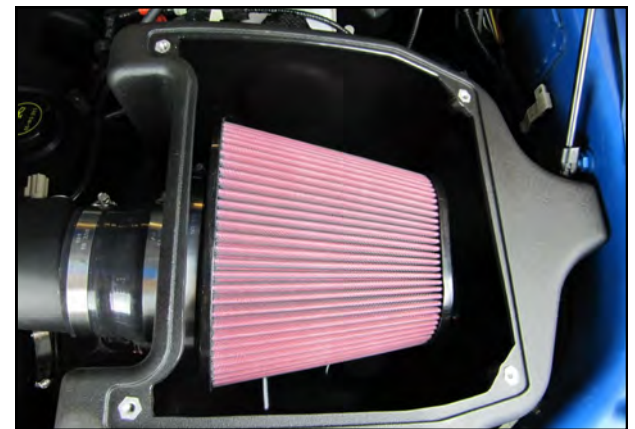
15. Slide the Hump Hoses and Clamps onto the Airaid Intake tube as shown. The Small Hump Hose will use the #48 Clamps and the Large Hump Hose is to use the #64 Clamps. Apply the Airaid Decal onto the Tube as shown.



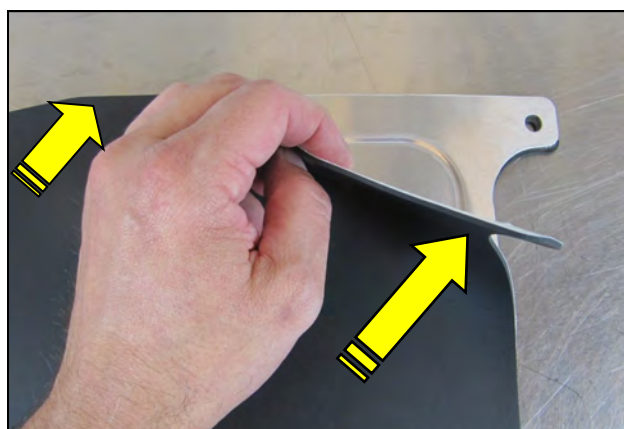
16. Slide the remaining Coupler and Clamps onto the Filter adapter, as shown.



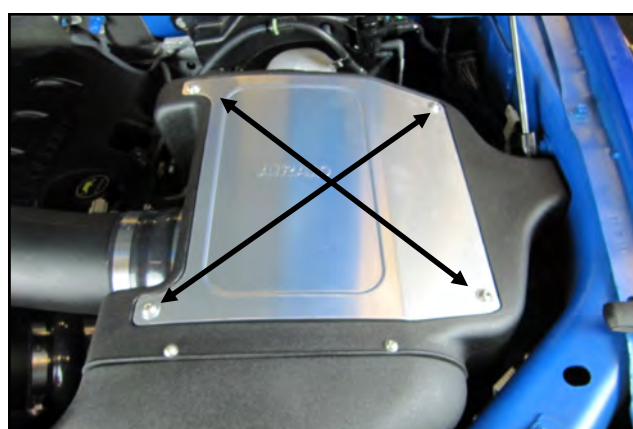
17. Connect the Airaid Intake Tube onto the factory turbo plumbing, then into the Air box Coupler. Rotate the Tube forwards and backwards until proper alignment is achieved and tighten all six Clamps.



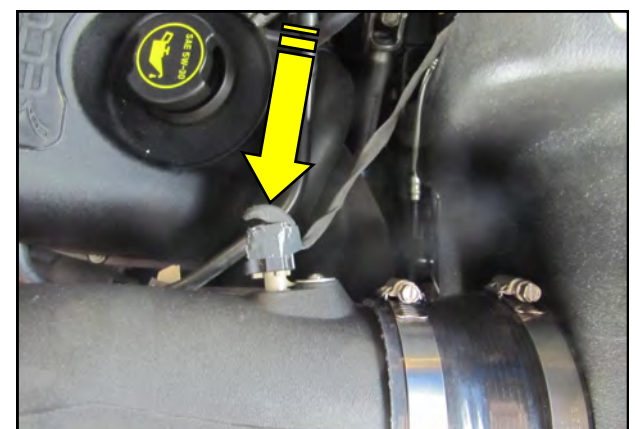
18. Install the Airaid Premium Filter onto the Filter Adapter and tighten the Clamp.



19. Remove the protective film from the top of the Air Box Lid. Prepare the underside for the Lid Gasket by cleaning it using a prep-sol or equivalent. Carefully apply the self adhesive Gasket onto the Lid as shown.



20. Mount the Lid onto the Air Box using the remaining Button Head Screws.



21. Reconnect the Air Temp Sensor and secure the wire harness into the anchor holes in the back of the Airaid Air Box. Double check your work! Make sure all clamps, hoses, bolts, and screws are tight. Reconnect the negative battery cable!

Thank you for purchasing the Airaid Intake System. Contact Airaid @ (800) 498-6951 8:00 AM - 5:00 PM MST weekdays for questions regarding fit or instructions that are not clear to you. Your Airaid Intake System was carefully inspected and packaged. Check that no parts are missing, or were damaged during shipping. If any parts are missing, contact Airaid. The air filter element is protected from direct exposure to water and debris; care should be taken not to drive through deep water. WATER INGESTION IS THE DRIVERS RESPONSIBILITY! The air filter is reusable and should be cleaned periodically.

For your Oiled media filter we suggest using the AIRAID Filter Tune-Up Kit. P/N 790-551 Aerosol Spray P/N 790-550 Squeeze Spray

**NOT LEGAL FOR SALE OR USE ON ANY POLLUTION CONTROLLED MOTOR VEHICLE IN CALIFORNIA OR STATES ADOPTING CALIFORNIA EMISSION PROCEDURES.**

See AIRAID.COM for CARB status on each part for a specific vehicle.

Synthamax Air Filters do not require oil. Service air filter as needed by cleaning with common non-petroleum all-purpose household cleaner and water. Simple Green®, Formula 409® or equivalent works great. Apply cleaner to outside of air filter and allow to soak. Then flush filter clean from the inside out with a garden hose and repeat steps if necessary. Do not apply high pressure water or air to clean filter. Allow filter to air dry and reinstall.