

INSTALLATION MANUAL

2055125

This is the first of two manuals required to complete this installation. The second manual is included with your side bars / running boards.

Level of Difficulty

Easy

Parts List

1	Driver / left running board
1	Passenger / right running board
6	Mounting bracket, universal
6	Nylock nut, M8 - 1.25mm
12	Hex bolt, M8 - 1.25 x 25mm
3	U-bolt, M8
18	Flat washer, M8
12	Lock washer, M8
12	Clip nut, M8
12	Hex bolt, M8 (B)
12	Flat washer, M8 (B)
12	Lock washer, M8 (B)
3	Plastic bolt retainer, M10
3	Bolt plate, M10
3	Flat washer, M10
3	Nylock nut, M10 (B)

(B) = Black hardware

*Running boards sold separately

Tools Required

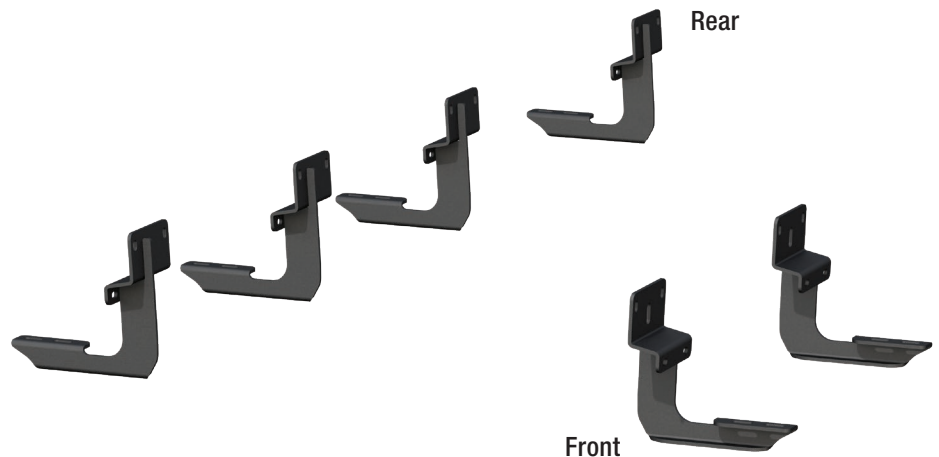
Ratchet	Socket, 13mm
Torque wrench	Socket, 17mm
Drill	Level
Drill bit, 1/16"	Flathead screwdriver
Drill bit, 3/8"	Marker

Torque Specifications

M8 bolt	7 ft-lbs.
M10 bolt	16 ft-lbs.

Use above torque setting unless otherwise noted

Product Photo



NOTICE

Before you begin installation, read all instructions thoroughly.

Proper tools will improve the quality of installation and reduce the time required.

To help prevent damage to the product or vehicle, refer to the specified torque specifications when securing hardware during the installation process.

Maintenance

To protect the product, wax after installing. Regular waxing is recommended to add a protective layer over the finish. Do not use any type of polish or wax that may contain abrasives that could damage the finish.

For polished, gloss and other smooth finishes, polish may be used to clear small scratches and scuffs on the finish.

Mild automotive detergent may be used to clean the product. Do not use dish detergent, abrasive cleaners, abrasive pads, wire brushes or other similar products that may damage the finish.

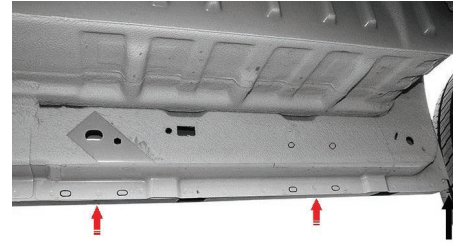
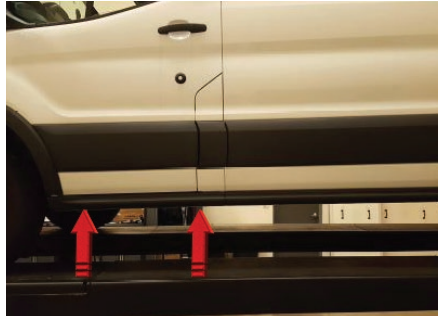
Product Registration and Warranty

CURT Group stands behind our products with industry-leading warranties.

Provide feedback and help us to improve our products by registering your purchase at: warranty.curtgroup.com/surveys

Step 1

Starting on the driver side, locate the two mounting locations along the bottom edge of the vehicle body.



Step 2

Position the first mounting bracket behind the rib in the pinch weld as indicated.

With a marker, place a dot in the center of the two outside mounting slots in both the top and bottom mounting locations.

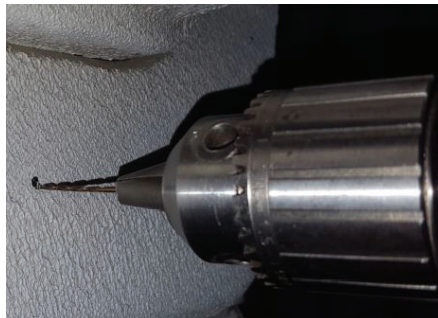


Step 3

Using a 1/16" drill bit to drill a pilot hole in each of the marked spots followed by the full sized 3/8" holes in each location.

WARNING

Do not drill through the welds in the pinch weld. Slide the bracket forward or rearward to move the slots away from the factory spot welds. Do not drill into or through the outer plastic rocker panel cover.



Step 4

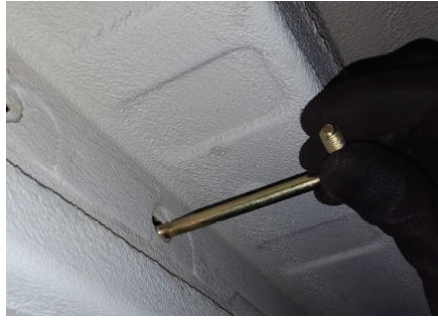
Pull back the plastic trim after undoing the push pins. Using a flathead screwdriver, pry the push pins apart, but not off.

Insert clip nuts over the drilled holes in the pinch weld between the plastic trim and rocker panel.



Step 5

Insert a U-bolt into the top two drilled holes as shown.



Step 6

Attach the top of the bracket using two M8 flat washers and nylock nuts.

Secure the bottom of the bracket by threading an M8 hex bolt, lock washer and flat washer through the bracket and into the clip nut installed in step 5.



Step 7

To install the driver-side rear bracket, insert an M10 bolt plate into the slot in the rocker panel. Secure the bolt plate with a plastic bolt retainer to prevent it from falling into the rocker panel.

While holding the bracket in place over the 10mm stud, mark the two lower slot locations on the rocker panel.

Secure the top of the bracket to the M10 stud with an M10 flat washer and nylock nut.

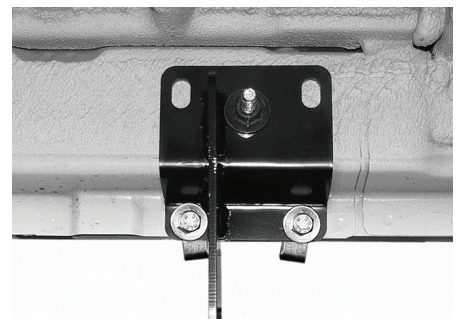
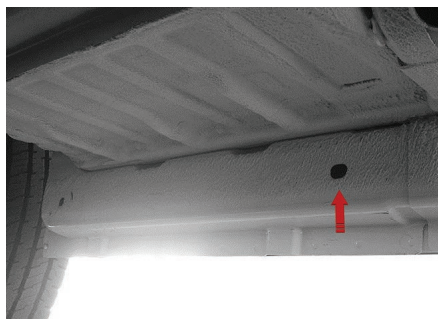
Repeat step 5 to install clip nuts over the lower drilled holes and secure with two M8 hex bolts, lock washers and flat washer.



Step 8

On the passenger side of the vehicle, identify the front bracket location by identifying the slot in the rocker panel.

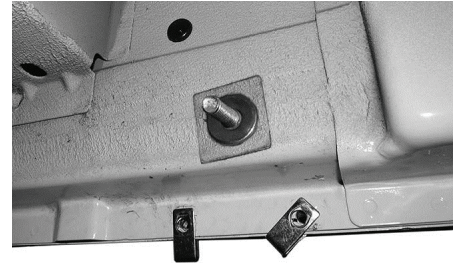
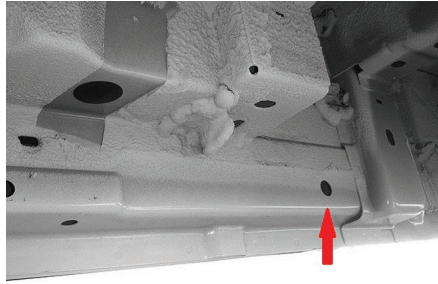
Repeat step 7 to install the passenger-side front bracket with an M10 bolt plate in the top location and M8 hex bolts and clip nuts in the lower location.



Step 9

Locate the rear passenger-side bracket mounting point by identifying the rear slot in the rocker panel.

Repeat step 7 to install the passenger-side front and rear brackets with an M10 bolt plate in the top location and M8 hex bolts and clip nuts in the lower location.



Step 10

For the middle two brackets, align the top slots in the brackets with the holes in the rocker panel. Mark the lower mounting locations and follow steps 3 through 6 to drill the lower mounting locations and install the brackets.

NOTICE

To complete the installation, refer to the manual included with your running boards / side steps.

