

Parts List

1	Driver / left side bar
1	Passenger / right side bar
2	Mounting bracket, front
2	Mounting bracket, middle
2	Mounting bracket, rear
12	Hex bolt, M8
12	Flat washer, M8
12	Lock washer, M8
18	Hex bolt, M10
18	Flat washer, M10
18	Lock washer, M10
6	Bolt, M12 & nut plate, M10
6	Flat washer, M12
6	Lock washer, M12
6	Hex nut, M12
6	Plastic retainer, M12
2	Spacer plate

Tools Required

Torque wrench	Socket, 13mm
Utility knife	Socket, 16mm
Level	Socket, 18mm

Torque Specifications

	METRIC	SAE
M6 bolt	3 ft.-lbs.	
M8 bolt	7 ft.-lbs.	
M10 bolt	16 ft.-lbs.	
M12 bolt	28 ft.-lbs.	
1/4" bolt		3 ft.-lbs.
5/16" bolt		7 ft.-lbs.
3/8" bolt		16 ft.-lbs.
7/16" bolt		20 ft.-lbs.
1/2" bolt		28 ft.-lbs.

Use above torque setting unless otherwise noted

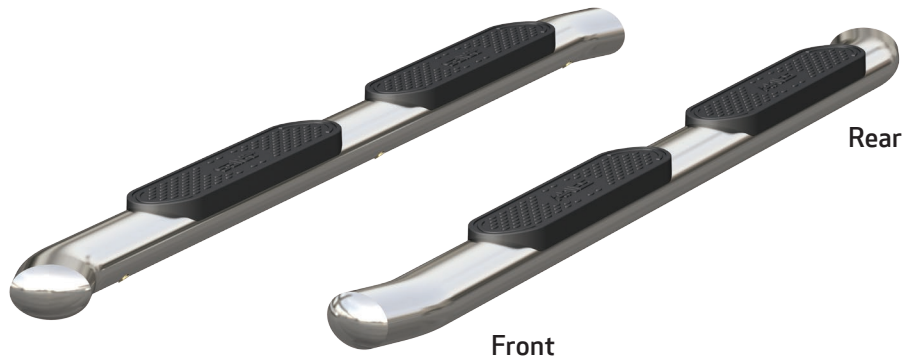
Level of Difficulty

Easy



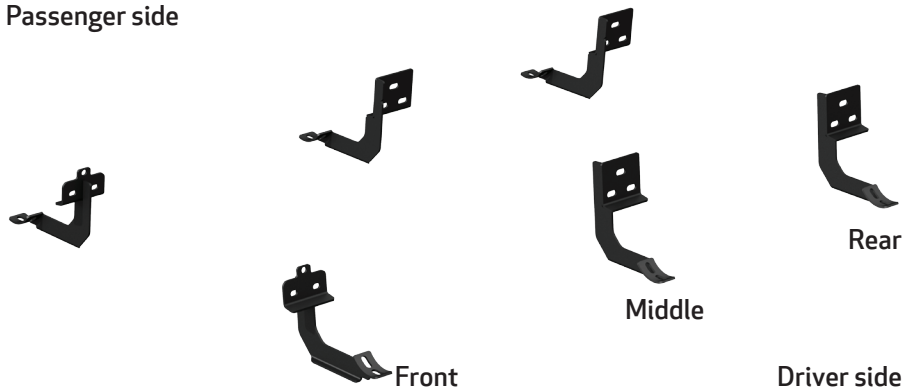
Scan for helpful install tips

Product Image



Brackets

Passenger side



Notes and Maintenance

Before you begin installation, read all instructions thoroughly.

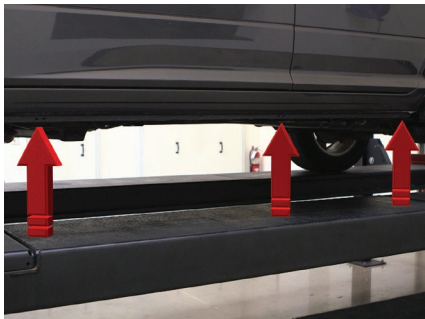
Proper tools will improve the quality of installation and reduce the time required.

For stainless steel and aluminum, polish may be used to clear small scratches and scuffs on the finish. Mild soap may be used also to clean the product.

Refer to the table to the left when securing hardware during the installation process to help prevent damage to the product or vehicle.

Step 1

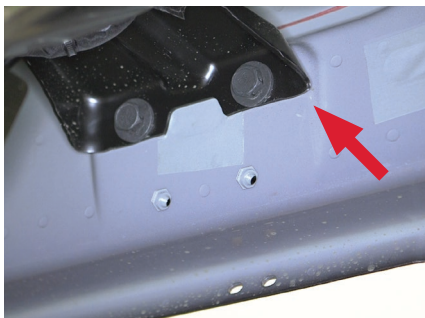
Starting on the driver side, locate the three mounting locations underneath the vehicle.



Step 2

Locate the driver-side front mounting point. Using a utility knife, cut and remove the tape plug covering the third mounting point for the front mounting bracket.

Note: If vehicle is 2009 - 2015, there may not be a support bracket (indicated by the red arrow) at this location. In this case, use the provided spacer plates between the front mounting brackets and the rocker panel.



Step 3

Insert a M12 bolt plate into the opening. Slide a plastic bolt retainer over the thread of the bolt to hold the bolt in place.

Place the front driver-side bracket onto the vehicle and secure the top portion with a M12 lock washer, flat washer and hex nut.

Snug the hardware, but do not fully tighten.



Step 4

Finish securing the front mounting bracket to the vehicle by inserting two M8 hex bolts, lock washers and flat washers into the bottom holes of the mounting brackets.

Note: On vehicles not equipped with M8 threaded inserts, align the M10 nut on the M12 bolt plate with either hole location on the bracket. Secure using a M10 hex bolt, lock washer and flat washer.



Step 5

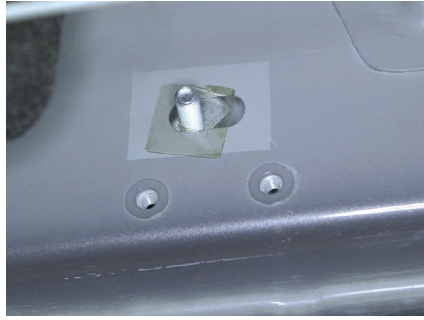
Locate the middle mounting point and the middle mounting brackets.

Insert a M12 bolt plate into the top mounting position. Slide a plastic bolt retainer over the thread of the bolt to hold the bolt in place.

Place the mounting onto the vehicle and secure with a M12 flat washer, lock washer and hex nut.

Secure the bottom of the bracket with two M8 hex bolts, lock washers and flat washers. Snug the hardware, but do not fully tighten.

Note: On vehicles not equipped with M8 threaded inserts, align the M10 nut on the M12 bolt plate with either hole location on the bracket. Secure using a M10 hex bolt, lock washer and flat washer.



Step 6

Locate the rear mounting point and repeat step 5 to secure the rear mounting bracket to the vehicle.



Step 7

Place the side bar onto the mounting brackets and align the mounting points. Ensure the rivet nuts on the bottom of the side bar line up with the brackets.

Secure the side bar to the brackets using a M10 hex bolt, lock washer and flat washer at each mounting location.

Snug the hardware, but do not fully tighten.



Step 8

Adjust and level the side bar.

With the side bar in position, it is recommended to tighten all brackets to the vehicle first, followed by the side bar connections.



Step 9

Repeat steps 1 through 8 on the passenger side of the vehicle.

Congratulations on the installation of your new ARIES 4" oval side bars.

With the side bars installed, periodic inspections should be performed to ensure all mounting hardware remains tight.

To protect your investment, see the 'Notes and Maintenance' section on the first page of this instruction manual.

