

INSTALLATION INSTRUCTIONS

CUSTOMER SERVICE

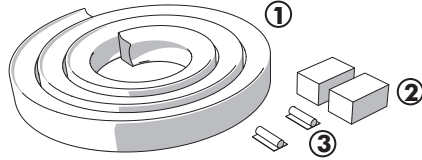
Phone: 818-365-9000 • MON - FRI 8:30 am - 6:00 pm EST

Email: SUPPORT@BAKINDUSTRIES.COM

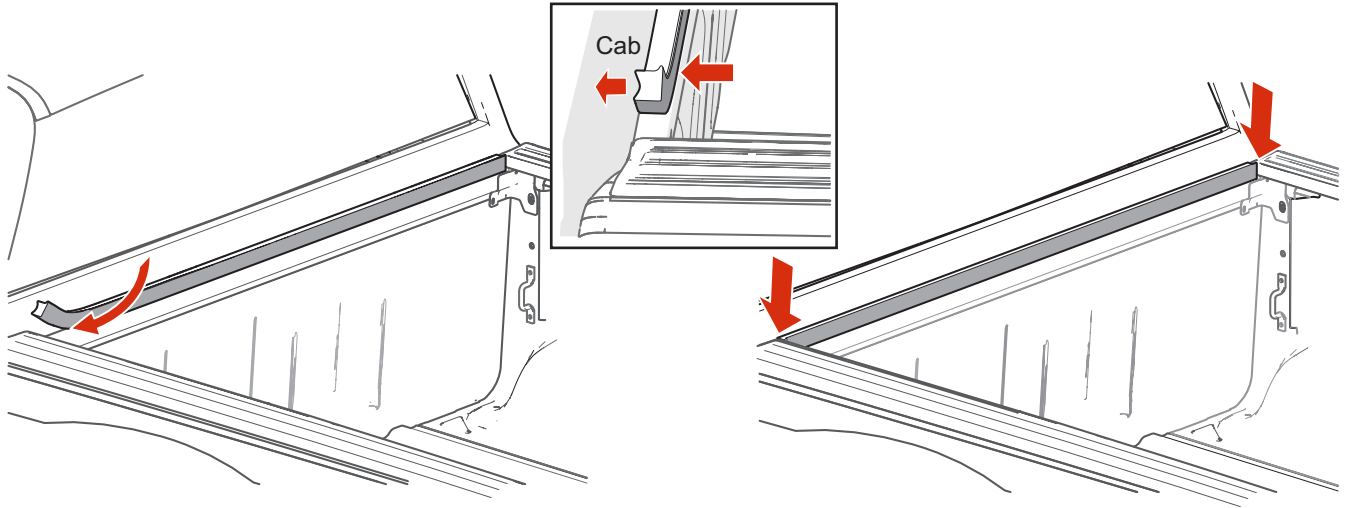
Ford Ranger 19+ Supplemental Install Sheet

Bulkhead Seal Kit

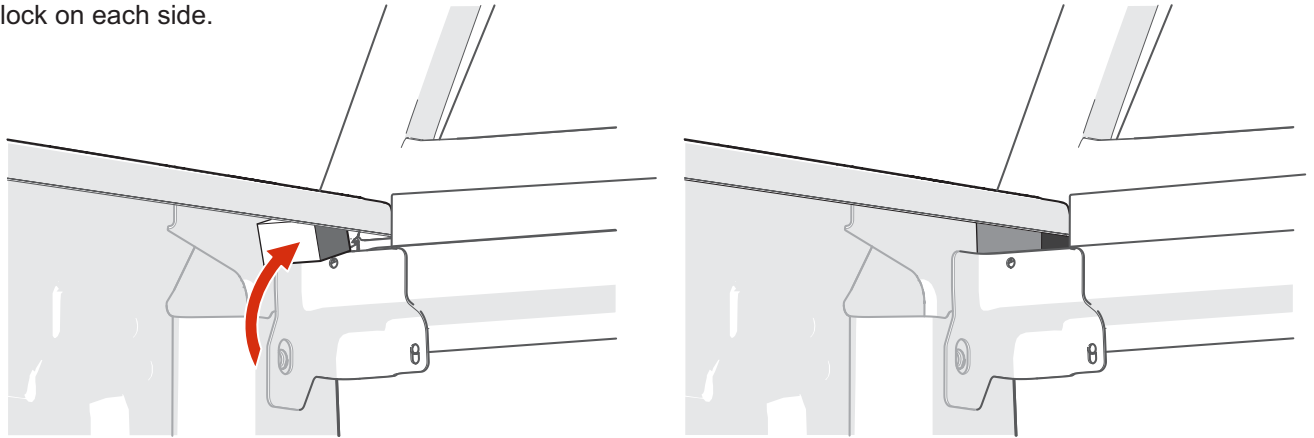
- ① Seal (cut to fit)
- ② Foam Block (2x)
- ③ Butyl Rubber (2x)



- 1** Install the bulkhead seal. Clean the top of the bulkhead. Peel the backing paper from the seal and apply to the top of the bulkhead. The seal should be oriented as shown, the seal should be flush with the inside face of the bulkhead, and the seal should be snug between the bed rail caps. Trim the seal for a tight fit.



- 2** Install foam block bulkhead seals. Clean the top of the bulkhead underneath the bed rail cap. Peel the paper backing from the block and apply to the top of the bulkhead underneath the bed rail cap. Install one block on each side.



- 3** Plug the small holes in the corner of the bulkhead face. Use a portion of the rubber sealant provided to plug the holes indicated. Plug the hole on both sides.

