



BX2719

2011-12 Kia Sorento LX 2011-12 Hyundai Sante Fe Installation Instructions

Serial Number

Please read BOTH these Installation Instructions and the General Towing Instructions before attempting to install or operate this equipment.

- Blue Ox® towing products and accessories are intended to be installed by Blue Ox® Dealers who are familiar with our products and have the equipment and knowledge to do “fit work.” When necessary, Blue Ox® Dealers can be found at www.blueox.com or by contacting our Customer Care Department at (402) 385-3051.
- Many Blue Ox® Baseplates are designed to use existing holes and hardware to mount the baseplate to the towed vehicle. Even though bolts are there, do not assume they are adequate for baseplate mounting. Always use hardware supplied in the hardware kit or existing hardware specified in the Baseplate Towing Installation Instructions.

Attachment Tab Height: 16 1/2”

Attachment Tab Width: 22 1/4”

Bolt Torque Specifications
Torque in Foot-Pounds for Metric Bolts

Bolt Size	Grade 8.8	Grade 10.9
6MM	6	8
8MM	16	22
10MM	31	40
12MM	54	70
14MM	89	117

Confirm the towability and pre-towing procedures for your vehicle with the owner’s manual or contact the vehicle’s manufacturer for specific towing procedures.

Bolt Torque Specifications
Torque in Foot-Pounds for Inch Bolts

Bolt Size	Grade 5	Grade 8
1/4”	10	14
5/16”	19	29
3/8”	33	47
7/16”	54	78
1/2”	78	119
5/8”	154	230



If the front of your vehicle looks different than this, call us at (402) 385-3051.

⚠ WARNING

Failure to read and follow these instructions could result in separation of the towed vehicle from the tow bar, causing property damage, loss of towed vehicle, personal injury or death.

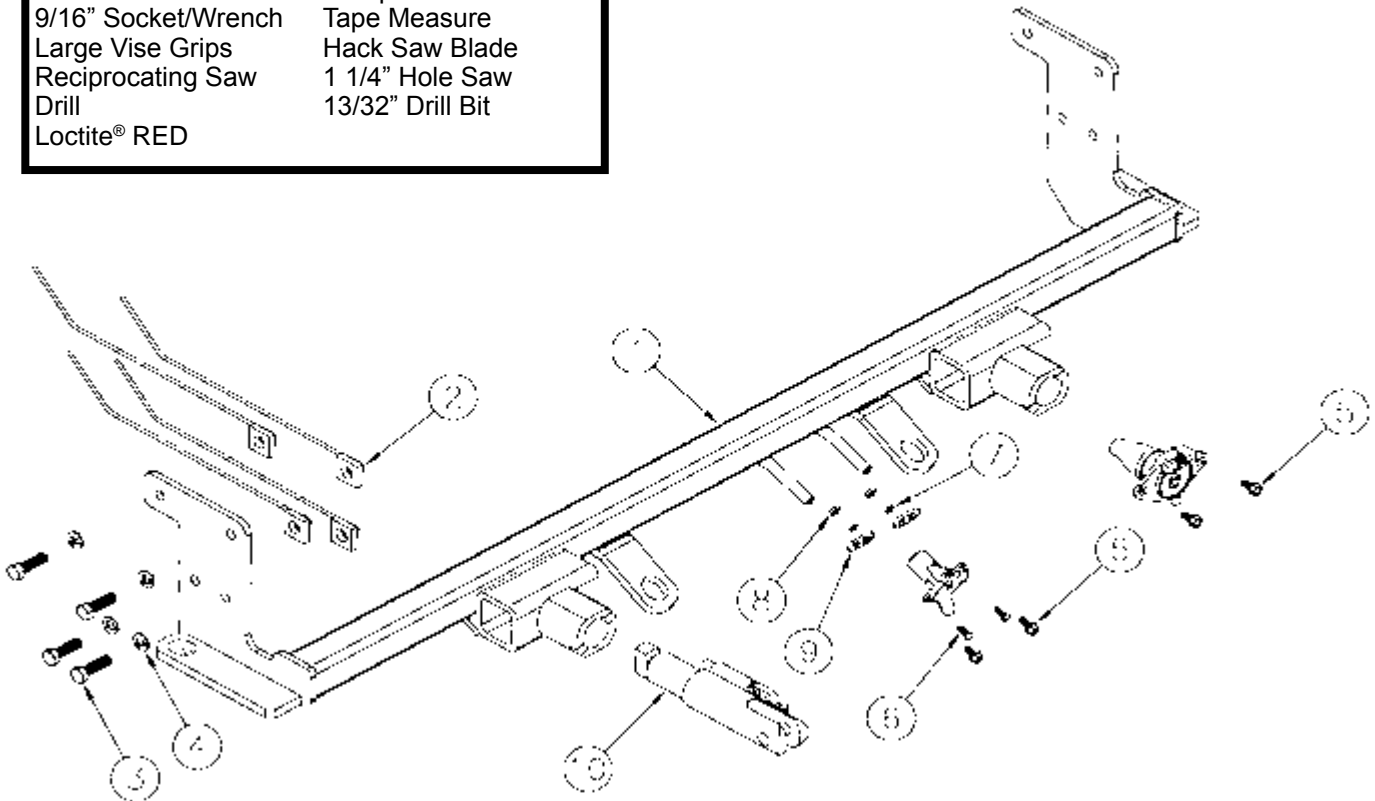
BX2719
2011-12 Kia Sorento LX
2011-12 Hyundai Sante Fe
Installation Instructions

Parts List

Ref. No.	Qty.	Part #	Description
1	1	61-6751	Weldment, Base Plate, BX2719
2	8	61-5208	Weldment, Nut Plate, 1/4x1x1, 3/8 Bolt w/10" Wire
3	8	201-0368	3/8-16x1 1/4 Hex Head Bolt, Grd. 5
4	8	203-0010	3/8 Lock Washer, ZP
5	2	201-0553	1/4-20x1/2" Hex Wshd, Type F Screw
6	2	201-0192	#10-32x1/2" Slot, Round Head Screw
7	2	203-0054	#10 Lock Washer
8	2	202-0047	#10-32 Hex Nut
9	2	101-5822	Adapter, 4 Way Connector
10	2	62-3468	Attachment Tab Assembly, Removable, SF/LB, 1 Hole
	2	226-0046	Baseplate Safety Cable, 36" Class III (Not Shown)
	4	229-0359	Quicklink, 3/8", ZP (Not Shown)
	2	290-0437	Cap Plug, Black (Not Shown)

Tools Required

8MM Socket	Flat Screwdriver
10MM Socket	Phillips Screwdriver
9/16" Socket/Wrench	Tape Measure
Large Vise Grips	Hack Saw Blade
Reciprocating Saw	1 1/4" Hole Saw
Drill	13/32" Drill Bit
Loctite® RED	



Important:

Use only genuine factory replacement parts on your baseplate. Do **NOT** substitute homemade or non-typical parts. If a bolt is lost or in need of replacement, for your safety and the preservation of your baseplate, be sure to use a replacement bolt of the same grade (In most cases it will be Grade 5, please reference the parts list above). Replacement parts may be ordered through your nearest Blue Ox® Dealer or Distributor. Failing to follow and/or altering these installation instructions in either installation or required equipment will void the manufacturer's warranty. Towing behind a non-motorized vehicle will void the warranty.

BX2719
2011-12 Kia Sorento LX
2011-12 Hyundai Sante Fe
Installation Instructions

Vehicle Weight: The weight of this vehicle is near the Class III, 5,000 lbs. rating limitations. Some models, depending on options, may well exceed this 5,000 lb rating. Be sure to confirm the weight of your individual vehicle before towing. As of 1999 the Aventa® II is now rated 10,000 lbs. and either the Aventa® II or the Alexus® LX tow bar must be used for these applications.

Tow Bar Adapters are NOT to be used with vehicle's weighing over 5,000 lbs.

Installation Notes: The fascia, belly pan, air baffle and washer reservoir are removed and reinstalled during installation of the baseplate. Drilling is required. Trimming of the bumper and fascia is required.

The dimensional variations between otherwise identical vehicles can be considerable. While the baseplate was designed for easy installation, it may be necessary to tailor the baseplate slightly to compensate for auto manufacturer's tolerances. These minor adjustments may include filing a hole slightly, bending electrical rods or bending end plates.

The BX8869 Bulb and Socket Wiring Kit is recommended for this vehicle.



Possible location for the Bulb and Socket Wiring Kit (BX8869)

Installation Instructions:

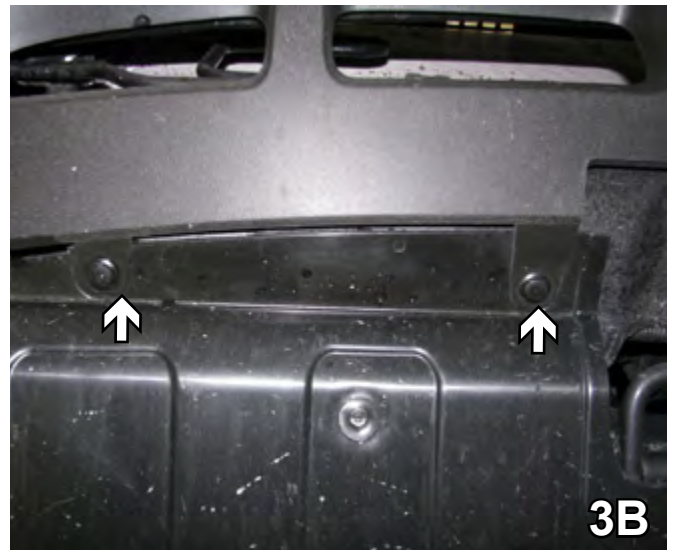


1. Using a 10MM socket, remove one metric bolt from the air intake housing (white arrow). Using a flat screwdriver, remove two plastic pushpins located near the air intake housing (gray arrows). Do this on both sides of the vehicle. Set bolts and pushpins aside to be reinstalled later.

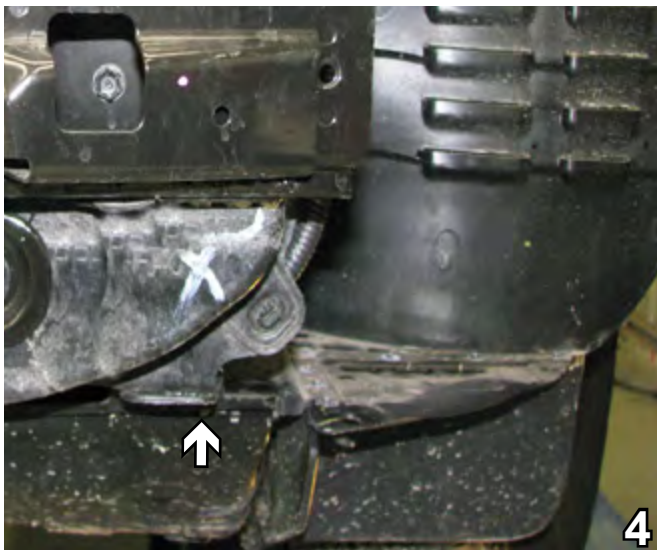


2. Using an 8MM socket, remove one plastic pushpin just forward of the front tire on the wheel well. Do this to both sides of the vehicle. Set pushpin aside to be reinstalled later.

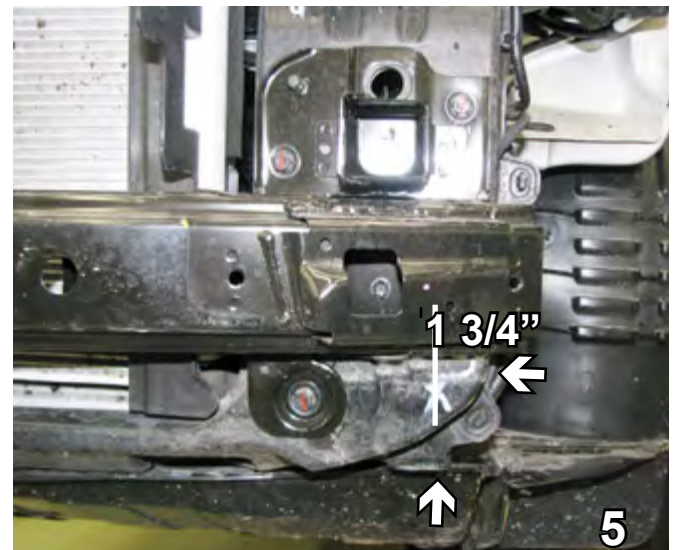
BX2719
2011-12 Kia Sorento LX
2011-12 Hyundai Sante Fe
Installation Instructions



3. Using a Phillips screwdriver, remove four plastic Phillips pushpins from just forward of the front tire along the bottom edge of fascia. Do this to both sides of the vehicle. The fascia is then ready to be removed from the vehicle by pulling fascia ends out to the side to release and then pulling it forward. Set fascia and pushpins aside carefully to be reinstalled later.



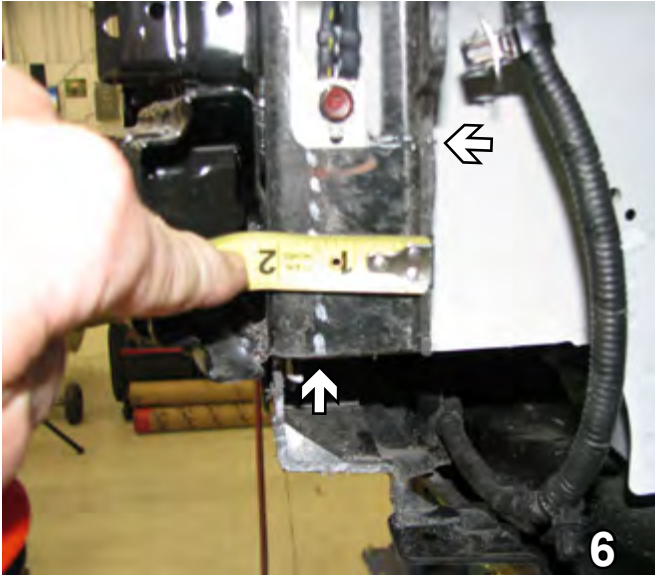
4. Remove the plastic pushpins located under the bumper attaching the plastic guard. Do this on both sides of the vehicle. Set pushpins aside to be reinstalled later.



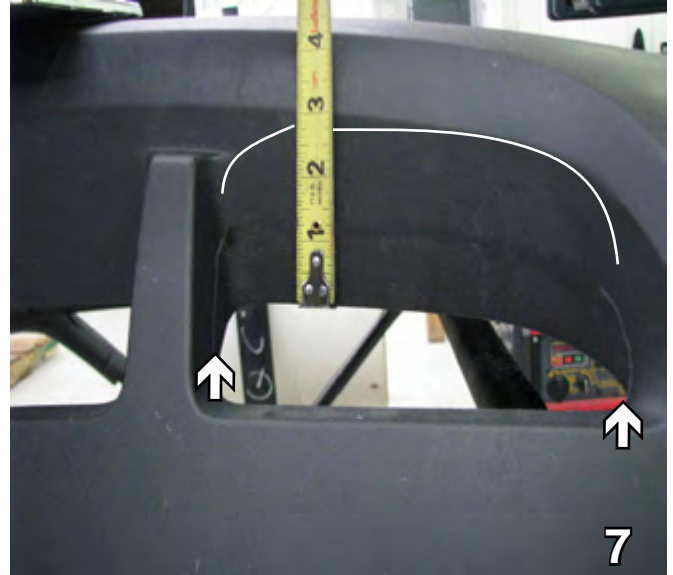
5. Measure 1 3/4" over from the outside edge of the bumper and straight down to the bottom edge of the bumper. Cut the corner out of the bottom of the bumper flush with the frame. Do this on both sides of the vehicle.

Handling of some cosmetic parts when installing this product may require the use of protective covers, rags, specialty tools, etc. to prevent damage.

BX2719
2011-12 Kia Sorento LX
2011-12 Hyundai Sante Fe
Installation Instructions



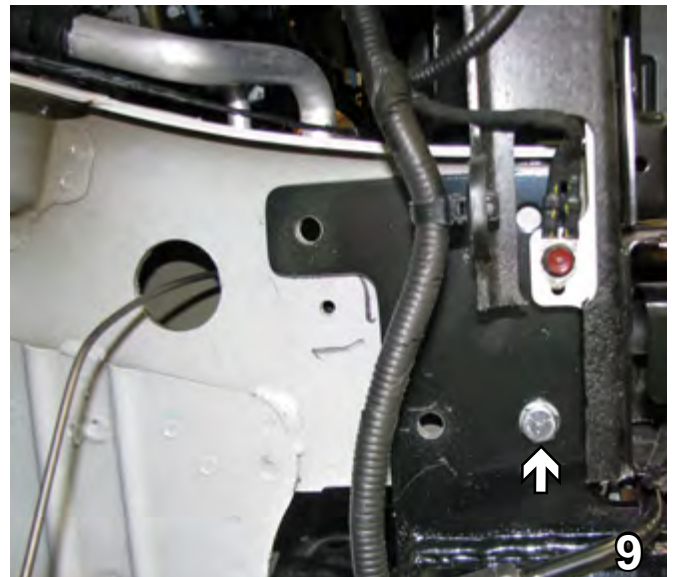
6. On the side of the bumper measure over 1 1/2" from the bend. Cut across directly under the hole and then straight down. Do this on both sides of the vehicle.



7. Enlarge the openings in the fascia by cutting 2" out across the top and rounding the corners on the sides. This will allow for the attachment tab receivers to come through. Do this on all four openings.



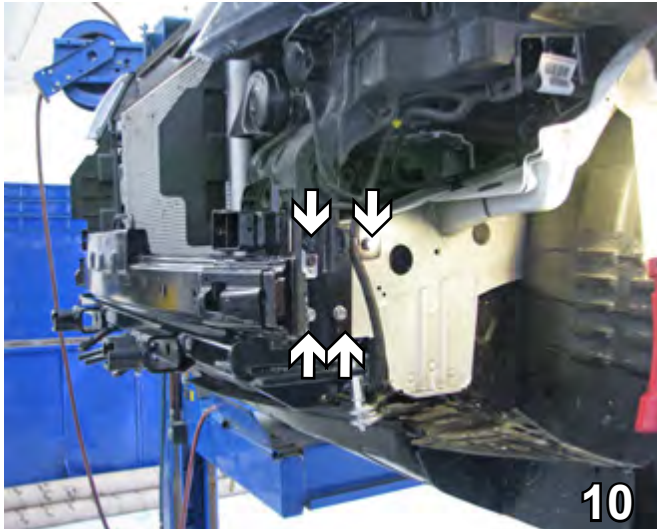
8. Using a 1 1/4" hole saw, drill a hole in the center of the frame for the nut plates. Slide the baseplate into place and clamp. Using the baseplate as a template with a 13/32" drill bit, drill the outside bottom hole. Do this to both sides of the vehicle.



9. Insert 3/8-16 x 1 1/4" bolt with 3/8" lock washer and fasten to 3/8-16 nut plate inserted into the 1 1/4" hole. Be sure the baseplate is level with respect to the vehicle frame. Drill the other three holes. Using a 10MM socket remove the bolt holding the ground wires. Move them and drill, reinsert the bolt and washer and reattach. Use loctite on all the bolts. Do this to both sides of the vehicle.

When using power drills be aware of the dangers of torque and drill bit length.

BX2719
2011-12 Kia Sorento LX
2011-12 Hyundai Sante Fe
Installation Instructions



10. Insert 3/8-16 x 1 1/4" bolts and 3/8" lock washers in all the holes and attach with 3/8-16 nut plates. Be sure to use loctite on all the bolts. Do this on both sides of the vehicle.



11. Attach the permanent baseplate safety cables to the provided convenience link on the baseplate (see grey arrow). The photo above shows the recommended installation of the cables to frame of vehicle (see white arrow). Additional options may interfere with suggested mounting; in this case secure the cables to a solid piece of the frame as described in the instructions included with the permanent baseplate safety cables. Be sure the safety cables do not rub against any hoses or moving parts. Do this to both sides of the vehicle.

12. Reinstall the fascia. Be sure to install all bolts and push pins.

Install the tow bar and safety cables according to the instructions provided in their packages. When demonstrating this to the customer, be sure to include all the contents and packages.

Do **NOT** substitute other devices if the tow bar pins and clips are misplaced.

Do not use the towed vehicle for storing luggage, equipment, etc. This may cause you to exceed the towing capacity of the tow bar, baseplate, and its accessories.

BE SURE TO USE LOCTITE® RED ON ALL BOLTS BEFORE TIGHTENING. TIGHTEN ALL BOLTS ACCORDING TO THE TORQUE CHART ON THE FRONT PAGE OF THESE INSTRUCTIONS OR ON PAGE 3 OF THE BASEPLATE TOWING GENERAL INSTRUCTIONS.

Be sure that **ALL** electrical connections are plugged in properly and functioning **BEFORE** installing the fascia.

DEALER or INSTALLER:
Be certain the user receives the instruction sheets for their products.

BX2719
2011-12 Kia Sorento LX
2011-12 Hyundai Sante Fe
Installation Instructions



Shown without removable tabs installed.



Shown with removable tabs installed.

CUSTOMER SERVICE COMMITMENT

Blue Ox is committed to providing you with exceptional customer care throughout your lifetime with our products. Our team is here to assist you with any questions you may have regarding the performance of your product. Simply call (402) 385-3051 and you can speak with our customer care team.

Additionally, please visit our website to see which rallies our Destination America team will be attending. For a nominal fee, our service technician will service your towing system to ensure it's in proper working condition. Also, as a commitment to our customers, should you visit our factory, you can stay at our full service Blue Ox campground at no charge along with enjoying a factory tour.

Again, thank you for being our customer and for the confidence you have shown in the performance of our products. It is because of customers like you we enjoy the success we have today.

If the baseplate is in an accident, it must be replaced. DO NOT use it again! An accident can cause unseen damage and using it again could result in more damage or serious injury. DO NOT use the baseplate if it is damaged or missing parts.



© 2011 Blue Ox
One Mill Road, Industrial Park
Pender, Nebraska 68047
Phone: (402) 385-3051 • Fax: (402) 385-3360
www.blueox.com