



Strong As An Ox™

## BX3749 Installation Instructions 2003 Toyota Corolla LE, VVTi/ 1.8 L.

Serial No.

The front fascia is removed for baseplate installation. Holes need to be drilled. The BX8869 is available for the vehicle. Attachment Tabs are 24 inches center to center and a height of 16 inches.



1. Remove two metric bolts from the bottom of front fascia with the 10MM socket, both sides.



2. Remove two push pins from lower opening in metal bumper.



3. Just forward of front tire, inside wheel well, remove metric bolt with the 10MM socket, both sides.



4. On the top side of fascia remove three screws with the phillips screw driver. Pull fascia forward and set aside.



5. Drill 1 1/4" hole on the outside of frame end, just back from seam (see photo for general location), using the 1 1/4" hole saw.



6. Drill out existing hole on inside of frame end with the 17/32" drill bit, both sides.

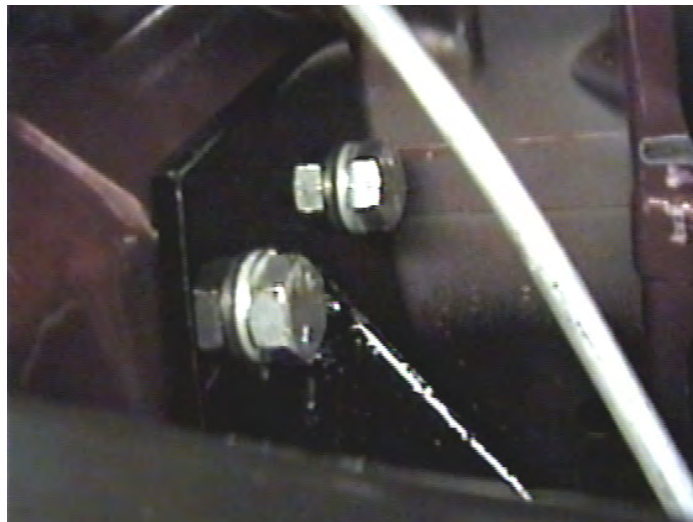


Strong As An Ox™

7. Align front hole of baseplate end with existing holes, insert item 2 into 1 1/4" hole, and fasten items 3 and 4, both sides. Be sure baseplate is level before tightening bolts. Using the baseplate as a template, drill remaining holes with 17/32" drill bit. Insert item 2 into 1 1/4" hole, fasten items 3 and 4, both side, and tighten all bolts. **Be sure and use loctite on all bolts before tightening.**

8. Reinstall fascia according to previous steps.

9. The dimensional variations between otherwise identical cars can be considerable. While the location and size of the holes in the baseplate were designed to allow for easy installation, it may be necessary to file a hole slightly to allow a bolt to clear.



10. Install the tow bar and safety cables according to the instructions included in their packages.

11. Do **not** substitute other devices if the tow bar pin and clip are lost.

12. **DEALER OR INSTALLER: BE CERTAIN THE USER RECEIVES THE INSTRUCTION SHEET.**





## Tools Required

10MM Socket  
3/4" Socket  
3/4" Wrench

Loctite Blue  
Vise Grips  
Phillips Screw Driver

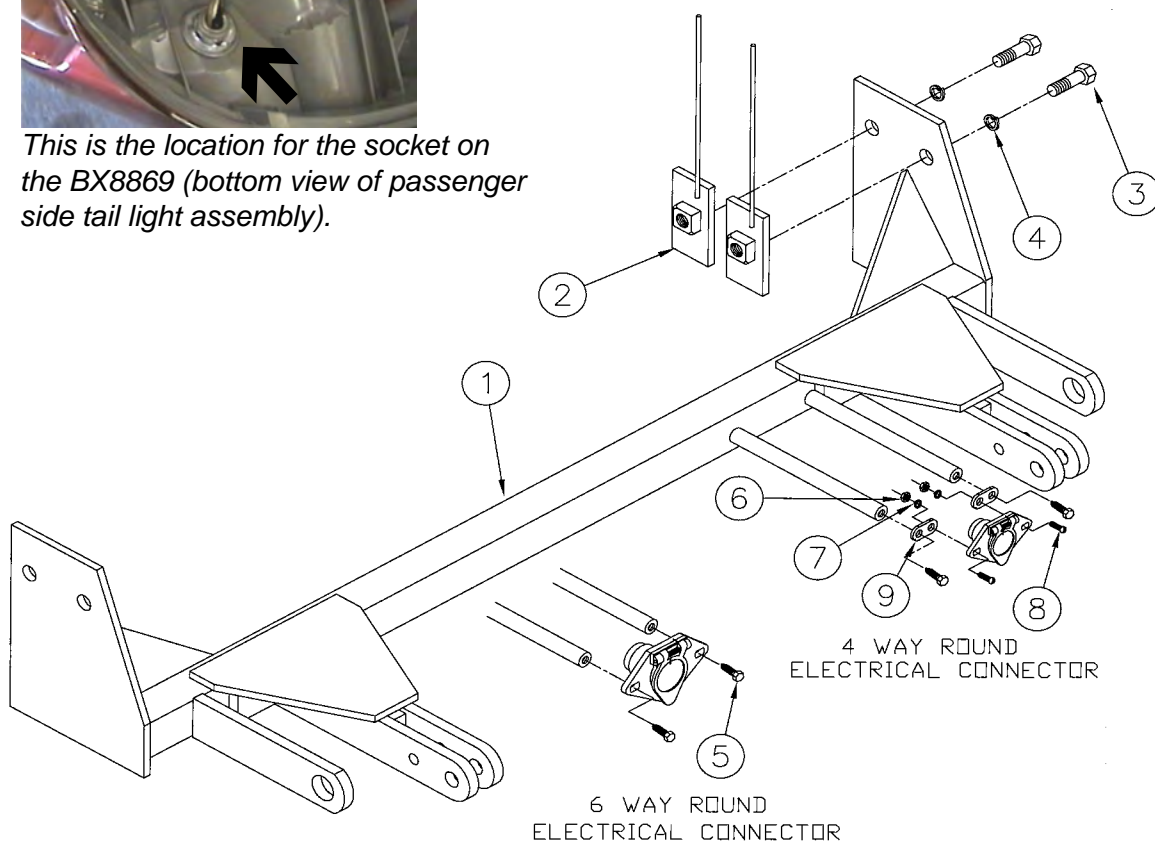
17/32" Drill Bit  
1 1/4" Hole Saw

## Parts List

Ref. No.	Qty.	Part No.	Description
1	1	61-5782.....	Weldment, Base Plate, BX3749
2	4	61-5338.....	1/2-13, Nut Plate, w/ 10" Wire
3	4	201-0051.....	1/2-13 x 1 1/2 Hex. Bolt Grd. 5, ZP
4	4	203-0012.....	1/2 Lock Washer, ZP
5	2	201-0553.....	1/4-20 x 1/2 Hx. Wshd, Type F Screw
6	2	201-0192.....	#10-32 x 1/2 Slot, Rd. Hd. Screw
7	2	203-0054.....	#10 Lock Washer
8	2	202-0047.....	#10-32 Hex Nut
9	2	101-5822.....	Adapter, 4 Way Connector
	2	226-0046.....	Baseplate Safety Cable 36" (Not Shown)
	4	229-0359.....	Quicklink, 3/8, ZP (Not Shown)



*This is the location for the socket on the BX8869 (bottom view of passenger side tail light assembly).*



**IMPORTANT:** Use only genuine factory replacement parts on your Base Plate. Do not substitute homemade or nontypical parts. If a bolt is lost or in need of replacement, for your safety and the preservation of your Base Plate, be sure to use a replacement bolt of the same grade (Usually Grade 5, refer to parts list). Repair parts may be ordered through your nearest **Blue Ox** dealer or distributor.